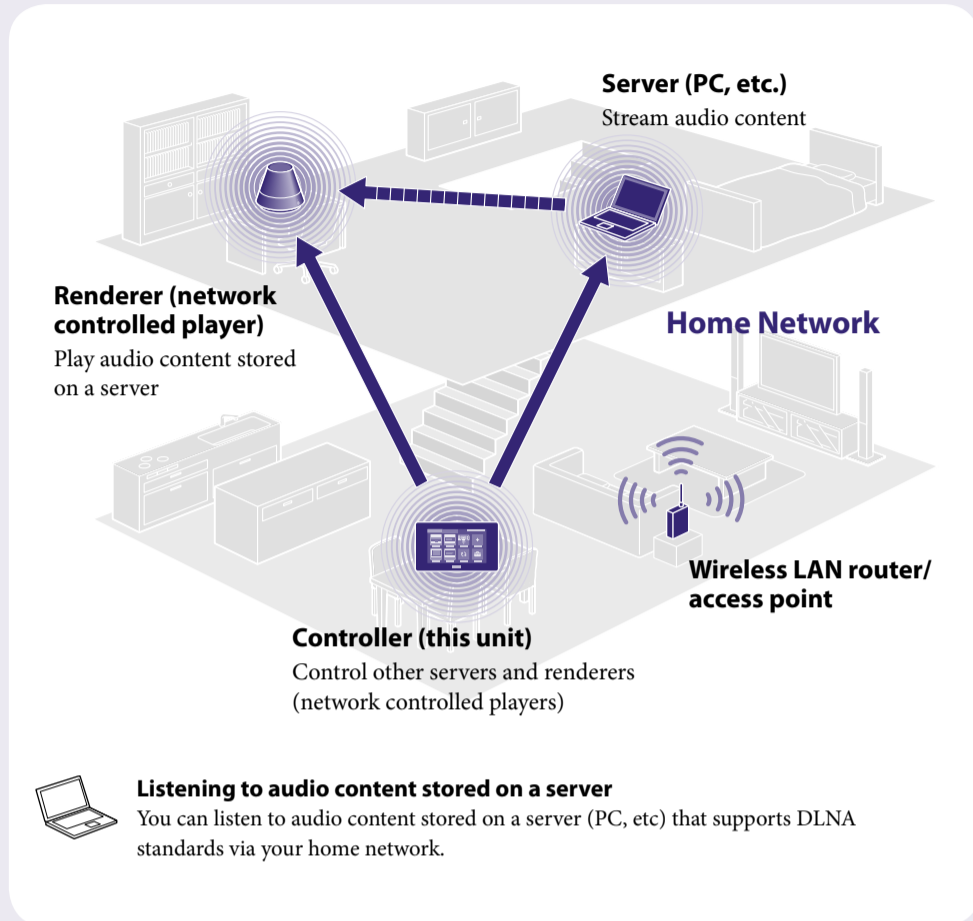


Network Remote Controller RMN-U1

Quick Setup Guide for wireless networks

This Quick Setup Guide explains how to connect this RMN-U1 Network Remote Controller to your wireless home network, and how to use the functions that can be used over the wireless network.

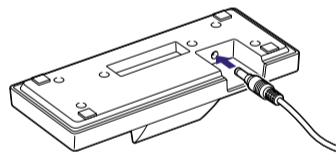


©2010 Sony Corporation Printed in China

1 Before you start using the unit

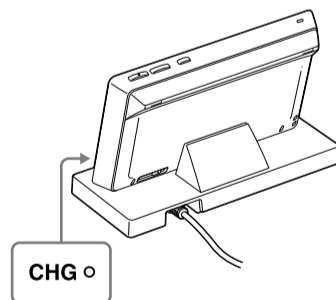
Connecting the AC power adaptor

Connect one end of the AC power adaptor to the DC IN jack of the remote control charger and the other end to a wall outlet.



Place the unit on the remote control charger

When you place the unit on the remote control charger, the CHG indicator lights up in red and charging starts. The CHG indicator turns off when the unit is fully charged.



- Tips**
- DLNA is an abbreviation for Digital Living Network Alliance. It is the name of an organization that establishes guidelines (DLNA guidelines), and it is also the name of the method that allows devices in a house to share digital content (such as music data, image data, etc.) over a home network. The unit complies with the DLNA standard. You can listen to music in various ways using the unit together with other DLNA-compliant devices.
 - The battery of this unit is not sufficiently charged when you purchased the unit. Perform the following operation by placing the unit on the remote control charger. Or perform it after charging the battery fully.

2 Performing initial setup operations

When the unit is turned on for the first time after you purchase it, some basic setup operations are required.

To make the network settings, the access point scan method is introduced in this guide.

- ◆ For details on network connection methods other than the access point scan method: → “Connecting the unit to your home network (network settings)” in the Operating Instructions



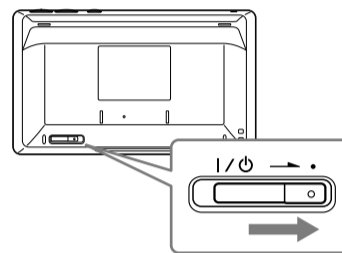
Check the following information in advance:

You will be required to select or enter the following information when you make the network settings. Check the following information in advance and record it in the spaces provided below.

Network name (SSID)*: _____
Security key (WEP key, WPA/WPA2 key)*: _____

* This information should be available from a label on your wireless LAN router/access point, from the operating manual, from the person who set up your wireless network, or from the information provided by your Internet service provider.

- 1 Turn all the DLNA-compliant devices in your home on.
- 2 Slide the I/O (power) switch in the direction of the arrow.

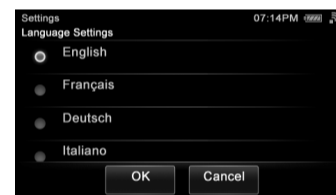


The language selection screen appears.

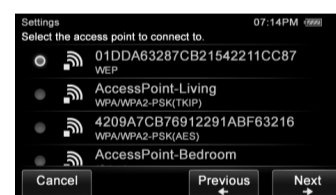
- 3 Tap the language you want to select, then tap “OK.”

You can select a language from the following languages.

Display	Language
English	English
Français	French
Deutsch	German
Italiano	Italian
Español	Spanish



- 4 Tap “Access Point Scan,” then tap “Next ▶.”
The unit automatically starts searching for access points and displays a list of all available access points. The unit can display a maximum of 20 access points in the list.
- 5 Tap the desired access point from the list referring to the memo that you wrote containing the network name (SSID).



- 6 Tap “Next ▶.”
The security key input screen appears. If the security key input screen does not appear, proceed to step 8.
- 7 Tap the text box and enter your security key (WEP Key, WPA/WPA2 Key) for your network, then tap “Next ▶.”
A confirmation screen appears.
For details on how to input characters, refer to “Entering text” in the operating instructions.
- 8 Tap “OK.”
“Connection is complete.” appears.
- 9 Tap “Close.”
A confirmation screen appears.
- 10 Tap “Close.”
The unit starts registering the DLNA-compliant devices that can be recognized over the network, automatically. This may take a while.

- Tips**
- You can register up to 20 servers and up to 30 renderers (network controlled players) on this unit.
 - Tap “Refresh” to refresh the HOME screen if the desired device is not registered automatically.

3 Listening to music stored on your server (PC)

You must set up the server and renderer (network controlled player) in advance.

- ◆ If you encounter any trouble while the unit is connected to a network, confirm the network status and settings.
→ "Confirming the network settings" in the Operating Instructions
- ◆ For details on the server settings for servers other than Windows 7, Windows Vista, or Windows XP:
→ Operating manuals or help of the respective servers, etc.



3-1 Setting up the server (PC)

When using a PC equipped with Windows 7

This section explains how to set up a manufacturer-installed version of Windows Media Player 12 for Windows 7.

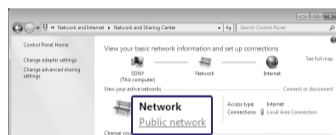
- ◆ For details on the use of Windows Media Player 12:
→ Windows Media Player 12 Help

- Go to [Start] - [Control Panel] and select [View network status and tasks] under [Network and Internet].
The [Network and Sharing Center] window appears.

Tip

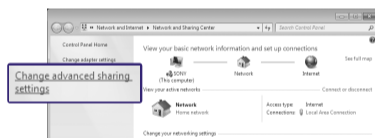
If the desired item does not appear on the display, try to change the display type used by the Control Panel.

- Select [Public network] under [View your active networks]. If the display shows other than [Public network], go to step ⑤.



The [Set Network Location] window appears.

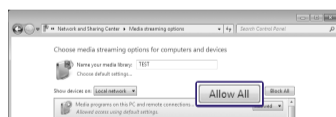
- Select [Home network] or [Work network] according to the environment in which the unit is being used.
- Follow the instructions that appear on the display according to the environment in which the unit is being used.
When the settings have been completed, confirm that the item under [View your active networks] has been changed to [Home network] or [Work network] in the [Network and Sharing Center] window.
- Select [Change advanced sharing settings].



- Select [Choose media streaming options...] from [Media streaming].



- If [Media streaming is not turned on] appears in the Media streaming options window, select [Turn on media streaming].
- Select [Allow All].



The [Allow All Media Devices] window opens. If all the devices in the local network are [Allowed] to access your network, select [OK] and close the window.

- Select [Allow all computers and media devices].
- Select [OK] to close the window.

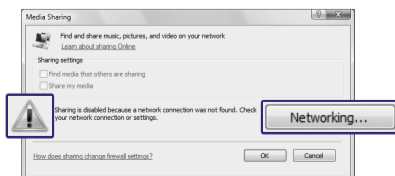
When using a PC equipped with Windows Vista/Windows XP

This section explains how to set up Windows Media Player 11 installed on Windows Vista/Windows XP*.

* Windows Media Player 11 is not manufacturer-installed on Windows XP. Access the Microsoft web site, download the installer, and then install Windows Media Player 11 on your PC.

- ◆ For details on the use of Windows Media Player 11:
→ Windows Media Player 11 Help

- Go to [Start] - [All Programs] and select [Windows Media Player].
Windows Media Player 11 starts up.
- Select [Media Sharing...] from the [Library] menu.
If you are using Windows XP, go to step ⑧.
- When is displayed, select [Networking...].



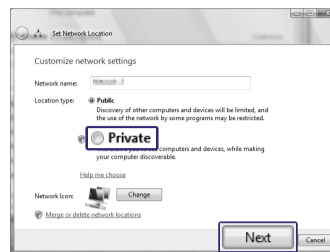
The [Network and Sharing Center] window appears.

- Select [Customize].

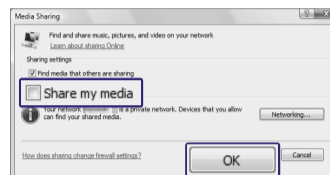


The [Set Network Location] window appears.

- Add a check mark next to [Private] and select [Next].



- Confirm that the [Location type] has been changed to [Private] and select [Close].
- Confirm that [(Private network)] is displayed in the [Network and Sharing Center] window and close the window.
- If a check mark has not been added next to [Share my media] in the [Media Sharing] window that is displayed in step ②, add a check mark to [Share my media], then select [OK].



A list of connectable devices is displayed.

- Select [Settings...] that appears beside [Share my media to:].
- Add a check mark to [Allow new devices and computers automatically] and select [OK].

Note

Uncheck this item after you confirm that the unit can connect to the PC and play audio data on the PC.

3-2 Setting up a renderer (network controlled player)

The set-up method is different depending on the device. Refer to the operating instructions of your device.

- Turn the renderer (network controlled player) on.
- Connect the renderer (network controlled player) to your home network.
- Permit access from this unit on the renderer (network controlled player) side.

3-3 Listening to audio content

How to select "PC/HDD Music" as an Activity is explained in this section.

- Press HOME on the unit.
The HOME screen appears.
- Tap the "Device" tab.
- Tap the desired renderer (network controlled player).
Activities that can be played back with the selected renderer (network controlled player) are displayed.
- Tap "PC/HDD Music."
The server selection screen appears.
Tip
The last audio content is played back automatically until you change the server.
- Tap the desired server.
The folder/album list of the server appears.
- Tap folders/albums until you find the desired content.
- Tap the desired content.
Playback starts and the playback screen corresponding to the selected Activity appears.

Playback screen



Troubleshooting

- ◆ For solutions to common problems and details of error messages:
→ "Troubleshooting" in the Operating Instructions

Customer support sites

For customers in the USA
<http://www.esupport.sony.com/>

For customers in Europe
<http://support.sony-europe.com/>

For customers in Canada
[English]
<http://www.sony.ca/ElectronicsSupport/>
[French]
<http://fr.sony.ca/ElectronicsSupport/>