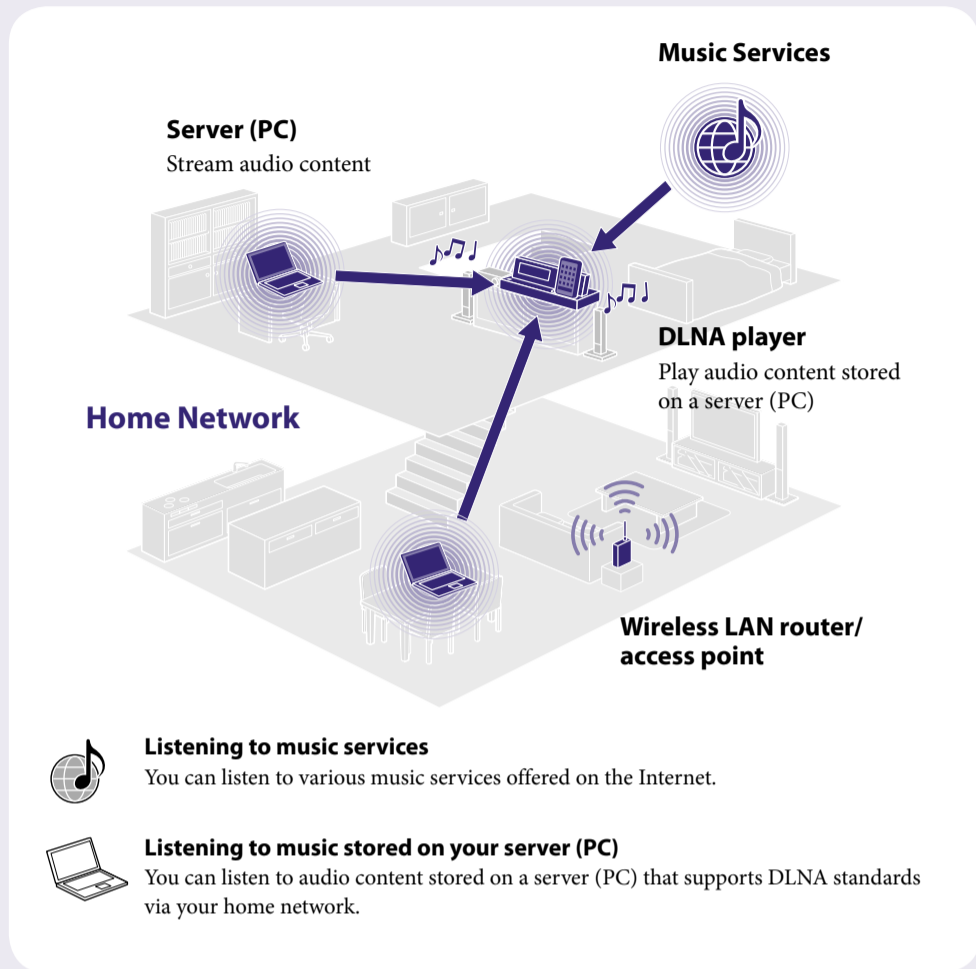


Network Audio Component/Server NAC-SV10i

Quick Setup Guide

for wireless networks and access to Internet services

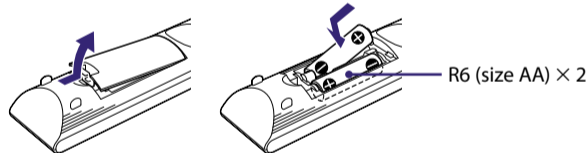
This Quick Setup Guide explains how to connect this NAC-SV10i Network Audio Component/Server to your wireless home network, and how to use the functions that can be used over a wireless network.



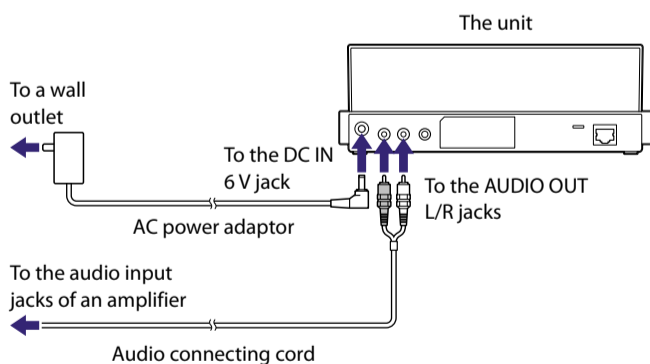
©2010 Sony Corporation Printed in China

1 Before you start using the unit

Insert batteries into the remote control.



Connect an amplifier and the AC power adaptor.



Tip DLNA is an abbreviation for Digital Living Network Alliance. It is the name of an organization that establishes guidelines (DLNA guidelines), and it is also the name of the method that allows devices in a house to share digital content (such as music data, image data, etc.) over a home network. The unit complies with the DLNA standard. You can listen to music in various ways using the unit together with other DLNA-compliant devices.

2 Performing initial setup operations

When the unit is turned on for the first time after you purchase it, some basic setup operations are required (making the network settings, the clock settings, obtaining a list of available music services, and other internal settings).

To make the network settings, the access point scan method is introduced in this guide.

◆ For details on network connection methods other than the access point scan method:
→ "Connecting the unit to your home network (network settings)" in the Operating Instructions



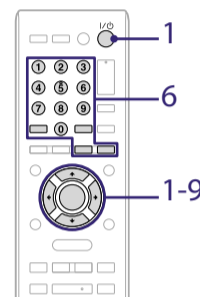
Check the following information in advance:

You will be required to select or enter the following information when you make the network settings. Check the following information in advance and record them in the space provided below.

Network name (SSID)*: _____

Security key (WEP key, WPA/WPA2 key)*: _____

* This information should be available from a label on your wireless LAN router/access point, from the operating manual, from the person who set up your wireless network, or from the information provided by your Internet service provider.



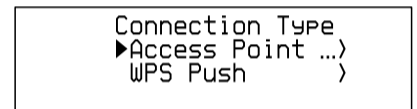
1 Press I/⏻ (power).

It may take a while (several tens of seconds) before the unit turns on.
• When "Set the items required to use this unit. Press ENTER to continue." appears, press ENTER. (When "▼" appears on the display, the text is continued to the next page. Press ↓ to see the entire text string.)
• When the "Start setup?" display appears, press ↑/↓ to select "OK," then press ENTER.

2 When "Network Settings" appears, press ENTER.

3 Select "Wireless LAN."

4 Select "Access Point Scan."



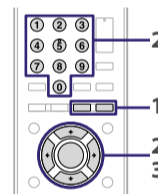
The unit displays a list of network names (SSIDs) of available access points.

5 Select the network name (SSID) from the list.

6 Enter the security key (WEP Key, WPA/WPA2 Key) of your network, and press ENTER.

Follow the steps below to enter characters and numbers.

1 Press CHARACTER (switch between letters and numbers) and a/A (switch between lowercase and uppercase letters) to select the desired type of characters and numbers.
Select "abc" for entering lowercase letters of the alphabet and numbers, "ABC" for uppercase letters of the alphabet and numbers, or "123" for numbers only.



2 Press the corresponding numeric/text button to enter the desired character or number, then press → to move the cursor to the next input position.
Repeat this operation to enter the text string.

3 Press ENTER to confirm and save the text string.

7 When "Save settings and check connection. Press ENTER to continue." appears, press ENTER.

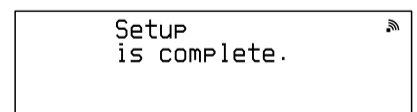
Press ↑/↓ to see the entire text string.
It may take a while for the unit to complete the network settings. When the network settings have been completed, "Complete." appears.

8 When the "Date&Time" display appears, select "Auto."

Select the city where the unit is being used from "Time Zone," press ENTER when the "NTP Server" display appears (you can use the factory set NTP server setting), then follow the instructions that appear on the display. For details on how to set the clock (including how to make manual settings), refer to the Operating Instructions.

9 When the "Get Service List" display appears, select "OK."

When the service list for the Music Services function is obtained, "Refreshed Service List." appears, then the unit starts making other internal settings automatically.
When the initial setup process has been completed, "Setup is complete." appears.



3 Listening to music services

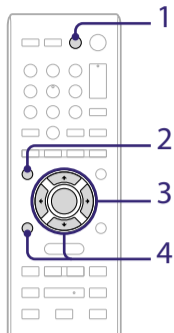
You can listen to various music services offered on the Internet.

- ◆ For details and further information on Music Services:
→ <http://www.sony.net/audio/musicservices>



The following steps introduce how to select "vTuner" as an example of music services offered on the Internet.

- 1 Press AMP I/⏻ to turn on the amplifier, and set the source selector on the amplifier to the setting for this unit.
- 2 Press FUNCTION repeatedly to select "MUSIC SERVICES." A list of service providers that the unit can connect to appears.
- 3 Select "vTuner."
- 4 Select the desired folder or station, then press ENTER.
 - Press ↑/↓ to select the item.
 - Press ENTER to go to the next directory or to listen to the station.
 - Press BACK to go back to the previous directory.



4 Listening to music stored on your server (PC)

You must set up the server (PC) in advance.

- ◆ If you encounter any trouble while the unit is connected to a network, confirm the network status and settings.
→ "Confirming the network settings" in the Operating Instructions
- ◆ For details on the server settings for servers other than Windows 7, Windows Vista, or Windows XP:
→ Operating manuals or help of the respective servers, etc.



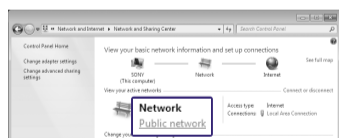
4-1 Setting up the server (PC)

When using a PC equipped with Windows 7

This section explains how to set up a manufacturer-installed version of Windows Media Player 12 for Windows 7.

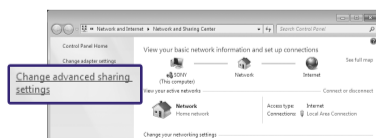
- ◆ For details on the use of Windows Media Player 12:
→ Windows Media Player 12 Help

- 1 Go to [Start] - [Control Panel] and select [View network status and tasks] under [Network and Internet].
The [Network and Sharing Center] window appears.
- 2 Select [Public network] under [View your active networks]. If the display shows other than [Public network], go to step ⑤.

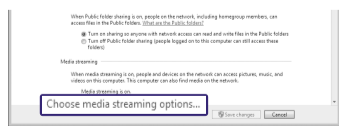


The [Set Network Location] window appears.

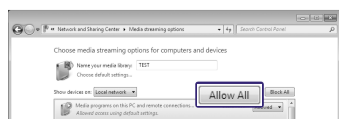
- 3 Select [Home network] or [Work network] according to the environment in which the unit is being used.
- 4 Follow the instructions that appear on the display according to the environment in which the unit is being used.
When the settings have been completed, confirm that the item under [View your active networks] has been changed to [Home network] or [Work network] in the [Network and Sharing Center] window.
- 5 Select [Change advanced sharing settings].



- 6 Select [Choose media streaming options...] from [Media streaming].



- 7 If [Media streaming is not turned on] appears in the Media streaming options window, select [Turn on media streaming].
- 8 Select [Allow All].



The [Allow All Media Devices] window opens. If all the devices in the local network are [Allowed] to access your network, select [OK] and close the window.

- 9 Select [Allow all computers and media devices].
- 10 Select [OK] to close the window.

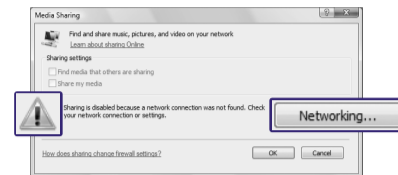
When using a PC equipped with Windows Vista/Windows XP

This section explains how to set up Windows Media Player 11 installed on Windows Vista/Windows XP*.

* Windows Media Player 11 is not manufacturer-installed on Windows XP. Access the Microsoft web site, download the installer, and then install Windows Media Player 11 on your PC.

- ◆ For details on the use of Windows Media Player 11:
→ Windows Media Player 11 Help

- 1 Go to [Start] - [All Programs] and select [Windows Media Player].
Windows Media Player 11 starts up.
- 2 Select [Media Sharing...] from the [Library] menu.
If you are using Windows XP, go to step ②.
- 3 When ⚠ is displayed, select [Networking...].



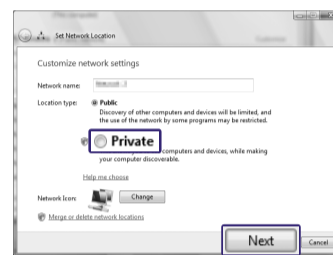
The [Network and Sharing Center] window appears.

- 4 Select [Customize].



The [Set Network Location] window appears.

- 5 Add a check mark to [Private] and select [Next].



- 6 Confirm that the [Location type] has been changed to [Private] and select [Close].
- 7 Confirm that [(Private network)] is displayed in the [Network and Sharing Center] window and close the window.
- 8 If a check is not added next to [Share my media] in the [Media Sharing] window that is displayed in step ②, add a check mark to [Share my media], then select [OK].



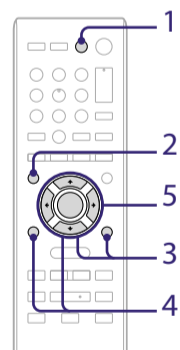
A list of connectable devices is displayed.

- 9 Select [Settings...] that appears beside [Share my media to:].
- 10 Add a check mark to [Allow new devices and computers automatically] and select [OK].

Note

Uncheck this item after you confirm that the unit can connect to the PC and play audio data on the PC.

4-2 Playing music stored on your server (PC)



- 1 Press AMP I/⏻ to turn on the amplifier, and set the source selector on the amplifier to the setting for this unit.
- 2 Press FUNCTION repeatedly to select "HOME NETWORK." A server list appears.
- 3 Press ↑/↓ to select the PC to be connected and press ENTER.
When the server list does not appear, press OPTIONS and select "Refresh." The server list is refreshed.
- 4 Select the item you want to play.
The items that are displayed (tracks, artists, albums, genres, folders, etc.) depend on the connected server (PC). To go back to the previous directory, press BACK.
- 5 Select the track you want to play and press ENTER.
Playback starts.

Troubleshooting

- ◆ For solutions to common problems and details of error messages:
→ "Troubleshooting" in the Operating Instructions

Customer support sites

For customers in the USA
<http://www.esupport.sony.com/>

For customers in Canada
[English]
<http://www.sony.ca/ElectronicsSupport/>
[French]
<http://fr.sony.ca/ElectronicsSupport/>