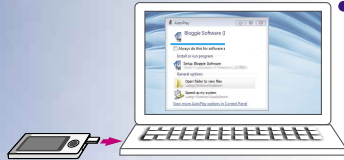


## How to Share

### Install first

1 Install built-in Bloggie Software



2 Shoot



3 Share

- Select images and media services to upload.
- Connect to the computer.

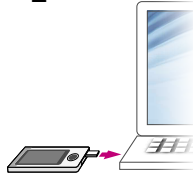


### How to install

1



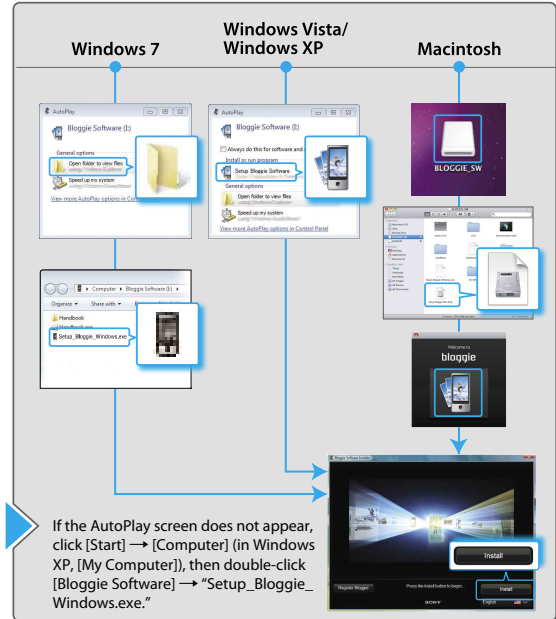
2



3



- Turn off the camera while charging.



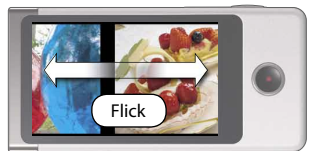
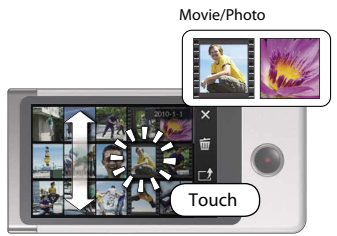
bloggie™  
Touch

Mobile HD Snap Camera  
MHS-TS10/TS20/TS20K

# Shoot

# Play

# Share (Bloggie Software)












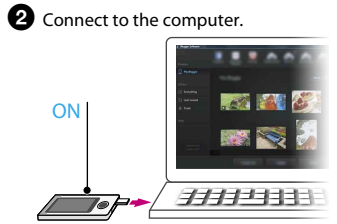
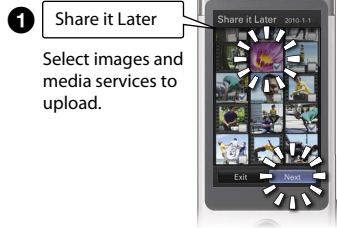
Recordable time of movies (approx.)\*

MHS-TS20 / TS20K: 4 hours  
MHS-TS10: 2 hours

\* When image size is set to [1280×720 30p]

## On-screen buttons

- |   |   |   |
|---|---|---|
|  Settings          |  Go to view mode     |  Share it Later        |
|  Self-Timer        |  Go to shooting mode |  Go to index view mode |
|  Change image size |  Delete              |  Volume                |



When it detects your camera, Bloggie Software will launch and help you import and share your photos and videos.

- You must install Bloggie Software first to use the camera's "Share it Later" function.

**Reading full manual**  
Install [Bloggie Handbook] (PDF) on your computer.  
Windows:  
Click [Start] → [Computer] (in Windows XP, click [My Computer]) → double-click [Bloggie Software] → [Handbook.exe] → click [Install].  
Macintosh:  
Select the [BLOGGIE\_SW] folder and copy "Handbook.pdf" stored in the [GB] folder to your computer.

- Supplied accessories**
- USB connection support cable (1) (Sony Corporation 1-836-378-)
  - Wrist Strap (1)
  - Instruction Manual (this manual)
  - Important Notice (1)
  - 360 Video Lens VCL-BPP2 (1)/360 Video Lens case (1) (MHS-TS20K only)  
Capture 360-degree images, playable on Bloggie Software.

**Built-in supplies**  
Battery/Bloggie Software/Bloggie Handbook

**If the camera becomes unresponsive:**  
Press and hold the ON/OFF (Power) button for at least 7 seconds, and reboot the camera.

Network services depend on location areas.