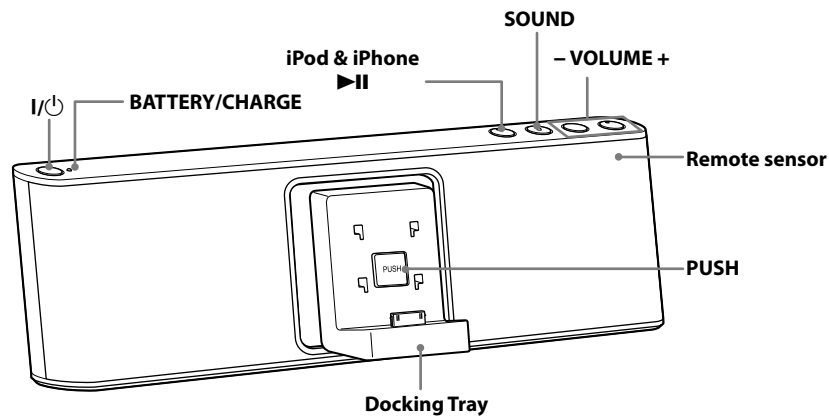


Personal Audio Docking System

Reference Guide **US**

Guide de référence (au dos) **FR**



VOLUME + and ►II buttons have a tactile dot.



©2011 Sony Corporation Printed in China

http://www.sony.net/

RDP-M15iP

English

WARNING

To reduce the risk of fire or electric shock, do not expose this apparatus to rain or moisture.

To reduce the risk of fire, do not cover the ventilation of the apparatus with newspapers, tablecloths, curtains, etc. And do not place lighted candles on the apparatus.

To reduce the risk of fire or electric shock, do not expose this apparatus to dripping or splashing, and do not place objects filled with liquids, such as vases, on the apparatus.

Do not install the appliance in a confined space, such as a bookcase or built-in cabinet.

Do not expose the batteries (battery pack or batteries installed) to excessive heat such as sunshine, fire or the like for a long time.

As the main plug of AC adaptor is used to disconnect the AC adaptor from the mains, connect it to an easily accessible AC outlet. Should you notice an abnormality in it, disconnect it from the AC outlet immediately.

The unit is not disconnected from the AC power source (mains) as long as it is connected to the wall outlet, even if the unit itself has been turned off.

The nameplate and important information concerning safety are located on the bottom exterior of the main unit and on the surface of the AC adaptor.

You are cautioned that any changes or modifications not expressly approved in this manual could void your authority to operate this equipment.

CAUTION

Danger of explosion if battery is incorrectly replaced. Replace only with the same type.

NOTE

This equipment has been tested and found to comply with the limits for a Class B digital device, pursuant to Part 15 of the FCC Rules. These limits are designed to provide reasonable protection against harmful interference in a residential installation. This equipment generates, uses and can radiate radio frequency energy and, if not installed and used in accordance with the instructions, may cause harmful interference to radio communications. However, there is no guarantee that interference will not occur in a particular installation. If this equipment does cause harmful interference to radio or television reception, which can be determined by turning the equipment off and on, the user is encouraged to try to correct the interference by one or more of the following measures:

- Reorient or relocate the receiving antenna.
- Increase the separation between the equipment and receiver.
- Connect the equipment into an outlet on a circuit different from that to which the receiver is connected.
- Consult the dealer or an experienced radio/TV technician for help.

WARNING

- Replace the battery for the remote commander with a Sony CR2025 lithium battery only. Use of another battery may present a risk of fire or explosion.
- Battery may explode if mistreated. Do not recharge, disassemble or dispose of in fire.
- Dispose of used battery promptly. Keep away from children.

Important Safety Instructions

- 1) Read these instructions.
- 2) Keep these instructions.
- 3) Heed all warnings.
- 4) Follow all instructions.
- 5) Do not use this apparatus near water.
- 6) Clean only with dry cloth.
- 7) Do not block any ventilation openings. Install in accordance with the manufacturer's instructions.
- 8) Do not install near any heat sources such as radiators, heat registers, stoves, or other apparatus (including amplifiers) that produce heat.
- 9) Do not defeat the safety purpose of the polarized or grounding-type plug. A polarized plug has two blades with one wider than the other. A grounding type plug has two blades and a third grounding prong. The wide blade or the third prong are provided for your safety. If the provided plug does not fit into your outlet, consult an electrician for replacement of the obsolete outlet.
- 10) Protect the power cord from being walked on or pinched particularly at plugs, convenience receptacles, and the point where they exit from the apparatus.
- 11) Only use attachments/accessories specified by the manufacturer.
- 12) Use only with the cart, stand, tripod, bracket, or table specified by the manufacturer, or sold with the apparatus. When a cart is used, use caution when moving the cart/apparatus combination to avoid injury from tip-over.



- 13) Unplug this apparatus during lightning storms or when unused for long periods of time.
- 14) Refer all servicing to qualified service personnel. Servicing is required when the apparatus has been damaged in any way, such as power-supply cord or plug is damaged, liquid has been spilled or objects have fallen into the apparatus, the apparatus has been exposed to rain or moisture, does not operate normally, or has been dropped.

RECYCLING NICKEL METAL HYDRIDE BATTERIES

Nickel Metal Hydride batteries are recyclable. You can help preserve our environment by returning your used rechargeable batteries to the collection and recycling location nearest you.



For more information regarding recycling of rechargeable batteries, call toll free 1-800-822-8837 or visit <http://www.rbrcc.org/>

Caution: Do not handle damaged or leaking Nickel Metal Hydride batteries.

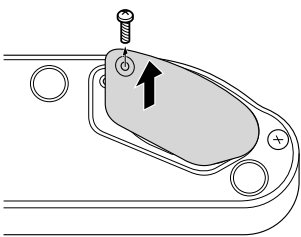
Precautions

- To disconnect the AC adaptor, pull it out by the plug, not the cord.
 - Since a strong magnet is used for the speaker, keep credit cards using magnetic coding or spring-wound watches, CRT-based TVs, or projectors, etc., away from the unit to prevent possible damage from the magnet.
 - Do not leave the unit in a location near a heat source such as a radiator or airtid, or in a place subject to direct sunlight, excessive dust, mechanical vibration, or shock.
 - Allow adequate air circulation to prevent internal heat build-up. Do not place the unit on a surface (a rug, a blanket, etc.) or near materials (a curtain) which might block the ventilation holes.
 - Should any solid object or liquid fall into the unit, unplug the unit and have it checked by qualified personnel before operating it any further.
 - Do not handle the unit with wet hands.
 - Do not place the unit anywhere near water.
- NOTES ON LITHIUM BATTERY**
- Wipe the battery with a dry cloth to assure a good contact.
 - Be sure to observe the correct polarity when installing the battery.
 - Do not hold the battery with metallic tweezers, otherwise a short-circuit may occur.
- Note**
- In this Reference Guide, "iPod" is used as a general reference to functions on an iPod or iPhone, unless otherwise specified by the text or illustrations.

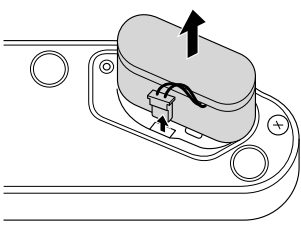
If you have any questions or problems concerning your unit, please consult your nearest Sony dealer.

To replace the rechargeable battery

- 1 Remove the screw of the battery compartment at the bottom of the unit, and open the lid.



- 2 Disconnect the connector of the battery pack and pull the old one out.



- 3 Insert a new battery pack and connect its connector to the jack.

- 4 Replace the battery compartment lid and tighten the screw.

Notes

- Charge a new battery pack before use. See "To prepare a power source" for details.
- Turn off the unit and disconnect the AC adaptor before replacing the battery pack.
- When replacing the battery pack, place a soft cloth etc., under the unit.

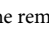
To charge your iPod (AC only)

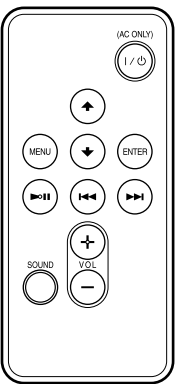
You can use the unit as a battery charger for your iPod when the power is supplied by the AC adaptor. Charging begins when the iPod is connected to the unit. The charging status appears in the display on iPod. For details, see the user's guide of your iPod.

To turn the unit on/off

Press I/⏻ (Power). The I/⏻ button indicator will light up when the unit is turned on.

Remote commander

Before using the supplied remote commander for the first time, remove the insulation film. Aim the remote commander at the  (Remote sensor) of the unit. The I/⏻ button indicator flashes when the remote commander's command is received.



VOL + and ►II buttons have a tactile dot.

I/⏻ (Power)*

- Turns the unit on/off. The I/⏻ button indicator lights up when the unit is turned on.

►II (Play/Pause)

- Start playing iPod. Press again to pause/resume playback.
- Press and hold to turn off the iPod.

►►I (Forward)

- Go to the next track.
- Press and hold while listening to the sound to locate a desired point.
- Press and hold in pause while observing the display on iPod to locate a desired point.

◀◀ (Backward)

- Go back to the previous track. During playback, this operation returns to the beginning of the current track. To go back to the previous track, press twice.
- Press and hold while listening to the sound to locate a desired point.
- Press and hold in pause while observing the display on iPod to locate a desired point.

★ (Up)/✦ (Down)

- Select a menu item or track for playback.

MENU

- Go back to the previous menu.
- Press and hold to go back to the main menu.

ENTER

- Execute the selected menu item or begin playback.

SOUND

- Press once or twice to obtain the desired sound effect. (For details, see "To obtain the bass or expansion sound effect.")

VOL +/- (Volume plus/minus)

- Adjust the volume.

* When using the rechargeable battery, press the I/⏻ button on the unit. The I/⏻ button of the remote commander works only when the AC adaptor is used.

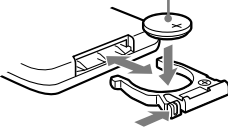
Notes

- Some operations may differ or may not be available between models of iPod.
- Some operations may differ or may not be available when using the iPod in a horizontal position.

When to replace the battery

With normal use, the battery (CR2025) should last for about 6 months. When the remote commander no longer operates the unit, replace the battery with a new one.

the ⊕ side facing up



Note

- If you are not going to use the remote commander for a long time, remove the battery to avoid any damage that may be caused by leakage and corrosion.

Playing an iPod

Compatible iPod/iPhone models

The compatible iPod/iPhone models are as follows.

Update software of your iPod/iPhone to the latest version before using it with this unit.

- iPod touch (4th generation)
- iPod touch (3rd generation)
- iPod touch (2nd generation)
- iPod touch (1st generation)
- iPod nano (6th generation)*
- iPod nano (5th generation)
- iPod nano (4th generation)
- iPod nano (3rd generation)
- iPod nano (2nd generation)
- iPod with video
- iPod classic
- iPhone 4S
- iPhone 4
- iPhone 3GS
- iPhone 3G
- iPhone

* The iPod nano (6th generation) cannot be controlled by the remote when the command of "MENU," "★," "✦," and "ENTER" is pressed.

On copyrights

iPhone, iPod, iPod classic, iPod nano, and iPod touch are trademarks of Apple Inc., registered in the U.S. and other countries. "Made for iPod," and "Made for iPhone" mean that an electronic accessory has been designed to connect specifically to iPod or iPhone, respectively, and has been certified by the developer to meet Apple performance standards. Apple is not responsible for the operation of this device or its compliance with safety and regulatory standards. Please note that the use of this accessory with iPod or iPhone may affect wireless performance.

Note

- This unit is not specified for use with an iPad, and malfunction may result if used as such.

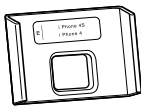
To set an iPod on the Docking Tray

- 1 Press **PUSH** on the front of the unit until the Docking Tray comes forward.
- 2 Set your iPod on the Dock connector.

To set an iPod in sideways

You can use the supplied Dock Holder to set your iPod. The Dock Holder code (A, B, etc.) and compatible iPod model(s) are indicated on the Dock Holder. Check for compatibility before use.

Example



Dock Holder code	Compatible iPod models
A	iPod touch (4th generation)
B	iPod touch (3rd generation)/ iPod touch (2nd generation)/ iPod touch (1st generation)
C	iPod nano (5th generation)
D	iPod nano (4th generation)
E	iPhone 4S/iPhone 4
F	iPhone 3GS/iPhone 3G/ iPhone

- 1 Press **PUSH** on the front of the unit until the Docking Tray comes forward.
 - 2 Attach and slide the appropriate Dock Holder down in the Docking Tray. Hold the Docking Tray when attaching the Dock Holder.
 - 3 Set your iPod on the Dock connector.
 - 4 Twist the Docking Tray anti-clockwise to the horizontal position.
- Conversely, the Docking Tray will not move when twisted clockwise.

Notes

- To change the Dock Holder, slide it up and pull out. Hold the Docking Tray when pulling the Dock Holder out.
- Attach the Dock Holder for using the iPod in the horizontal position. Otherwise, the iPod may fall when the Docking Tray is twisted.

To close the Docking Tray

- 1 Twist the Docking Tray clockwise until it is in vertical position.
- 2 Remove the iPod from the Dock connector.
- 3 Press **PUSH** on the front of the unit until the Docking Tray is locked.

To play back

Press **►II**.

When using the rechargeable battery with the remote commander, press I/⏻ on the unit, and then press **►II**. The iPod begins to play back. You can operate the connected iPod via this unit or the iPod itself.

Notes

- Remove the case or cover from your iPod before setting it in the Docking Tray to ensure a stable connection.
- When placing or removing the iPod, hold the iPod at the same angle as that of the connector on this unit, and do not twist or bend the iPod as it may result in connector damage.
- Remove the iPod and lock the Docking Tray of the unit when transporting it, otherwise a malfunction may result.
- When placing or removing the iPod, hold the Docking Tray securely.
- If the battery of your iPod is extremely low, charge it for a while before operation.
- An iPod touch/iPhone will not work unless it is turned on. Be sure to turn on the power of the iPod touch/iPhone before operation.
- Sony cannot accept responsibility in the event that data recorded to an iPod is lost or damaged when using an iPod connected to this unit.
- For details of environmental conditions for operating your iPod, check the website of Apple Inc.

Others

Troubleshooting

General

The power does not turn on when the AC adaptor is connected.

- Make sure the AC adaptor is connected to the wall outlet firmly.

The power does not turn on when the AC adaptor is disconnected, or the I/⏻ button indicator flashes several times and then the power of the unit turns off.

- The rechargeable battery may be depleted. In this case, connect to the AC adaptor to charge the battery. (See "To prepare a power source.")

The rechargeable battery is depleted.

- Connect to the AC adaptor to charge the battery.

There is no audio.

- Adjust **VOLUME +/-** (VOL +/-) on the remote commander).

Noise is heard.

- Ensure that the unit is not in the vicinity of in-use portable phones, etc.

The two different music sources are mixed together during playback.

- Stop playback of your iPod or external component.

The BATTERY/CHARGE indicator (red) flashes.

- The rechargeable battery is not connected properly, or cannot be charged for some reason. Check that the battery connector is connected firmly; otherwise, replace the battery.

iPod

There is no audio.

- Make sure the iPod is connected firmly.

Operation is not performed.

- Make sure the iPod is connected firmly.

The iPod does not charge.

- Make sure the iPod is connected firmly.
- Make sure the AC adaptor is connected firmly.

Audio-in

There is no audio.

- Make sure the audio connecting cable is connected firmly.

The sound is low.

- Confirm the volume of the connected external component.

Remote commander

The remote commander does not function.

- Replace the battery in the remote commander with a new one if it is weak.
- Make sure that you are pointing the remote commander at the remote sensor on the unit.
- Remove any obstacles in the path of the remote commander and the unit.
- Make sure the remote sensor is not exposed to strong light such as direct sunlight or fluorescent lamp light.
- Move closer to the unit when using the remote commander.

If the problem persists, consult your nearest Sony dealer.

Specifications

Section for iPod

DC out: 5 V

MAX: 1 A

General

Speaker

Approx. 5.0 cm (2 inches) dia. 8 Ω

Input

AUDIO IN jack (ø 3.5 mm stereo minijack)

Power output

10 W + 10 W (at 10% harmonic distortion) (with AC adaptor)

2 W + 2 W (at 10% harmonic distortion) (with rechargeable battery)

Power requirements

Rechargeable battery pack: NH - M15 RDP

Battery life

See "Battery Life" of "Power source" for details.

External power source

DC IN 14.5V

Dimensions

Approx. 337.0 mm × 108.2 mm × 77.0 mm (w/h/d)

(13 3/8 inches × 4 1/8 inches × 3 1/8 inches)

(not including projecting parts and controls)

Mass

Approx. 1.1 kg (2 lb 7 oz)

Supplied accessories

Remote commander (1)

AC adaptor (1)

Dock Holder A/B/C/D/E/F (6)

Design and specifications are subject to change without notice.

