

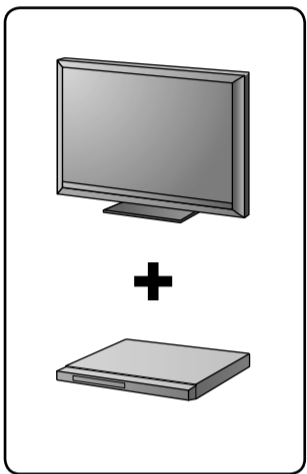


CD/DVD Player

Startup Guide / Guide de démarrage / คู่มือสำหรับเริ่มต้นใช้งาน / دليل بدء التشغيل / راهنمای شروع / 시작 안내서 / 入門指南 / 入门指南

1

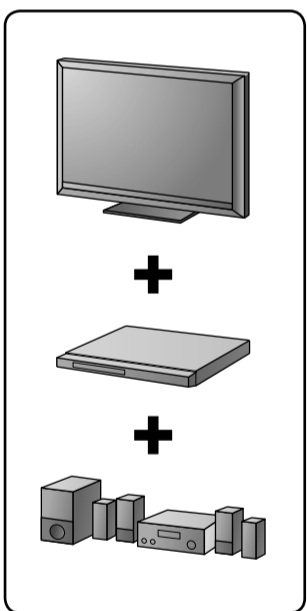
A



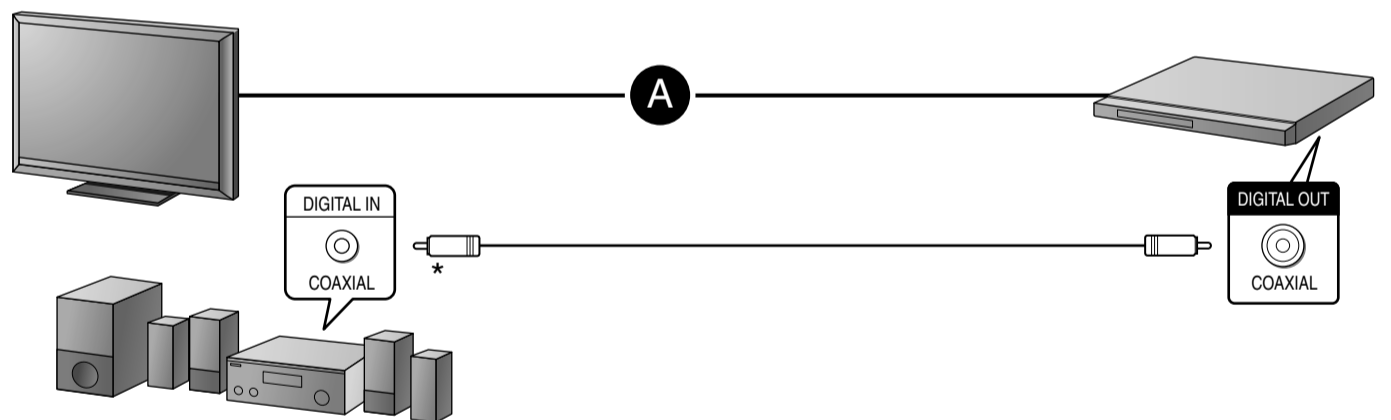
VIDEO & AUDIO



B



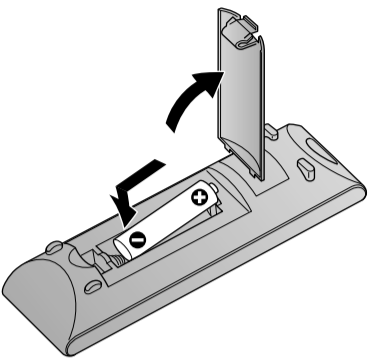
COAXIAL



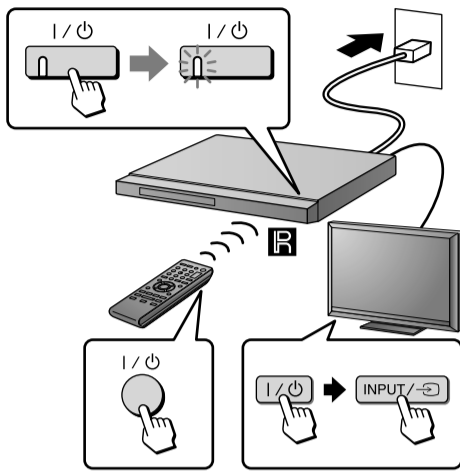
* Not supplied / Non fourni / ไม่มีส่วนให้ / غير مرفق / ضمیمه نیست / 별매 품 / 未提供 / 不提供

2

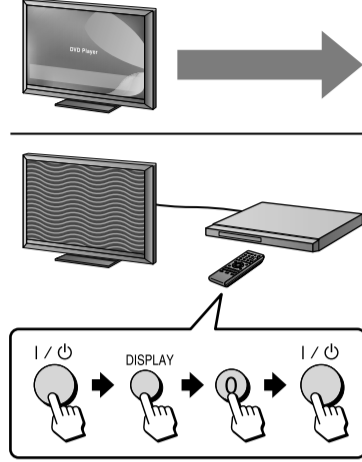
1



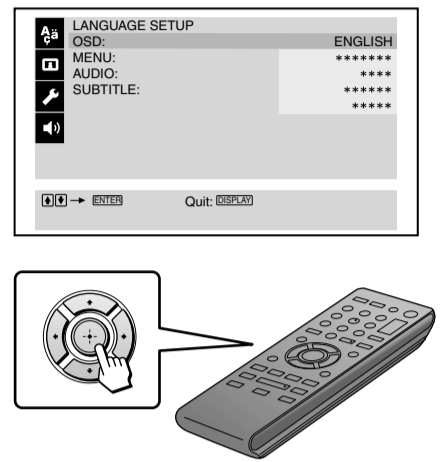
2



3 NTSC ↔ PAL

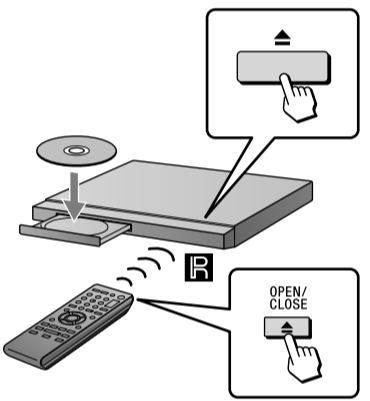


4

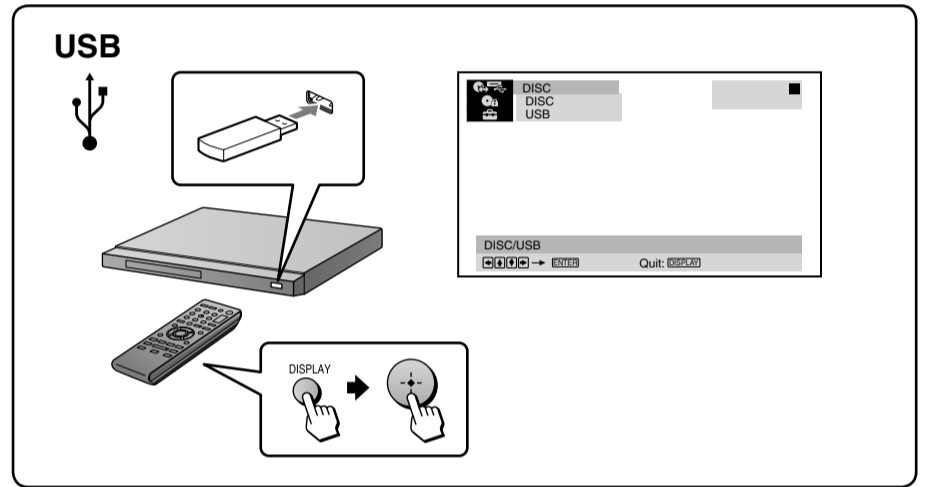
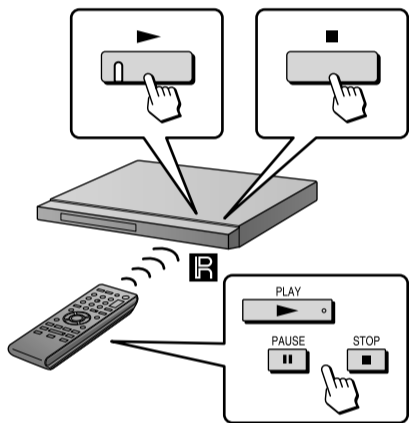


3

1



2



TIME/TEXT

PICTURE NAVI

AUDIO

SUBTITLE

MENU

CHAPTER

DISPLAY

FAST/SLOW PLAY

The diagram illustrates the remote control's navigation capabilities. It shows a central remote control with various buttons connected to different on-screen menus and playback functions. The 'PICTURE NAVI' menu displays a 3x3 grid of picture thumbnails. The 'AUDIO' menu shows '1: ENGLISH DOLBY DIGITAL 3/2.1'. The 'SUBTITLE' menu shows '1: ENGLISH' with the subtitle 'A mountain towers over a lake.' The 'MENU' section shows a 'CHAPTER' menu with six options (Chapter 1 to Chapter 6). The 'DISPLAY' menu shows '1 (1)', '1 (12)', 'T 0:00:00', and 'DVD VIDEO'. At the bottom, two playback progress bars are shown: one for fast/slow play and one for standard play with a pause button.