

Personal Audio System

Operating Instructions



XDR-DS21BT

English Personal Audio System

Before operating the system, please read this guide thoroughly and retain it for future reference.

WARNING

To reduce the risk of fire, do not cover the ventilation opening of the apparatus with newspapers, tablecloths, curtains, etc. Do not place the naked flame sources such as lighted candles on the apparatus.

To reduce the risk of fire or electric shock, do not expose this apparatus to dripping or splashing, and do not place objects filled with liquids, such as vases, on the apparatus.

Do not install the appliance in a confined space, such as a bookcase or built-in cabinet.

As the main plug is used to disconnect the unit from the mains, connect the system to an easily accessible AC outlet. Should you notice an abnormality in the system, disconnect the main plug from the AC outlet immediately.

Battery may explode if mistreated. Do not recharge, disassemble or dispose of in fire.

On Copyrights and Licenses

The BLUETOOTH® word mark and logos are owned by the Bluetooth SIG, Inc. and any use of such marks by Sony Corporation is under license. The N Mark is a trademark or registered trademark of NFC Forum, Inc. in the United States and in other countries. Android and Google Play are trademarks of Google Inc. iPad, iPhone, iPod, iPod classic, iPod nano, iPod touch and Mac are trademarks of Apple Inc. registered in the U.S. and other countries. Lightning is a trademark of Apple Inc. "Made for iPod," and "Made for iPhone" mean that an electronic accessory has been designed to connect specifically to iPod or iPhone, respectively, and has been certified by the developer to meet Apple performance standards. Apple is not responsible for the operation of this device or its compliance with safety and regulatory standards. Please note that the use of this accessory with iPod or iPhone may affect wireless performance.

No Power No Problem is a trademark of Sony Corporation. Other trademarks and trade names are those of their respective owners.

Notes

- This system is not specified for use with an iPad via USB connection, and malfunction may result if used with one.
- In the Operating Instructions, "iPod" is used as a general reference to functions on an iPhone, iPad or iPod, unless otherwise specified by the text or illustrations.

CAUTION
Danger of explosion if battery is incorrectly replaced. Replace only with the same or equivalent type.

To reduce the risk of fire or electric shock, do not expose this apparatus to rain or moisture.

Precautions

Note when using with a mobile phone

- For details on operation of your mobile phone when receiving a telephone call while transmitting the sound using the BLUETOOTH connection, refer to the operating instructions supplied with the mobile phone.

On safety

The nameplate indicating Sony trademark, model number and electrical rating is located on the bottom exterior of this system.

Notes on the AC plug

- Plug the AC plug into a nearby wall outlet. In the case of a problem, unplug it from the wall outlet immediately.
- Do not twist or place heavy objects on the AC plug cord.
- To disconnect AC power, grasp the plug itself, not the cord.

On placement

- Do not set the speaker in an inclined position.
- Do not leave the system in a location near heat sources, or in a place subject to direct sunlight, excessive dust, moisture, rain or mechanical shock.
- Do not expose the battery to excessive heat such as direct sunlight, fire or the like.

On operation

- Do not insert any small objects, etc., into the jacks. The system may short out or malfunction.

On cleaning

- Do not use alcohol, benzine, or thinner to clean the cabinet.

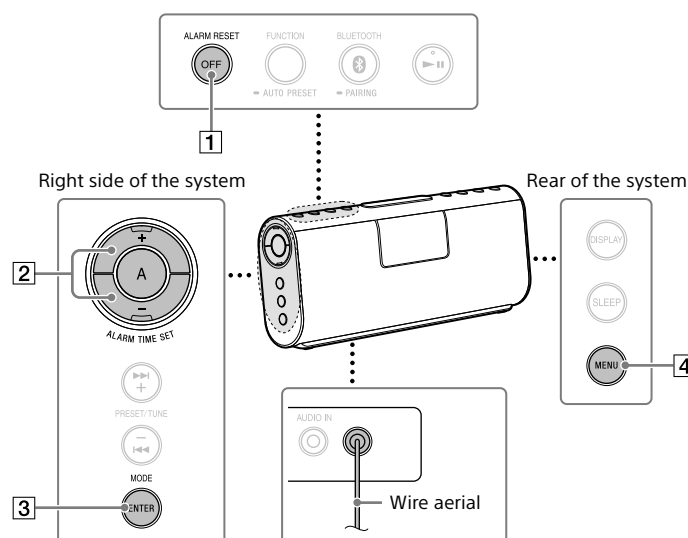
- Others**
- If you have any questions or problems concerning this system that are not covered in this manual, please consult your nearest Sony dealer.



The symbol on the package is applicable only in the European Union and other European countries with separate collection systems.

▶ Getting Started

Setting the Clock



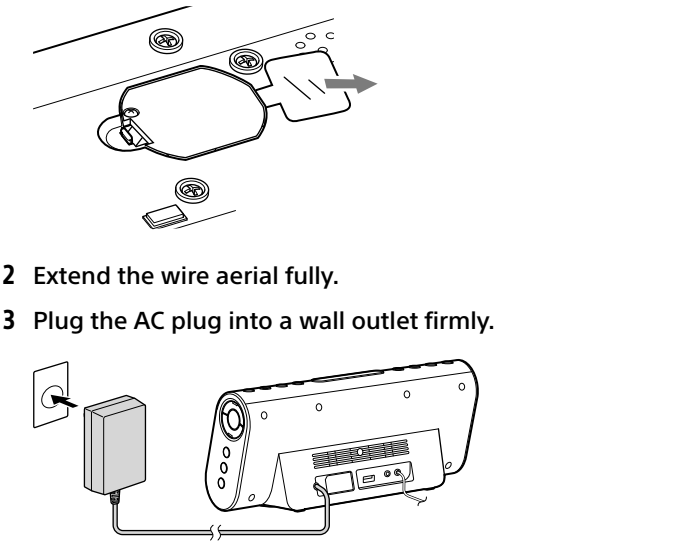
Setting the clock for the first time

When using the system for the first time, do the following.

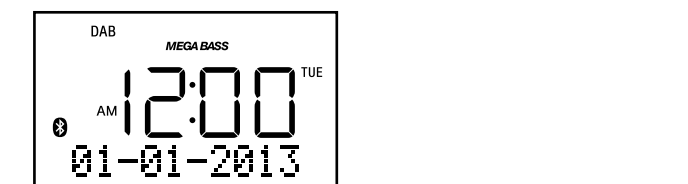
About the battery as a backup source

This system contains a CR2032 battery as a backup power source to keep the clock and the alarm operating during a power interruption. (No Power No Problem system.)

- Remove the insulation film from the backup battery on the bottom of the system.



*AM 12:00, and *01-01-2013* flash for about 2 seconds in the display, then the system automatically starts scanning, then creates a list of receivable DAB stations. The stations are stored in the list in alphabetical order.



When scanning is finished, the system obtains the current time from the DAB data of the first station received. The time and day appear in the display.

- Tip**
- After setting the clock, whenever the system receives a DAB station, the time will be synchronized with the DAB data.

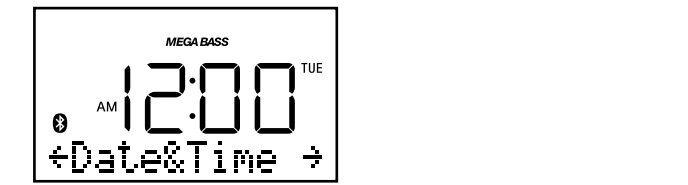
- Notes**
- If no stations are found by the DAB scan, "No Station" appears for about 2 seconds, then "AM 12:00" flashes in the display. In this case, the clock needs to be set manually. (See "Setting the clock manually.")
- If the clock is already running (The time was set manually, or obtained via DAB data before), the system will not scan for DAB stations automatically at power on.
- The clock cannot be set via DAB data if the current time is within an hour ahead or behind the start or end of daylight saving time (summer time). In this case, power on the system another time, or set the clock manually. (See "Setting the clock manually.")

Setting the clock manually

If DAB stations cannot be received (depending on reception conditions or broadcast activity), the clock cannot be set via DAB data.

- Note**
- The clock cannot be set when you are using the BLUETOOTH, USB, AUDIO IN, or radio function. Press OFF [1] to deactivate these functions.

- Plug the AC plug into a wall outlet.
- Press MENU [4].



- Press ALARM TIME SET +/- [2] to select "Sync Time By," then press ENTER [3] to confirm.

- Press ALARM TIME SET +/- [2] to select "None," then press ENTER [3] to confirm.

- Press MENU [4].

- Press ALARM TIME SET +/- [2] to select "Date & Time," then press ENTER [3] to confirm. The year digits begin to flash in the display.

- Press ALARM TIME SET +/- [2] to select the year, then press ENTER [3] to confirm. Press and hold ALARM TIME SET +/- [2] to change the year digits quickly. Once you confirm the setting by pressing ENTER [3], the month digits begin to flash.

- Repeat step 7 to set the month, day, hour and minute. The seconds start incrementing from zero.

- Notes**
- If you do not press any button for about 1 minute while setting the clock, the clock setting will be cancelled.
- A 100-year calendar (2013 - 2112) is installed in the system. When the date is set, the day of the week is automatically displayed.
- MO = Monday, TU = Tuesday, WE = Wednesday, THU = Thursday, FR = Friday, SAT = Saturday, SUN = Sunday
- When "Sync Time By" is set to "None," the clock cannot be set via DAB data.

To change the time format
You can choose the displayed time format between the 12-hour system (default) or the 24-hour system.

- Press MENU [4].
- Press ALARM TIME SET +/- [2] to select "Time Format," then press ENTER [3] to confirm.

- Press ALARM TIME SET +/- [2] to select "12 H" or "24 H," then press ENTER [3] to confirm. The time format toggles between the 12-hour system ("AM 12:00" = midnight) and the 24-hour system ("10:00" = midnight).

- Press MENU [4].
- Press ALARM TIME SET +/- [2] to select "Date Format," then press ENTER [3] to confirm.

- Press ALARM TIME SET +/- [2] to select the desired date format, then press ENTER [3] to confirm.

- Press MENU [4].
- Press ALARM TIME SET +/- [2] to select "Date Format," then press ENTER [3] to confirm.

- Press ALARM TIME SET +/- [2] to select the desired date format, then press ENTER [3] to confirm.

- Press MENU [4].
- Press ALARM TIME SET +/- [2] to select "Date Format," then press ENTER [3] to confirm.

- Press ALARM TIME SET +/- [2] to select the desired date format, then press ENTER [3] to confirm.

How to Make Wireless Connection with BLUETOOTH Devices

You can enjoy music and hands-free calling with the system wirelessly by using your device's BLUETOOTH function. Choose one of the following three connection methods, best suited for the BLUETOOTH device. For details on how to operate your device, refer to the operating instructions supplied with the device.

- Pairing with a BLUETOOTH device:** see **[Pattern A]** BLUETOOTH devices need to be "paired" with each other beforehand.

- Connecting with a BLUETOOTH device that has been paired, see this pattern.**

One-touch connection with a smartphone (NFC): see [Pattern C]

Using an NFC compatible smartphone, you can establish BLUETOOTH connection by just touching the system with it.

- For details about NFC, see "About NFC" in [Pattern C].**
- Check the following before operating the system.
 - Both the system and the device are placed within 1 m of each other.
 - The system is connected to a power source.
 - The operating instructions supplied with the device are kept at hand.

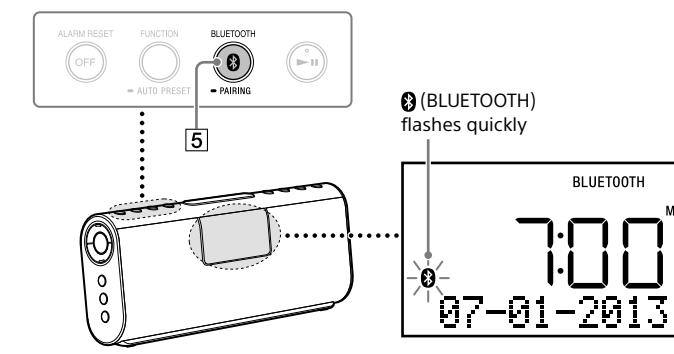
Pattern A

Pairing and connecting with a BLUETOOTH device

- Set the BLUETOOTH function of the BLUETOOTH device to ON. For details, refer to the operating instructions supplied with the device.

- Press and hold 0 BLUETOOTH = PAIRING [5] on the system until beeps are heard and 0 (BLUETOOTH) begins to flash quickly in the display.

- Tip**
- From the factory pairing information is not stored in the system. In this case, if you only press 0 BLUETOOTH = PAIRING [5], 0 (BLUETOOTH) starts flashing quickly in the display.



- Perform the pairing procedure on the BLUETOOTH device to detect the system.

If "SONY: XDR-DS21BT" does not appear on the device's display, repeat from step 1.

- Note**
- Some devices cannot display a list of detected devices.

- Select "SONY: XDR-DS21BT" shown in the display of the BLUETOOTH device.

- If Passcode* input is required on the display of the BLUETOOTH device, input "0000". The BLUETOOTH connection is established and 0 (BLUETOOTH) in the display stays on.

- * Passcode may be called "Passkey," "PIN code," "PIN number," or "Password."

- Tip**
- To pair with other BLUETOOTH devices, repeat steps 1 to 5 for each device.

- Notes**
- Pairing mode of the system is cancelled after about 5 minutes, and 0 (BLUETOOTH) flashes slowly in the display if the pairing mode is cancelled while performing this procedure, start over from step 2.
- Passcode of the system is fixed as "0000." The system cannot be paired with a BLUETOOTH device whose Passcode is not "0000."
- Once BLUETOOTH devices are paired, there is no need to pair those devices again. However, in the following cases, you will need to perform the pairing procedure again.
 - Pairing information is deleted after repair, etc.
 - The system is paired with 5 or more devices.

The system can be paired with up to 4 BLUETOOTH devices. If a new device is paired after 4 devices have been paired, the device whose latest connection time is the oldest among the 4 paired devices is replaced by the new one.

- * More than one device can be paired with the system, but sound will be heard from just one of those devices.

Pattern B

Connecting with a paired BLUETOOTH device

- Set the BLUETOOTH function of the BLUETOOTH device to ON.

- Tip**
- When 0 BLUETOOTH [5] is pressed, the system tries to establish BLUETOOTH connection with the BLUETOOTH device connected to the system last time. The BLUETOOTH connection is established and 0 (BLUETOOTH) in the display stays on.
- When 0 (BLUETOOTH) lights up in the display, the system is connected to a BLUETOOTH device. When you want to connect another BLUETOOTH device, terminate the current BLUETOOTH connection first by operating the connected BLUETOOTH device.

- Select "SONY: XDR-DS21BT" shown in the display of the BLUETOOTH device.

If necessary, select a BLUETOOTH profile that the system supports from the following: A2DP, HSP or HFP. For details on each profile, see "Listening to Music by BLUETOOTH Connection with a Smartphone, etc." or "Using Hands-free Calling While Listening to Music."

- Note**
- This step may not be necessary for some devices.

The BLUETOOTH connection is established and 0 (BLUETOOTH) in the display stays on.

- Pattern C**

Connecting with a smartphone by One touch (NFC)

By just touching the system with an NFC compatible smartphone, the system pairs and connects with the smartphone. (After making the BLUETOOTH connection, the system switches to the BLUETOOTH function automatically.)

Compatible smartphones

- Smartphones with the NFC function built-in (OS: Android 2.3.3 or later, excluding Android 3.x) Customers in Europe

Access the following Web site for details: <http://support.sony-europe.com>

About NFC

NFC (Near Field Communication) is a technology enabling short-range wireless communication between various devices, such as mobile phones and IC tags. Thanks to the NFC function, data communication can be achieved easily just by touching the relevant symbol or designated location on NFC compatible devices.

- Set the NFC function of the smartphone to ON.

- For details, refer to the operating instructions supplied with the smartphone.
- If your smartphone OS is Android 2.3.3 or later, and less than Android 4.1: proceed to step 2.
- If your smartphone OS is Android 4.1 or later, proceed to step 4.

- Download and install the app "NFC Easy Connect" on the smartphone. "NFC Easy Connect" is an original app by Sony for Android phones, and is available at Google Play Store.

Search for "NFC Easy Connect" or scan the following two-dimensional code to download and install the free app. Communication fees are required to download the app. The App may not be available in some countries and/or regions.

- Tip**
- For some smartphones, One-touch connection may be available without downloading the app "NFC Easy Connect." In that case, the operation and specifications may be different from the description here. For details, refer to the operating instructions supplied with the smartphone.

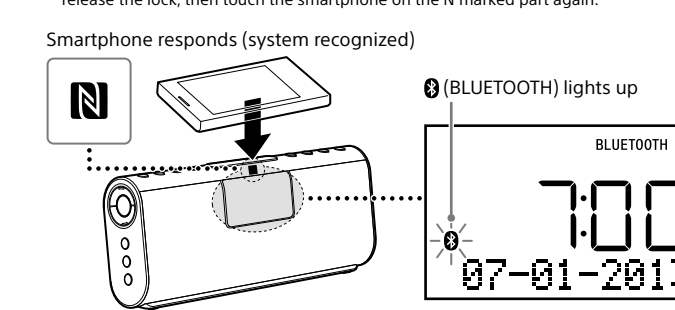
By the two-dimensional code: Use a two-dimensional code reader app.



- Start the app "NFC Easy Connect" on the smartphone. Make sure that the application screen is displayed.

- Keep touching the smartphone on the N marked part of the system until the smartphone responds.

- Note**
- If the screen of your smartphone is locked, the smartphone will not function. In this case, release the lock, then touch the smartphone on the N marked part of the system.



Follow the on-screen instructions to establish the connection. The BLUETOOTH connection is established and 0 (BLUETOOTH) in the display stays on.

- Tip**
- If it is difficult to establish the connection, try the following.
 - Activate the app "NFC Easy Connect" and move the smartphone slightly on the N marked part of the system.
 - If the smartphone is in a case, remove it.
 - Touch the system with the smartphone again to disconnect.
 - If you have multiple NFC compatible devices, just touch the smartphone to a different device to switch the connection to that device. For example, when your smartphone is connected with NFC compatible headphones, just touch the smartphone to the system to change the BLUETOOTH connection to the system.

Indications of the BLUETOOTH function



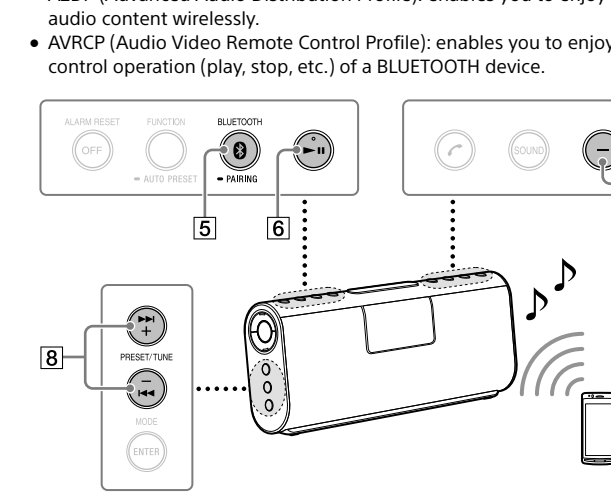
Status	Display
BLUETOOTH function	0 (BLUETOOTH) lights up
Pairing with a device	0 (BLUETOOTH) flashes quickly
Searching for a device	0 (BLUETOOTH) flashes
Connected to a device	0 (BLUETOOTH) lights up

▶ Listening to Music

Listening to Music by BLUETOOTH Connection with a Smartphone, etc.

You can enjoy listening to music and basic remote control operation of a BLUETOOTH device via BLUETOOTH connection. The BLUETOOTH device is required to support the following BLUETOOTH profiles.

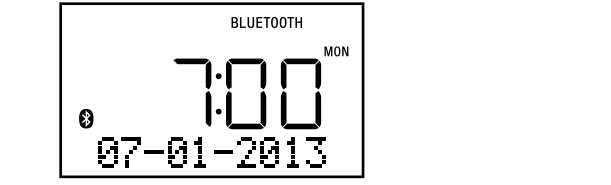
- A2DP (Advanced Audio Distribution Profile): enables you to enjoy high-quality audio content wirelessly.
- AVRCP (Audio Video Remote Control Profile): enables you to enjoy basic remote control operation (play, stop, etc.) of a BLUETOOTH device.



Operations may vary depending on the BLUETOOTH device. Refer also to the operating instructions supplied with your BLUETOOTH device.

- Make the BLUETOOTH connection between the system and the device.

For details on the BLUETOOTH connection procedure, see "How to Make Wireless Connection with BLUETOOTH Devices." The BLUETOOTH connection is established and 0 (BLUETOOTH) in the display stays on.



- Start playback on the BLUETOOTH device, then adjust the volume. Set the volume of the BLUETOOTH device to a moderate level, and press VOLUME +/- [7] on the system.

After use

- Do any of the following to terminate the BLUETOOTH connection.
 - Set the BLUETOOTH function of the BLUETOOTH device to off. For details, refer to the operating instructions supplied with the device.
 - Turn off the BLUETOOTH device.
 - Touch the system with the smartphone again to disconnect (NFC compatible smartphones only).

System button functions during music playback

You can operate a BLUETOOTH device that supports AVRCP. Available functions may vary depending on the BLUETOOTH device. Refer to the operating instructions supplied with the BLUETOOTH device.

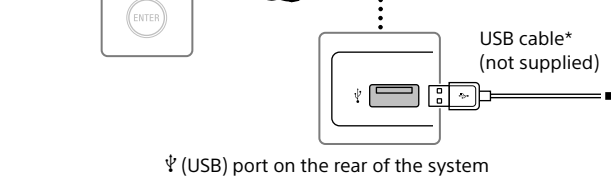
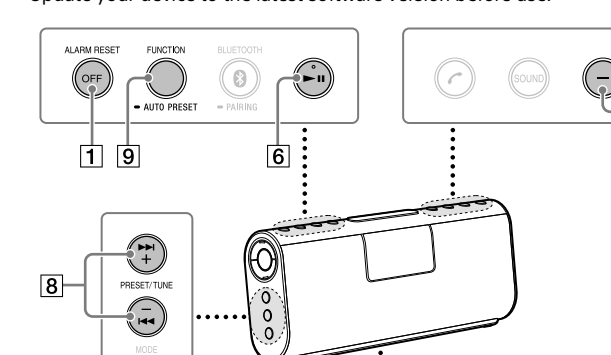
Buttons	Functions
▶ ⏮ ▶ (play/pause) [6]	Press once to pause/resume playback.
▶ ⏮ ▶ (forward/rewind) [8]	Press once to skip to the next/previous track.
VOLUME +/- [7]	Press to adjust the volume.

Listening to Music by Wired Connection

Listening to Music via USB Connection with an iPhone/iPod

You can enjoy listening to music and play back an iPhone/iPod connected to the system via USB.

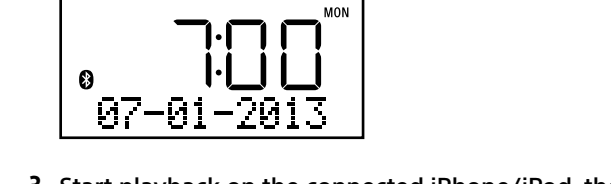
Update your software to the latest software version before use.



- USB cable: Use the Lightning to USB Cable or Dock Connector to USB Cable supplied with your iPhone/iPod.
- Do not connect the multiple devices to the Ψ (USB) port of the system.

- Connect the iPhone/iPod to the Ψ (USB) port on the rear of the system.

- Press FUNCTION [9] to select "USB." Press FUNCTION [9] repeatedly until "USB" lights up in the display.



- Start playback on the connected iPhone/iPod, then adjust the volume. Set the volume of the connected iPhone/iPod to a moderate level, and press the VOLUME +/- [7] on the system.

- Notes**
- When a USB device other than an iPhone/iPod is connected to the system, only charging begins automatically.
- Do not connect the multiple devices to the Ψ (USB) port of the system.

After use

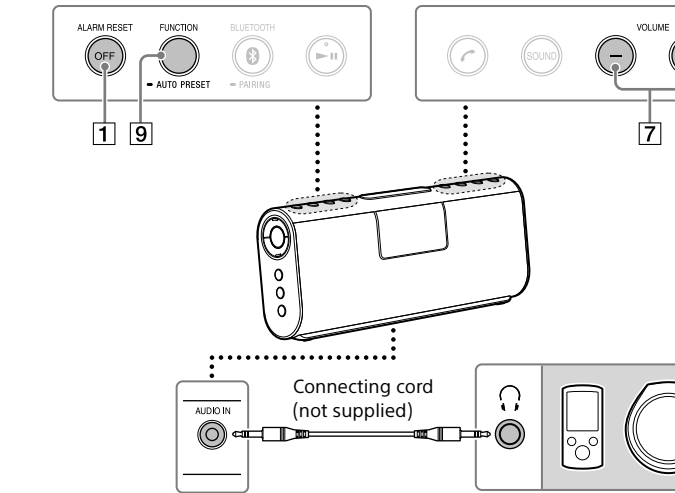
Press FUNCTION [9] or OFF [1] to deactivate the USB function.

System button functions during music playback

Buttons	Functions
▶ ⏮ ▶ (play/pause) [6]	Press once to pause/resume playback.
▶ ⏮ ▶ (forward/rewind) [8]	Press once to skip to the next/previous track.
VOLUME +/- [7]	Press to adjust the volume.

▶ Listening to Music by Wired Connection with a Portable Audio Device, etc.

You can enjoy sound from the external device, such as a portable digital music player, through the speaker of this system. Be sure to turn off the power of the device before making any connections.



AUDIO IN jack (stereo mini jack) on the rear of the system

- Connect the device to the AUDIO IN jack on the rear of the system.

- Press FUNCTION [9] to select "AUDIO IN." Press FUNCTION [9] repeatedly until "AUDIO IN." lights up in the display.

- Start playback on the connected device, then adjust the volume. Set the volume of the connected device to a moderate level, and press the VOLUME +/- [7] on the system.

After use Press FUNCTION [9] or OFF [1] to deactivate the AUDIO IN function. To stop playback on the connected device, operate the connected device.

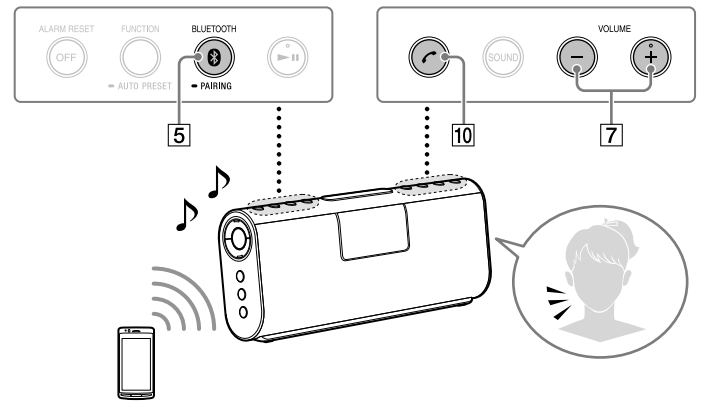
Notes when connecting the device by wired connection

- The necessary type of cable or connecting cord depends on the device. Be sure to use the correct type of cable or cord.
- When you watching TV or listening to the radio with a device connected to the system, the reception may be poor.
- When you listen to the radio with a device connected, turn off the connected device to prevent noise. If noise occurs, even when the device is turned off, disconnect and place the device away from the system.

► Useful Functions

Using Hands-free Calling While Listening to Music

You can enjoy hands-free calling via BLUETOOTH connection with a BLUETOOTH mobile phone that has a music function and supports the BLUETOOTH profile A2DP (Advanced Audio Distribution Profile), and HFP (Hands-free Profile) or HSP (Headset Profile).
If your BLUETOOTH mobile phone supports both HFP and HSP, set up this HFP.



Operations may vary depending on the BLUETOOTH mobile phone. Refer also to the operating instructions supplied with your mobile phone.

1 Make the BLUETOOTH connection between the system and the mobile phone.

For details on the BLUETOOTH connection procedure, see "How to Make Wireless Connection with BLUETOOTH Devices." The BLUETOOTH connection is established and **0** (BLUETOOTH) in the display stays on.

2 Start playback on the BLUETOOTH mobile phone, then adjust the volume.

Set the volume of the BLUETOOTH mobile phone to a moderate level, and press **VOLUME +/-** (7) on the system.
When the BLUETOOTH device is connected to the system (**0** BLUETOOTH) is lit), you can use hands-free calling even if the BLUETOOTH function is not activated.

When there is an incoming call or outgoing call, the system automatically changes to the BLUETOOTH function.

To call

Operate the BLUETOOTH mobile phone. Check that a dialing tone is heard on the system and talk into the system. If no dialing tone is heard, press **(call)** on the system for about 2 seconds to change the call to the system.

To receive a call

When an incoming call arrives, the playback or radio pauses and a ring tone is heard from the system. Press **(call)** on the system and talk into the system.

- Tips**
- No ring tone is heard from the system when an incoming call arrives, stop playback or radio and press **(call)** to talk.
 - You can use the hands-free calling when playback is completed.
 - During a call, press **VOLUME +/-** (7) on the system to adjust the volume. The volume of a call and that of a playback are set separately.

Note

- When using a mobile phone, keep it 50 cm or more away from the system. If they are too close together, noise may be heard.

To end a call

Press **(call)** on the system. If you were listening to music with any function when the call arrived, music will be resumed when the call has finished.

After use

- Do any of the following to terminate the BLUETOOTH connection.
 - Set the BLUETOOTH function of the BLUETOOTH device to off. For details, refer to the operating instructions supplied with the device.
 - Turn off the BLUETOOTH device.
 - Touch the system with the smartphone again to disconnect (NFC compatible smartphones only).

System button functions during a call

Available functions may vary depending on the BLUETOOTH mobile phone, or the profiles supported by the BLUETOOTH mobile phone. Refer to the operating instructions supplied with the BLUETOOTH mobile phone.

Status	(call)
Standby	<ul style="list-style-type: none"> Press once to start voice dial (voice dial compatible mobile phones only). Press and hold for a few seconds to redial the phone number that is dialed last time.
Outgoing call	<ul style="list-style-type: none"> Press once to cancel outgoing call. Press and hold for a few seconds to change call device between the system and mobile phone.
Incoming call	<ul style="list-style-type: none"> Press once to answer call. Press and hold for a few seconds to reject call.
During call	<ul style="list-style-type: none"> Press once to finish call. Press and hold for a few seconds to change call device between the system and mobile phone.

Using Hands-free Calling with Another BLUETOOTH Mobile Phone While Listening to Music

You can enjoy hands-free calling with another BLUETOOTH mobile phone while listening to music with a BLUETOOTH music player.
One-touch connection (NFC) cannot be used in this procedure.
Operations may vary depending on the BLUETOOTH device. This type of BLUETOOTH connection may not be established depending on the combination of the BLUETOOTH devices. Refer also to the operating instructions supplied with your BLUETOOTH devices.

1 Make the BLUETOOTH connections between the system and a BLUETOOTH music player via A2DP, and between the system and a BLUETOOTH mobile phone via HFP or HSP.

For details on the BLUETOOTH connection procedure, see "How to Make Wireless Connection with BLUETOOTH Devices." The BLUETOOTH connection is established and **0** (BLUETOOTH) in the display stays on.

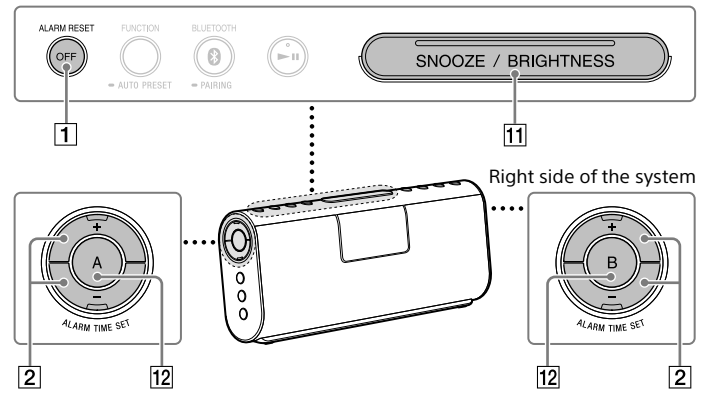
- Tips**
- To use only the calling function of a BLUETOOTH mobile phone that also has a music function, establish BLUETOOTH connection between the system and the mobile phone via HFP or HSP, not via A2DP.
 - Depending on the BLUETOOTH mobile phone, while the BLUETOOTH connection is established via HFP or HSP, the other BLUETOOTH connection via A2DP may also be connected with the same BLUETOOTH mobile phone. A BLUETOOTH music player cannot be connected with this system in this case.

Note

- To make the same connection with the same devices after turning the system off, follow this procedure again.

Setting the Alarm

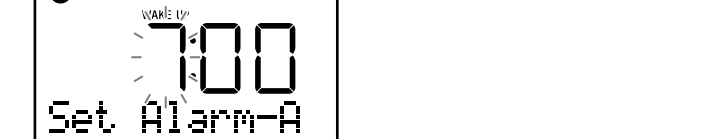
- You can set the alarm mode from the following.
 - "DAB," "FM":** Set the radio alarm.
 - "USB":** Set the alarm to sound from an iPhone/iPod via USB connection.
 - "BLUETOOTH":** Set the alarm to sound from a BLUETOOTH device, such as smartphone, iPod, etc., via BLUETOOTH connection.
 - "BUZZER":** Set the buzzer alarm.
- Set the clock to the current time before setting the alarm, so that the alarm will sound at the correct time. (See "Setting the clock for the first time.")



You can set alarm A and B. To set the alarm A, use **A** and **ALARM TIME SET +/-** (2). To set alarm B, use **B** and **ALARM TIME SET +/-** (2). The following explains how to set the alarm A.

1 Press and hold **A** until the hour begins to flash in the display.

- 0** and "WAKE UP" light up and the hour flashes in the display.



2 Press **ALARM TIME SET +/-** (2) to select the following setting items, then press **A** to confirm.

Each time you press **ALARM TIME SET +/-** (2), the currently selected item begins to flash.
Once you confirm the setting by pressing **A**, the following setting item begins to flash.

- Hour, minute:** Press and hold **ALARM TIME SET +/-** (2) to change the hour and minute digits quickly.

- Days of the week:** Select one of the following three types. Every day: "MON TUE WED THU FRI SAT SUN"
Week day: "MON TUE WED THU FRI"
Weekend: "SAT SUN"

3 Press **ALARM TIME SET +/-** (2) to select the alarm mode, then press **A** to confirm.

- Select one of the following.
 - "DAB," "FM":** Set the radio alarm. Proceed to step 4.
 - "USB":** Set the alarm to sound from an iPhone/iPod via USB connection. Skip step 4, and proceed to step 5.
 - "BLUETOOTH":** Set the alarm to sound from a BLUETOOTH device, such as smartphone, iPod, etc., via BLUETOOTH connection. Skip step 4, and proceed to step 5.
 - "BUZZER":** Set the buzzer alarm. The alarm setting is completed. The display returns to clock and **0** lights up in the display. You do not need to do step 4 or later.

4 Press **ALARM TIME SET +/-** (2) to select the radio station, then press **A** to confirm.

Select the desired preset number or "----" is the last station you listened to.

5 Press **ALARM TIME SET +/-** (2) to adjust the volume, then press **A** to confirm.

The alarm setting is completed. The display returns to clock and **0** lights up in the display.

6 When "USB" or "BLUETOOTH" is selected as the alarm mode, connect an iPhone/iPod via USB or a BLUETOOTH device before the alarm sounds.

If the system does not connect to the BLUETOOTH device, at the alarm time, the system tries to establish BLUETOOTH connection with the BLUETOOTH device connected to the system last time.
If the system cannot connect to the BLUETOOTH device, or does not connect to an iPhone/iPod via USB, the alarm will be the buzzer.
If you set "USB" as the alarm mode, and a smartphone is connected via USB, the alarm will be the buzzer.

To stop the alarm

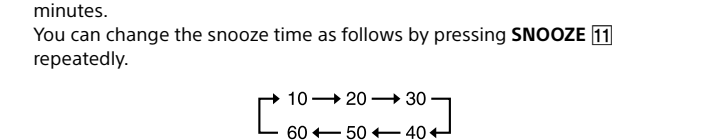
Press **ALARM RESET** (1) to turn off the alarm. The alarm will sound again at the same time the next day.

To doze for a few more minutes - Snooze function

1 Press **SNOOZE** (1) once while the alarm sounds.

The alarm sound turns off but will automatically come on again after about 10 minutes.

You can change the snooze time as follows by pressing **SNOOZE** (1) repeatedly.



To stop the snooze timer, press **ALARM RESET** (1).

System button functions for the alarm function

To	Do this
Confirm an alarm time setting	Press ALARM TIME SET +/- (2). The setting will be displayed for about 4 seconds.
Change an alarm time setting	<ol style="list-style-type: none"> Press and hold ALARM TIME SET +/- (2) until the alarm time digits begin to change in the display. You can change the alarm time step by step by pressing ALARM TIME SET +/- (2) repeatedly. Release ALARM TIME SET +/- (2) when the desired alarm time is displayed.
Turn off the alarm sound once	Press SNOOZE (1) once while the alarm sounds.
Stop the alarm	Press ALARM RESET (1).
Deactivate the alarm	Press A again. 0 turns off in the display, and the alarm function is deactivated. To activate the alarm again, press A again.

Tip

- Even if the alarm is deactivated, the alarm will be activated when you change the alarm setting.

Notes

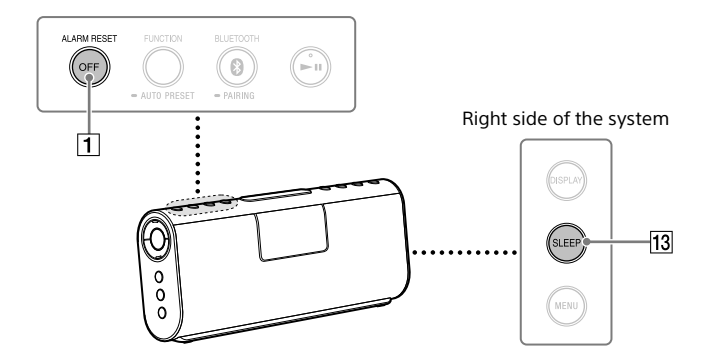
- When "USB" or "BLUETOOTH" is selected as the alarm mode, only the buzzer alarm will sound if an iPhone/iPod is not connected via USB, or a BLUETOOTH device is not connected, or music is not stored in the device or the device is turned off.
- The volume of the buzzer is not adjustable.
- If the same alarm time is set for both alarm A and B, alarm A takes priority.
- If no operation is performed while the alarm is sounding, the alarm will stop after about 60 minutes.
- If the alarm mode is set to "USB," "BLUETOOTH," "FM" or "DAB," it will change to buzzer automatically.
- ALARM RESET** (1) is not pressed, the alarm will sound for about 5 minutes.
- If "0" lights up in the display, the alarm will not sound in the event of a power interruption. Replace the battery if "0" lights up.
- The snooze function cannot be set during a power interruption.
- During a power interruption, each alarm will sound at the set time only once.

Notes on the alarm in the event of a power interruption

- In the event of a power interruption, the buzzer alarm will last about 5 minutes if the battery is not weak. However, certain functions will be affected as follows:
 - The backlight will not light up.
 - If the alarm mode is set to "USB," "BLUETOOTH," "FM" or "DAB," it will change to buzzer automatically.
 - ALARM RESET** (1) is not pressed, the alarm will sound for about 5 minutes.
 - If "0" lights up in the display, the alarm will not sound in the event of a power interruption. Replace the battery if "0" lights up.
 - The snooze function cannot be set during a power interruption.
 - During a power interruption, each alarm will sound at the set time only once.

Setting the Sleep Timer

You can fall asleep listening to radio or music from the connected device using the sleep timer. The system stops radio or playback automatically after a preset duration.

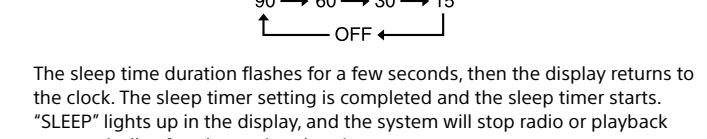


1 Press **SLEEP** (13) while listening to radio or music.

"SLEEP" lights up and the sleep time duration begins to flash in the display.

2 Press **SLEEP** (13) to select the sleep time duration.

You can change the sleep time duration (in minutes) as follows by pressing **SLEEP** (13) repeatedly. Only "OFF" does not flash.



To stop listening before the preset time

Press **OFF** (11).

To change the sleep timer setting

Press **SLEEP** (13). You can change the sleep time duration after the sleep timer has been activated.

To deactivate the sleep timer

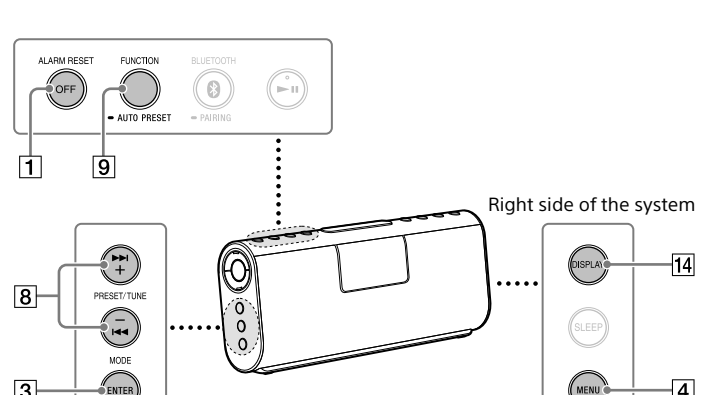
Press **SLEEP** (13) to select "OFF."

Notes

- Music playback on a device connected to the **AUDIO IN** jack does not stop automatically. To stop playback on the connected device, operate the connected device.

- When the alarm time is set during the sleep timer duration, the sleep timer will be deactivated automatically when the alarm sounds.

Useful DAB Functions



Changing the display

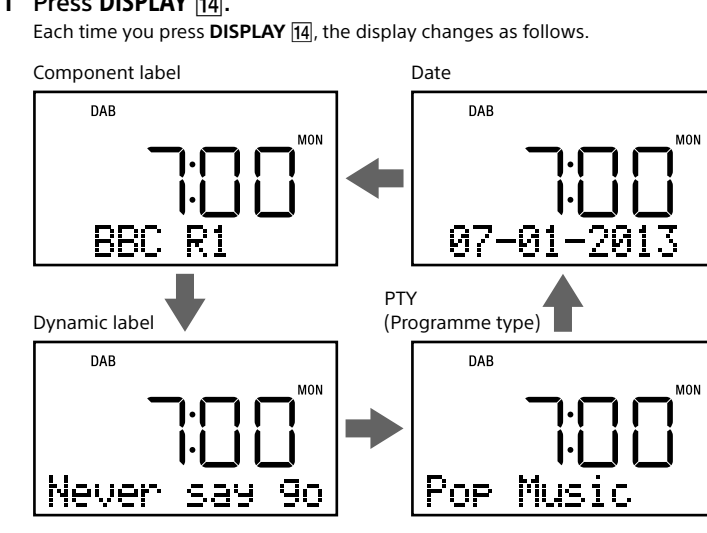
During DAB station reception, you can change the display mode by pressing **DISPLAY** (14).

Tip

- The selected display mode is retained, even if you turn the system off, or change the station.

1 Press **DISPLAY** (14).

Each time you press **DISPLAY** (14), the display changes as follows.



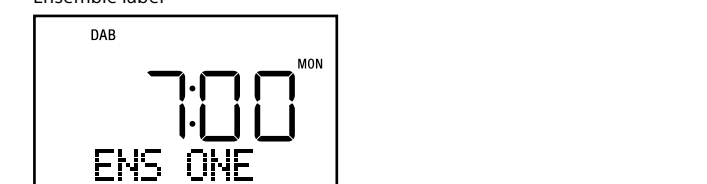
2 Press and hold **DISPLAY** (14).

Tip

- "Dynamic Labels" in DAB broadcasts display useful information, such as programme content, traffic updates, etc.
- A dynamic label can be up to 128 characters in length. Up to 12 characters can be shown at one time.

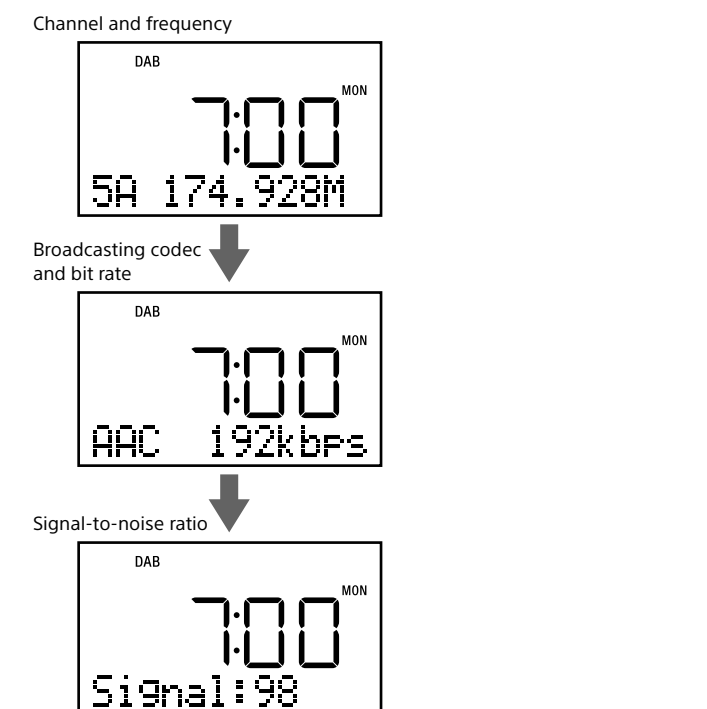
2 Press and hold **DISPLAY** (14).

Ensemble label



3 Press **DISPLAY** (14).

Each time you press **DISPLAY** (14), the display changes as follows.



By pressing **DISPLAY** (14) while the signal-to-noise ratio is shown, the display returns to step 1, or the display returns automatically after a few seconds.

Notes

- If there is no component label, "No Label" is displayed.
- If there is no ensemble label, "No Label" is displayed.
- If there is no programme type, "None" is displayed.
- If there is no dynamic label, the lower line of the display is blank.
- Characters that cannot be displayed appear as "..."
- Depending on the broadcasting station, the characters in dynamic labels may not be displayed properly.

Useful DAB menu functions

The DAB menu includes several convenient functions. To display the DAB menu, do the following.

1 Press **FUNCTION** (9) to select "DAB."

Press **FUNCTION** (9) repeatedly until "DAB" lights up in the display.

2 Press **MENU** (4).

The DAB menu is displayed.

3 Press **PRESET/TUNE +/-** (8) to select an item (see table below), then press **ENTER** (3) to confirm.

Menu item	Function and operation
Stations	Allows you to select a station while listening to another one.

1 Press **PRESET/TUNE +/-** (8) to select "Stations," then press **ENTER** (3) to confirm.

2 Press **PRESET/TUNE +/-** (8) to select "Stations manually," then press **ENTER** (3) to confirm.

Manual Preset See "Presetting DAB or FM radio stations manually."

Tune Mode See "Listening to DAB stations" and "Listening to preset DAB or FM radio stations."

Auto Scan Automatically scans receivable DAB stations, then creates a list of those stations.

1 Press **PRESET/TUNE +/-** (8) to select "Auto Scan," then press **ENTER** (3) to confirm.

2 Press **PRESET/TUNE +/-** (8) to select "Yes," then press **ENTER** (3) to confirm.

The system starts to scan, then creates a list of receivable DAB stations.

Note

- When auto scan is performed, an existing list will be updated and preset stations will be cleared. Preset desired stations again as necessary.

Manual Tune Allows you to tune and add DAB Band-III channels to your station list.

Can be used to assist with positioning the system or aerial, to optimize reception of a specific channel/frequency.

1 Press **PRESET/TUNE +/-** (8) to select "Manual Tune," then press **ENTER** (3) to confirm.

2 Press **PRESET/TUNE +/-** (8) to select the desired DAB channel, then press **ENTER** (3) to confirm.

The system searches stations, then creates a list of all stations belonging to the channel.

3 Press **PRESET/TUNE +/-** (8) to select the desired station, then press **ENTER** (3) to confirm.

Note

- If the desired channel selected in step 2 cannot be received, press **MENU** (4) to select another channel.

Menu Item Function and operation

DRC Value [DYNAMIC RANGE CONTROL]

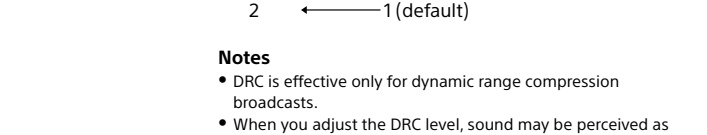
Makes quieter sounds easier to hear when the system is used in a noisy environment.

For DAB broadcasts with dynamic range compression, you can adjust the dynamic range by this system.

1 Press **PRESET/TUNE +/-** (8) to select "DRC Value," then press **ENTER** (3) to confirm.

2 Press **PRESET/TUNE +/-** (8) to select the DRC level, then press **ENTER** (3) to confirm.

The DRC level changes as follows:



Notes

- DRC is effective only for dynamic range compression broadcasts.
- When you adjust the DRC level, sound may be perceived as louder.

Prune Automatically deletes stations that are no longer available.

1 Press **PRESET/TUNE +/-** (8) to select "Prune," then press **ENTER** (3) to confirm.

The system deletes unavailable stations. When finished, "Finish" appears for about one second, then the system returns to the current station.

PTY (Programme Type)

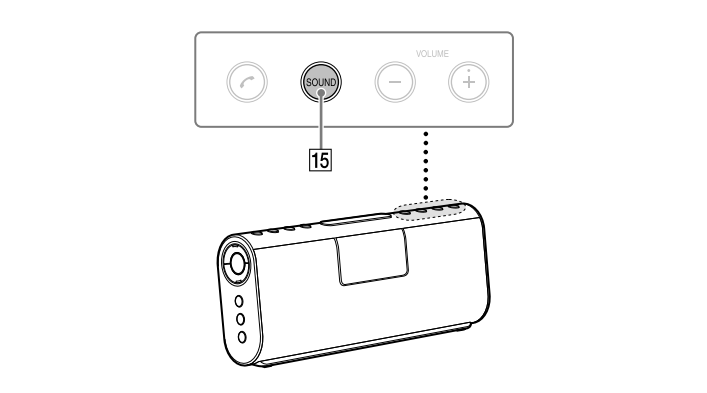
This function displays the current DAB broadcast programme type, such as NEWS, SPORTS, etc., as shown in the PTY list below.

If the current DAB broadcast does not include programme type, "NO PTY Data" appears.

PTY list

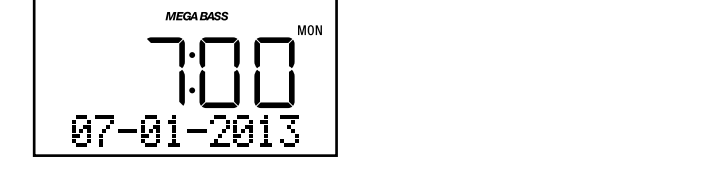
Programme type	Display
Undefined	None
News	News
Current Affairs	Affairs
Information	Info
Sport	Sport
Education	Educate
Drama	Drama
Culture	Arts
Science	Science
Varied	Talk
Pop Music	Pop
Rock Music	Rock
Easy Listening Music	Easy
Light Classical	Classics
Serious Classical	Classics
Other Music	Other M
Weather	Weather
Finance	Finance
Children's programmes	Children
Social Affairs	Factual
Religion	Religion
Phone In	Phone In
Travel	Travel
Leisure	Leisure
Jazz Music	Jazz
Country Music	Country
Nation Music	Nation M
Oldies Music	Oldies
Folk Music	Folk
Documentary	Document

Enjoying the Sound Effect Setting



1 Press **SOUND** (15) to select the sound effect.

The sound effect setting lights up in the display.



You can change the sound effect as follows by pressing **SOUND** (15) repeatedly.

Display	Sound effect
MEGA BASS	High-quality bass sound will be heard.
MEGA BASS	Both high-quality bass and surround sound will be heard.
MEGA Xpand	Surround sound will be heard.
Off	The sound effect is off.

► Others

Replacing the Battery

CAUTION

When to replace the battery

When the battery becomes weak, "000" lights up in the display. If a power interruption occurs while the battery is weak, the current time and alarm will be erased.
Replace the battery with a Sony CR2032 lithium battery. Use of another battery may cause