

FM/AM Clock Radio

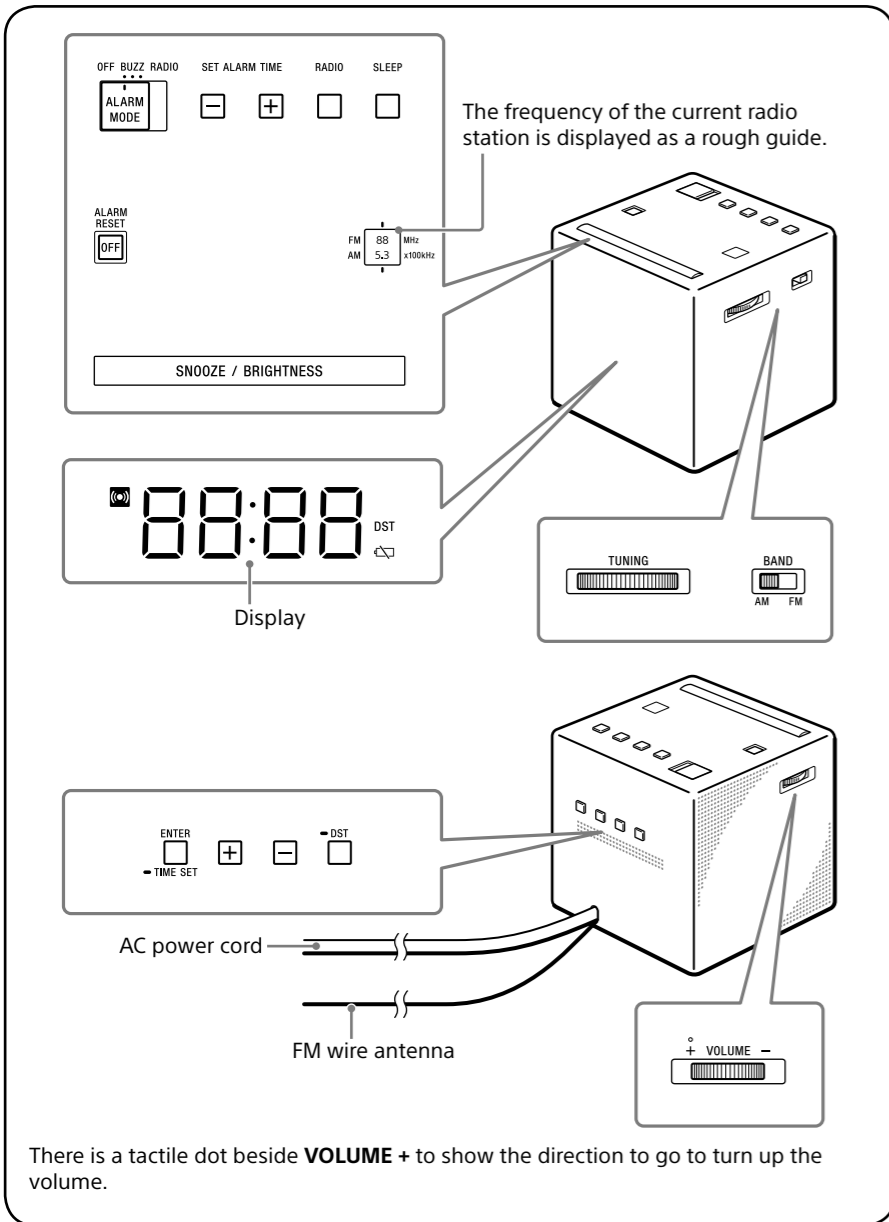
Operating Instructions
Инструкция по эксплуатации (Переход назад)



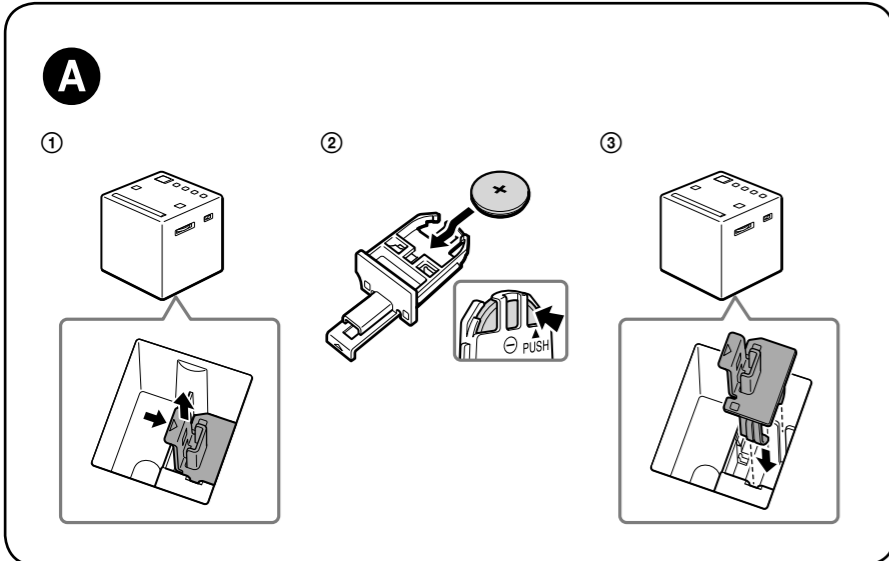
©2014 Sony Corporation Printed in China

<https://www.sony.net/>

ICF-C1



There is a tactile dot beside **VOLUME +** to show the direction to go to turn up the volume.



English

Before operating the unit, please read this guide thoroughly and retain it for future reference.

WARNING

To reduce the risk of fire, do not cover the ventilation opening of the appliance with newspapers, tablecloths, curtains, etc. Do not expose the appliance to naked flame sources (for example, lighted candles).

To reduce the risk of fire or electric shock, do not expose this apparatus to dripping or splashing, and do not place objects filled with liquids, such as vases, on the apparatus.

Do not install the appliance in a confined space, such as a bookcase or built-in cabinet.

Do not expose batteries or apparatus with battery-installed to excessive heat such as sunshine, fire or the like.

Do not ingest the battery, Chemical Burn Hazard

(The remote control supplied with) This product contains a coin/button cell battery. If the coin/button cell battery is swallowed, it can cause severe internal burns in just 2 hours and can lead to death.

Keep new and used batteries away from children. If the battery compartment does not close securely, stop using the product and keep it away from children.

If you think batteries might have been swallowed or placed inside any part of the body, seek immediate medical attention.

As the main plug is used to disconnect the unit from the mains, connect the unit to an easily accessible AC outlet. Should you notice an abnormality in the unit, disconnect the main plug from the AC outlet immediately.

The unit is not disconnected from the AC power source (mains) as long as it is connected to the wall outlet, even if the unit itself has been turned off.

The nameplate and important information concerning safety are located on the bottom exterior.

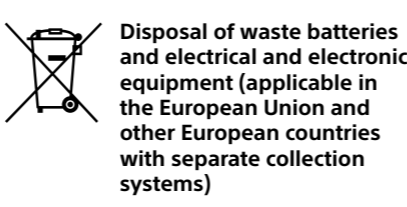
CAUTION

Danger of explosion if battery is incorrectly replaced. Replace only with the same type.

The validity of the CE marking is restricted to only those countries where it is legally enforced, mainly in the countries EEA (European Economic Area) and Switzerland.

Production Date

The date of manufacture is specified on the barcode label on the carton after the word "Produced" in the following format: MM-YYYY, where MM-month and YYYY-the year of manufacturing.



The Sony ICF-C1 is an FM and AM radio with a built-in clock.

Precautions

- Operate the unit on the power sources specified in "Specifications."
- To disconnect the power cord (mains lead), pull it out by the plug, not the cord.
- Do not leave the unit under lighting equipment, in a location near a heat source, such as a radiator or air duct, or in a place subject to direct sunlight, excessive dust, mechanical vibration, or shock.
- Allow adequate air circulation to prevent internal heat build-up. Do not place the unit on a surface (a rug, blanket, etc.) or near materials (a curtain) that might block the ventilation holes.
- Should any solid object or liquid fall into the unit, unplug the unit and have it checked by a qualified personnel before operating it any further.
- To clean the casing, use a soft dry cloth. Do not use any type of solvent, such as alcohol or benzene, which may damage the finish.
- Do not connect the antenna lead to the external antenna.

NOTES ON LITHIUM BATTERY

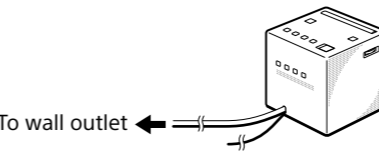
- Battery may explode if handled incorrectly. Do not recharge, disassemble or dispose of in fire.
- Dispose of used battery promptly. Keep the lithium battery out of the reach of children. Should the battery be swallowed, immediately consult a doctor.
- Wipe the battery with a dry cloth to assure a good contact.
- Be sure to observe the correct polarity when installing the battery.
- Do not hold the battery with metallic tweezers, otherwise a short-circuit may occur.
- Batteries have a recommended use-by date for proper use. When replacing the battery, check the expiration date of the new battery indicated on the package, etc.

If you have any questions or problems concerning your unit, please consult your nearest Sony dealer.

Getting Started

Connecting to an AC power source

Connect the AC power cord to a wall outlet.



About the battery as a backup power source

This unit needs a CR2032 battery (supplied) as a backup power source to keep the clock operating during a power interruption.

When to replace the battery

When the battery is discharged, "⏻" appears on the display. If a power interruption occurs while the battery is discharged, the current time and alarm will be erased.

Installing and replacing the backup battery

- Keep the AC plug connected to the wall outlet and remove the battery compartment on the bottom of the unit by pulling it up while sliding the tab. (See Fig. 1-1.)
- Insert a new battery into the battery compartment with the + side facing up. To remove the battery from the battery compartment, push it out from the side marked **PUSH**. (See Fig. 1-2.)
- Insert the battery compartment back into the unit along the groove and push it from above until it clicks. (See Fig. 1-3.) The tab locks the battery compartment.
- Press **RADIO** to remove "⏻" from the display.

Notes

- When you replace the battery, do not disconnect the AC plug from the wall outlet. Otherwise, the current date, current time and alarm will be erased.
- If the unit will be left unplugged for a long time, remove the battery to avoid any damage that may be caused by leakage or corrosion.

Setting the clock

- Press and hold **ENTER/TIME SET** for more than 2 seconds. You will hear a beep and the last two digits of the year will start to flash on the display.
- Press + or - repeatedly to select the year, and then press **ENTER/TIME SET**.
ENTER/TIME SET, +, -
- Repeat step 2 to set the month, day and time. After setting the time, two short beeps will sound and the seconds will start incrementing from zero.

Note

- If you do not press any button for about 1 minute while setting the clock, clock setting mode will be canceled.

To change the display to indicate daylight saving time (summer time)

Change the daylight saving time (summer time) adjustment setting according to the following procedure. Press and hold **DST** for more than 3 seconds. "DST" appears on the display and the clock display switches to daylight saving time (summer time). To deactivate the daylight saving time (summer time) adjustment, press and hold **DST** for more than 3 seconds again.

Operations

Playing the radio

- Press **RADIO** to turn on the radio.
- Set **BAND** to the desired band (**AM** or **FM**).
BAND, AM, FM
- Tune to the desired station using **TUNING**.
- Adjust the volume using **VOLUME +/-**. To turn off the radio, press **ALARM RESET/OFF**.

Setting the alarm

The alarm sound can be selected from **RADIO** (radio) or **BUZZ** (buzzer).

- Before setting the alarm**
- Make sure to set the clock. (See "Setting the clock.")
 - To set the radio alarm, first tune to a station and adjust the volume. (See "Playing the radio.")

To set the alarm

- Set **ALARM MODE** to the desired alarm sound (**RADIO** or **BUZZ**).
OFF, BUZZ, RADIO, ALARM MODE
- Press **SET ALARM TIME +** or - repeatedly to set the desired time while the alarm time appears on the display.
BUZZ, RADIO, SET ALARM TIME, ALARM MODE, +, -

While setting the alarm time, "⌚" flashes on the display.

When the alarm time setting operation is complete, the clock display returns after a few seconds and "⌚" changes from flashing to fully lit. At the set time, the radio will turn on, or the buzzer will sound gradually increasing in volume. ("⌚" flashes on the display.)

To stop the alarm

Press **ALARM RESET/OFF** to turn off the alarm. The alarm will sound again at the same time the next day.

To doze for a few more minutes

Press **SNOOZE/BRIGHTNESS**. The sound turns off, but will automatically come on again after about 10 minutes. Each time you press **SNOOZE/BRIGHTNESS**, the snooze time changes as follows:
10 → 20 → 30 → 40 → 50 → 60

The display shows the snooze time for about 4 seconds and returns to show the current time. ("⌚" flashes on the display.)

To deactivate the alarm

Set **ALARM MODE** to **OFF**. "⌚" disappears from the display.

Notes

- The alarm time setting cannot be changed if **ALARM MODE** is set to **OFF**. If **SET ALARM TIME +** or - is pressed, "OFF" appears on the display for about 0.5 seconds.
- ENTER/TIME SET** and **DST** are unavailable while the alarm is sounding or the snooze function is turned on.
- If no operation is performed while the alarm is sounding, the alarm will stop after about 60 minutes.

Notes on the alarm in the event of a power interruption

If the set alarm time comes in the event of a power interruption or a power interruption occurs while the alarm is sounding, the display will turn off and the alarm will not sound, and the alarm status will be as follows:

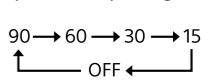
- If power returns within 60 minutes from the alarm set time, the alarm will sound.
- If the power interruption occurred while the snooze function was operating, the snooze function will continue.
- If the snooze time had passed when the power interruption occurred, the alarm will sound after power returns.

In this status, if "⏻" does not light up, **ALARM RESET/OFF**, **SNOOZE/BRIGHTNESS** and alarm mode functions are available. The snooze time will be fixed to only 10 minutes if **SNOOZE/BRIGHTNESS** has been pressed.

Setting the sleep timer

You can fall asleep to the radio using the sleep timer, which turns off the radio automatically after a preset duration.

Press **SLEEP**. The radio turns on. Each time you press **SLEEP**, the duration (in minutes) changes as follows:



The radio will play for the duration you set, then shut off. To deactivate the sleep timer, press **SLEEP** repeatedly to set the sleep timer to "OFF."

To turn off the radio before the preset time

Press **ALARM RESET/OFF**.

To use both the sleep timer and alarm

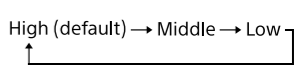
You can fall asleep to the radio and also be awakened by the radio or buzzer alarm at the preset time. Set the alarm, then set the sleep timer.

Note

- When the alarm is set to sound during the sleep timer duration, the sleep timer will be deactivated automatically when the alarm sounds.

Setting the brightness of the display

Three levels of brightness are available. Press **SNOOZE/BRIGHTNESS**. Each time you press **SNOOZE/BRIGHTNESS**, the brightness of the display changes as follows:



Note

- When the alarm is sounding or the snooze function is active, the brightness of the display cannot be changed.

General information

Troubleshooting

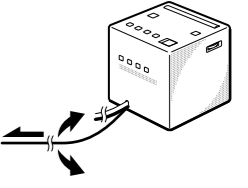
Should any problems persist after you have made the following checks, consult your nearest Sony dealer.

The clock flashes "0:00" after a power interruption.

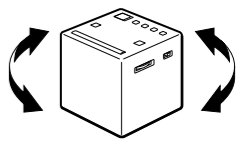
- The battery is discharged. Remove the old battery and insert a new one.

Unsatisfactory reception

- Extend the FM wire antenna fully to increase reception sensitivity.



- Rotate the unit horizontally for optimum reception. A ferrite bar AM antenna is built into the unit.



- Do not operate the unit over a steel desk or metal surface, as this may lead to interference.

The radio or buzzer alarm does not sound at the preset alarm time.

- Check that "⌚" appears on the display.

The radio alarm is activated but no sound is emitted at the preset alarm time.

- Adjust the volume using **VOLUME +/-**.

Specifications

Time display
24-hour system

Frequency range

Band	Frequency
FM	87.5 MHz - 108 MHz
AM	531 kHz - 1,602 kHz

Speaker
Approx. 6.6 cm dia., 8 Ω

Power output
100 mW (at 10% harmonic distortion)

Power requirements
230 V AC, 50 Hz
For power backup: 3 V DC, one CR2032 battery

Dimensions
Approx. 101 mm × 102 mm × 101 mm (w/h/d) including projecting parts and controls

Mass
Approx. 480 g (including CR2032 battery)

Supplied contents
Main unit: ICF-C1 (1)
CR2032 battery (1)
Operating Instructions (this manual) (1)

Design and specifications are subject to change without notice.

