

Noise Canceling Headphones

Operating Instructions **US**

Mode d'emploi **FR**

Manual de instrucciones **ES**

DIGITAL NC

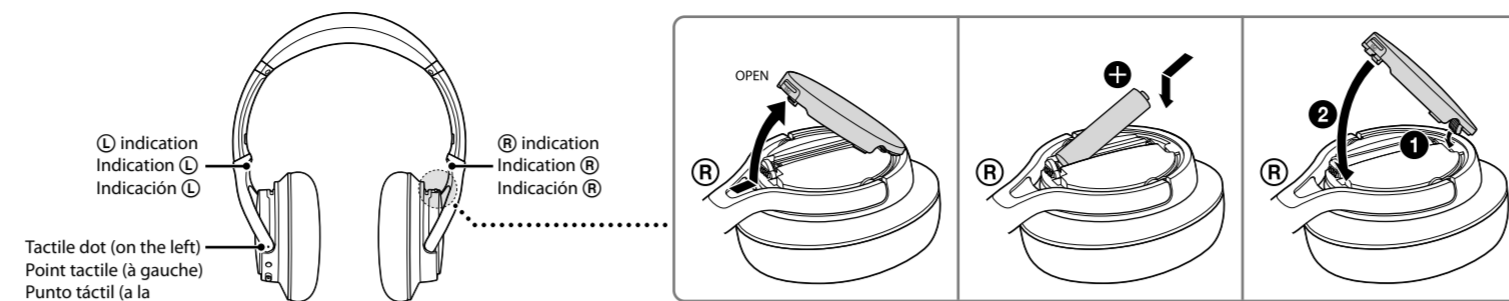
Made for
iPod iPhone iPad

MDR-10RNCiP

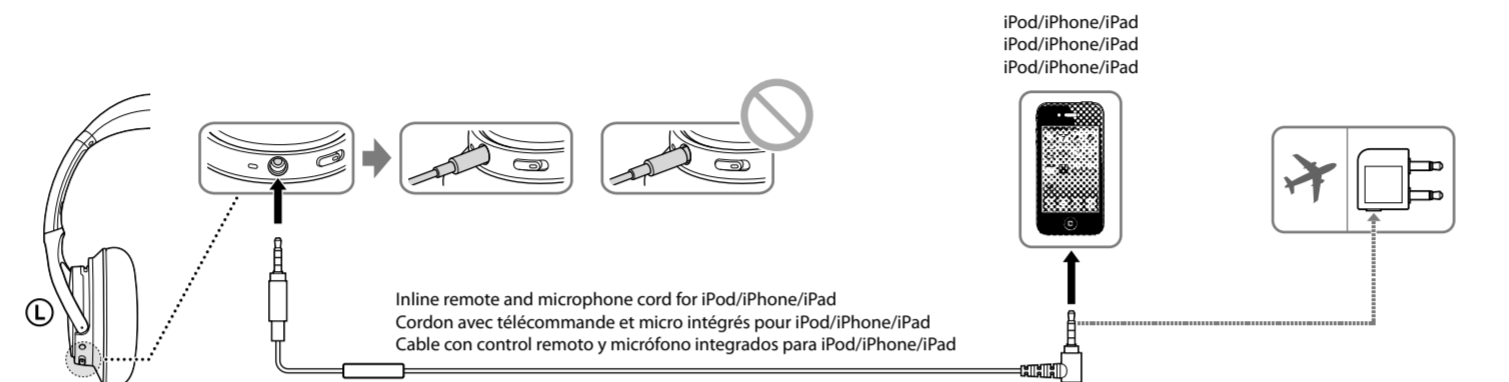
© 2013 Sony Corporation Printed in Malaysia

How to use/Mode d'utilisation/Modo de uso

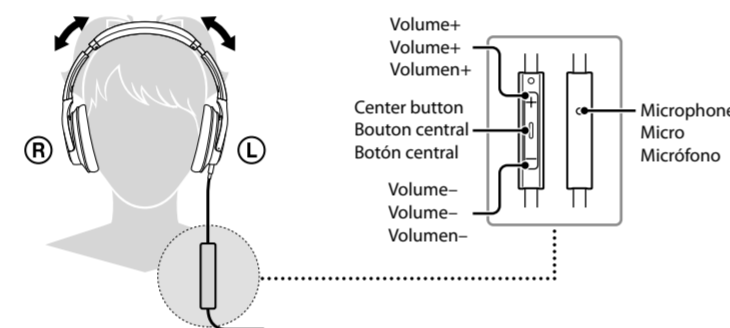
1 Installing a battery/Installation d'une pile/Colocación de la pila



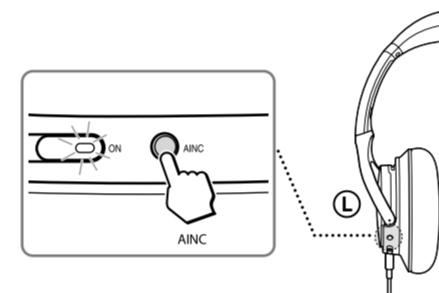
2 Connecting/Raccordement/Conexión



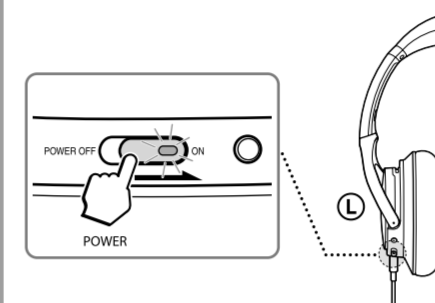
4 Wearing and controlling/Port et contrôles/Colocación y control



Using the AINC function/Utilisation de la fonction RBAI/Usos de la función de inteligencia artificial de supresión de ruido



3 Turning on the power/Mise sous tension/Encendido



After use

Turn off the power of the headphones.

Après utilisation

Eteignez le casque.

Después del uso

Apague los auriculares.

Specifications

General

Type	Closed, dynamic
Driver units	40 mm, dome type (CCAW adopted)
Power handling capacity	100 mW
Impedance	50 Ω at 1 kHz (when the power is on) 24 Ω at 1 kHz (when the power is off)
Sensitivity	101 dB/mW (when the power is on) 100 dB/mW (when the power is off)
Frequency response	6 Hz – 24,000 Hz
Total Noise Suppression Ratio ¹⁾	Approx. 22 dB ²⁾
Power source	DC 1.5 V, 1 × LR03 (size AAA) battery
Mass	Approx. 205 g (7.3 oz) including battery, not including cord
Talk microphone	Open circuit voltage level (Inline remote and microphone cord for iPod/iPhone/iPad) -42 dB (0 dB = 1 V/Pa)

Battery life

Battery	Approx. hours ³⁾
Sony alkaline battery	20 hours ⁴⁾
LR03 SIZE AAA	

Note

The supplied battery was included in the package during manufacturing (as a convenience to the user), it is possible that the battery life may be depleted by the time of purchase. The actual life of the supplied battery may be shorter than the standard time described in this manual when using a fresh battery.

When the battery is low

Replace the battery with a new one when the POWER indicator blinks quickly or lights off.

Included items

- Headphones (1)
- Inline remote and microphone cord for iPod/iPhone/iPad (1.2 m (47 1/4 in), four-conductor gold plated L-shaped stereo mini plug) (1)
- AAA battery (1)
- Plug adaptor for in-flight use⁵⁾ (1)
- Carrying case (1)
- Operating Instructions (1)
- Warranty card (USA) (1)
- Warranty card (Canada) (1)

¹⁾ Under the Sony measurement standard.

²⁾ Equivalent to approx. 99.4% reduction of energy of sound compared with not wearing headphones.

³⁾ At 1 kHz, 0.1 mW + 0.1 mW output

⁴⁾ Time stated above may vary, depending on the temperature or conditions of use.

⁵⁾ May not be compatible with some in-flight entertainment services.

Design and specifications are subject to change without notice.

Compatible iPod/iPhone/iPad models

- You can use the headphones with only the following models supporting remote control. Update your iPod, iPhone or iPad to the latest software before use. In the Operating Instructions, iPod, iPhone and iPad are collectively described as "iPod" except in special cases.
- iPod 5
 - iPhone 5
 - iPhone 4S
 - iPhone 4
 - iPhone 3GS
 - iPad (4th generation)
 - iPad mini
 - iPad (3rd generation)
 - iPad 2
 - iPod touch (5th generation)
 - iPod touch (4th generation)
 - iPod touch (3rd generation)
 - iPod touch (2nd generation)
 - iPod classic 120GB/160GB (2009)
 - iPod nano (7th generation)
 - iPod nano (6th generation)
 - iPod nano (5th generation)
 - iPod nano (4th generation)
 - iPod shuffle (4th generation)
 - iPod shuffle (3rd generation)

On copyright

iPod, iPhone, iPod, iPod classic, iPod nano, and iPod touch are trademarks of Apple Inc., registered in the U.S. and other countries. "Made for iPod", "Made for iPhone", and "Made for iPad" mean that an electronic accessory has been designed to connect specifically to iPod, iPhone, or iPad, respectively, and has been certified by the developer to meet Apple performance standards. Apple is not responsible for the operation of this device or its compliance with safety and regulatory standards.

English Noise Canceling Headphones

WARNING

The validity of the CE marking is restricted to only those countries where it is legally enforced, mainly in the countries EEA (European Economic Area).

The device complies with Part 15 of the FCC Rules. Operation is subject to the following two conditions: (1) this device may not cause harmful interference, and (2) this device must accept any interference received, including interference that may cause undesired operation.

Note

This equipment has been tested and found to comply with the limits for a Class B digital device, pursuant to Part 15 of the FCC Rules. These limits are designed to provide reasonable protection against harmful interference in a residential installation. This equipment generates, uses and can radiate radio frequency energy and, if not installed and used in accordance with the instructions, may cause harmful interference to radio communications. However, there is no guarantee that interference will not occur in a particular installation. If this equipment does cause harmful interference to radio or television reception, which can be determined by turning the equipment off and on, the user is encouraged to try to correct the interference by one or more of the following measures:

- Reorient or relocate the receiving antenna.
- Increase the separation between the equipment and receiver.
- Connect the equipment into an outlet on a circuit different from that to which the receiver is connected.
- Consult the dealer or an experienced radio/TV technician for help.

You are cautioned that any changes or modifications not expressly approved in this manual could void your authority to operate this equipment.

Using the Center button (Inline remote and microphone cord for iPod/iPhone/iPad)

Operation	Explanation
Single press	Plays/pauses a track of the connected iPod.
Double press	Skips to the next track.
Triple press	Skips to the previous track.
Long press	Starts the "VoiceOver" feature (if available).
Press once when call is incoming	Answers the call.
Press again	Ends the call.
Hold down for about two seconds and release	Rejects an incoming call (two low beeps confirm the call was rejected).

* Availability of the "VoiceOver" feature depends on iPod and its software version.

Note

Be careful not to unintentionally press any buttons when you carry your iPod with the inline remote and microphone cord connected.

Using the AI Noise Canceling function

The AI Noise Canceling function analyzes environmental ambient sound components and automatically selects the most effective noise canceling mode. When you press the AINC button while the POWER switch is set to "ON", beep sounds and the headphones start the analysis. During the analysis (approx. 3 seconds), the POWER indicator blinks, and the volume level is reduced from the headphones. When the analysis is completed, the most effective noise canceling mode is selected and the volume level is revert to the previous level.

Noise canceling mode types

- NC Mode A: Noise mainly in an airplane is effectively reduced.
- NC Mode B: Noise mainly in a bus or a train is effectively reduced.
- NC Mode C: Noise mainly found in an office environment (PC, copier, air ventilation, etc.) is effectively reduced.

Tips

- When the headphones are turned on, NC Mode A is set.
- Press the AINC button again to reset the noise canceling mode if ambient noise has changed, such as when you move outdoors from a room.

Beep sound and indicator status

Status/Function	Beep sound	POWER indicator
Power off	No beep	Lights off
Power on	Beep once	Lights on
AINC	Beep twice	Blinks twice
Low battery	Long beep (2 seconds)	Blinks quickly (30 seconds)

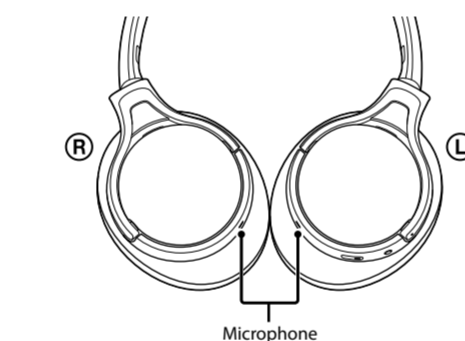
Notes on use

What is noise canceling?

The noise canceling circuit actually senses outside noise with built-in microphones and sends an equal-but-opposite canceling signal to the headphones.

Notes on the noise canceling function

- Adjust the earpads so that they cover your ears, otherwise noise canceling will not function properly.
- The noise canceling effect may vary depending on how you wear the headphones.
- Do not cover the microphone of the headphones with your hands. The noise canceling function may not work properly.



- After you turn on the power of the headphones, you may hear a slight hiss. This is the operating sound of the noise canceling function, not a malfunction.

- The noise canceling function works for noise in the low frequency band primarily. Although noise is reduced, it is not canceled completely.
- The noise canceling effect may not be pronounced in a very quiet environment, or some noise may be heard.
- When you use the headphones in a train or a car, noise may occur depending on street conditions.
- Howling may occur if you do not wear the headphones correctly.
- Howling may occur if you place an object such as finger close to inside of the headphones. Keep it away from the headphones.
- Mobile phones may cause interference and noise. Should this occur, locate the headphones further away from the mobile phone.

Notes on using on the airplane

Do not use the headphones when use of electronic equipment is prohibited or when use of personal headphones for in-flight entertainment services is prohibited.

Notes on handling

- To disconnect the cord, pull it out by the plug, not the cord. Otherwise the cord may break.
- When connecting the cord, make sure to fully insert the plug. If the plug is not fully inserted, no sound may result.
- Because the headphones are designed to fit closely in your ears, forcing them against your ears may result in eardrum damage. Avoid using the headphones where they are liable to be struck by people or other objects, such as a ball, etc.
- Pressing the headphones against your ears may produce a diaphragm click sound. This is not a malfunction.
- Clean the headphones with a soft dry cloth.
- Do not leave the plug dirty otherwise the sound may be distorted.
- Be sure to consult a Sony dealer when the earpads become dirty or damaged, or when the headphones require repair work.

- Do not leave the headphones in a location subject to direct sunlight, heat or moisture.
- Do not subject the headphones to excessive shock.
- Handle the driver units carefully.
- If you feel drowsy or sick while using this headphones, stop use immediately.

Notes on headphones

High volume may affect your hearing. For traffic safety, do not use while driving or cycling.

As headphones reduce outside sounds, they may cause a traffic accident. Also, avoid listening with your headphones in situations where hearing must not be impaired, for example, a railroad crossing, a construction site, etc.

Note on static electricity

In particularly dry air conditions, noise or sound skipping may occur, or mild tingling may be felt on your ears. This is a result of static electricity accumulated in the body, and not a malfunction of the headphones. The effect can be minimized by wearing clothes made from natural materials.

If you have any questions or problems concerning the system that are not covered in this manual, please consult the nearest Sony dealer.

Troubleshooting

No sound

- Replace the battery with a new one.
- You can use the headphones even without turning on the power. In this case, the noise canceling function, Digital Equalizer and S-Master are not active, and the headphones operate as passive headphones.
- Check the connection of the headphones and the equipment.
- Check that the connected equipment is turned on.
- Turn up the volume of the connected equipment.

The noise canceling effect is not sufficient

- The noise canceling function is effective in low frequency ranges such as airplanes, trains, or offices (near air-conditioning, etc.) and is not as effective for higher frequencies, such as human voices.
- Turn on the headphones.

Distorted sound

- Turn down the volume of the connected equipment.



4 4 8 6 7 7 1 1 * (1)

