

# SONY®

## Personal Audio System

Operating Instructions

Getting started

Listening to a CD

Listening to the radio

Listening to a file on a USB device

Listening to music with optional audio components

Listening to music through a BLUETOOTH connection

Additional information

Troubleshooting

Precautions/Specifications

CMT-X3CD

## WARNING

To reduce the risk of fire, do not cover the ventilation opening of the appliance with newspapers, tablecloths, curtains, etc. Do not expose the appliance to naked flame sources (for example, lighted candles).

To reduce the risk of fire or electric shock, do not expose this appliance to dripping or splashing, and do not place objects filled with liquids, such as vases, on the appliance.

As the main plug is used to disconnect the unit from the mains, connect the unit to an easily accessible AC outlet. Should you notice an abnormality in the unit, disconnect the main plug from the AC outlet immediately.

Do not install the appliance in a confined space, such as a bookcase or built-in cabinet.

Do not expose batteries or appliances with battery-installed to excessive heat, such as sunshine and fire.

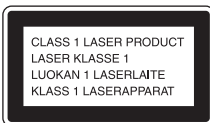
The unit is not disconnected from the mains as long as it is connected to the AC outlet, even if the unit itself has been turned off.

Excessive sound pressure from earphones and headphones can cause hearing loss.

The nameplate is located on the bottom of the unit.

## CAUTION

Risk of explosion if the battery is replaced by an incorrect type.



This appliance is classified as a CLASS 1 LASER product. This marking is located on the bottom exterior.

## Notice for customers: the following information is only applicable to equipment sold in countries applying EU directives.

This product has been manufactured by or on behalf of Sony Corporation.  
EU Importer: Sony Europe B.V.  
Inquiries to the EU Importer or related to product compliance in Europe should be sent to the manufacturer's authorized representative, Sony Belgium, bijkantoor van Sony Europe B.V., Da Vincilaan 7-D1, 1930 Zaventem, Belgium.

Hereby, Sony Corporation declares that this equipment is in compliance with Directive 2014/53/EU.

The full text of the EU declaration of conformity is available at the following internet address: <http://www.compliance.sony.de/>



The validity of the CE marking is restricted to only those countries where it is legally enforced, mainly in the countries EEA (European Economic Area) and Switzerland.



## Disposal of waste batteries and electrical and electronic equipment (applicable in the European Union and other countries with separate collection systems)

This symbol on the product, the battery or on the packaging indicates that the product and the battery shall not be treated as household waste. On certain batteries this symbol might be used in combination with a chemical symbol. The chemical symbol for lead (Pb) is added if the battery contains more than 0.004% lead. By ensuring that these products and batteries are disposed of correctly, you will help to prevent potentially negative consequences for the environment and human health which could be caused by inappropriate waste handling. The recycling of the materials will help to conserve natural resources. In case of products that for safety, performance or data integrity reasons require a permanent connection with an incorporated battery, this battery should be replaced by qualified service staff only. To ensure that the battery and the electrical and electronic equipment will be treated properly, hand over these products at end-of-life to the appropriate collection point for the recycling of electrical and electronic equipment. For all other batteries, please view the section on how to remove the battery from the product safely. Hand the battery over to the appropriate collection point for the recycling of waste batteries. For more detailed information about recycling of this product or battery, please contact your local Civic Office, your household waste disposal service or the shop where you purchased the product or battery.

---

# Before operating this system

Malfunctions that occur during the normal use of the system will be repaired by Sony in accordance with the conditions defined in the limited warranty for this system. However, Sony will not be liable for any consequences arising from a failure to play caused by a damaged or malfunctioning system.

## Music discs encoded with copyright protection technologies

This product is designed to playback discs that conform to the Compact Disc (CD) standard. Recently, various music discs encoded with copyright protection technologies are marketed by some record companies.

Please be aware that among those discs, there are some that do not conform to the CD standard and may not be playable by this product.

## Note on DualDiscs

A DualDisc is a two sided disc product which mates DVD recorded material on one side with digital audio material on the other side. However, since the audio material side does not conform to the Compact Disc (CD) standard, playback on this product is not guaranteed.

# Table of Contents

|                                    |   |
|------------------------------------|---|
| Before operating this system ..... | 3 |
|------------------------------------|---|

---

## Getting started

|                                         |   |
|-----------------------------------------|---|
| Location and Function of Controls ..... | 6 |
| Preparing the Remote .....              | 9 |
| Setting the clock.....                  | 9 |

---

## Listening to a CD

|                                               |    |
|-----------------------------------------------|----|
| Playing a CD-DA/MP3/WMA disc .....            | 10 |
| To change the play mode .....                 | 10 |
| Creating your own program (Program Play)..... | 11 |

---

## Listening to the radio

|                                        |    |
|----------------------------------------|----|
| Tuning in a radio station .....        | 13 |
| Presetting radio stations .....        | 13 |
| Selecting a preset radio station ..... | 14 |

---

## Listening to a file on a USB device

|                                     |    |
|-------------------------------------|----|
| Playing a file on a USB device..... | 15 |
|-------------------------------------|----|

---

## Listening to music with optional audio components

|                                                           |    |
|-----------------------------------------------------------|----|
| Playing back the music of optional audio components ..... | 16 |
|-----------------------------------------------------------|----|

---

## Listening to music through a BLUETOOTH connection

|                                                                         |    |
|-------------------------------------------------------------------------|----|
| Pairing the system with a BLUETOOTH device and listening to music ..... | 17 |
| Listening to music through a registered device.....                     | 18 |
| Listening to music by one-touch action (NFC).....                       | 19 |

---

## Additional information

|                                                   |    |
|---------------------------------------------------|----|
| Setting the Automatic Standby function .....      | 20 |
| Setting the BLUETOOTH Standby mode .....          | 21 |
| Setting the wireless BLUETOOTH signal ON/OFF..... | 21 |
| Adjusting the sound .....                         | 22 |
| Using the timers.....                             | 22 |
| Setting the Sleep Timer.....                      | 22 |
| Setting the Play Timer.....                       | 22 |

---

## Troubleshooting

|                       |    |
|-----------------------|----|
| Troubleshooting ..... | 24 |
| Messages .....        | 27 |

---

## Precautions/Specifications

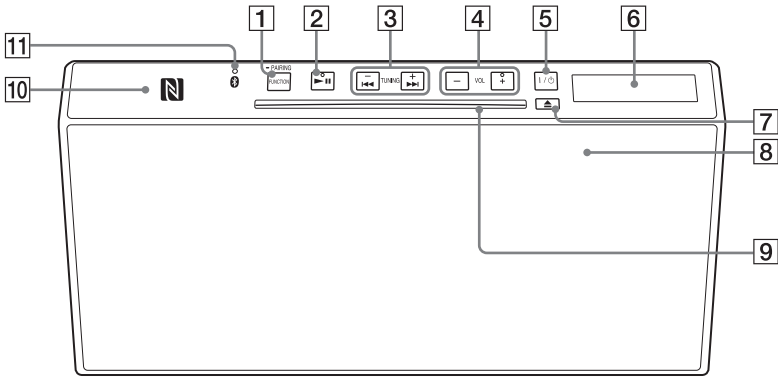
|                                          |    |
|------------------------------------------|----|
| Precautions .....                        | 28 |
| Compatible USB devices and versions..... | 29 |
| BLUETOOTH wireless technology .....      | 30 |
| Specifications.....                      | 31 |

# Location and Function of Controls

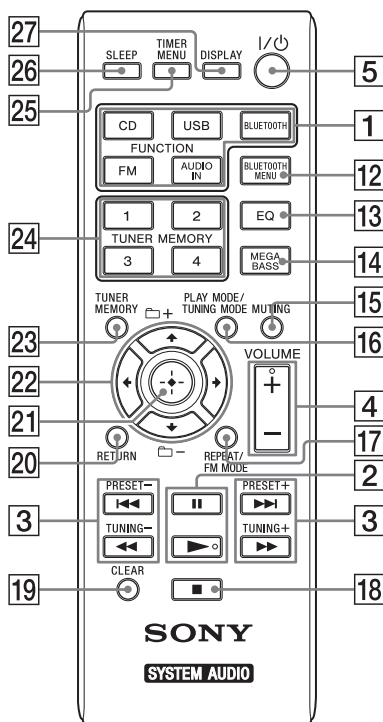
## Note

This manual mainly explains operations using the remote, but the same operations can also be performed using the buttons on the unit having the same or similar names.

## Unit (front/top)



## Remote



### 1 Unit: FUNCTION/PAIRING button

- Use to select the source. Each press changes to the next source in the following sequence:  
CD → USB → BT AUDIO → FM → AUDIO IN
- Press and hold to enter the BLUETOOTH Pairing mode.

**Remote: Function (CD/USB/BLUETOOTH/FM/AUDIO IN) buttons**  
Use to select the source.

### 2 Unit: ►|| (play/pause) button

**Remote: ► (play) / || (pause) button**  
Use to start or pause playback.

### 3 ◀◀/▶▶ (previous/next) buttons

Use to cue the beginning of a track or file.

### TUNING +/- button

Use to tune in a desired radio station.

### Remote: ◀◀/▶▶ (fast-rewind/fast-forward) buttons

Use to fast-forward/fast-rewind a track or file.

### Remote: PRESET +/- buttons

Use to recall the preset stations.

### 4 Unit: VOL +/- buttons

### Remote: VOLUME +/- button

Use to adjust the volume.

### 5 I/⏻ (power) button


Use to turn the power on or off.

### 6 Display window

### 7 ▲ (eject) button

Use to eject a CD.

### 8 Remote sensor

The IR mark  is not indicated on the unit.

### 9 Disk slot

Insert a CD.

### 10 N-Mark

Place a smartphone/tablet equipped with the NFC function close to this mark to perform BLUETOOTH registration, connection or disconnection by a one-touch action (page 19).

### 11 (BLUETOOTH) indicator

Lights up or blinks to show the BLUETOOTH connection status.

### 12 BLUETOOTH MENU button

Use to open or close the BLUETOOTH menu (page 17, 18, 21).

### 13 EQ button

Use to select a sound effect (page 22).

### 14 MEGA BASS button

Use to boost bass sound (page 22).

### 15 MUTING

Use to mute and unmute the sound.

### 16 PLAY MODE/TUNING MODE button

- Use to select the play mode (page 10).
- Use to select the tuning mode (page 13).

### 17 REPEAT/FM MODE button

- Use to select the repeat play mode (page 11).

- Use to select FM stereo or monaural reception (page 13).

**18 ■ (stop) button**

Use to stop a playback.

**19 CLEAR button**

Use to delete a programmed track (page 12).

**20 RETURN button**

Use to return to the previous status.

**21 ⊕ (enter) button**

Use to confirm an item.

**22 ←/↑/↓/→ buttons**

Use to select an item.

**📁 +/- buttons**

Use to select a folder (album) on an MP3/WMA disc or USB device.

**23 TUNER MEMORY button**

Use to preset radio stations (page 13).

**24 TUNER PRESET (1 to 4) buttons**

Use to tune in 4 registered FM stations.

**25 TIMER MENU button**

Use to set the timer menu (page 22).

**26 SLEEP button**

Use to set the sleep timer (page 22).

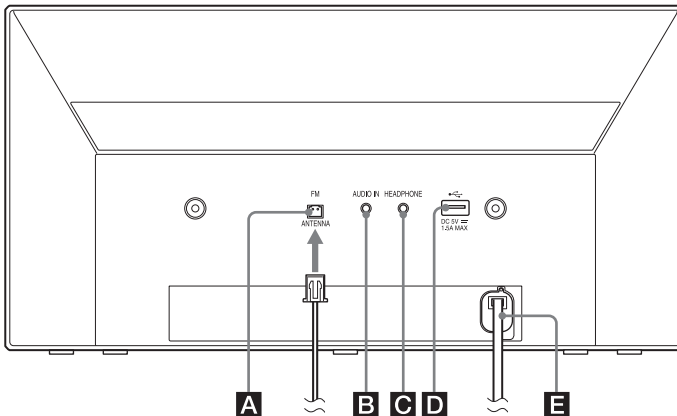
**27 DISPLAY button**

Use to change information displayed in the display window **6**.

An underscore “\_” is displayed in the place of an unrecognizable character.

If you press this button when the power is turned off, the clock time is displayed.

## Unit (back)



**A FM ANTENNA**

Connect the FM antenna.

**Note**

- Find a location and an orientation that provide good reception, and then fix the FM antenna to a stable surface (window, wall, etc.).
- Secure the end of the FM lead antenna with adhesive tape.

**B AUDIO IN (external input) jack**

Connect optional external equipment with an audio connecting cable (not supplied).

**C HEADPHONE jack**

Use to connect headphones.

**D (USB) port**

Use to connect a USB device (page 15).

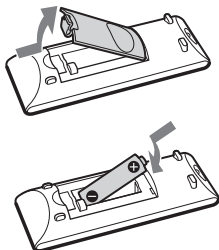
**E ~ AC IN (120-240 V AC) input**

Connect the power cord to the wall outlet.



## Preparing the Remote

Insert an R6 (size AA) battery (not supplied), matching the polarities as shown below.



### Notes on using the remote

- With normal use, the battery should last for about six months.
- If you do not use the remote for a long period of time, remove the battery to avoid damage from battery leakage and corrosion.

## Setting the clock

- 1 Press **I/⏻** **[5]** to turn on the system.
- 2 Press **TIMER MENU** **[25]**.  
If setting the clock for the first time, proceed to step 4.
- 3 Press **▲/▼** **[22]** to select "CLOCK," then press **+** **[21]**.
- 4 Press **▲/▼** **[22]** to set the hour, then press **+** **[21]**.
- 5 Press **▲/▼** **[22]** to set the minutes, then press **+** **[21]**.  
Complete the clock setting.

### Note

- The clock settings are reset when you disconnect the power cord or if a power failure occurs.

### To display the clock when the system is off

Press **DISPLAY** **[27]** to display the clock. The clock is displayed for about 8 seconds.

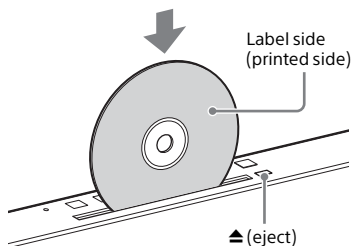
## Listening to a CD

# Playing a CD-DA/ MP3/WMA disc

1 Press CD [1].

2 Insert a CD to the disc slot [9] at the top of the unit.

Load a CD with the label side (printed side) toward you.



3 Press ► [2].

If you switch the function to “CD” from another function when a CD is already inserted in the slot, press ► [2] after “READING” has disappeared from the display window [6].

The button of the remote or the unit enables you to fast-rewind/fast-forward, select a track, file or folder (for MP3/WMA disc), etc.

## To eject the CD

Press ▲ [7] on the unit.

### Tip

- You can lock the disc slot [9]. Press and hold FUNCTION [1] on the unit and VOL - [4] on the unit at the same time for 5 seconds, “LOCKED” appears on the display window [6] and the ▲ [7] button is then inoperable. To unlock the disc slot [9], repeat the same procedure.

### Note

- 8 cm CDs cannot be used with this system.
- Do not load a disc with a non-standard shape (e.g., heart, square, star). Doing so may cause irreparable damage to the system.
- Do not use a disc with tape or stickers on it as this may cause malfunction.
- When you remove a disc, do not touch its surface.

## To change the play mode

Play mode enables you to playback the same music repeatedly or shuffle-play.

1 Press ■ [18] to stop playback.

2 Press PLAY MODE [16] repeatedly to select a play mode.

You can select the following play modes.

| Play mode              | Effect                                                                                                                                                    |
|------------------------|-----------------------------------------------------------------------------------------------------------------------------------------------------------|
| <b>FOLDER*</b>         | Plays all tracks in the selected folder. “FLDR” appears on the display window [6].                                                                        |
| <b>SHUFFLE</b>         | Plays all tracks repeatedly in random order. “SHUF” appears on the display window [6].                                                                    |
| <b>FOLDER SHUFFLE*</b> | Plays all tracks in the selected folder in random order. “FLDRSHUF” appears on the display window [6].                                                    |
| <b>PROGRAM</b>         | Plays the programmed tracks or files. “PROGRAM” appears on the display window [6]. For details, see “Creating your own program (Program Play)” (page 11). |
| <b>OFF</b>             | Plays a track or file.                                                                                                                                    |

\* This play mode is applicable only for playing a USB device or MP3/WMA disc.

## REPEAT

To switch the repeat play mode, press REPEAT **[17]** repeatedly.

You can select the following play modes.

| Play mode      | Effect                                                                                                    |
|----------------|-----------------------------------------------------------------------------------------------------------|
| <b>ONE</b>     | Plays the selected track repeatedly. "REP ONE" appears on the display window <b>[6]</b> .                 |
| <b>FOLDER*</b> | Plays all tracks in the selected folder repeatedly. "REP FLDR" appears on the display window <b>[6]</b> . |
| <b>ALL</b>     | Plays all tracks in a disc repeatedly. "REP ALL" appears on the display window <b>[6]</b> .               |
| <b>OFF</b>     | Cancels repeat playback.                                                                                  |

\* This play mode is applicable only for playing a USB device or MP3/WMA disc.

### When "PLS STOP" appears

You cannot change the play mode during playback. Stop playback, then change the play mode.

#### Note

- Once the power cord is unplugged, the play mode is turned off automatically.

### Note on playing MP3/WMA discs

- Do not save unnecessary folders or files on a disc that has MP3/WMA files.
- Folders that have no MP3/WMA files are not recognized on the system.
- The system can only play MP3/WMA files that have a file extension of ".mp3" or ".wma." Even when file name has the ".mp3" or ".wma" file extension, if it is not an audio MP3/WMA file, playing this file may generate a loud noise, which could cause damage of the system.
- The maximum number of MP3/WMA folders and files compatible with this system is:
  - 256\* folders (including the root folder)
  - 999 files
  - 999 files in a single folder
  - 8 folder levels (in the tree structure of files)

\* This includes folders that have no MP3/WMA or other files. The number of folders that the system can recognize may be less than actual

number of folders, depending on the folder structure.

- Compatibility with all MP3/WMA encoding/writing software, CD-R/RW drive and recording media cannot be guaranteed. Incompatible MP3/WMA discs may produce noise or interrupted audio or may not play at all.

## Creating your own program (Program Play)

Plays the programmed track or file.

- Press **■ [18]** to stop playback.
- Press PLAY MODE **[16]** repeatedly to select "PROGRAM."
- When using an MP3 disc, press **📁 +/- [22]** to select the folder containing the tracks or files that you want to program.
- Press **⏪/⏩ [3]** to select a desired track or file, then press **⊕ [21]**.



Selected track or file number

Total playing time of the selected track or file

Repeat the steps above to program additional tracks or files.

- Press **▶ [2]**.  
Your program of tracks or files starts playback.

**Note**

- For MP3/WMA file, the name or title of selected file appears on the display window [6] first, and total playing time is not displayed.

**To cancel program play**

In step 2, select "OFF" for "PROGRAM."

**To delete a programmed track or file**

Press CLEAR [19] while the play is stopped.

Each time you press the button, the last programmed track or file will be deleted.

When all the programmed tracks or files are deleted, "NO STEP" appears.

**Tip**

- Up to 64 tracks or files can be programmed. If you attempt to program more than 64 tracks or files, "FULL" will be displayed. In this case, delete unnecessary tracks.
- To play the same program again, press ► [2].

**Note**

- When the disc is ejected or the power cord is disconnected after programming, all the programmed tracks and files are deleted.

## Tuning in a radio station

- 1 Press FM [1].
- 2 Press TUNING MODE [16] repeatedly to select "AUTO." Each time you press the button, the mode changes to AUTO, MANUAL or PRESET.
- 3 Press TUNING +/- [3]. The frequency indication in the display window [6] starts changing and stops automatically when a FM stereo broadcast is received (**Auto tuning**).

### Manual tuning

- 1 Press TUNING MODE [16] in FM function repeatedly to select "MANUAL."
- 2 Press repeatedly or hold TUNING +/- [3] to tune-in the desired station.  
Press: Each press turns the frequency up/down by one frequency step.  
Hold: Turns the frequency up/down by several frequency steps until the button is released.

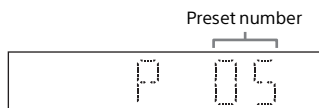
#### Tip

- If reception of an FM stereo broadcast is noisy, press FM MODE [17] repeatedly to select "MONO" to select monaural reception. This reduces noise.
- When you tune to a station that provides RDS services, the station name appears on the display.

## Presetting radio stations

You can preset your desired radio stations.

- 1 Tune in the desired station.
- 2 Press TUNER MEMORY [23].
- 3 Press PRESET +/- [3] repeatedly to select a preset number, then press + [21]. You can also select a preset number by pressing TUNER PRESET (1 to 4) [24] or ◀/▶/↔ [22].



"COMPLETE" appears in the display window [6] and the radio station is registered with the preset number. Repeat the steps above to register further radio stations.

#### Tip

- You can preset up to 20 FM stations.
- If you select an already-registered preset number in step 3, the preset radio station is replaced by the currently tuned-in radio station.

## Selecting a preset radio station

For registered radio stations to a preset number 1 to 4, the radio station will be tuned in by just pressing the TUNER PRESET (1 to 4) **[24]** when the system is in FM function.

For registered radio stations to a preset number 5 or higher, press TUNING MODE **[16]** repeatedly to select "PRESET," then press PRESET +/- **[3]** or **[22]** repeatedly to select the desired preset number.

# Playing a file on a USB device

You can play audio files stored on a USB device such as WALKMAN® or digital media player, on this system by connecting a USB device to the system.

For details on compatible USB devices, see “Compatible USB devices and versions” (page 29).

1 Press USB **[1]**.

2 Connect the USB device to the ⇄ (USB) port **[D]** on the rear of the unit.

Connect the USB device directly, or via the USB cable supplied with the USB device, to the ⇄ (USB) port **[D]**.  
Wait until “SEARCH” disappears.

3 Press ► **[2]**.

Starts playback.

You can operate fast-rewind/fast-forward, selecting a track or file or selecting folder with the remote or the button of the unit.

## Tip

- When playing the USB device, the play mode and the repeat play mode can be selected. Press PLAY MODE **[16]** or REPEAT **[17]** repeatedly to select the desired mode. For details, see “To change the play mode” (page 10).
- If a USB device is connected to the unit, battery charging starts automatically. If the USB device cannot be charged, disconnect and reconnect it. Some USB devices cannot be charged with the system. For details on the charging status of the USB device, see the operating manual of the USB device.

## Note

- The playback order for the system may differ from the playback order of the connected digital music player.
  - Be sure to turn off the system before removing the USB device. Removing the USB device while the system is turned on may corrupt the data on the USB device.
  - When USB cable connection is necessary, connect the USB cable supplied with the USB device to be connected. For details on connection, refer to the operation manual supplied with the USB device to be connected.
  - It may take time before “SEARCH” appears after connecting, depending on the type of USB device connected.
  - Do not connect the USB device through a USB hub.
  - When the USB device is connected, the system reads all the files on the USB device. If there are many folders or files on the USB device, it may take a long time to finish reading the USB device.
  - With some connected USB devices, it may take a long time to transmit signals from the system or to finish reading the USB device.
  - Compatibility with all encoding/writing software cannot be guaranteed. If audio files on the USB device were originally encoded with incompatible software, those files may produce noise or may malfunction.
  - The maximum number of folders and files on the USB device compatible with this system is:
    - 256\* folders (including the root folder)
    - 999 files
    - 999 files in a single folder
    - 8 folder levels (in the tree structure of files)
  - \* This includes folders that have no playable audio files and empty folders. The number of folders that the system can recognize may be less than actual number of folders, depending on the folder structure.
  - The system does not necessarily support all the functions provided in a connected USB device.
  - Folders that have no audio files are not recognized.
  - The audio formats that you can listen to with this system are as follows:
    - MP3: file extension “.mp3”
    - WMA\*\*: file extension “.wma”
- Note that even when file name has the correct file extension, if the actual file differs, the system may produce noise or may malfunction.
- \*\* Files with DRM (Digital Rights Management) copyright protection or files downloaded from an online music store cannot be played on this system. If you try to play one of these files, the system plays the next unprotected audio file.

# Playing back the music of optional audio components

You can play a track of optional audio components connected to the unit.

**Note**

- Beforehand, press the VOLUME - [4] to turn down the volume.

---

**1** Press AUDIO IN [1].

---

**2** Connect its audio connecting cord to the AUDIO IN jack [B] on the rear of the unit and the output terminal of the optional external equipment.

---

**3** Start playback of the connected component.  
Adjust the volume on the connected component during playback.

---

**4** Press VOLUME +/- [4] to adjust the volume.

**Note**

- The system may enter Standby mode automatically if the volume level of the connected component is too low. For details, see "Setting the Automatic Standby function" (page 20).



## Listening to music through a BLUETOOTH connection

# Pairing the system with a BLUETOOTH device and listening to music

You can listen to music from BLUETOOTH device over a wireless connection. Before using the BLUETOOTH function, perform pairing to register your BLUETOOTH device.

### Note

- Place the BLUETOOTH device to be connected within one meter of the system.
- If your BLUETOOTH device is compliant with touch (NFC), skip the next procedure. See "Listening to music by one-touch action (NFC)" (page 19).

## 1 Press BLUETOOTH MENU **[12]**.

If the BLUETOOTH function is selected when the system has no pairing information, the system enters the pairing mode automatically. You can also perform pairing by using a button on the unit. See "To perform the pairing by using a button on the unit" (page 17).

## 2 Press **▲/▼** to select "PAIRING," then press **⊕ [21]**.

The system enters pairing mode. "PAIRING" appears on the display window **[6]** and the **Ⓜ** (BLUETOOTH) indicator **[11]** blinks quickly.

## 3 Search for this system with the BLUETOOTH device.

A list of the devices found may appear on the BLUETOOTH device display.

## 4 Select [SONY:CMT-X3CD] (this system).

If prompted to enter a passkey on the BLUETOOTH device, enter "0000." If this system is not shown in the display window of the device, proceed from step 1 again.

When pairing is completed, the BLUETOOTH connection is established automatically. "BT AUDIO" appears on the display window **[6]** of the system and the **Ⓜ** (BLUETOOTH) indicator **[11]** lights up.

Perform this step within 5 minutes, or the pairing is canceled. If the pairing is canceled, proceed from step 1 again.

## 5 Press **▶ [2]**.

Starts playback.

Depending on the BLUETOOTH device, press **▶ [2]** again. Also, you may have to start up a music player on the BLUETOOTH device.

## 6 Press VOLUME +/- **[4]** to adjust the volume.

If the volume cannot be changed on the system, adjust it on your BLUETOOTH device.

## To perform the pairing by using a button on the unit

### 1 Press FUNCTION **[1]** repeatedly to select "BT AUDIO."

### 2 Press and hold FUNCTION **[1]** until the **Ⓜ** (BLUETOOTH) indicator **[11]** starts to blink fast.

The system enters pairing mode. "PAIRING" appears on the display window **[6]**.

To establish a BLUETOOTH connection, perform the same procedures after step 2 using a remote.

### Tip

- You can perform a pairing operation with another BLUETOOTH device while the BLUETOOTH connection is established with one BLUETOOTH device.

### Note

- The operations described above may not be available for certain BLUETOOTH devices. In addition, the actual operations may differ depending on the connected BLUETOOTH device.
- Once a pairing operation is performed, it does not have to be performed again. In the following cases, however, a pairing operation must be performed again:
  - Pairing information was erased when the BLUETOOTH device was repaired.
  - You attempt to pair the system with more than 8 BLUETOOTH devices.  
This system can pair with up to 8 BLUETOOTH devices. If you pair another BLUETOOTH device after pairing with 8 devices was performed, pairing information of the device that was connected with the system first is overwritten with that of the new device.
  - Pairing registration information of this system is erased from the connected device.
  - If you initialize the system or erase the pairing history with the system, all the pairing information will be erased.
- The sound of this system cannot be sent to a BLUETOOTH speaker.
- “Passkey” may be called “Passcode,” “PIN code,” “PIN number” or “Password,” etc.
- You cannot make a BLUETOOTH connection with another BLUETOOTH device while the BLUETOOTH connection is established with one BLUETOOTH device. Cancel the connection first, and then connect with another device.
- The system supports only Sub Band Codec.

## To cancel the pairing operation with the BLUETOOTH device

Press BLUETOOTH MENU **12**, BLUETOOTH **1** or change the source.

### Tip

- When the system has no pairing information, the pairing operation cannot be canceled.

## To cancel the connection with the BLUETOOTH device

Press BLUETOOTH MENU **12** and **▲/▼ 22** to select “DISCONNECT,” then press **⊕ 21**.

### Tip

- You can also disconnect the BLUETOOTH connection from the BLUETOOTH device.

## To erase the pairing registration information

1 Press BLUETOOTH **1**.

2 Press and hold FUNCTION **1** and **▲ 7** on the unit at the same time until “RESET” appears on the display window **6**.

### Note

- If you have erased the pairing information, you cannot make a BLUETOOTH connection unless pairing is performed again.

## Listening to music through a registered device

After step 1 on “Pairing the system with a BLUETOOTH device and listening to music,” operate the BLUETOOTH device to connect with the system, then press **▶ 2** to start playback.

# Listening to music by one-touch action (NFC)

NFC is a technology for short-range wireless communication between various devices such as a mobile phone and IC tag. Just touch your smartphone/tablet on the system. The system is turned on automatically, and pairing and BLUETOOTH connection are established. Beforehand, turn the NFC settings to on.

**1** Touch your smartphone/tablet on the N-mark **[10]** on the unit. Touch the smartphone/tablet on the unit and maintain contact until the smartphone/tablet vibrates or plays a short sound. Refer to the user's guide of your smartphone/tablet for the part of your smartphone/tablet used as touch contact.

**2** After completing the connection, press **▶ [2]**. Starts playback. To disconnect the established connection, touch your smartphone/tablet on the N-Mark **[10]** on the unit.

## Tip

- Compatible smartphones are those equipped with the NFC function (NFC-compatible smartphones with Android™ 4.1 or later installed). Check the website below for information on compatible devices.  
**<http://support.sony-europe.com/>**
- When you touch an NFC-compliant smartphone/tablet on the unit while another BLUETOOTH device is connected with this system, the BLUETOOTH device is disconnected and the system is connected with the smartphone/tablet.

## Note

- The BLUETOOTH connection may fail if the system is touched with a smartphone/tablet with the NFC function when it is reading a CD or searching a USB device.
- When the system is turned on and starts playback via the BLUETOOTH connection by one-touch action (NFC), the playback sound may not be heard from the beginning of the track. To start playback from the beginning, press **◀◀ [3]**, or make a BLUETOOTH connection after the system turns on.

# Setting the Automatic Standby function

The system enters Standby mode automatically in about 15 minutes when there is no operation or audio signal output (Automatic Standby function). By default, the Automatic Standby function is turned on.

---

**1** Press I/⏻ [5] to turn on the system.

---

**2** Press and hold I/⏻ [5] for more than 3 seconds.

“AUTO STANDBY ON” appears on the display window [6].

To turn off the function, repeat the same procedure. “AUTO STANDBY OFF” appears on the display window [6] and the function turns off.

**Tip**

- When the system enters Standby mode, “STANDBY” appears and blinks 8 times in the display window [6].

**Note**

- The Automatic Standby function is invalid for the tuner function (FM), even when you have enabled it.
- The system may not enter Standby mode automatically in the following cases:
  - while using the FM function
  - while an audio signal is being detected
  - during playback of audio tracks or files
  - while the Play Timer or Sleep Timer is being used
- The system counts down the time (about 15 minutes) again until it enters Standby mode, even when Automatic Standby function is enabled in the following cases:
  - when a USB device is connected in USB function

# Setting the BLUETOOTH Standby mode

When BLUETOOTH Standby mode is enabled, the system enters Wait mode for BLUETOOTH connection even when the system is turned off. This mode is disabled by default.

- 1 Press BLUETOOTH MENU **[12]**.
- 2 Press **▲/▼ [22]** to select "BT: STBY," then press **⊕ [21]**.
- 3 Press **▲/▼ [22]** to select "ON" or "OFF," then press **⊕ [21]**.
- 4 Press **⏻ [5]** to turn off the system.

### Tip

- When this mode is set to "ON," the system turns on automatically and you can listen to music by making a BLUETOOTH connection from a BLUETOOTH device.

### Note

- When the system has no pairing information, this mode is not available. To use this mode, the system needs to be connected to the device and has its pairing information.

# Setting the wireless BLUETOOTH signal ON/OFF

When the unit is turned on, you can control a BLUETOOTH signal. The default setting is ON.

- 1 Turn on the unit.
- 2 Press and hold **▶|| [2]** and **VOL+ [4]** on the unit for 5 seconds.
- 3 After "BT OFF" (wireless BLUETOOTH signal is off) or "BT ON" (wireless BLUETOOTH signal is on) appears, release the button.

### Tip

- When this setting is set to OFF, the BLUETOOTH function is not available.
- If the unit is touched with a smartphone/tablet with NFC function when this setting is off, the system is turned on and this setting changes to ON.
- When this setting is off, the BLUETOOTH Standby mode cannot be set.
- When this setting is off, the unit and BLUETOOTH device cannot be paired.

---

## Adjusting the sound

You can select the desired sound from the various styles and change the effectiveness of the bass sound.

### Selecting the desired sound

Press EQ **[13]** repeatedly to select the desired sound from the following styles:

**"R AND B/HIP HOP," "FLAT," "ROCK,"  
"POP," "JAZZ," "CLASSIC."**

### Change the effectiveness of the bass sound

Press MEGA BASS **[14]**.

Each press switches the feature on ("BASS ON") and off ("BASS OFF").

#### Tip

- The factory setting is "BASS ON."

---

## Using the timers

The system offers Sleep Timer and Play Timer.

#### Note

- The Sleep Timer has priority over the Play Timer.

---

### Setting the Sleep Timer

At the specified time, the system is turned off automatically.

- 
- 1 Press SLEEP **[26]** repeatedly to select the specified time.

You can select from "SLEEP 10" (10 minutes) to "SLEEP 90" (90 minutes) in 10 minute increments, or "AUTO." If you select "AUTO," the system turns off automatically after a CD or USB device playback ends.

#### Tip

- To check the remaining time of Sleep Timer, press SLEEP **[26]** again.
- The Sleep Timer works even if the clock is not set.

### To cancel the Sleep Timer

Select "OFF" in step 1 above.

---

### Setting the Play Timer

You can listen to a CD, USB device or radio at a preset time.

#### Note

- Make sure you have set the clock before setting the timer (page 9).

- 
- 1 Prepare the sound source.

- 
- 2 Press TIMER MENU **[25]**.

- 
- 3** Press  $\blacktriangle/\blacktriangledown$  **[22]** to select "PLAY SET," then press  $\oplus$  **[21]**.  
The start time flashes in the display window **[6]**.

- 
- 4** Press  $\blacktriangle/\blacktriangledown$  **[22]** to select time, then press  $\oplus$  **[21]**.  
Follow the same procedure to set "MINUTE" of the time to start operation, then "HOUR" and "MINUTE" of the time to stop the operation.

- 
- 5** Press  $\blacktriangle/\blacktriangledown$  **[22]** to select the desired sound source, then press  $\oplus$  **[21]**.  
The confirmation display for the Play Timer appears.

- 
- 6** Press  $I/\text{power}$  **[5]** to turn off the system.

**Tip**

- When the sound source is a radio, make sure to tune-in to the radio station before turning off the system (page 13).
- To change the timer setting, perform the procedures from the beginning again.

**Note**

- The system turns on exactly at the time set in Play Timer. When the sound source is a CD, MP3/WMA disc or USB, it may take some time to start playback.
- The Play Timer does not work if the system is already on at the preset time.
- When the sound source for a Play Timer is set to a radio station, the last played frequency is used for a Play Timer. If you change the radio frequency after setting the timer, the radio station setting for the timer will also be changed.

## To check the setting

- 1 Press TIMER MENU **[25]**.
- 2 Press  $\blacktriangle/\blacktriangledown$  **[22]** to select "SELECT," then press  $\oplus$  **[21]**.
- 3 Press  $\blacktriangle/\blacktriangledown$  **[22]** to select "PLAY SEL," then press  $\oplus$  **[21]**.

The timer setting appears in the display window **[6]**.

## To cancel the timer

Select "OFF" in step 3 of "To check the setting" (page 23).

# Troubleshooting

If a problem occurs while operating the system, follow the steps described below before consulting your nearest Sony dealer. If an error message appears, be sure to make a note of the contents for reference.

1 Check to see if the problem is listed in this "Troubleshooting" section.

2 Check the following customer support websites.  
<http://support.sony-europe.com/>

You will find the latest support information and a FAQ at these websites.

3 If, after steps 1 and 2, you still cannot solve the problem, consult your nearest Sony dealer. If the problem persists after doing all of the above, consult your nearest Sony dealer.

When bringing the product in for repairs, be sure to bring in the entire system (main unit and remote). This product is a system product, and the entire system is needed to determine the section requiring repair.

## If "PROTECT" appears on the display window [6]

Immediately unplug the power cord, and check the following items after "PROTECT" disappears.

**Make sure that the + and - speaker cords are not short circuited.**

**Make sure that nothing is blocking the ventilation holes of the system.**

After you have checked these above items and found no problems, reconnect the power cord, and turn on the system. If the issue persists, contact your nearest Sony dealer.

## General

The system does not turn on.

- ➔ Make sure you have connected the power cord to a wall outlet correctly.

The system has entered Standby mode unexpectedly.

- ➔ This is not a malfunction. The system enters Standby mode automatically in about 15 minutes when there is no operation or audio signal output. See "Setting the Automatic Standby function" (page 20).

The clock setting or the Play Timer operation has been canceled unexpectedly.

- ➔ If about a minute elapses with no operation, the clock setting or Play Timer setting is canceled automatically. Perform the operation again from the beginning.

There is no sound.

- ➔ Turn up the volume on the unit.
- ➔ Make sure an external component is connected correctly to the AUDIO IN jack [B] and set the function to AUDIO IN.
- ➔ The specified station may have temporarily stopped broadcast.

Severe hum or noise occurs.

- ➔ Move the system away from sources of noise.
- ➔ Connect the system to a different wall outlet.
- ➔ Use of an AC power tap with a noise filter (not supplied) is recommended.

The remote does not function.

- ➔ Remove any obstacles between the remote and the remote sensor [8] on the unit, and position the unit away from fluorescent lights.
- ➔ Point the remote at the remote sensor [8] on the unit.
- ➔ Move the remote closer to the system.
- ➔ Replace the new batteries.



## CD-DA/MP3/WMA

"LOCKED" appears in the display window [6] and the disc cannot be removed from the disc slot [9].

- ➔ The disc slot lock feature is activated. Turn the feature off (page 10).

The disc or file will not play.

- ➔ The disc has not been finalized (a CD-R or CD-RW disc to which data can be added).

The sound skips, or the disc will not play.

- ➔ The disc may be dirty or scratched. When the disc is dirty, wipe it clean.
- ➔ Move the system to a location away from vibration (for example, on top of a stable stand).

Play does not start from the first track or file.

- ➔ Make sure the current play mode is correct. If the play mode is "SHUFFLE" or "PROGRAM," change the setting (page 10).

Starting playback takes more time than usual.

- ➔ The following discs can increase the time it takes to start playback:
  - a disc recorded with a complicated tree structure
  - a disc recorded in multi-session format
  - a disc that has many folders

## USB device

For details on compatible USB devices, see "Compatible USB devices and versions" (page 29).

An unsupported USB device is connected.

- ➔ The following problems may occur.
  - The USB device is not recognized.
  - File or folder names are not displayed on this system.
  - Playback is not possible.
  - The sound skips.
  - There is noise.
  - A distorted sound is output.

There is no sound.

- ➔ The USB device is not connected correctly. Turn off the system, and then reconnect the USB device.

There is noise, skipping, or distorted sound.

- ➔ An unsupported USB device is connected. Connect a supported USB device.
- ➔ Turn off the system, then reconnect the USB device and turn on the system.
- ➔ The music data itself contains noise, or the sound is distorted. Noise may have been entered when creating music data due to the conditions of the computer. In this case, delete the file and send the music data again.
- ➔ The bit rate used when encoding the files was low. Send files encoded with higher bit rates to the USB device.

"SEARCH" is displayed for an extended time, or it takes a long time before playback starts.

- ➔ The reading process may take a long time in the following cases.
  - There are many folders or files on the USB device.
  - The file structure is extremely complex.
  - Not enough free space in the memory.
  - The internal memory is fragmented.

The file or folder name (album name) is not displayed correctly.

- ➔ Send the music data to the USB device again, as the data stored in the USB device may have been corrupted.
- ➔ The character code that can be displayed by this system are as follows:
  - Upper cases (A to Z).
  - Numbers (0 to 9).
  - Symbols (< > +, [ ] \ \_).Other characters appear as " \_."

The USB device is not recognized.

- ➔ Turn off the system and reconnect the USB device, then turn on the system.
- ➔ An incompatible USB device may be connected.
- ➔ The USB device does not work properly. Refer to the operating manual supplied with the USB device for how to deal with this problem.

---

### Play does not start.

---

- ➔ Turn off the system and reconnect the USB device, then turn on the system.
- ➔ An incompatible USB device may be connected.

---

### Play does not start from the first track.

---

- ➔ Make sure the current play mode is correct. If the play mode is "SHUFFLE" or "PROGRAM," change the setting (page 10).

---

### The USB device cannot be charged.

---

- ➔ Make sure the USB device is connected securely to the ← (USB) port **D**.
- ➔ The USB device may not be supported by this system.
- ➔ Disconnect the USB device and then reconnect it. For details on the charging status of the USB device, see the operating manual of the USB device.

## Tuner

---

Severe hum or noise occurs ("STEREO" flashes in the display window **6**), or broadcasts cannot be received.

---

- ➔ Connect the antenna properly.
- ➔ Find a location and an orientation that provide good reception, and then set up the antenna again.
- ➔ Keep the antennas away from the unit or other AV components to avoid picking up noise.
- ➔ Turn off nearby electrical equipment.

---

Several radio stations can be heard at the same time.

---

- ➔ Find a location and an orientation that provide good reception, and then set up the antenna again.
- ➔ Bundle the antenna cables using commercially available cord clips and adjust the cable lengths.

## To reset the system to factory settings

If the system still does not operate properly, reset the system to factory settings.

- 1 Turn on the system.

- 2 Press and hold FUNCTION **1** and **7** on the unit at the same time until "RESET" appears on the display window **6**.

All user-configured settings, such as preset radio stations, timer, and the clock, are deleted. If the problem persists after doing all of the above, consult your nearest Sony dealer.

### Note

- If you dispose of the unit or give it to another person, reset the unit for security.

---

# Messages

The following messages may appear or flash during operation.

**DISC ERR**

You have set a disc that cannot be played back on this system, such as CD-ROM, or tried to play an unplayable file.

**COMPLETE**

The station preset operation ended normally.

**FULL**

You tried to program more than 64 tracks or files.

**LOCKED**

The disc slot lock feature is activated.

**NO USB**

No USB device is connected, the connected USB device has been removed, or the system does not support the USB device.

**NO DISC**

There is no disc in the player, or you have set a disc that cannot be loaded.

**NO STEP**

There is no steps have been registered or all of the programmed tracks have been erased.

**NO FILE**

There are not playable files on the USB device or disc.

**OVER CURRENT**

The system detects an overcurrent in a connected USB device. Remove the USB device from the port and turn off the system then turn on the system.

**PLS STOP**

You attempted to change the play mode during playback in the CD or USB function.

**READING**

The system is reading the information on the CD. Some buttons do not work during reading.

**SEARCH**

The system is searching the information on the USB device. Some buttons do not work during searching.

**TIMING**

The Play Timer start and end times are set to the same time.

# Precautions

### Discs that this system CAN play

- Audio CD-DA discs
- CD-R/CD-RW (audio data of CD-DA tracks and MP3/WMA files)

Do not use a CD-R/CD-RW disc with no data stored. Doing so may damage the disc.

### Discs that this system CANNOT play

- CD-ROM
- CD-R/CD-RW other than those recorded in music CD format or MP3/WMA format conforming to ISO9660 Level 1/Level 2, Joliet
- CD-R/CD-RW recorded in multi-session format and not closed the session
- CD-R/CD-RW of poor recording quality, CD-R/CD-RW that have scratches or are dirty, or CD-R/CD-RW recorded with an incompatible recording device
- CD-R/CD-RW which is finalized incorrectly
- CD-R/CD-RW containing files other than MPEG 1 Audio Layer-3 (MP3/WMA) files
- 8 cm disc
- Discs of non-standard shape (for example, heart, square, star)
- Discs that have adhesive tape, paper, or sticker attached to them
- Rental or used discs with attached seals where the glue extends beyond the seal
- Discs that have labels printed using ink that feels tacky when touched

### Note on CD-DA/MP3/WMA discs

- Before playing, wipe the disc with a cleaning cloth from the center out to the edge.
- Do not clean discs with solvents, such as benzene, thinner, or commercially available cleaners or antistatic spray intended for vinyl LPs.
- Do not expose discs to direct sunlight or heat sources such as hot air ducts, nor leave it in a car parked in direct sunlight.

### On safety

- Completely disconnect the power cord (mains lead) from the wall outlet (mains) if it is not going to be used for an extended period of time. When unplugging the system, always grip the plug. Never pull the cord itself.
- Should any solid object or liquid get into the system, unplug the system, and have it checked by qualified personnel before operating it again.
- The AC power cord can be changed only by a qualified service facility.

### On placement

- Do not place the system in an inclined position or in locations that are extremely hot, cold, dusty, dirty, or humid or lacking adequate ventilation, or subject to vibration, direct sunlight or a bright light.
- Be careful when placing the system on surfaces that have been specially treated (for example, with wax, oil, polish) as staining or discoloration of the surface may result.
- Do not place heavy objects on the system.
- If the system is brought directly from a cold to a warm location or is placed in a very damp room, moisture may condense on the lens inside the system, and cause the system to malfunction. In this situation, remove the disc, and leave the system turned on for about an hour until the moisture evaporates. If the system still does not operate, even after an extended period, consult your nearest Sony dealer.

### On heat buildup

- Heat buildup on the unit during charging or operation over a long period of time is normal and not cause for alarm.
- Do not touch the cabinet if it has been used continuously at a high volume because the cabinet may have become hot.
- Do not obstruct the ventilation holes.

### Cleaning the cabinet

Clean this system with a soft cloth slightly moistened with a mild detergent solution. Do not use any type of abrasive pads, scouring powder, or solvents, such as thinner, benzene, or alcohol.

### On moving the system

Before moving the system, make sure that there is no disc loaded, and remove the power cord from the wall outlet.

### On handling discs

- To keep the disc clean, handle the disc by its edge. Do not touch the surface.
- Do not attach paper or tape to the disc.
- Do not expose discs to direct sunlight or heat sources such as hot air ducts, or leave them in a car parked in direct sunlight, as the temperature may rise considerably inside the car.

---

## Compatible USB devices and versions

Check the websites below for details on the latest supported versions of the compatible devices:

<http://support.sony-europe.com/>

# BLUETOOTH wireless technology

BLUETOOTH wireless technology is a short-range wireless technology linking digital devices, such as personal computers and digital still cameras. Using the BLUETOOTH wireless technology, you can operate the units involved within a range of about 10 meters.

The BLUETOOTH wireless technology is commonly used between two devices, but a single device can be connected to multiple devices.

You do not need wires to get connected as you do with a USB connection, and you do not need to place the devices face to face as you do with wireless infrared technology. You can use the technology with one BLUETOOTH device in your bag or pocket. BLUETOOTH wireless technology is a global standard supported by thousands of companies. These companies produce products that meet the global standard.

## Supported BLUETOOTH version and profiles

Profile refers to a standard set of capabilities for various BLUETOOTH product capabilities. See "Specifications" (page 31) for details on the supported BLUETOOTH version and profiles.

### Note

- To use a BLUETOOTH device connected to this system, the device must support the same profile as this system. Note that the functions of the BLUETOOTH device may be different depending on the specifications of the device, even if it has the same profile as this system.
- Because of the properties of BLUETOOTH wireless technology, playback on this system is slightly delayed compared with audio playback on the transmitting device.

## Effective communication range

BLUETOOTH devices should be used within approximately 10 meters (unobstructed distance) of each other.

The effective communication range may become shorter under the following conditions.

- When a person, metal object, wall or other obstruction is between the devices with a BLUETOOTH connection
- Locations where a wireless LAN is installed
- Around microwave ovens that are in use
- Locations where other electromagnetic waves occur

## Effects of other devices

BLUETOOTH devices and wireless LAN (IEEE802.11b/g) use the same frequency band (2.4 GHz). When using your BLUETOOTH device near a device with wireless LAN capability, electromagnetic interference may occur.

This could result in lower data transfer rates, noise, or inability to connect. If this happens, try the following remedies:

- Try connecting this system and BLUETOOTH mobile phone or BLUETOOTH device when you are at least 10 meters away from the wireless LAN equipment.
- Turn off the power to the wireless LAN equipment when using your BLUETOOTH device within 10 meters

## Effects on other devices

The radio waves broadcast by this system may interfere with the operation of some medical devices. Since this interference may result in malfunction, always turn off the power on this system, BLUETOOTH mobile phone and BLUETOOTH device in the following locations:

- In hospitals, on trains, and in airplanes
- Near automatic doors or fire alarms

### Note

- This system supports security functions that comply with the BLUETOOTH specification as a means of ensuring security during communication using BLUETOOTH technology. However, this security may be insufficient depending on the setting contents and other factors, so always be careful when performing communication using BLUETOOTH technology.
- Sony cannot be held liable in any way for damages or other loss resulting from information leaks during communication using BLUETOOTH technology.
- BLUETOOTH communication is not necessarily guaranteed with all BLUETOOTH devices that have the same profile as this system.

- BLUETOOTH devices connected with this system must comply with the BLUETOOTH specification prescribed by the BLUETOOTH SIG, Inc., and must be certified to comply. However, even when a device complies with the BLUETOOTH specification, there may be cases where the characteristics or specifications of the BLUETOOTH device make it impossible to connect, or may result in different control methods, display or operation.
- Noise may occur or the audio may cut off depending on the BLUETOOTH device connected with this system, the communications environment, or surrounding conditions.

---

# Specifications

---

## Amplifier section

**Power output (rated):**

8 watts + 8 watts (at 8 ohms, 1 kHz, 1% THD)

**RMS power output (reference):**

10 watts + 10 watts (per channel at 8 ohms, 1 kHz)

---

## Inputs/Outputs

**AUDIO IN:**

AUDIO IN (external input) jack:

Stereo mini jack, sensitivity 1 V, impedance 47 kilohms

**USB:**

USB port: Type A, 5 V DC 1.5 A

**HEADPHONE jack:**

Stereo standard jack, 8 ohms or more

---

## CD-DA/MP3/WMA player section

**System:**

Compact disc and digital audio system

**Laser Diode Properties:**

Emission Duration: Continuous

Laser Output\*: Less than 44.6  $\mu$ W

\* This output is the value measurement at a distance of 200mm from the objective lens surface on the Optical Pick-up Block with 7mm aperture.

**Frequency response:**

20 Hz - 20 kHz

**Signal-to-noise ratio:**

More than 90 dB

**Dynamic range:**

More than 90 dB

---

## Tuner section

**FM tuner section:**

FM stereo, FM superheterodyne tuner

Tuning range:

87.5 MHz - 108.0 MHz (50 kHz step)

Antenna:  
FM lead antenna  
Antenna terminals:  
8 ohms unbalanced

---

## Speaker section

**Speaker system:**  
Full-range speaker  
Passive radiator

**Rated impedance:**  
8 ohms

---

## BLUETOOTH section

**Communication system:**  
BLUETOOTH Standard version 4.0

**Output:**  
BLUETOOTH Standard Power Class 2

**Maximum output power:**  
10 dBm

**Maximum communication range:**  
Line of sight approx. 10 m<sup>\*1</sup>

**Frequency band:**  
2.4 GHz band (2.4000 GHz - 2.4835 GHz)

**Modulation method:**  
FHSS

**Compatible BLUETOOTH profiles<sup>\*2</sup>:**  
A2DP (Advanced Audio Distribution Profile)  
AVRCP (Audio Video Remote Control Profile)

**Supported content protection method**  
SCMS-T method

**Supported codec**  
SBC (Sub Band Codec)

**Transmission bandwidth**  
20 Hz - 20,000 Hz (with 44.1 kHz sampling)

<sup>\*1</sup> The actual range will vary depending on factors such as obstacles between devices, magnetic fields around a microwave oven, static electricity, reception sensitivity, antenna's performance, operating system, software application, etc.

<sup>\*2</sup> BLUETOOTH standard profiles indicate the purpose of BLUETOOTH communication between devices.

---

## NFC section

**Operating frequency:**  
13.56 MHz

---

## General

**Power requirements:**  
AC 120 V - 240 V, 50 Hz/60 Hz

**Power consumption:**  
28 watts

**Dimensions (W/H/D) (incl. projecting parts):**  
Approx. 340 mm × 173 mm × 90 mm

**Mass:**  
Approx. 2.3 kg

**Supplied accessories:**  
Remote (RM-AMU212) (1), FM lead antenna (1), Operating Instructions (this manual) (1), Warranty Card (1)

Design and specifications are subject to change without notice.

|                                                                                                                                 |
|---------------------------------------------------------------------------------------------------------------------------------|
| Standby power consumption: 0.5 W<br>(BLUETOOTH network ports off)<br>BLUETOOTH Standby mode: 0.5 W (BLUETOOTH network ports on) |
|---------------------------------------------------------------------------------------------------------------------------------|



## Trademarks, etc.

- Windows Media is either a registered trademark or trademark of Microsoft Corporation in the United States and/or other countries.
- This product is protected by certain intellectual property rights of Microsoft Corporation. Use or distribution of such technology outside of this product is prohibited without a license from Microsoft or an authorized Microsoft subsidiary.
- MPEG Layer-3 audio coding technology and patents licensed from Fraunhofer IIS and Thomson.
- "WALKMAN" and "WALKMAN" logo are registered trademarks of Sony Corporation.
- The BLUETOOTH® word mark and logos are registered trademarks owned by BLUETOOTH SIG, Inc. and any use of such marks by Sony Corporation is under license.
- The N Mark is a trademark or registered trademark of NFC Forum, Inc. in the United States and in other countries.
- The system names and product names indicated in this manual are generally the trademarks or registered trademarks of the manufacturer. ™ and ® marks are omitted in this manual.





<https://www.sony.net/>

