

DIGITAL RADIO DAB/FM with Bluetooth SPEAKER

Operating Instructions

DAB DAB+ DRS

Bluetooth



©2016 Sony Corporation Printed in China

https://www.sony.net/

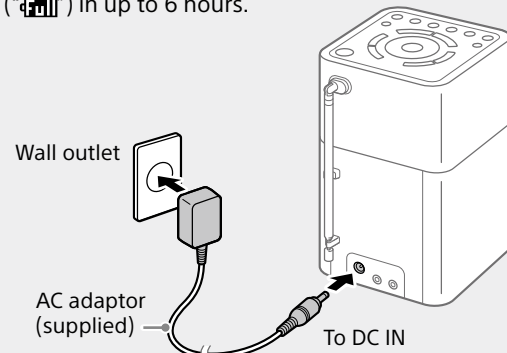
XDR-VIBTD

Getting Started

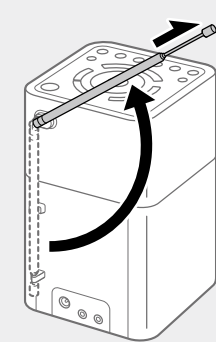
When using the unit for the first time, make sure to connect the unit to a wall outlet using the AC adaptor (supplied). Otherwise the unit will not turn on.

1 Connect the unit to a wall outlet and charge the unit.

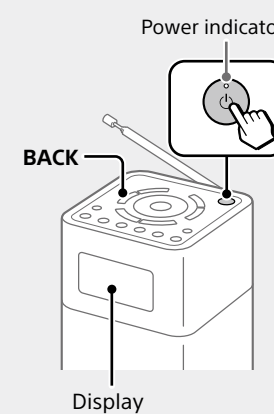
The built-in battery will be fully charged (100%) in up to 6 hours.



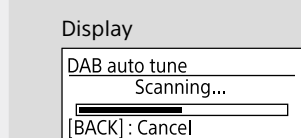
2 Extend the antenna.



3 Turn on the unit.



If it is the first time the unit is turned on, DAB auto tune is performed automatically.



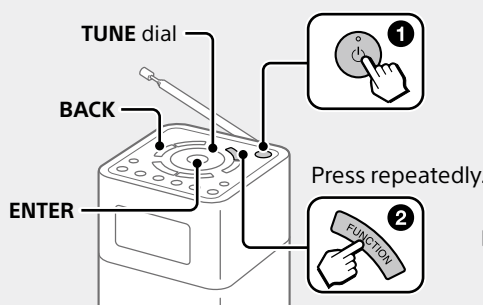
After auto tune is completed, the unit receives the first station in the DAB station list.

Tips

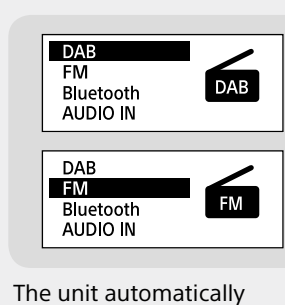
- The power indicator lights up in green while the unit is turned on. To set the unit to standby mode, press **OFF** again.
- To cancel the auto tune process while in progress, press **BACK**.
- To perform auto tune again later, see "To make a new station list" below.

Listening to the Radio

1 Turn on the unit, and select the "DAB" or "FM" function.

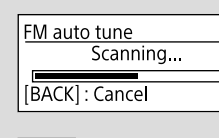


Tip After pressing FUNCTION once, you can also select a function by turning the TUNE dial and pressing ENTER.



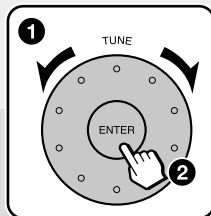
The unit automatically switches to the selected function in about 2 seconds.

If it is the first time the "FM" function is selected, FM auto tune is performed automatically.



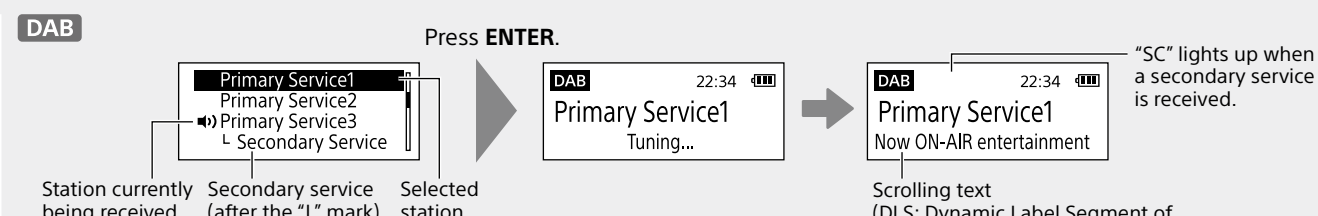
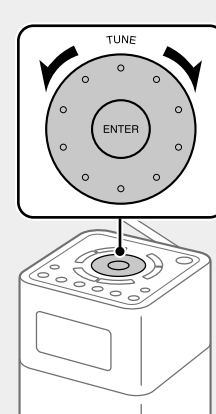
To cancel the auto tune process while in progress, press **BACK**.

- To perform auto tune again later, see "To make a new station list" below.
- It may take a long time to receive FM station names. To perform this process later, see "Setting Menu Options."
- FM station names will be received and stored in the unit while you are listening to the broadcasts, even if you have not received them during the auto tune process.
- FM station names may not be transmitted, depending on the station.

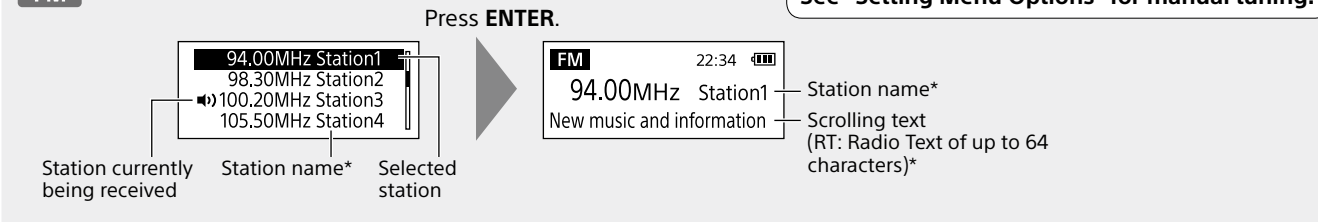


1 Turn the TUNE dial to select "Now" or "Later."  
2 Press ENTER.

2 Select a desired station or service.



Station currently being received: Primary Service2, Primary Service3, Secondary Service. Selected station: Primary Service1. Station name: Primary Service1. Scrolling text (RT: Radio Text of up to 128 characters): Now ON-AIR entertainment.

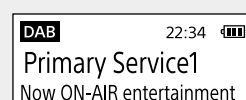


Station currently being received: 98.50MHz Station2, 100.20MHz Station3, 105.50MHz Station4. Station name: 94.00MHz Station1. Scrolling text (RT: Radio Text of up to 64 characters): New music and information.

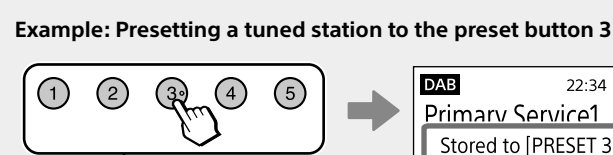
Presetting stations (5 DAB and 5 FM)

1 Tune to the station you want to preset.

Follow the steps in "Listening to the Radio" above.



2 Press and hold the desired preset button (1-5) until "Stored to [PRESET x]." appears on the display.



- If you try to store another station with the same preset number, the previously stored station will be replaced.
- The preset stations remain in the unit's memory even after an auto tune is performed.
- The preset button 3 on the unit has a tactile dot. Use the tactile dot as a reference when operating the unit.

Listening to a preset station

1 Select the "DAB" or "FM" function.

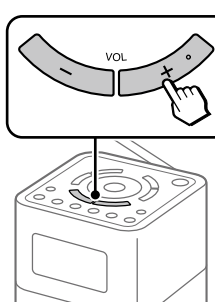


2 Select the desired preset station.



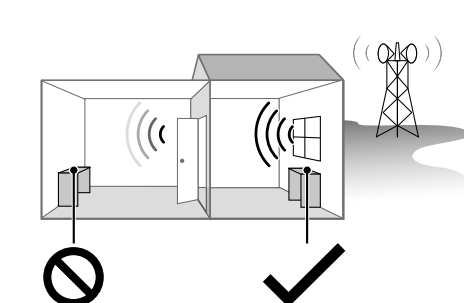
Note To prevent the preset from being changed by mistake, do not hold down the preset button.

To adjust the volume



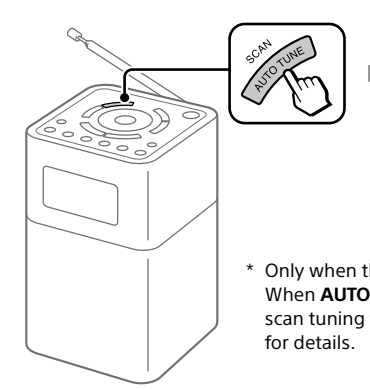
- The last set volume is stored in the unit's memory.
- VOL+ on the unit has a tactile dot. Use the tactile dot as a reference when operating the unit.

To improve DAB/FM radio reception

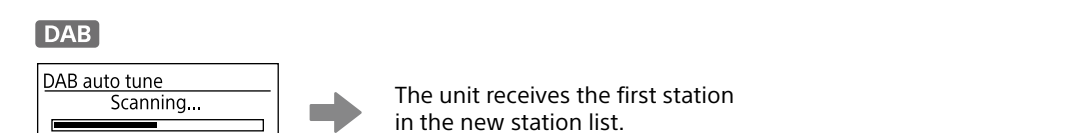


To make a new station list

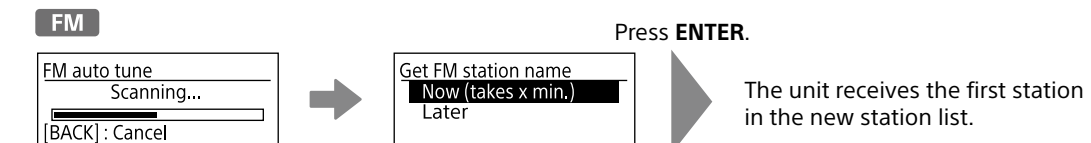
If you have moved to another region, perform the auto tune again. Select the "DAB" or "FM" function, then press **AUTO TUNE**.



\* Only when the tuning mode is set to "By station list." When **AUTO TUNE** is pressed in "Manual tune" mode, scan tuning will start instead. See "Setting Menu Options" for details.



The unit receives the first station in the new station list.



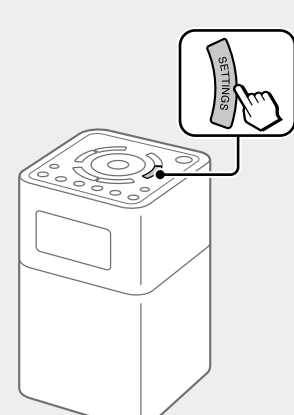
The unit receives the first station in the new station list.

- The currently stored station list will be cleared once the auto tune process has started.
- When the setting menu is displayed, auto tune is not performed even when **AUTO TUNE** is pressed.

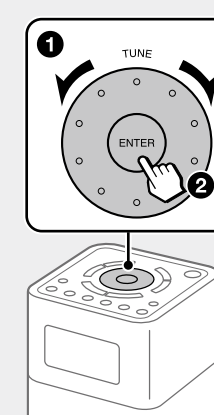
Setting the On Timer

You can set the unit to turn on the radio automatically at the set time.

1 Press **SETTINGS**.

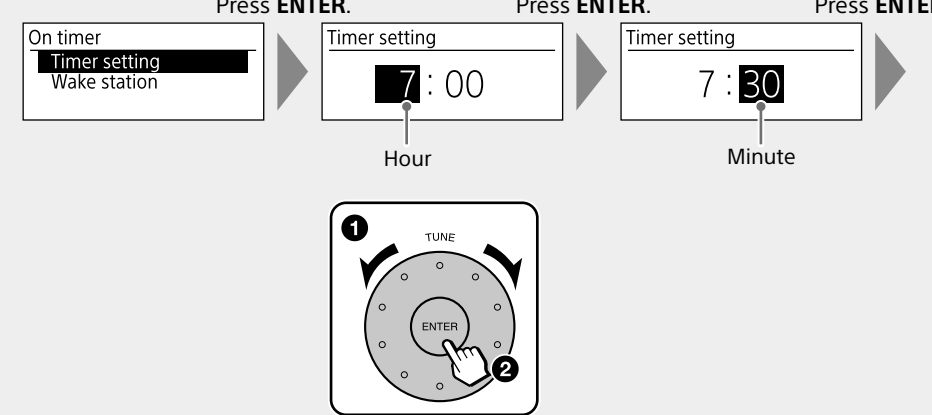


2 Select "On timer."

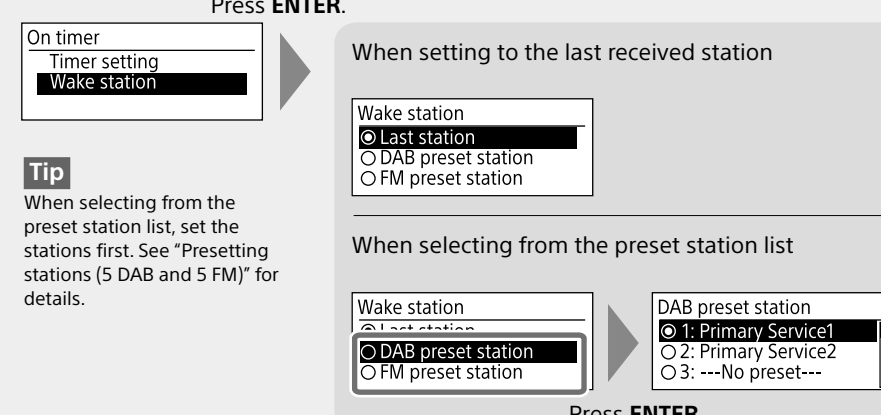


When setting in standby mode: Settings, On timer, Time, Auto power off. 1 Turn the TUNE dial to select an option. 2 Press ENTER. Perform the same procedure for the following steps.

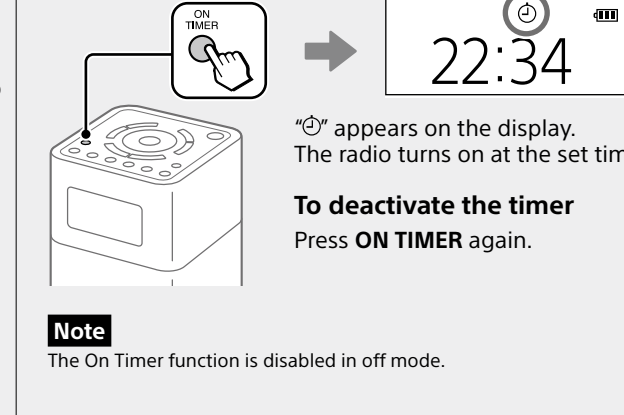
3 Set the hour and minute.



4 Set the station received at the set time.



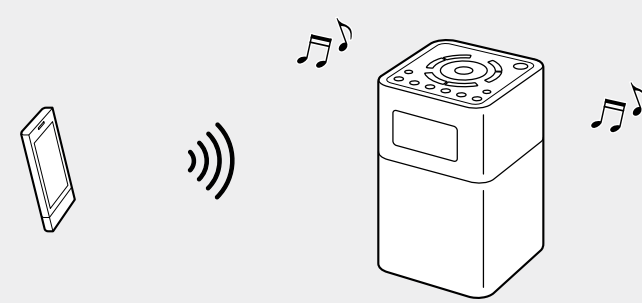
5 Activate the timer.



To deactivate the timer Press **ON TIMER** again.

Listening to Music from a BLUETOOTH Device

Using the BLUETOOTH connection, you can listen to music from wirelessly connected BLUETOOTH devices such as smartphones, tablets, PCs, etc.



Tip BLUETOOTH wireless technology operates within a range of about 10 m.

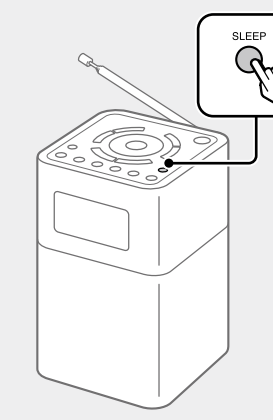
Compatible BLUETOOTH devices

- Compatibility requirements for the devices are as follows. Before using a device with this unit, check that it meets the requirements.
- Devices must support A2DP (Advanced Audio Distribution Profile) and AVRCP (Audio/Video Remote Control Profile).
- NFC capability (required only when using the NFC pairing function of the unit).

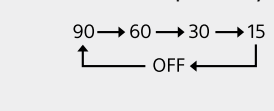
About the BLUETOOTH standby mode

The BLUETOOTH standby mode enables the unit to turn on automatically by making a BLUETOOTH connection from a BLUETOOTH device. See "Setting Menu Options" for details.

Setting the Sleep Timer



Press **SLEEP** repeatedly to select the desired time (in minutes).

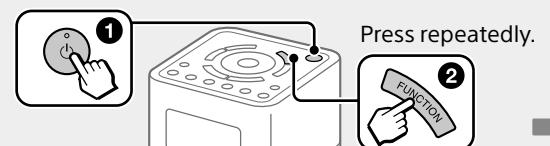


- The last set time is stored in the unit's memory.
- You can check the time left until the unit enters standby mode by pressing **SLEEP** again after setting the sleep timer.

Connecting with a BLUETOOTH device

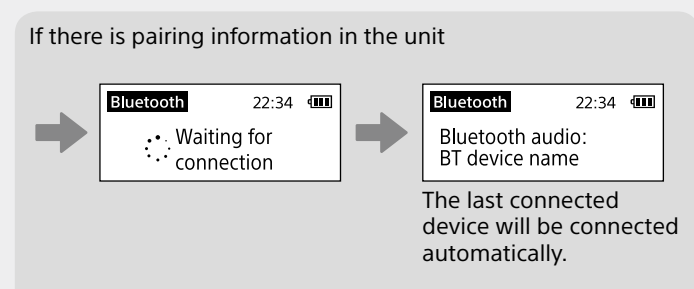
If your BLUETOOTH device has an NFC function, this procedure is unnecessary. See "Connecting by One-touch (NFC)" below.

1 Turn on the unit, and select the "Bluetooth" function.

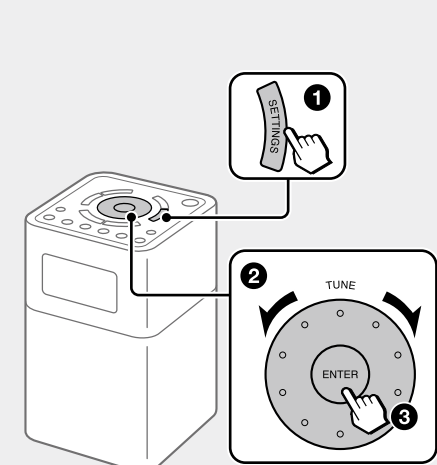


When using the unit for the first time (if there is no pairing information in the unit) The unit will automatically switch to pairing mode. In this case, proceed to step 3.

When connecting with the second and subsequent devices Proceed to step 2.

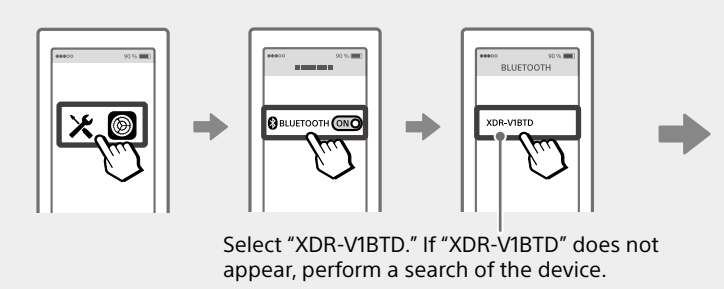


2 Select "Bluetooth pairing."



Settings: Bluetooth pairing, Bluetooth standby, On timer. 1 Press SETTINGS. 2 Turn the TUNE dial to select an option. 3 Press ENTER. "Waiting for pairing" appears on the display.

3 On the BLUETOOTH device, activate the BLUETOOTH function and perform the pairing procedure.



To terminate the BLUETOOTH connection Select the function other than the BLUETOOTH function.

Connecting by One-touch (NFC)

Compatible smartphones

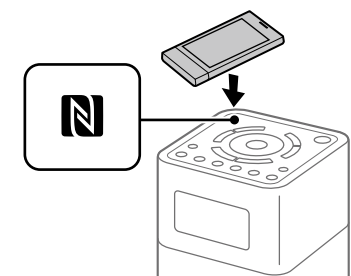
NFC-compatible smartphones with Android™ 4.1 or later installed

NFC (Near Field Communication) is a technology enabling short-range wireless communication between various devices, such as smartphones and IC tags. Thanks to the NFC function, data communication - for example, BLUETOOTH pairing - can be achieved easily by simply touching NFC-compatible devices together (i.e., at the N-Mark symbol or location designated on each device).

1 Turn on the NFC function of the BLUETOOTH device.



2 Touch the BLUETOOTH device to the N-Mark on the unit.

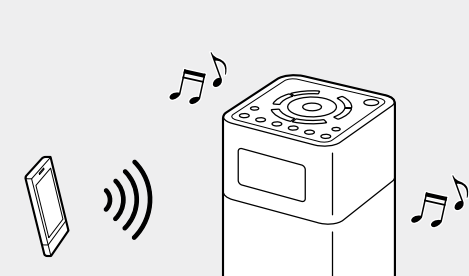


Bluetooth audio: BT device name. When pairing is completed, the BLUETOOTH device's name will appear on the display.

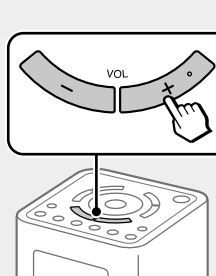
To terminate the BLUETOOTH connection Touch the BLUETOOTH device to the N-Mark on the unit.

Listening to music

1 Start playback on the BLUETOOTH device.



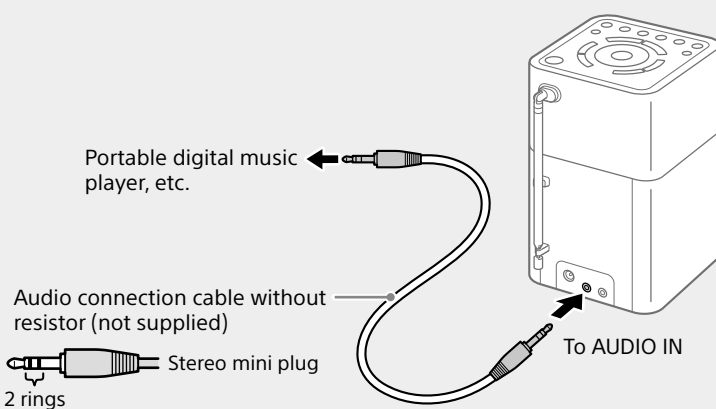
2 Adjust the volume.



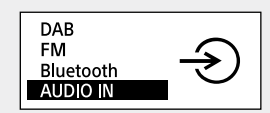
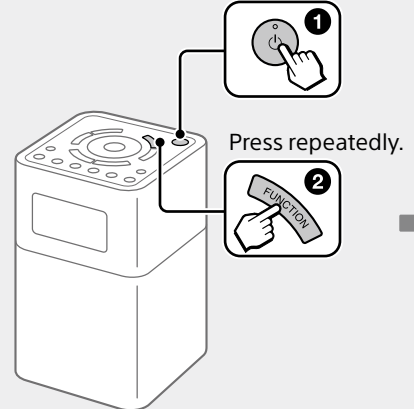


# Listening to Music from an External Device

**1** Connect the external device to the unit.

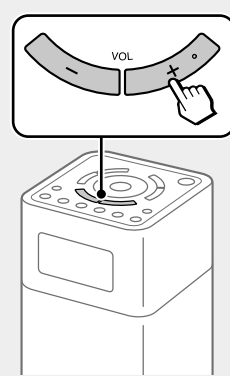


**2** Turn on the unit, and select the "AUDIO IN" function.

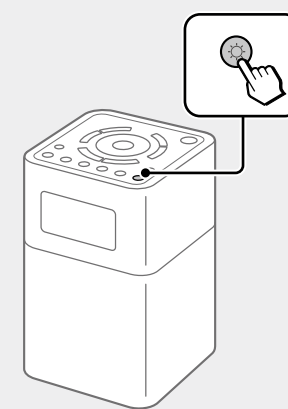


The unit automatically switches to the selected function in about 2 seconds.

**3** Start playback on the connected device and adjust the volume.



# Setting the Brightness of the Display



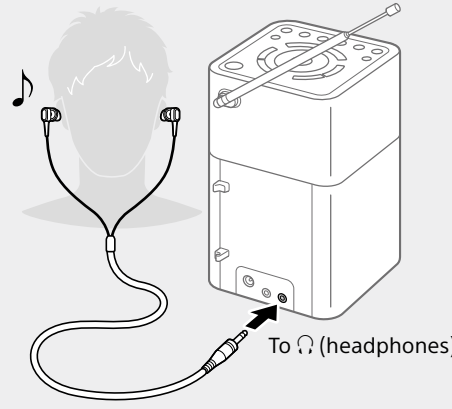
Press  $\odot$  repeatedly to select the desired brightness.

High (default) → Middle → Low  
 ← Off →

**Note**  
 When the unit is powered by the built-in battery, the backlight of the display turns off in about half a minute after operation.

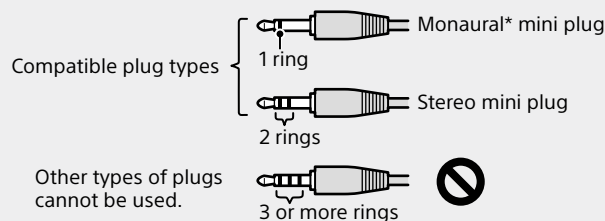
# Listening through Headphones

Connect headphones that have a stereo or monaural\* mini plug (not supplied).



**Note**

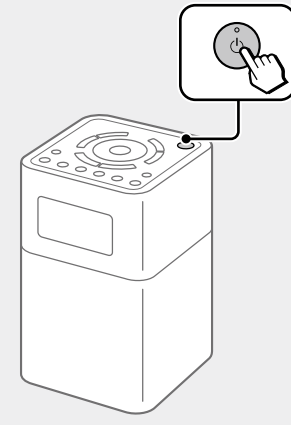
Use headphones with a stereo (3-pole) or monaural (2-pole) mini plug. No sound is heard when using other types of plugs.



\* When listening to stereo sound using monaural headphones, you will hear sound from the left channel only.

# Setting to Off Mode

You can set the unit to off mode to reduce the power consumption if you do not use the unit.



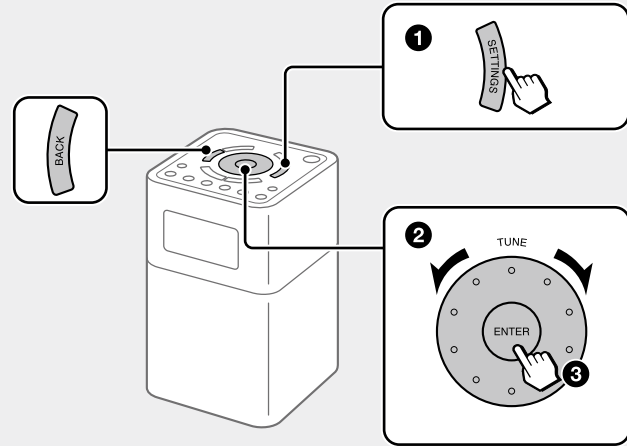
Press and hold  $\odot$  for about 2 seconds to set to off mode. The display turns off.

**Note**  
 The On Timer function is disabled in off mode.

**Tip**  
 When pressing  $\odot$  while the unit is turned on, the unit enters standby mode. In standby mode, the backlight of the display can be turned on if desired and the On Timer function is enabled.

# Setting Menu Options

## Basic Operations:



**To go back to the upper menu level**  
 Press BACK.

**To exit the setting menu**  
 Press SETTINGS again.

## Radio options

Radio options can be set when the "DAB" or "FM" function is selected.

### Information [DAB] [FM]

**DAB**  
 Displays various information of the station you are listening to.

**Channel:** Channel and frequency (See the DAB frequency table in "Specifications.")

**Multiplex name:** Ensemble label (up to 16 characters long)

**Service name:** Station name

**PTY:** PTY label (See "PTY (programme type)" in "Specifications.")

**Bit rate:** Bit rate

**Signal level:** Displays the signal level of the DAB station you are listening to, ranging from 0 (no signal) to 100 (maximum signal).

**FM**  
 Displays PTY label for the station you are listening to. (See "PTY (programme type)" in "Specifications.")

**Note**  
 If there is no ensemble label or no station name, the space for label or name will be blank. If there is no PTY label, "No PTY" appears on the display.

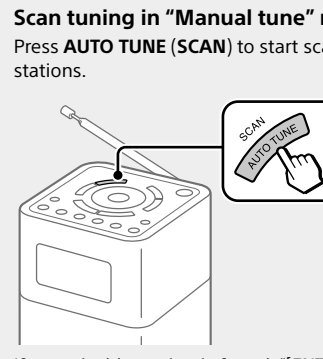
### FM tune mode [FM]

Select the tuning mode for FM.

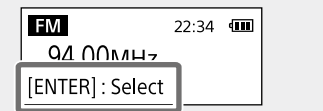
**By station list:** You can select a desired station from the list of FM stations stored by auto tune.

**Manual tune:** You can manually tune to the desired FM frequency in 0.05 MHz steps. Turn the TUNE dial to select the frequency.

**Scan tuning in "Manual tune" mode**  
 Press AUTO TUNE (SCAN) to start scanning FM stations.



If a receivable station is found, [ENTER]:Select appears on the display. Press ENTER to receive the station. (If you do not press ENTER within 3 seconds, the search will restart.)



**Tip**  
 To change the scanning direction, turn the TUNE dial clockwise or counterclockwise.

### Edit FM station list [FM]

You can edit the FM station list.

**Get FM station name:** Perform this when you want to receive RDS information such as station names. Select "OK" to start scanning for RDS data.

**Notes**

- Set "FM tune mode" to "By station list" before you perform this operation.
- The currently stored RDS information will be cleared once scanning has started.
- It may take a long time to receive all the available RDS data.

**Delete FM station:** You can delete any unwanted stations from the FM station list.

- 1 Turn the TUNE dial to select the station you want to delete, then press ENTER.
- 2 Turn the TUNE dial to select "OK," then press ENTER.

**Add FM station:** When listening to a manually tuned station, you can add the station to the FM station list. Select "OK" to add the station to the list.

## BLUETOOTH options

BLUETOOTH options can be set when the "Bluetooth" function is selected.

### Bluetooth pairing

See "Connecting with a BLUETOOTH device."

### Bluetooth standby

When the BLUETOOTH standby mode is set to "On," the unit enters waiting mode for a BLUETOOTH connection even when the unit is in standby mode. When making a BLUETOOTH connection from a BLUETOOTH device, the unit turns on automatically.

### Tips

- Set the BLUETOOTH standby mode to "Off" to reduce the power consumption when the unit is in standby mode.
- The power indicator lights up in amber while the unit is in standby mode, and when the BLUETOOTH standby mode is turned on.

**Note**  
 If the AC adaptor is unplugged, the BLUETOOTH standby mode is disabled.

## Other options

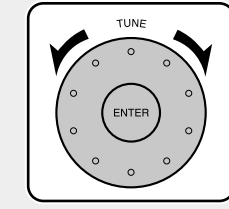
### On timer

See "Setting the On Timer."

### Sound

You can adjust the sound level. **Treble:** Adjusts the level of high-pitched sound.

**Bass:** Adjusts the level of low-pitched sound.



### Time

**Set time:** "Auto (DAB)" is set by default. This enables the clock to synchronize with the DAB data being received. Select "Time setting" to set the clock manually.

**12H/24H:** Select the clock display mode, 12-hour clock or 24-hour clock.

**Note**  
 The clock will be reset if the AC adaptor is unplugged and the built-in battery is completely exhausted.

### Beep

Select "On" to activate the beep sound when you operate the unit.

### Auto power off

When "Auto power off" is set to "Enable (15min)," the unit enters standby mode automatically in about 15 minutes if there is no operation or audio signal output.

### Initialize

Select "Initialize" to initialize the unit to the factory default settings. All settings, such as radio station lists, preset radio stations and the pairing registration information, will be deleted.

## WARNING

Hereby, Sony Corporation declares that this equipment is in compliance with Directive 2014/53/EU. The full text of the EU declaration of conformity is available at the following internet address: <http://www.compliance.sony.de/>

Do not expose the appliance to naked flame sources (for example, lighted candles).

Excessive sound pressure from earphones and headphones can cause hearing loss.

Do not dismantle, open or shred secondary cells or batteries.

In the event of a cell leaking, do not allow the liquid to come in contact with the skin or eyes. If contact has been made, wash the affected area with copious amounts of water and seek medical advice.

Do not use any charger other than that specifically provided for use with the equipment.

Do not use any cell or battery which is not designed for use with the equipment.

Secondary cells and batteries need to be charged before use. Always use the correct charger and refer to the manufacturer's instructions or equipment manual for proper charging instructions.

After extended periods of storage, it may be necessary to charge and discharge the cells or batteries several times to obtain maximum performance.

Dispose of properly.

## Precautions

- Operate the unit only on the power sources specified in "Specifications." For AC operation, use only the supplied AC adaptor. Do not use any other type of AC adaptor.
- Failure to use the supplied AC adaptor may cause the unit to malfunction, as the polarity of the plugs of other manufacturers may be different.



- When operating the unit on the built-in battery, it is recommended that you remove the AC adaptor from the wall outlet and the DC IN jack. Disconnect the plug of the external power source before operating the unit.

- Avoid exposure to temperature extremes, direct sunlight, moisture, sand, dust or mechanical shock. Never leave in a car parked in the sun.
- Do not expose the unit to strong impact or excessive force. A glass material is used for the display in some models. If the glass cracks or cracks, it may cause injury. In that case, stop using the unit immediately and make sure not to touch the damaged parts.

- Should any solid object or liquid fall into the unit, disconnect the AC adaptor, and have the unit checked by a qualified personnel before operating it any further.
- Since a strong magnet is used for the speakers, keep personal credit cards using magnetic coding or spring-wound watches away from the unit to prevent possible damage from the magnetism.

- To clean the casing, use a soft dry cloth. Do not use any type of solvent, such as alcohol or benzene, which may damage the finish.
- Do not operate the unit with wet hands since it may cause a short circuit.
- Make sure not to splash water on the unit. This unit is not waterproof.

- When you do not use the unit for a long time, charge the battery every 6 months.
- Under certain circumstances, especially when the air is very dry, it is not uncommon to experience a discharge of static electricity, or shock, when your body comes in contact with another object, in this case the ear buds touching your ear(s). The energy from this natural discharge is extremely small and is not emitted by your product but rather a natural environmental occurrence.
- Listening with this unit at high volume may affect your hearing. For traffic safety, do not use this unit while driving or cycling.

**If you have any questions or problems concerning your unit, please consult your nearest Sony dealer.**

## Troubleshooting

Should any problems persist after you have made the following checks, consult your nearest Sony dealer.

### General

**Display is dim, or no indication is displayed.**

- The unit is being used in extremely high or low temperatures or in a place with excessive moisture.

**The volume cannot be turned up when the unit is powered by the built-in battery.**

- When the remaining battery level gets low (when the battery icon is empty), the maximum volume level is limited to "22."
- Charge the unit by connecting the AC adaptor (supplied).

**The volume level is low in the "Bluetooth" function or the "AUDIO IN" function compared with the volume level when listening to the radio.**

Adjust the volume on the connected device.

**The unit enters standby mode automatically.**

- By default, this unit is set to enter standby mode automatically after about 15 minutes of no operation or audio signal output. See "Auto power off" in "Setting Menu Options" for details.

### Radio

**Very weak or interrupted sound, or unsatisfactory reception.**

- If you are in a building, listen near a window.
- Extend the antenna and adjust the length and the angle for best reception.
- If a mobile phone is placed close to the unit, a loud noise may be heard from the unit. Keep the phone away from the unit.

**A desired station cannot be received when a preset button is pressed.**

- Make sure you have selected the desired band (DAB or FM) before you press the preset button. One station for each band can be set to each button.
- You may have held down the preset button to which the station was assigned, causing the station to be replaced by a new one. Assign the desired station again.

• Preset buttons cannot be used when the setting menu is displayed.

• If you have moved to another region, perform the auto tune again. (See "To make a new station list" for details.) Then assign the new station to a preset button.

### BLUETOOTH

**There is no sound.**

- Make sure that this unit is not too far from the BLUETOOTH device, or that this unit is not receiving interference from a wireless LAN, another 2.4 GHz wireless device, or a microwave oven.
- Check that the BLUETOOTH connection was completed properly between this unit and the BLUETOOTH device.

• Perform pairing again. (See "Connecting with a BLUETOOTH device.")

• Keep away from metal objects or surfaces.

• Make sure that the BLUETOOTH function is activated on the BLUETOOTH device.

### The sound skips or the correspondence distance is short.

- If a device that generates electromagnetic radiation, such as a wireless LAN, other BLUETOOTH device(s), or a microwave oven is nearby, move away if possible. Or use the device and the unit away from such sources.

• Remove any obstacle between this unit and the device or move the device and the unit away from the obstacle.

• Locate this unit and the device as close to each other as possible.

• Re-position this unit.

• Try using the BLUETOOTH device in another position.

## A connection cannot be established.

- Depending on the device to be connected, it may require some time to start communication.
- Perform pairing again. (See steps 2 and 3 of "Connecting with a BLUETOOTH device.")
- To listen to music on a device that does not have a BLUETOOTH function, such as a PC without BLUETOOTH function, connect the device to the AUDIO IN jack on the unit. (See "Listening to Music from an External Device" for details.)
- A BLUETOOTH connection with two BLUETOOTH devices cannot be established at the same time.

## Pairing fails.

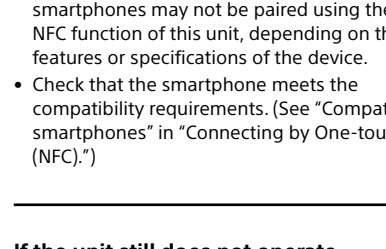
- Bring the BLUETOOTH device closer to the unit.
- Make sure that the BLUETOOTH function is activated on the BLUETOOTH device.
- If the BLUETOOTH connection cannot be established after pairing is completed, perform step 3 of "Connecting with a BLUETOOTH device."
- Delete the model name of this unit from the BLUETOOTH device and perform pairing again. (See steps 2 and 3 of "Connecting with a BLUETOOTH device.")

## Pairing using the NFC function fails.

- Try pairing manually. (See "Connecting with a BLUETOOTH device.") Some NFC-compatible smartphones may not be paired using the NFC function of this unit, depending on the features or specifications of the device.
- Check that the smartphone meets the compatibility requirements. (See "Compatible smartphones" in "Connecting by One-touch (NFC).")

## If the unit still does not operate properly

Try pressing RESET on the bottom using a thin rod. The unit will restart, retaining the user-configured settings.



## If maintenance service is performed

All user-configured settings, such as preset radio stations, the sleep timer, and the clock, may be initialized. Please note your settings in case you need to configure them again.

## Messages

### No preset

- No station in the selected band (DAB or FM) has been preset to the pressed button.

### Service not available

- The selected station or service is currently not broadcasting.

## Specifications

### Operating temperature range

5°C - 35°C

### Time display

24-hour system or 12-hour system

### Frequency range

DAB (Band-III): 174.928 MHz - 239.200 MHz

FM: 87.5 MHz - 108 MHz (0.05 MHz step)

### DAB (Band-III) frequency table (MHz)

Channel	Frequency	Channel	Frequency
5A	174.928	10A	209.936
5B	176.640	10B	211.648
5C	178.352	10C	213.360
5D	180.064	10D	215.072
6A	181.936	11A	216.928
6B	183.648	11B	218.640
6C	185.360	11C	220.352
6D	187.072	11D	222.064
7A	188.928	12A	223.936
7B	190.640	12B	225.648
7C	192.352	12C	227.360
7D	194.064	12D	229.072
8A	195.936	13A	230.784
8B	197.648	13B	232.496
8C	199.360	13C	234.208
8D	201.072	13D	235.920
9A	202.928	13E	237.488
9B	204.640	13F	239.200
9C	206.352		
9D	208.064		

### Speaker

Approx. 45 mm dia., 4 Ω, stereo

### Audio power output

2.5 W + 2.5 W (when the unit is powered by the supplied AC adaptor)

1.5 W + 1.5 W (when the unit is powered by the built-in battery)

### BLUETOOTH

Communication System  
 BLUETOOTH Specification version 4.2

Output  
 BLUETOOTH Specification Power Class 1

Maximum output power < 8 dBm (2.400 MHz - 2.483.5 MHz)

Maximum communication range Line of sight approx. 10 m\*

Frequency band 2.4 GHz band (2.4000 GHz - 2.4835 GHz)

Modulation method FHSS

Compatible BLUETOOTH Profiles\*\*

A2DP (Advanced Audio Distribution Profile)

AVRCP (Audio/Video Remote Control Profile)

Supported Codec\*\* SBC\*\*

Transmission range (A2DP) 20 Hz - 20 000Hz (Sampling frequency 44.1 kHz)

\* The actual range will vary depending on factors such as obstacles between devices, magnetic fields around a microwave oven, static electricity, reception sensitivity, antenna's performance, operating system, software application, etc.

\*\* BLUETOOTH standard profiles indicate the purpose of BLUETOOTH communication between devices.

\*\* Codec: Audio signal compression and conversion format

\*\* Subband Codec

### NFC

Operating frequency 13.56 MHz

### Input

AUDIO IN jack (ø 3.5 mm, stereo mini jack)

## Output

⌀ (headphones) jack (ø 3.5 mm, stereo mini jack)

## Power requirements

Built-in lithium-ion rechargeable battery

## Power

DC 5.8 V 2.0 A (using the supplied AC adaptor connected to AC 100 V - 240 V, 50 Hz/60 Hz power supply) or, using built-in lithium-ion battery