

Personal Audio System

Operating Instructions
Manual de Operação



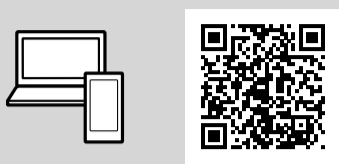
SRS-XB2 * 4 5 9 2 8 4 0 3 1 * (1)

Help Guide

(web document for a PC/smartphone)
Explains detail about the unit, BLUETOOTH connection method, etc.

Guia de Ajuda

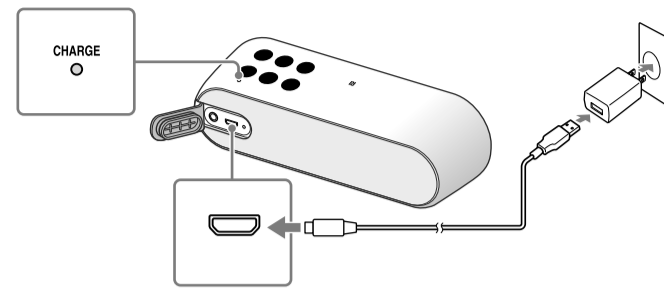
(documento web para PC/smartphone)
Explica os detalhes sobre a unidade, método de conexão BLUETOOTH, etc.



http://rd1.sony.net/help/speaker/srs-xb2/h_zz/

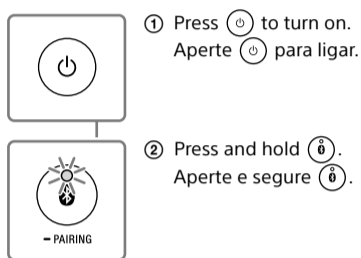
Charging the unit
Recarga da unidade

Charge the battery for the first time.
Carregue a bateria pela primeira vez.



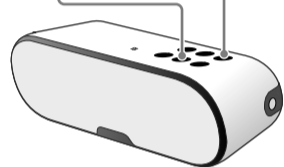
BLUETOOTH connection
Conexão BLUETOOTH

1 Set the unit to the pairing mode.
Configure a unidade no modo de emparelhamento.

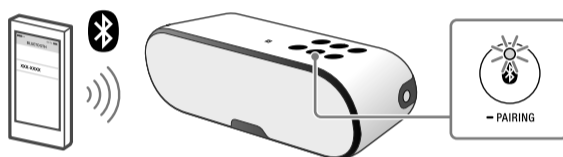
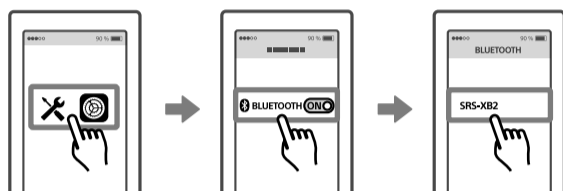


- ① Press to turn on.
Aperte para ligar.
- ② Press and hold .
Aperte e segure .

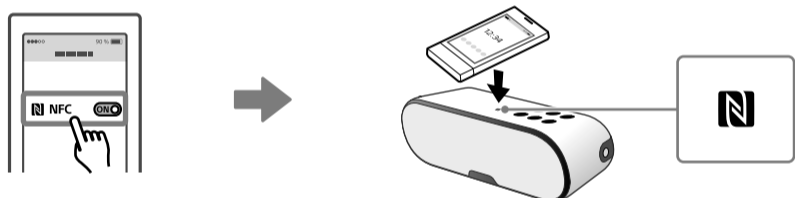
* Step ② is unnecessary when using the unit for the first time.
* O ② passo é desnecessário ao utilizar a unidade pela primeira vez.



2 Pairing the unit to your smartphone/iPhone.
Emparelhar a unidade ao seu smartphone/iPhone.



To connect by One-touch (NFC)
Conectar através do One-touch (NFC)

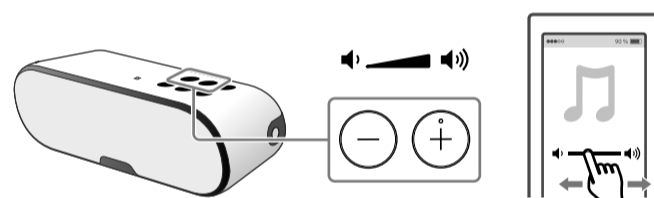


Listening
Escutar

Start playback.
Iniciar reprodução.



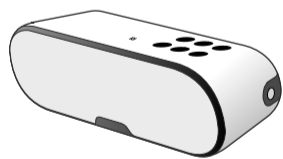
Adjust the volume.
Ajustar o volume.



Listening with two units (Speaker Add function - double mode/stereo mode)
Escutar com duas unidades (Função de adicionar coluna - modo duplo/modo estéreo)

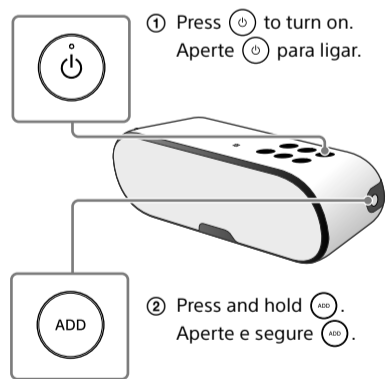
1 Preparation for two SRS-XB2 units.
Preparação para duas unidades SRS-XB2.

A Unit A/Unidade A



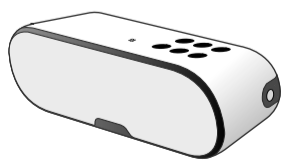
2 Set unit **A** and then **B**.
Configure a unidade **A** e posteriormente a **B**.

A

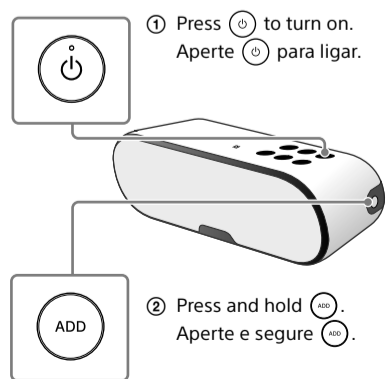


- ① Press to turn on.
Aperte para ligar.
- ② Press and hold .
Aperte e segure .

B Unit B/Unidade B

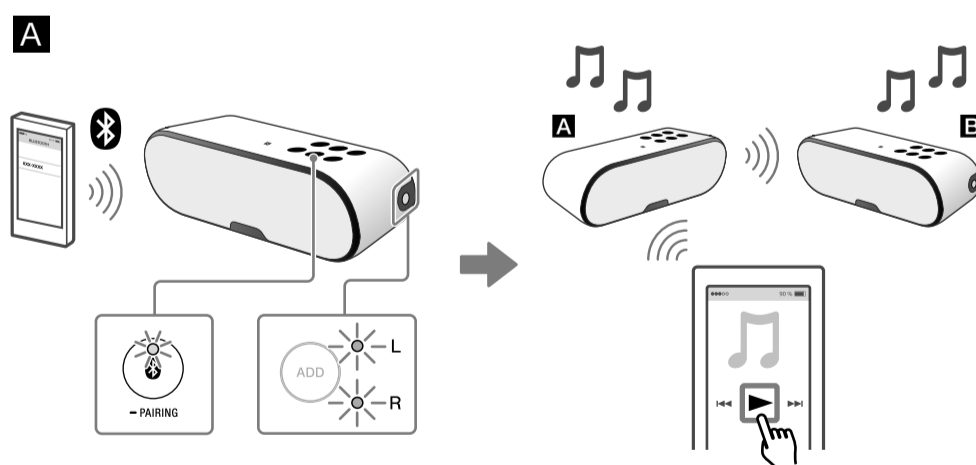


B



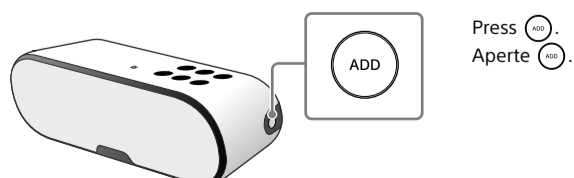
- ① Press to turn on.
Aperte para ligar.
- ② Press and hold .
Aperte e segure .

3 Connect your smartphone/iPhone to unit **A** with the indicator lit.
Conecte seu smartphone/iPhone à unidade **A** com o indicador aceso.



* The default is double mode.
* O modo duplo é o modo padrão.

To switch double mode/stereo mode (Lch/Rch)
Alterar modo duplo/modo estéreo (Lch/Rch)



Press .
Aperte .