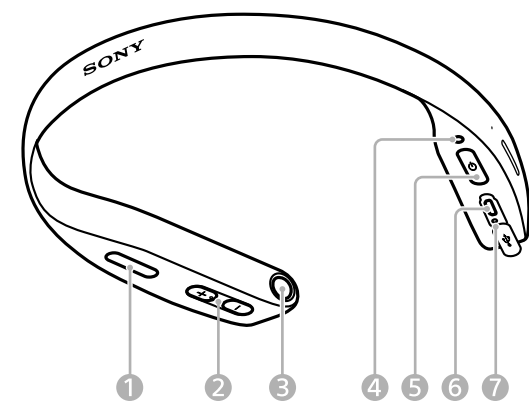


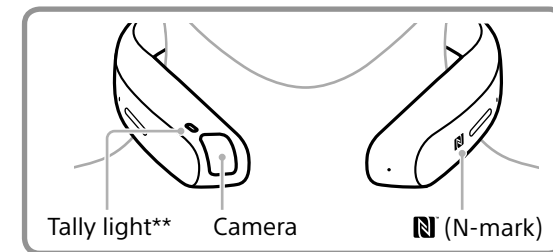
Parts and Controls

Unit



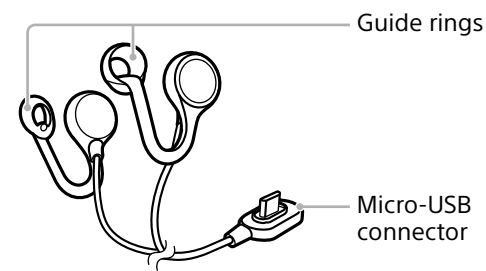
- 1 Custom button
- 2 Volume +/- button*
- 3 Voice input button
- 4 Indicator light
- 5 (power) button
- 6 Micro-USB port
- 7 Charge light

* The volume + button has a tactile dot.

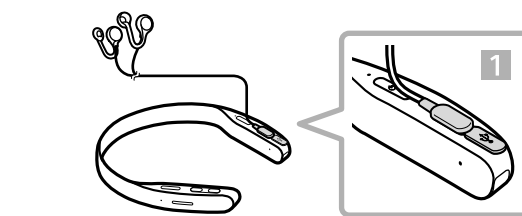


** Camera indicator

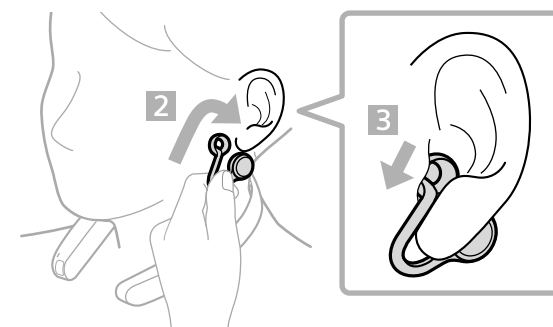
Open-ear earphones



How to wear



- 1 Connect the unit and the Open-ear earphones.



- 2 Slide up the earphone from under your ear along your jaw then place it into your ear.
- 3 Pull the earphone down then fit it into your ear.

BC

Before operating the unit, please read this guide thoroughly and retain it for future reference.

Owner's Record

The serial number is located on the right side of the unit where the vertical surface faces your neck when you wear the unit.

Record the serial number in the space provided below. Refer to them whenever you call upon your Sony Customer Experience Center regarding this unit.

Model No. _____
Serial No. _____

WARNING

To reduce the risk of electrical shock, do not open the cabinet. Refer servicing to qualified personnel only.

Do not install the unit in a confined space, such as a bookcase or built-in cabinet.

Do not expose the batteries (battery pack or batteries installed) to excessive heat such as sunshine, fire or the like for a long time.

This unit is not disconnected from the AC power source (mains) as long as it is connected to the wall outlet, even if the unit itself has been turned off.

If you have any questions about this unit, you may call: Sony Customer Experience Center 1-800-222-SONY(7669) <http://www.sony.com/support/>.

Declaration of Conformity	
Trade Name:	SONY
Model No.:	FL-N01S/FL-N01M/FL-N01L
Responsible Party:	Sony Electronics Inc.
Address:	16535 Via Esprillo, San Diego, CA92127 USA
Telephone No.:	858-942-2230

This device complies with Part 15 of the FCC Rules. Operation is subject to the following two conditions: (1) this device may not cause harmful interference, and (2) this device must accept any interference received, including interference that may cause undesired operation.

You are cautioned that any changes or modifications not expressly approved in this manual could void your authority to operate this equipment.

This equipment must not be co-located or operated in conjunction with any other antenna or transmitter.

Note

This equipment has been tested and found to comply with the limits for a Class B digital device, pursuant to Part 15 of the FCC Rules. These limits are designed to provide reasonable protection against harmful interference in a residential installation. This equipment generates, uses and can radiate radio frequency energy and, if not installed and used in accordance with the instructions, may cause harmful interference to radio communications. However, there is no guarantee that interference will not occur in a particular installation. If this equipment does cause harmful interference to radio or television reception, which can be determined by turning the equipment off and on, the user is encouraged to try to correct the interference by one or more of the following measures:

- Reorient or relocate the receiving antenna.
- Increase the separation between the equipment and receiver.
- Connect the equipment into an outlet on a circuit different from that to which the receiver is connected.
- Consult Sony Customer Experience Center or an experienced radio/TV technician for help.

The shielded interface cable recommended in this manual must be used with the unit in order to comply with the limits for a digital device pursuant to Subpart B of Part 15 of FCC Rules.

This unit complies with FCC radiation exposure limits set forth for an uncontrolled environment and meets the FCC radio frequency (RF) Exposure Guidelines. This unit has very low levels of RF energy that is deemed to comply without testing of specific absorption rate (SAR).

Important Safety Instructions

- 1) Read these instructions.
- 2) Keep these instructions.
- 3) Heed all warnings.
- 4) Follow all instructions.
- 5) Do not use this apparatus near water.
- 6) Clean only with dry cloth.

- 7) Do not block any ventilation openings. Install in accordance with the manufacturer's instructions.
- 8) Do not install near any heat sources such as radiators, heat registers, stoves, or other apparatus (including amplifiers) that produce heat.
- 9) Do not defeat the safety purpose of the polarized or grounding-type plug. A polarized plug has two blades with one wider than the other. A grounding type plug has two blades and a third grounding prong. The wide blade or the third prong are provided for your safety. If the provided plug does not fit into your outlet, consult an electrician for replacement of the obsolete outlet.
- 10) Protect the power cord from being walked on or pinched particularly at plugs, convenience receptacles, and the point where they exit from the apparatus.
- 11) Only use attachments/accessories specified by the manufacturer.
- 12) Use only with the cart, stand, tripod, bracket, or table specified by the manufacturer, or sold with the apparatus. When a cart is used, use caution when moving the cart/apparatus combination to avoid injury from tip-over.



- 13) Unplug this apparatus during lightning storms or when unused for long periods of time.
- 14) Refer all servicing to qualified service personnel. Servicing is required when the apparatus has been damaged in any way, such as power-supply cord or plug is damaged, liquid has been spilled or objects have fallen into the apparatus, the apparatus has been exposed to rain or moisture, does not operate normally, or has been dropped.

Precautions

On sound volume

- Keep the sound volume appropriate so you can hear ambient sounds such as at rail crossings, train station platforms, and construction sites.
- Listening with this unit at high volume may affect your hearing.

On charging the unit

- This unit can be charged using USB only. A personal computer with a USB port is required for charging.
- If you store the unit for a long time, charge the battery once every half year to prevent over-discharge.
- If the length of time you can use the unit has become extremely short, the rechargeable battery should be replaced with a new one. Please contact your nearest Sony Customer Experience Center for a battery replacement.

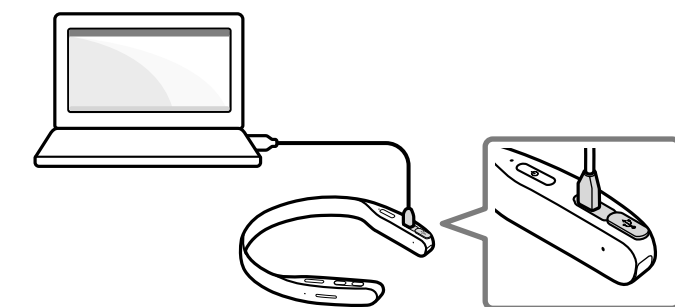
On wearing the unit

- Do not charge the unit while wearing it.
- The unit cannot be used on kids and animals.
- Do not cover the unit with a scarf, clothes, etc.
- Do not fall asleep while wearing the unit.
- Do not wear magnetic accessories, such as necklaces, while using the unit.
- If you experience discomfort such as itchiness, heat or compression while wearing, take the unit off immediately.
- Do not contact the moderately heated surface of the unit for long time, especially if you have sensitive skin. It may cause swelling or blistering as symptoms of moderate temperature burn.

On operating the unit

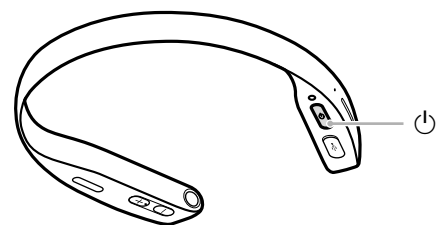
- The unit does not prevent dust, splashes of liquid, or water from entering.
- Do not get the unit wet. If splashes of liquid enter the unit, it does not only cause malfunctions, but it may also damage the unit beyond repair.
 - If water or sweat splash on the unit, wipe off the unit carefully with a dry cloth.
- There may be a difference between the image shot with the camera of the unit and the actual subject, or there may be a difference in the uniformity of the brightness in images.
- The unit's camera comes with a fixed focus system and it may be difficult to focus on close subjects.
- Do not use the unit in a location subject to water, smoke, steam, or excessive dust. Use in a location that may cause burn injury or electric shock.
- Do not use the unit during extreme exercise.
- Do not handle the unit with your hands covered in chemicals such as a sunscreen.

Charging



Use the supplied micro-USB cable.

Power On / Off



Press and hold the (power) button for 4 seconds until the unit vibrates. After about 70 seconds, the unit will power on and you can hear the announcement that the unit is ready for operation.

To power off, press and hold the (power) button for more than 4 seconds.

Setup

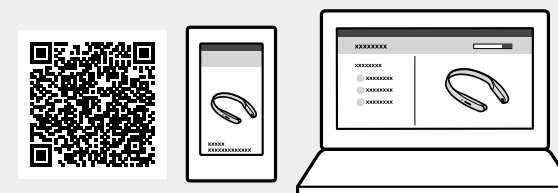
You need to download the "Future Lab Program N" application for setting up FL-N01. Search in Google Play™ (Play Store) or App Store, and download to your smartphone.

Help Guide

Web document for a PC/smartphone

Learn more about N...

<http://rd1.sony.net/help/futurelab/fl-n01/en/>

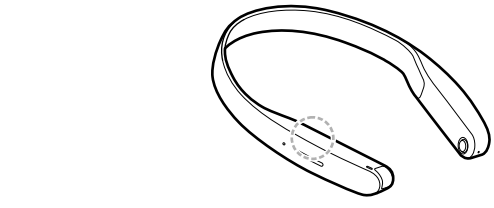


On BLUETOOTH communications

- BLUETOOTH wireless technology operates within a range of about 10 m (30 feet).

Maximum communication range may vary depending on obstacles (people, metal objects, walls, etc.) or the communications environment.

- The antenna is built into the unit as illustrated in the dotted line. The sensitivity of the BLUETOOTH communications will improve by turning the direction of the built-in antenna to the connected BLUETOOTH device. When obstacles are between the antenna of the connected device and the built-in antenna of this unit, noise or audio dropout may occur, or communications may be disabled.



- BLUETOOTH communications may be disabled, or noise or audio dropout may occur under the following conditions.
 - There is a person between the unit and the BLUETOOTH device. This situation may be improved by placing the BLUETOOTH device facing the antenna of the unit.
 - There is an obstacle, such as a metal object or wall, between the unit and the BLUETOOTH device.
 - A device using 2.4 GHz frequency, such as a Wi-Fi device, cordless telephone, or microwave oven, is in use near this unit.
- Because BLUETOOTH devices and Wi-Fi (IEEE802.11b/g/n) use the same frequency (2.4 GHz), microwave interference may occur resulting in noise or audio dropout or communications may be disabled if this unit is used near a Wi-Fi device. In such a case, perform the following.
 - Use this unit at least 10 m (30 feet) away from the Wi-Fi device.
 - If this unit is used within 10 m (30 feet) of a Wi-Fi device, turn off the Wi-Fi device.
 - Install this unit and the BLUETOOTH device as near to each other as possible.
- Microwaves emitting from a BLUETOOTH device may affect the operation of electronic medical devices. Turn off this unit and other BLUETOOTH devices in the following locations, as it may cause an accident:
 - where inflammable gas is present, in a hospital, or a gasoline station
 - near automatic doors or a fire alarm
- Do not use the unit on an airplane. Radio waves may affect instruments, causing an accident due to malfunction.
- Due to the characteristic of BLUETOOTH wireless technology, the sound played on this unit is slightly delayed from the sound played on the BLUETOOTH device when talking on the telephone or listening to the music.
- This unit supports security capabilities that comply with the BLUETOOTH standard to provide a secure connection when the BLUETOOTH wireless technology is used, but security may not be enough depending on the setting. Be careful when communicating using BLUETOOTH wireless technology.
- We do not take any responsibility for the leakage of information during BLUETOOTH communications.
- Connection with all BLUETOOTH devices cannot be guaranteed.
 - A device featuring the BLUETOOTH function is required to conform to the BLUETOOTH standard specified by Bluetooth SIG, Inc. and be authenticated.
 - Even if the connected device conforms to the above mentioned BLUETOOTH standard, some devices may not be connected or work correctly, depending on the features or specifications of the device.
 - While talking on the phone hands free, noise may occur, depending on the device or communication environment.
- Depending on the device to be connected, it may require some time to start communications.

Note on static electricity

- Static electricity accumulated in the body may cause mild tingling. To minimize the effect, wear clothes made from natural materials.

On photos and copyright

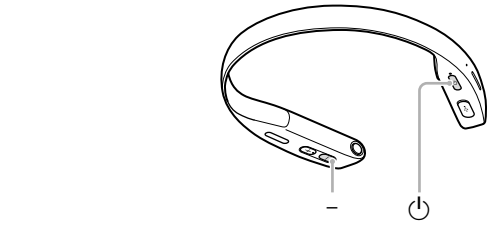
- You should only take photos in environments where you are permitted to do so. You should always get permission from your subject before taking photos.
- Various countries have laws regulating taking photos of people or things. It is your responsibility to make sure you comply with applicable laws when using the unit.
- Television programs, films, videotapes, and other materials may be copyrighted. Unauthorized recording of such materials may be contrary to the provisions of the copyright laws.

No compensation for damaged content or recording failure

- Sony cannot compensate for failure to record or loss or damage of recorded content due to a malfunction of the camera, recording media, etc.

If the unit does not operate properly

- Reset the unit as follows.
 - Press and hold the ⏻ button for 16 seconds to shut down the unit then turn the unit on again. Pairing information is not deleted.
- If the problem persists even after the resetting operation above, initialize the unit as follows.
 - Press and hold the ⏻ button for 16 seconds to shut down the unit, then press and hold the ⏻ and volume - buttons simultaneously for more than 10 seconds until the unit vibrates. The indicator light flashes for about 10 minutes then the unit turns off. All data such as music files and photos are deleted, and FL-N01 is reset to the factory settings.



- After the unit is initialized, it may not connect to your smartphone. In this case, delete the pairing information of the unit, and then pair them again.

Note on wireless network function

We assume no responsibility whatsoever for any damage caused by unauthorized access to, or unauthorized use of, destinations loaded on the unit, resulting from loss or theft.

Note on unit disposal

The built-in rechargeable battery of the unit is recyclable. Do not remove the battery yourself. Consult Sony Customer Experience Center.

Others

- Do not place this unit in a place exposed to humidity, dust, soot or steam, or subject to direct sunlight. Do not leave the unit in a car for a long time. It may cause a malfunction.
- Using the BLUETOOTH device may not function on mobile phones, depending on radio wave conditions and location where the equipment is being used.
- For traffic safety, do not use the unit with the supplied Open-ear earphones while driving or cycling.
- Do not put weight or pressure on this unit as it may cause the unit to deform during long storage.
- Do not subject the unit to excessive shock.
- Do not place magnetic objects such as a credit card near the unit while carrying the unit.
- Clean the unit using a soft dry cloth with a small amount of neutral detergent. Do not use thinner, benzin, or alcohol since these chemicals damage the finish of the unit.
- For details on operating your mobile phone or wireless device, refer to the operating instructions supplied with the mobile phone or wireless device.

Notes on recognition technologies

The unit is equipped with recognition technologies though there is a possibility that these technologies may not work properly. You may experience the following issues, but they are not malfunctions.

Voice recognition technology

- Voice recognition may not work properly depending on how you speak such as your volume, speed, articulateness or accent, etc., or depending on other elements such as ambient noise or echoing, etc.

Activity recognition technology

- Your activity may not be recognized correctly while you are cycling, running, walking, or standing still.

Positioning and place recognition technology

- The positioning technology may not work properly when you are in an urban canyon or indoor space. If this happens, you cannot get event or restaurant information via the personalized radio function.
- “Home” and “work place” are recognized by the place recognition technology only when you commute from your home to your place of work. It takes a few days to recognize “home” or “work place”.

Specifications

Unit

Audio DSP & Sensor Hub:

“Low Power Wearable SoC” made by Sony

Storage:

8 GB of user area

Speaker:

Stereo speaker
600 mW × 2 (maximum output)

Microphone: Mic × 4

Sensor: Accelerometer/Gyro/GNSS (GPS + GLONASS)

Communication System:

Bluetooth 4.1

NFC Tag^{*1}

Camera:

Still image: 8 megapixels

Movie image size: 720p30

Notifications: Indicator light, charge light, tally light (camera indicator), vibration

Interface^{*2}: Micro-USB Type B used for a PC connection (USB 2.0), charging, and the supplied Open-ear earphones connection

Power Source: Built-in lithium-ion rechargeable battery (760 mAh)

Power Consumption:

Playback at A2DP: 1.7 W

Camera shooting: 2.4 W

Charging: 2.5 W

Power Charge: Micro-USB port

Supported Audio File^{*3}: MP3, AAC

Operating temperature^{*4}: 5 °C to 35 °C (41 °F to 95 °F)

Dimensions (w/h/d):

S: Approx. 140 mm × 150 mm × 18 mm (5 ⁵⁄8 in × 6 in × ²³⁄32 in)

M: Approx. 155 mm × 160 mm × 18 mm (6 ¹⁄8 in × 6 ³⁄8 in × ²³⁄32 in)

L: Approx. 170 mm × 165 mm × 18 mm (6 ³⁄4 in × 6 ¹⁄2 in × ²³⁄32 in)

Mass:

S: Approx. 77 g (2.8 oz)

M: Approx. 79 g (2.8 oz)

L: Approx. 81 g (2.9 oz)

Open-ear earphones

Type: Open-ear^{*5}, dynamic

Cable: Approx. 0.6 m (23.62 in)

Connector: Micro-USB type B^{*6}

Mass: Approx. 12 g with cable

General

Included Items:

- Unit (1)
- Open-ear earphones (1)
- Micro-USB cable (1)
- Operating Instructions
- Card

^[1] NFC tag is used by the BLUETOOTH pairing function for Android™ devices.

^[2] A battery charger except charging with a PC cannot be used with this unit.

^[3] Refer to Help Guide for more details about supported audio file format.

^[4] If the unit is outside of the operating temperature, the unit cannot be charged and the charging light of the unit does not light up.

^[5] This is a unique mechanism using a sound duct, developed by Sony.

^[6] This micro-USB cable can be used only for FL-N01S/FL-N01M/FL-N01L.

Design and specifications are subject to change without notice.

Copyrights and trademarks

- The BLUETOOTH® word mark and logos are owned by the Bluetooth SIG, Inc. and any use of such marks by Sony Corporation is under license.
- The N-Mark is a trademark or registered trademark of NFC Forum, Inc. in the United States and in other countries.
- The Apple logo and iPhone are trademarks of Apple Inc., registered in the U.S. and other countries. App Store is a service mark of Apple Inc.
- Google Play and Android are trademarks of Google Inc.
- MPEG Layer-3 audio coding technology and patents licensed from Fraunhofer IIS and Thomson.
- Future Lab Program is a trademark of Sony Corporation.

End users license agreement

Notes on the License

This product contains software that Sony uses under a licensing agreement with the owner of its copyright. We are obligated to announce the contents of the agreement to customers under requirement by the owner of copyright for the software. The content of the license is provided on the web page. Please read the content of the following URL.

URL: http://oss.sony.net/License/FL-N01



Notice on GNU GPL/LGPL applied software

This product contains software that is subject to the following GNU General Public License (hereinafter referred to as “GPL”) or GNU Lesser General Public License (hereinafter referred to as “LGPL”). These establish that customers have the right to acquire, modify, and redistribute the source code of said software in accordance with the terms of the GPL or LGPL supplied. The source code for the abovelisted software is available on the Web.

To download, please access the following URL then select the model name “FL-N01”.

URL: http://oss.sony.net/Products/Linux/

Please note that Sony cannot answer or respond to any inquiries regarding the content of the source code.

