

IC Recorder
Operating Instructions



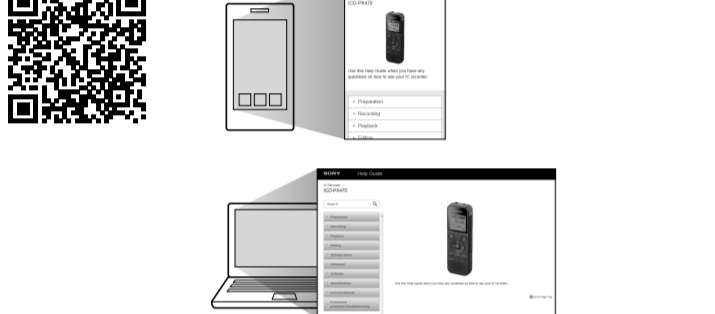
ICD-PX470

4-595-545-12(1)
Barcode and model number information.

Refer to the Help Guide

This is the Operating Instructions, which provides you with instructions on the basic operations of the IC recorder. The Help Guide is an online manual.

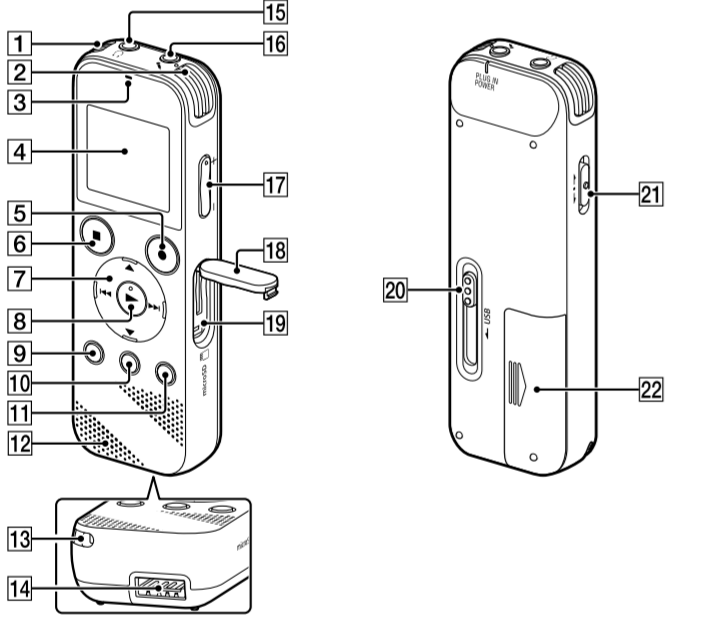
http://rd1.sony.net/help/icd/p47/h_ce/



Check the supplied items

- IC Recorder (1)
LR03 (size AAA) alkaline batteries (2)
Operating Instructions (this sheet)
Warranty card
Application Software, Sound Organizer 2

Parts and controls

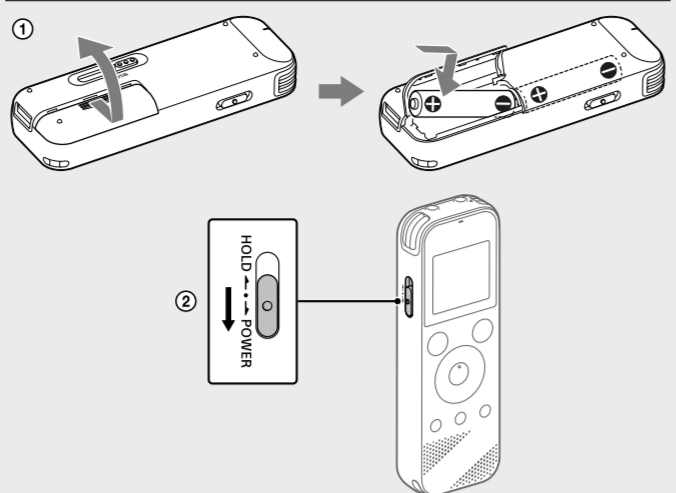


- 1 Built-in microphones (stereo) (L)
2 Built-in microphones (stereo) (R)
3 Operation indicator
4 Display window
5 REC/PAUSE (record/pause) button
6 STOP button
7 Control button (▲ DPC (Digital Pitch Control), ▼ A-B (repeat A-B)/◀ (review/fast backward), ▶ (cue/fast forward))
8 (play/enter) button*
9 + BACK/ HOME button (*: press, •: press and hold)
10 T-MARK (track mark) button
11 OPTION button
12 Built-in speaker
13 Strap hole (No strap is supplied with your IC recorder.)
14 USB connector compartment
15 (headphones) jack
16 (microphone) (PLUG IN POWER) jack*
17 VOL +/- (volume +/-) button*
18 Slot cover
19 microSD card slot (The card slot is located under the cover.)
20 USB slide lever
21 HOLD+POWER switch
22 Battery compartment

* The play/enter button, VOL +/- (volume +/-) button, and (microphone) (PLUG IN POWER) jack have a tactile dot. Use the tactile dot as a reference when operating the IC recorder.

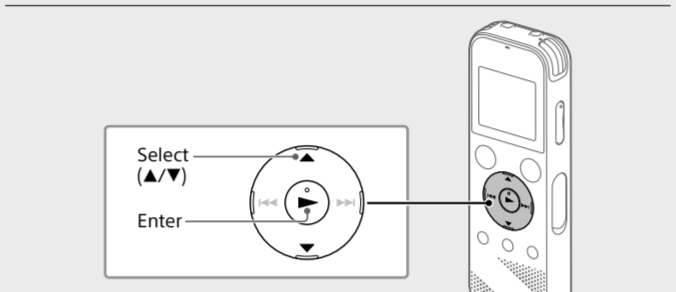
Let's try out your new IC recorder

Power on



- Slide and lift the battery compartment lid, insert LR03 (size AAA) alkaline batteries with the correct polarity, and close the lid.
Turn the power on.
To turn the power on: Slide and hold the HOLD+POWER switch in the direction of "POWER" until the window display appears.

Initial settings

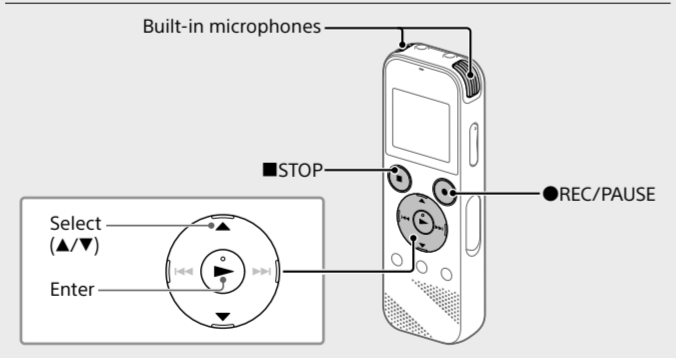


When you turn on your IC recorder for the first time, the "Configure Initial Settings" screen appears on the display window.

- Select "Yes" to start the initial settings.
Select the display language.
Set the current year, month, day, hour, and minute.
Select "Next."
Select "ON" or "OFF" to turn on or off the beep sound.

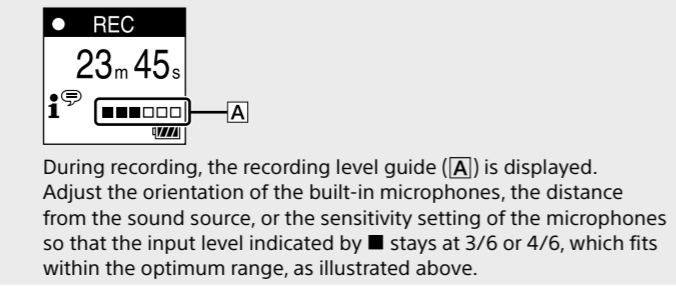
You can change any of the initial settings at any time later. For detailed instructions, refer to the Help Guide.

Record



- Before you start using the IC recorder, make sure that the HOLD+POWER switch is at the center dot position.
You can select a recording scene for each situation by selecting "Scene Select" in the OPTION menu.

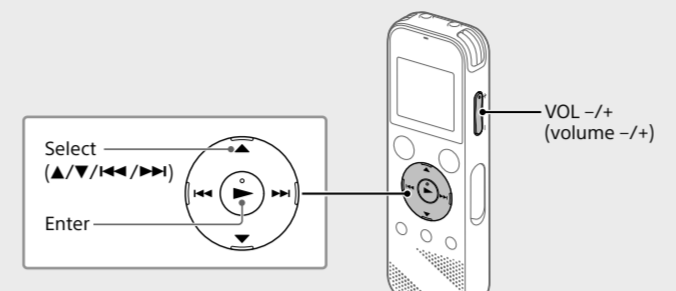
- Recorded audio files are stored in "FOLDER01" under "Recorded Files" by default.
Select "Record" from the HOME menu.
Select the folder you want to store the recorded files.
Turn the IC recorder so that its built-in microphones point in the direction of the recording source.
Press REC/PAUSE.



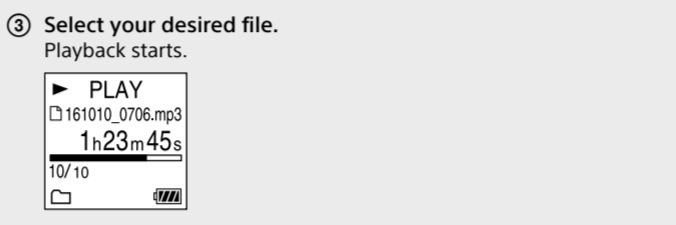
During recording, the recording level guide (AL) is displayed. Adjust the orientation of the built-in microphones, the distance from the sound source, or the sensitivity setting of the microphones so that the input level indicated by AL stays at 3/6 or 4/6, which fits within the optimum range, as illustrated above.

- Press STOP to stop recording.
After you stopped recording, you can press play to play the file you have just recorded.

Listen

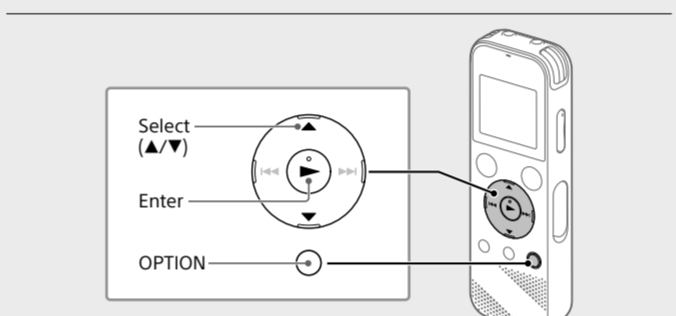


Recorded audio files are stored in "FOLDER01" under "Recorded Files" by default.
Select "Recorded Files" from the HOME menu.

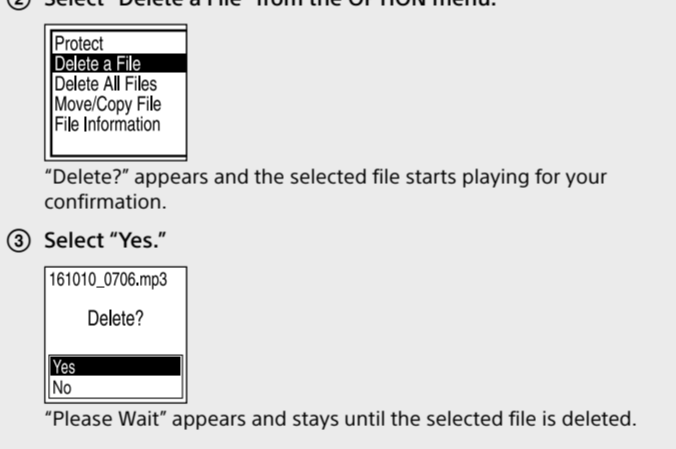


- Press STOP to stop playback.
Press VOL +/- to adjust the volume.

Delete

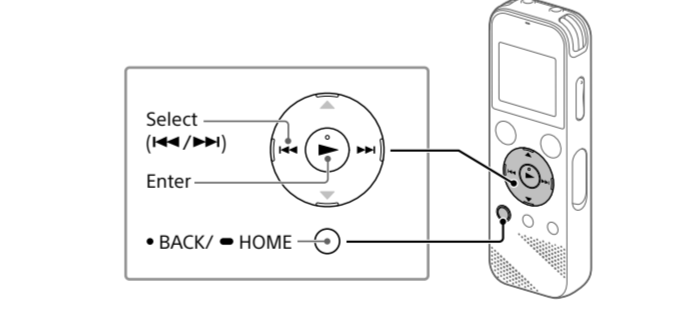


- Select the file you want to delete from the list of recorded files or play back the file you want to delete.
Select "Delete a File" from the OPTION menu.



Using the HOME menu

You can use the HOME menu for a variety of operations, including locating and playing a recorded file and changing the settings of your IC recorder.

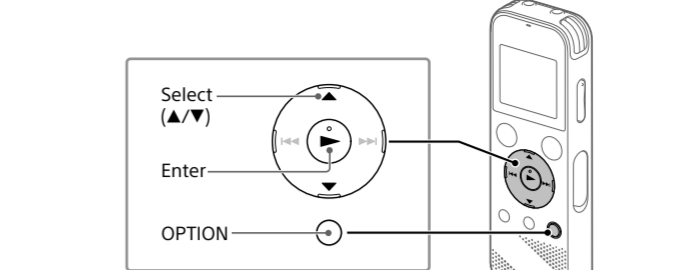


- Press and hold BACK/HOME. The HOME menu screen appears.
The HOME menu items are aligned in the following sequence: Music, Recorded Files, Record, Settings, Back to XX*.
Select your desired function from the following:
Music, Recorded Files, Record, Settings, Back to XX*.

Press STOP to return to the screen displayed before you entered the HOME menu.

Using the OPTION menu

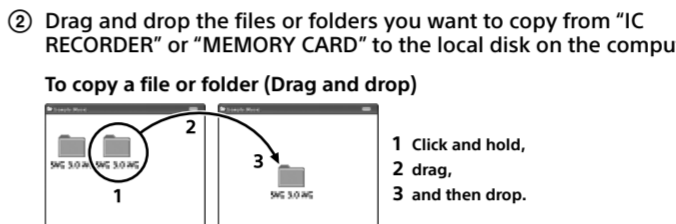
You can use the OPTION menu to perform a variety of functions, including changing the settings of your IC recorder.



- Select your desired function from the HOME menu, and then press OPTION.
Select the menu item for which you want to change the setting.
Select your desired setting option.

Copying files from your IC recorder to a computer

You can copy the files and folders from your IC recorder to a computer to store them.



- Slide the USB slide lever in the direction of the arrow, and insert the USB connector into the USB port of a running computer.
Drag and drop the files or folders you want to copy from "IC RECORDER" or "MEMORY CARD" to the local disk on the computer.

Installing Sound Organizer 2

Install Sound Organizer on your computer. Sound Organizer allows you to exchange files between your IC recorder and your computer.

- Notes:
Sound Organizer is compatible with Windows computers only.
This IC recorder is compatible with Sound Organizer 2 only.

- Slide the USB slide lever in the direction of the arrow, and insert the USB connector into the USB port of a running computer.
Make sure the IC recorder is successfully detected by the computer.

- Go to the [Start] menu, click [Computer], and then double-click [IC RECORDER] - [FOR WINDOWS].
Double-click [SoundOrganizer_V2001] (or [SoundOrganizer_V2001.exe]).

- When the [Ready to Install the Program] window appears, click [Install]. The installation starts.
When the [Sound Organizer has been installed successfully.] window appears, check [Launch Sound Organizer 2 Now], and then click [Finish].

- Notes:
You may need to restart your computer after installing Sound Organizer.

Precautions

- On power: DC 3.0 V: Use two LR03 (size AAA) alkaline batteries. DC 5.0 V: when using USB AC adaptor.
On safety: Do not operate the unit while driving, cycling or operating any motorized vehicle.
On handling: Do not leave the unit in a location near heat sources, or in a place subject to direct sunlight.
Do not put your IC recorder into a bag with the headphones/earphones cord wrapped around it and subject the bag to strong impact.

- Listening with this unit at high volume may affect your hearing. For traffic safety, do not use this unit while driving or cycling.
You may feel pain in your ears if you use the headphones when the ambient air is very dry.

On maintenance: Clean the exterior, use a soft cloth slightly moistened in water. Then use a soft dry cloth to wipe the exterior.

If you have any questions or problems concerning your unit, please consult your nearest Sony dealer.

WARNING

Do not expose the batteries (battery pack or batteries installed) to excessive heat such as sunshine, fire or the like for a long time.

CAUTION

Risk of explosion if battery is replaced by an incorrect type. Dispose of used batteries according to the instructions.
Notice for the customers: the following information is only applicable to equipment sold in the countries applying EU directives.

High sound pressure
Hearing damage risk
Do not listen at high volume levels for long periods.

The validity of the CE marking is restricted to only those countries where it is legally enforced, mainly in the countries EEA (European Economic Area).

Disposal of waste batteries and electrical and electronic equipment (applicable in the European Union and other countries with separate collection systems)

This symbol on the product, the battery or on the packaging indicates that the product and the battery shall not be treated as household waste. On certain batteries this symbol might be used in combination with a chemical symbol.

Specifications

Table with columns for Capacity, Maximum recording time, and recording modes (LPCM, MP3).

Notes:
When you are going to record continuously for a long time, you may have to replace the batteries with new ones in the middle of recording.

Table showing REC Mode, Recording time, and Playback time for various modes.

When using NH-AAA rechargeable batteries**
Table with columns for REC Mode, Recording time, and Playback time.

Dimensions (w/h/d) (not incl. projecting parts and controls)
Approx. 38.3 mm x 114.1 mm x 19.3 mm

Mass: Approx. 74 g (including two LR03 (size AAA) alkaline batteries)

Table with columns for Operating temperature, Operating humidity, Storage temperature, and Storage humidity.

Compatible memory cards
microSDHC cards from 4 GB to 32 GB

Notes:
A small amount of the internal memory is used for file management.
When the built-in memory is formatted with the IC recorder.

Trademarks

- Microsoft, Windows and Windows Media are registered trademarks or trademarks of Microsoft Corporation.
macOS is a trademark of Apple Inc.



All other trademarks and registered trademarks are trademarks or registered trademarks of their respective holders.

This product is protected by certain intellectual property rights of Microsoft Corporation.

The "Sound Organizer 2" uses software modules as shown below: Windows Media Format Runtime

License

Notes on the License
This IC recorder comes with software that are used based on licensing agreements with the owners of that software.

On GNU GPL/LGPL applied software
The software that is eligible for the following GNU General Public License (hereinafter referred to as "GPL") or GNU Lesser General Public License (hereinafter referred to as "LGPL") are included in the IC recorder.

On maintenance: Clean the exterior, use a soft cloth slightly moistened in water. Then use a soft dry cloth to wipe the exterior.

