

DIGITAL RADIO DAB/FM

Operating Instructions GB
Mode d'emploi FR

DAB DAB+

RDS

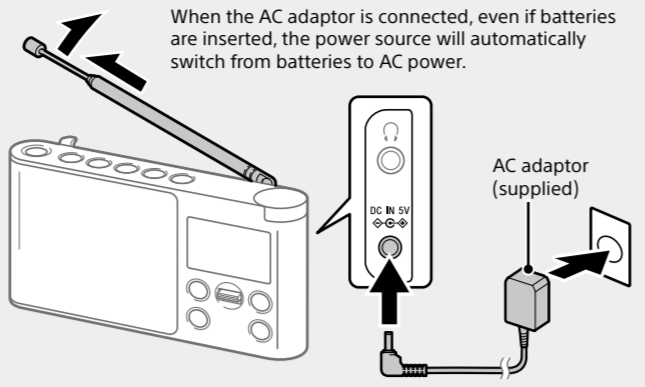
©2017 Sony Corporation Printed in China

https://www.sony.net/

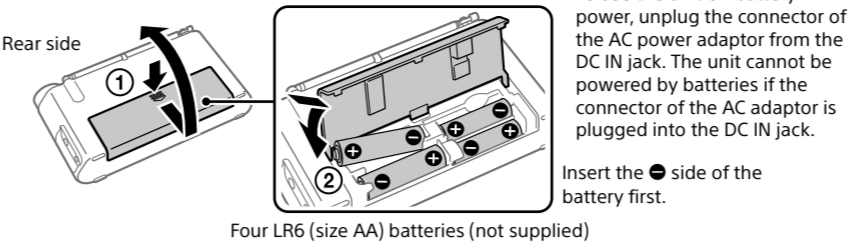
XDR-S41D

Getting Started

1 Connect the AC adaptor or insert four batteries. Then, extend the antenna.

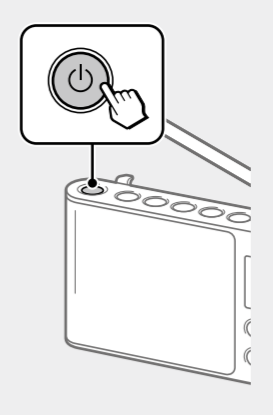


To use the unit on batteries



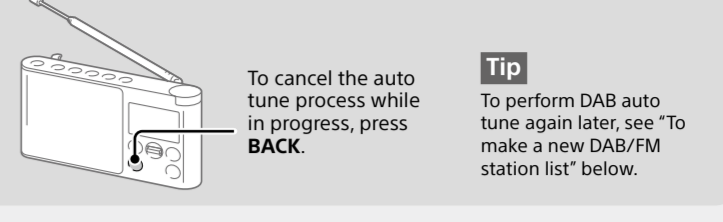
Tips: The backlight will turn off if no operation is performed for about 30 seconds to minimize power consumption. Alkaline batteries are recommended. The use of manganese batteries is not recommended, since this type of battery has an extremely short usage time.

2 Turn on the radio.



When turning on the radio for the first time

DAB auto tune will start automatically when the radio is turned on for the first time. After DAB auto tune is completed, the radio receives the first station in the DAB station list stored by DAB auto tune. If you want to cancel DAB auto tune process, press BACK.



Listening to the Radio

1 Turn on the radio, and then select the DAB or FM function.

When selecting the FM function for the first time: FM auto tune will start automatically when the FM function is selected for the first time. Includes diagram of the radio showing the 'DAB/FM' button being pressed.

2 Select the desired station or service.

Slide the jog lever up or down to make a selection. Includes diagrams showing the radio displaying 'Selected station' and 'Station name' for both DAB and FM functions.

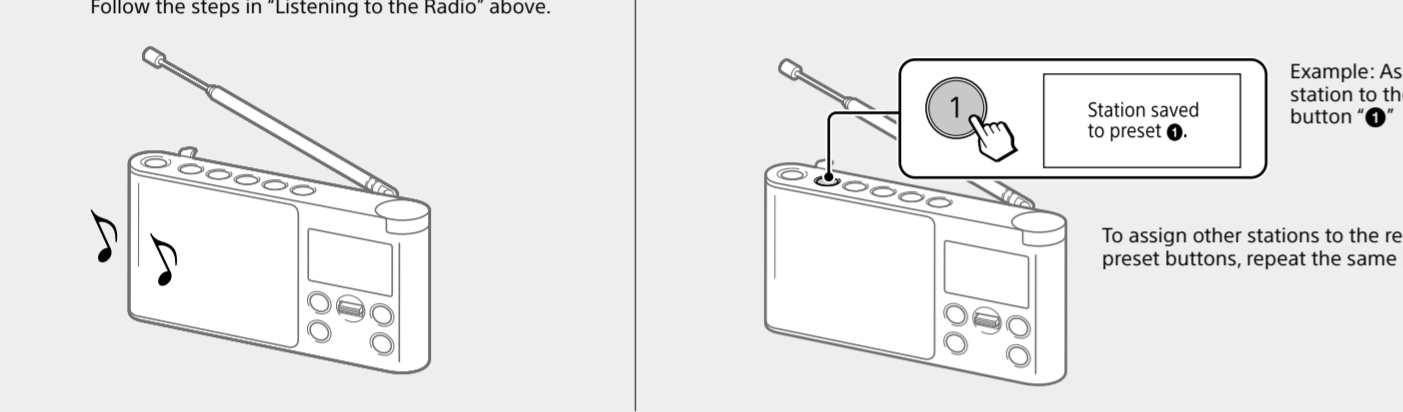
About the FM auto tune process

You can cancel the FM auto tune process that starts after the FM function is selected for the first time. However, if you want to tune to stations by station list, you will need to perform FM auto tune. For details on how to perform FM auto tune later, see 'To make a new DAB/FM station list.'

Assigning Stations to the Preset Buttons

1 Tune to the station you want to preset.

2 Press and hold the desired preset button (1 - 5) until 'Station saved to preset x.' appears on the display.



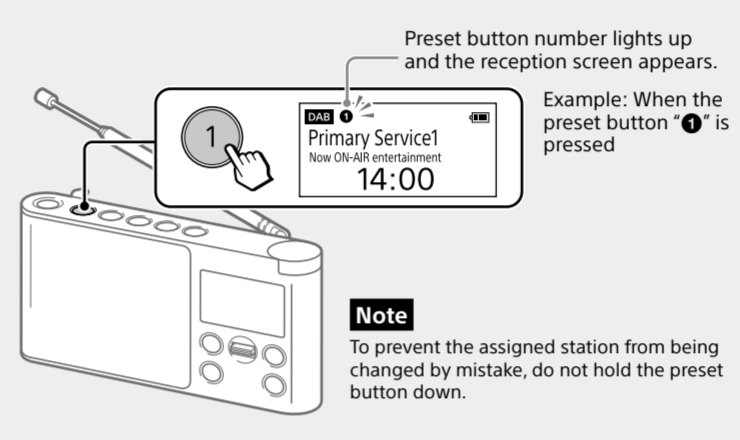
Assign your favourite stations to the 5 preset buttons. You can assign up to 5 stations each for DAB and FM functions.

To change button assignment

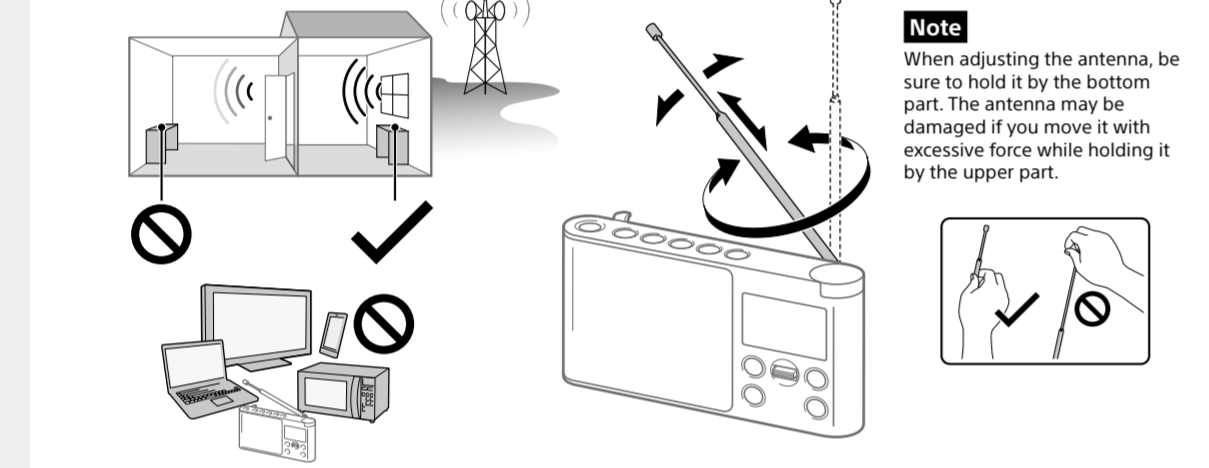
1 Tune to a new station. 2 Press and hold the preset button you want to change until 'Station saved to preset x.' appears on the display. The previously assigned station on the selected button will be replaced by the new one.

Listening to an Assigned Station

Press the desired preset button (1 - 5).

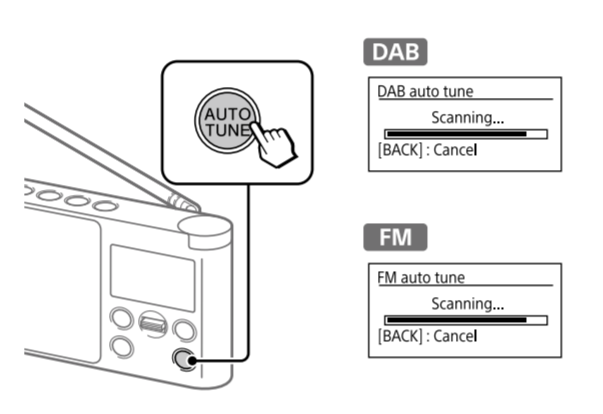


To improve DAB/FM radio reception



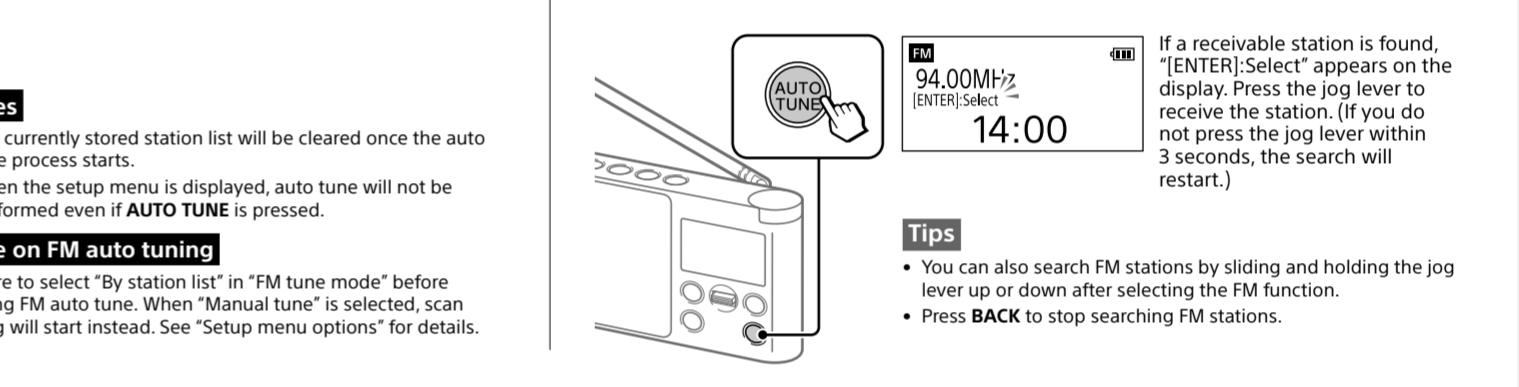
To make a new DAB/FM station list

If you have moved to another region, perform DAB and FM auto tunes again. Select the DAB or FM function, then press AUTO TUNE.

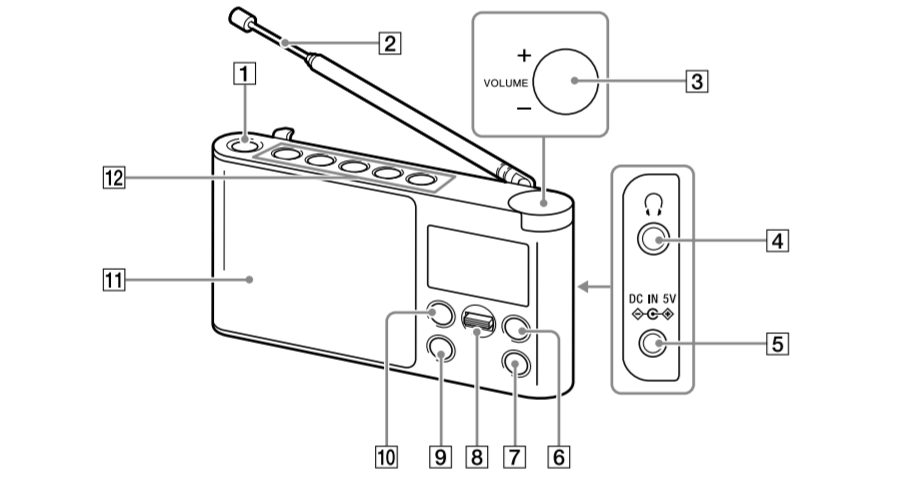


To search FM stations (scan tuning)

You can search receivable FM stations in 0.05 MHz steps. Select the FM function, then press AUTO TUNE. Be sure to select 'Manual tune' in 'FM tune mode' (See 'Setup menu options.') before using this function.

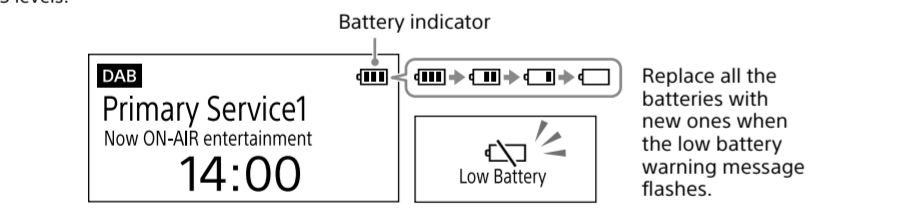


Guide to parts and controls



- 1 [power] button
2 Antenna
3 Volume control
4 [headphones] jack
5 DC IN jack
6 DAB/FM button
7 AUTO TUNE button
8 Jog lever
9 BACK button
10 MENU button
11 SPEAKER
12 Preset buttons

Battery indicator



Sleep

The radio automatically turns off after a set time has elapsed. Select the desired timer setting (minutes) from the following: Off (deactivated)/15min./30min./45min./60 min.

Information DAB

Displays information for the station to which you are listening. Slide the jog lever up or down to scroll through the following information: Channel: Channel and frequency (See the DAB frequency table in 'Specifications.') Multiplex name: Ensemble label (up to 16 characters long) Service name: Station name PTY: PTY label (See 'PTY (programme type)' in 'Specifications.') Bit rate: Bit rate Signal level: Displays the signal level for the DAB station to which you are listening, ranging from 0 (no signal) to 100 (maximum signal).

FM tune mode FM

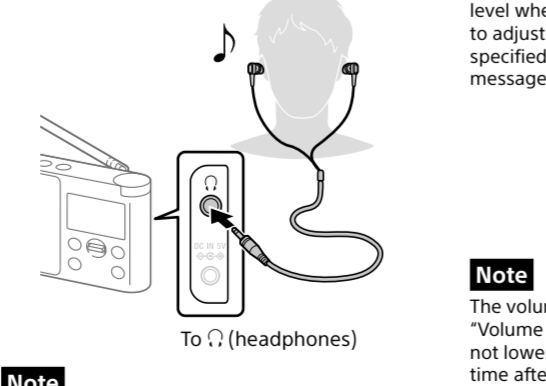
Select the tuning mode for FM. By station list: You can select the desired station from the list of FM stations stored by auto tune. When selecting this option, the display will change to the FM station list. Select the desired station from the list.

Edit FM station list FM

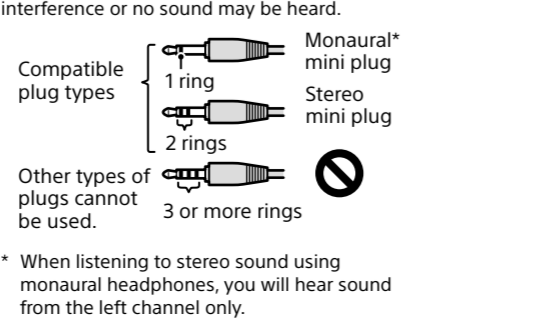
You can edit the FM station list. Get FM station name: Perform this operation when you want to receive RDS information such as station names. Select 'OK' to start scanning for RDS data. Notes: Set 'FM tune mode' to 'By station list' before you perform this operation.

Listening through headphones

Connect headphones that have a stereo or monoaural mini plug (not supplied).



When connecting headphones to the unit, use headphones with a stereo (3-pole) or monoaural (2-pole) mini plug. If you use headphones with another type of plug, there may be noise interference or no sound may be heard.



Delete FM station

1 Slide the jog lever up or down to select the station you want to delete, and then press the lever. 2 Slide the jog lever up or down to 'OK,' and then press the jog lever.

Add FM station

When listening to a manually tuned station, you can add the station to the FM station list. Select 'OK' to add the station to the list. Be sure to set 'FM tune mode' to 'Manual tune' before using this option.

Backlight

Auto: The backlight will turn off automatically if no operation is performed for 30 seconds. Always ON: The backlight will be on all the time.

Time

Set time: 'Auto [DAB]' is set by default. This enables the clock to synchronize with the DAB data being received. Select 'Time setting' to set the clock manually using the jog lever. 12H/24H: Select the clock display mode, 12-hour clock or 24-hour clock.

Beep

Select 'On' to activate the beep sound when you operate the radio.

DAB manual tune DAB

If DAB reception by DAB auto tune is poor, try manual tuning. Slide the jog lever up or down to select the desired DAB channel, then press the lever.

Initialize

Select 'OK' to initialize the radio to the factory default settings. All settings, DAB and FM station lists and assignment information on the preset buttons will be deleted.

About RDS Features

What is RDS?

Introduced by the European Broadcasting Union (EBU) in 1987, the Radio Data System (RDS) allows information such as station names to be received via the 57 kHz sub-carrier signal of FM broadcasts. However, the availability of RDS data varies depending on the area. It therefore may not be always possible to receive RDS information. Using the RDS functions This radio supports the following RDS functions.

CAUTION

Risk of explosion if the battery is replaced by an incorrect type. The latest EU Importer Information This product has been manufactured by or on behalf of Sony Corporation. EU Importer: Sony Europe B.V.

Precautions

- Operate the unit only on the power sources specified in 'Specifications.' For battery operation, it is recommended that you use four LR6 (size AA) alkaline batteries. Do not use any other type of AC adaptor. Failure to use the supplied AC adaptor may cause the unit to malfunction, as the polarity of the plugs of other manufacturers may be different. Do not mix an old battery with a new one or mix different type of batteries. When you are not going to use the unit for a long time, remove the batteries to avoid damage from battery leakage and corrosion. Check if the batteries are inserted in the correct orientation (⊕ and ⊖) when the radio does not turn on after battery replacement. Batteries have a recommended use-by date for proper use. When using expired batteries, battery life will be extremely short. Check the use-by date on the batteries and if they are expired, replace them with new ones. Make sure not to splash water on the unit. This unit is not waterproof. Under certain circumstances, especially when the air is very dry, it is not uncommon to experience a discharge of static electricity, or shock, when your body comes in contact with another object, in this case the ear buds touching your ear(s). The energy from this natural discharge is extremely small and is not emitted by your product but rather a natural environmental occurrence. Listening at high volume levels over extended periods of time may harm your hearing. Be particularly careful when listening through headphones. Sudden loud output may harm your ears. Increase the volume gradually. Be particularly careful when listening through headphones. Do not use headphones while walking, driving a car or motorcycle, cycling, etc. A traffic accident may result. Do not use headphones in situations where being unable to hear ambient sound is dangerous, such as at railroad crossings, on train station platforms, and at construction sites. Excessive sound pressure from earphones and headphones can cause hearing loss.

If you have any questions or problems concerning your unit, please consult your nearest Sony dealer.

RDS function Description

Table with 2 columns: RDS function, Description. Includes Station name display, RT (radio text), and FM auto tune.

Troubleshooting

Should any problem persist after you have made the following checks, consult your nearest Sony dealer.

Display is dim, or no indication is displayed.

The radio is being used in extremely high or low temperatures or in a place with excessive moisture.

Very weak or interrupted sound, or unsatisfactory reception.

- If you are in a building, listen near a window. Extend the antenna and adjust the length and the angle for best reception. See 'To improve DAB/FM radio reception' for details. If a mobile phone is placed close to the radio, a loud noise may be heard from the radio. Keep the phone away from the radio.

Battery gets exhausted very quickly.

Check the estimated battery life displayed in 'Specifications' and be sure to turn off the radio when not using it. A desired station cannot be received when a preset button is pressed. You may have held down the preset button to which the station was assigned, causing the station to be replaced by a new one. Assign the desired station again. Preset buttons cannot be used when the setup menu is displayed.

Messages

Low Battery (flashes, and the power is turned off)

The batteries are exhausted. Replace all the batteries with new ones.

No preset

No station in the selected band (DAB or FM) has been preset to the pressed button.

Specifications

Frequency range: DAB (Band-III): 174.928 MHz - 239.200 MHz FM: 87.5 MHz - 108 MHz (0.05 MHz step) Intermediate frequency: DAB (Band-III): 2.048 MHz FM: 1.943 MHz

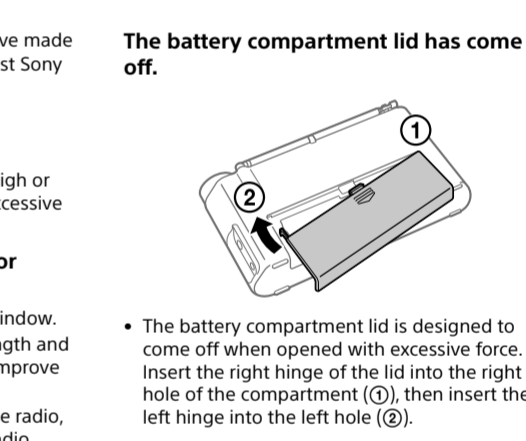
DAB (Band-III) frequency table (MHz)

Table with 4 columns: Channel, Frequency, Channel, Frequency. Lists DAB channels from 5A to 9D.

Speaker: Approx. 80 mm dia., 4 Ω, monoaural Audio power output: 650 mW Output: [headphones] jack (ø 3.5 mm, stereo mini jack) Power requirements: 6 V DC, four LR6 (size AA) alkaline batteries

External power source: DC IN 5 V 0.5 A Battery life (JEITA): Approx. 25 hours for DAB, 27 hours for FM (Using Sony (LR6SG) alkaline batteries) Approx. 10 hours for DAB, 11 hours for FM (Using Sony (NH-AA) Ni-MH 1,000 mAh batteries) Dimensions: Approx. 180 mm x 95 mm x 36 mm (W/H/D) excl. projecting parts and controls Mass: Approx. 430 g incl. batteries

The battery compartment lid has come off.



If maintenance service is performed

All user-configured settings, such as preset radio stations, the timer settings, and the clock, may be initialized. Please note your settings in case you need to configure them again.

Service not available

The selected station or service is currently not broadcasting.

PTY (programme type)

This function indicates services in programme type, such as News or Sports, transmitted in the DAB. If the service does not transmit the programme type, 'No PTY' appears.

Table with 2 columns: Programme type, Display. Lists various programme types and their corresponding display indicators.

Design and specifications are subject to change without notice.

