

**SONY**

## Wireless Stereo Headset

## Casque stéréo sans fil

## Auriculares estéreo inalámbricos

## Mini Wireless

## WH-H800

## English

## CAUTION: Risk of Fire and Burns. Do Not Open, Crush, Heat Above 140°F or Incinerate.

## FOR UNITED STATES CUSTOMERS. NOT APPLICABLE IN CANADA, INCLUDING IN THE PROVINCE OF QUEBEC.

## POUR LES CONSOMMATEURS AUX ÉTATS-UNIS. NON APPLICABLE AU CANADA, Y COMPRIS LA PROVINCE DE QUÉBEC.

This device complies with Part 15 of the FCC Rules. Operation is subject to the following two conditions: (1) this device may not cause harmful interference, and (2) this device must accept any interference received, including interference that may cause undesired operation.

You are cautioned that any changes or modifications not expressly approved in this manual could void your authority to operate this equipment.

This equipment must not be co-located or operated in conjunction with any other antenna or transmitter.

**Note**
This equipment has been tested and found to comply with the limits for a Class B digital device, pursuant to Part 15 of the FCC Rules. These limits are designed to provide reasonable protection against harmful interference in a residential installation. This equipment generates, uses and can radiate radio frequency energy and, if not installed and used in accordance with the instructions, may cause harmful interference to radio communications. However, there is no guarantee that interference will not occur in a particular installation. If this equipment does cause harmful interference to radio or television

reception, which can be determined by turning the equipment off and on, the user is encouraged to try to correct the interference by one or more of the following measures:

– Reorient or relocate the receiving antenna.
– Increase the separation between the equipment and receiver.
– Connect the equipment into an outlet on a circuit different from that to which the receiver is connected.
– Consult the dealer or an experienced radio/TV technician for help.

This device complies with Industry Canada’s licence-exempt RSSs. Operation is subject to the following two conditions:
(1) This device may not cause interference; and
(2) This device must accept any interference, including interference that may cause undesired operation of the device.

This equipment complies with FCC/IC radiation exposure limits set forth for an uncontrolled environment and meets the FCC radio frequency (RF) Exposure Guidelines and RSS-102 of the IC radio frequency (RF) Exposure rules. This equipment has very low levels of RF energy that is deemed to comply without testing of specific absorption rate (SAR).

The LDAC™ name and logo is a trademark of Sony Corporation.

The Bluetooth® word mark and logos are registered trademarks owned by the Bluetooth SIG, Inc. and any use of such marks by Sony Corporation is under license.

The N-Mark is a trademark or registered trademark of NFC Forum, Inc. in the United States and in other countries.

Windows is a registered trademark or trademark of Microsoft Corporation in the United States and/or other countries.

Apple, iPhone, iPod, iPod touch, macOS and Mac are trademarks of Apple Inc., registered in the U.S. and other countries.

Use of the Made for Apple badge means that an accessory has been designed to connect specifically to the Apple product(s) identified in the badge, and has been certified by the developer to meet Apple performance standards. Apple is not responsible for the operation of this device or its compliance with safety and regulatory standards.

Qualcomm® is a trademark of Qualcomm Incorporated, registered in the United States and other countries, used with permission. Qualcomm aptX™ audio is a trademark of Qualcomm Technologies International, Ltd., registered in the United States and other countries, used with permission.

Android is a trademark of Google LLC.

Other trademarks and trade names are those of their respective owners.

Connection with all BLUETOOTH devices cannot be guaranteed.

– A device featuring BLUETOOTH function is required to conform to the BLUETOOTH standard specified by Bluetooth SIG, Inc. and be authenticated.
– Even if the connected device conforms to the above mentioned BLUETOOTH standard, some devices may not be connected or work correctly, depending on the features or specifications of the device.

– While talking on the phone hands free, noise may occur, depending on the device or communication environment.

Depending on the device to be connected, it may require some time to start communications.

**If sound skips frequently during playback**

The situation may be improved by setting the sound quality mode to “priority on stable connection.” For details, refer to the Help Guide.
The situation may be improved by changing the wireless playback quality settings or fixing the wireless playback mode to SBC on the transmitting device. For details, refer to the operating instructions supplied with the transmitting device.

If you are using a smartphone, the situation may be improved by shutting down unnecessary applications or rebooting the smartphone.
The situation may be improved by setting the sound quality mode to “priority on stable connection.” For details, refer to the Help Guide.
The situation may be improved by changing the wireless playback quality settings or fixing the wireless playback mode to SBC on the transmitting device. For details, refer to the operating instructions supplied with the transmitting device.

– Do not place this unit in a place exposed to humidity, dust, soot or steam, or subject to direct sunlight. Do not leave the unit in a car for a long time. It may cause a malfunction.
– Using the BLUETOOTH device may not function on mobile phones, depending on radio wave conditions and location where the equipment is being used.
– High volume may affect your hearing.
– For traffic safety, do not use while driving or cycling.
– Do not use the unit in places where it would be dangerous if you are unable to hear ambient sound, such as at railroad crossings, train station platforms, and construction sites.
– Do not put weight or pressure on this unit as it may cause the unit to deform during long storage.

Do not subject the unit to excessive shock. Clean the unit with a soft dry cloth. Do not expose the unit to water. The unit is not waterproof. Remember to follow the precautions below.

– Be careful not to drop the unit into a sink or other container filled with water.
– Do not use the unit in humid locations or bad weather, such as in the rain or snow.
– Do not get the unit wet.
– If you touch the unit with wet hands, or put the unit in a damp article of clothing, the unit may get wet and this may cause a malfunction of the unit.

If you experience discomfort after using the unit, stop using the unit immediately. The earpads may deteriorate due to longterm storage or use.
If you have any questions or problems concerning this unit that are not covered in this manual, please consult your nearest Sony dealer.

**Optional replacement earpads can be ordered from your nearest authorized Sony retailer or www.sony.com.**

You are cautioned that any changes or modifications not expressly approved in this manual could void your authority to operate this equipment.

**Location of the serial number label**

**Receiver**
**Type:** Closed, Dynamic
**Driver unit:** 40 mm
**Frequency response:** 5 Hz - 40,000 Hz (JEITA)
**Impedance:** 18 Ω (1 kHz) (when connecting via the headphone cable)
**Sensitivity:** 98 dB/mW (when connecting via the headphone cable)

**Microphone**
**Type:** Electret condenser
**Directivity:** Omni directional
**Effective frequency range:** 50 Hz - 8,000 Hz

**System requirements for battery charge using USB**
(As of August 2017)
Personal Computer with pre-installed with any of the following operating systems and USB port:
**Operating Systems** (when using Windows)
Windows® 10 Home / Windows® 10 Pro
Windows® 8.1 / Windows® 8.1 Pro
Windows® 8 / Windows® 8 Pro
Windows® 7
Home Basic / Home Premium / Professional / Ultimate

(when using Mac)
macOS (version 10.9 or later)

Design and specifications are subject to change without notice.

unit from the iPhone or computer, and then pair them again.

**Others**
• Be careful not to catch your finger in the unit when folding.
• When you use the unit as wired headphones, use the supplied headphone cable only. Make sure that the headphone cable is firmly inserted.
• Do not place this unit in a place exposed to humidity, dust, soot or steam, or subject to direct sunlight. Do not leave the unit in a car for a long time. It may cause a malfunction.
• Using the BLUETOOTH device may not function on mobile phones, depending on radio wave conditions and location where the equipment is being used.
• High volume may affect your hearing.
• For traffic safety, do not use while driving or cycling.
• Do not use the unit in places where it would be dangerous if you are unable to hear ambient sound, such as at railroad crossings, train station platforms, and construction sites.
• Do not put weight or pressure on this unit as it may cause the unit to deform during long storage.
• Do not subject the unit to excessive shock. Clean the unit with a soft dry cloth. Do not expose the unit to water. The unit is not waterproof. Remember to follow the precautions below.

– Be careful not to drop the unit into a sink or other container filled with water.
– Do not use the unit in humid locations or bad weather, such as in the rain or snow.
– Do not get the unit wet.
– If you touch the unit with wet hands, or put the unit in a damp article of clothing, the unit may get wet and this may cause a malfunction of the unit.

If you experience discomfort after using the unit, stop using the unit immediately. The earpads may deteriorate due to longterm storage or use.
If you have any questions or problems concerning this unit that are not covered in this manual, please consult your nearest Sony dealer.

**Optional replacement earpads can be ordered from your nearest authorized Sony retailer or www.sony.com.**

You are cautioned that any changes or modifications not expressly approved in this manual could void your authority to operate this equipment.

**Location of the serial number label**

**Receiver**
**Type:** Closed, Dynamic
**Driver unit:** 40 mm
**Frequency response:** 5 Hz - 40,000 Hz (JEITA)
**Impedance:** 18 Ω (1 kHz) (when connecting via the headphone cable)
**Sensitivity:** 98 dB/mW (when connecting via the headphone cable)

**Microphone**
**Type:** Electret condenser
**Directivity:** Omni directional
**Effective frequency range:** 50 Hz - 8,000 Hz

**System requirements for battery charge using USB**
(As of August 2017)
Personal Computer with pre-installed with any of the following operating systems and USB port:
**Operating Systems** (when using Windows)
Windows® 10 Home / Windows® 10 Pro
Windows® 8.1 / Windows® 8.1 Pro
Windows® 8 / Windows® 8 Pro
Windows® 7
Home Basic / Home Premium / Professional / Ultimate

(when using Mac)
macOS (version 10.9 or later)

Design and specifications are subject to change without notice.

Apple, iPhone, iPod, iPod touch, macOS and Mac are trademarks of Apple Inc., registered in the U.S. and other countries.

Use of the Made for Apple badge means that an accessory has been designed to connect specifically to the Apple product(s) identified in the badge, and has been certified by the developer to meet Apple performance standards. Apple is not responsible for the operation of this device or its compliance with safety and regulatory standards.

Qualcomm® is a trademark of Qualcomm Incorporated, registered in the United States and other countries, used with permission. Qualcomm aptX™ audio is a trademark of Qualcomm Technologies International, Ltd., registered in the United States and other countries, used with permission.

Android is a trademark of Google LLC.

Other trademarks and trade names are those of their respective owners.

Connection with all BLUETOOTH devices cannot be guaranteed.

– A device featuring BLUETOOTH function is required to conform to the BLUETOOTH standard specified by Bluetooth SIG, Inc. and be authenticated.
– Even if the connected device conforms to the above mentioned BLUETOOTH standard, some devices may not be connected or work correctly, depending on the features or specifications of the device.

Depending on the device to be connected, it may require some time to start communications.

**If sound skips frequently during playback**

Connection with all BLUETOOTH devices cannot be guaranteed.

– A device featuring BLUETOOTH function is required to conform to the BLUETOOTH standard specified by Bluetooth SIG, Inc. and be authenticated.
– Even if the connected device conforms to the above mentioned BLUETOOTH standard, some devices may not be connected or work correctly, depending on the features or specifications of the device.

– While talking on the phone hands free, noise may occur, depending on the device or communication environment.

Depending on the device to be connected, it may require some time to start communications.

**If sound skips frequently during playback**

The situation may be improved by setting the sound quality mode to “priority on stable connection.” For details, refer to the Help Guide.
The situation may be improved by changing the wireless playback quality settings or fixing the wireless playback mode to SBC on the transmitting device. For details, refer to the operating instructions supplied with the transmitting device.

If you are using a smartphone, the situation may be improved by shutting down unnecessary applications or rebooting the smartphone.
The situation may be improved by setting the sound quality mode to “priority on stable connection.” For details, refer to the Help Guide.
The situation may be improved by changing the wireless playback quality settings or fixing the wireless playback mode to SBC on the transmitting device. For details, refer to the operating instructions supplied with the transmitting device.

– Do not place this unit in a place exposed to humidity, dust, soot or steam, or subject to direct sunlight. Do not leave the unit in a car for a long time. It may cause a malfunction.
– Using the BLUETOOTH device may not function on mobile phones, depending on radio wave conditions and location where the equipment is being used.
– High volume may affect your hearing.
– For traffic safety, do not use while driving or cycling.
– Do not use the unit in places where it would be dangerous if you are unable to hear ambient sound, such as at railroad crossings, train station platforms, and construction sites.
– Do not put weight or pressure on this unit as it may cause the unit to deform during long storage.
• Do not subject the unit to excessive shock. Clean the unit with a soft dry cloth. Do not expose the unit to water. The unit is not waterproof. Remember to follow the precautions below.

– Be careful not to drop the unit into a sink or other container filled with water.
– Do not use the unit in humid locations or bad weather, such as in the rain or snow.
– Do not get the unit wet.
– If you touch the unit with wet hands, or put the unit in a damp article of clothing, the unit may get wet and this may cause a malfunction of the unit.

If you experience discomfort after using the unit, stop using the unit immediately. The earpads may deteriorate due to longterm storage or use.
If you have any questions or problems concerning this unit that are not covered in this manual, please consult your nearest Sony dealer.

**Optional replacement earpads can be ordered from your nearest authorized Sony retailer or www.sony.com.**

You are cautioned that any changes or modifications not expressly approved in this manual could void your authority to operate this equipment.

**Location of the serial number label**

**Receiver**
**Type:** Closed, Dynamic
**Driver unit:** 40 mm
**Frequency response:** 5 Hz - 40,000 Hz (JEITA)
**Impedance:** 18 Ω (1 kHz) (when connecting via the headphone cable)
**Sensitivity:** 98 dB/mW (when connecting via the headphone cable)

**Microphone**
**Type:** Electret condenser
**Directivity:** Omni directional
**Effective frequency range:** 50 Hz - 8,000 Hz

**System requirements for battery charge using USB**
(As of August 2017)
Personal Computer with pre-installed with any of the following operating systems and USB port:
**Operating Systems** (when using Windows)
Windows® 10 Home / Windows® 10 Pro
Windows® 8.1 / Windows® 8.1 Pro
Windows® 8 / Windows® 8 Pro
Windows® 7
Home Basic / Home Premium / Professional / Ultimate

(when using Mac)
macOS (version 10.9 or later)

Design and specifications are subject to change without notice.

Apple, iPhone, iPod, iPod touch, macOS and Mac are trademarks of Apple Inc., registered in the U.S. and other countries.

Use of the Made for Apple badge means that an accessory has been designed to connect specifically to the Apple product(s) identified in the badge, and has been certified by the developer to meet Apple performance standards. Apple is not responsible for the operation of this device or its compliance with safety and regulatory standards.

Qualcomm® is a trademark of Qualcomm Incorporated, registered in the United States and other countries, used with permission. Qualcomm aptX™ audio is a trademark of Qualcomm Technologies International, Ltd., registered in the United States and other countries, used with permission.

Android is a trademark of Google LLC.

Other trademarks and trade names are those of their respective owners.

Connection with all BLUETOOTH devices cannot be guaranteed.

– A device featuring BLUETOOTH function is required to conform to the BLUETOOTH standard specified by Bluetooth SIG, Inc. and be authenticated.
– Even if the connected device conforms to the above mentioned BLUETOOTH standard, some devices may not be connected or work correctly, depending on the features or specifications of the device.

– While talking on the phone hands free, noise may occur, depending on the device or communication environment.

Depending on the device to be connected, it may require some time to start communications.

**If sound skips frequently during playback**

The situation may be improved by setting the sound quality mode to “priority on stable connection.” For details, refer to the Help Guide.
The situation may be improved by changing the wireless playback quality settings or fixing the wireless playback mode to SBC on the transmitting device. For details, refer to the operating instructions supplied with the transmitting device.

If you are using a smartphone, the situation may be improved by shutting down unnecessary applications or rebooting the smartphone.
The situation may be improved by setting the sound quality mode to “priority on stable connection.” For details, refer to the Help Guide.
The situation may be improved by changing the wireless playback quality settings or fixing the wireless playback mode to SBC on the transmitting device. For details, refer to the operating instructions supplied with the transmitting device.

– Do not place this unit in a place exposed to humidity, dust, soot or steam, or subject to direct sunlight. Do not leave the unit in a car for a long time. It may cause a malfunction.
– Using the BLUETOOTH device may not function on mobile phones, depending on radio wave conditions and location where the equipment is being used.
– High volume may affect your hearing.
– For traffic safety, do not use while driving or cycling.
– Do not use the unit in places where it would be dangerous if you are unable to hear ambient sound, such as at railroad crossings, train station platforms, and construction sites.
– Do not put weight or pressure on this unit as it may cause the unit to deform during long storage.
• Do not subject the unit to excessive shock. Clean the unit with a soft dry cloth. Do not expose the unit to water. The unit is not waterproof. Remember to follow the precautions below.

– Be careful not to drop the unit into a sink or other container filled with water.
– Do not use the unit in humid locations or bad weather, such as in the rain or snow.
– Do not get the unit wet.
– If you touch the unit with wet hands, or put the unit in a damp article of clothing, the unit may get wet and this may cause a malfunction of the unit.

If you experience discomfort after using the unit, stop using the unit immediately. The earpads may deteriorate due to longterm storage or use.
If you have any questions or problems concerning this unit that are not covered in this manual, please consult your nearest Sony dealer.

**Optional replacement earpads can be ordered from your nearest authorized Sony retailer or www.sony.com.**

You are cautioned that any changes or modifications not expressly approved in this manual could void your authority to operate this equipment.

**Location of the serial number label**

**Receiver**
**Type:** Closed, Dynamic
**Driver unit:** 40 mm
**Frequency response:** 5 Hz - 40,000 Hz (JEITA)
**Impedance:** 18 Ω (1 kHz) (when connecting via the headphone cable)
**Sensitivity:** 98 dB/mW (when connecting via the headphone cable)

**Microphone**
**Type:** Electret condenser
**Directivity:** Omni directional
**Effective frequency range:** 50 Hz - 8,000 Hz

**System requirements for battery charge using USB**
(As of August 2017)
Personal Computer with pre-installed with any of the following operating systems and USB port:
**Operating Systems** (when using Windows)
Windows® 10 Home / Windows® 10 Pro
Windows® 8.1 / Windows® 8.1 Pro
Windows® 8 / Windows® 8 Pro
Windows® 7
Home Basic / Home Premium / Professional / Ultimate

(when using Mac)
macOS (version 10.9 or later)

Design and specifications are subject to change without notice.

Apple, iPhone, iPod, iPod touch, macOS and Mac are trademarks of Apple Inc., registered in the U.S. and other countries.

Use of the Made for Apple badge means that an accessory has been designed to connect specifically to the Apple product(s) identified in the badge, and has been certified by the developer to meet Apple performance standards. Apple is not responsible for the operation of this device or its compliance with safety and regulatory standards.

Qualcomm® is a trademark of Qualcomm Incorporated, registered in the United States and other countries, used with permission. Qualcomm aptX™ audio is a trademark of Qualcomm Technologies International, Ltd., registered in the United States and other countries, used with permission.

Android is a trademark of Google LLC.

Other trademarks and trade names are those of their respective owners.

Connection with all BLUETOOTH devices cannot be guaranteed.

– A device featuring BLUETOOTH function is required to conform to the BLUETOOTH standard specified by Bluetooth SIG, Inc. and be authenticated.
– Even if the connected device conforms to the above mentioned BLUETOOTH standard, some devices may not be connected or work correctly, depending on the features or specifications of the device.

– While talking on the phone hands free, noise may occur, depending on the device or communication environment.

Depending on the device to be connected, it may require some time to start communications.

**If sound skips frequently during playback**

The situation may be improved by setting the sound quality mode to “priority on stable connection.” For details, refer to the Help Guide.
The situation may be improved by changing the wireless playback quality settings or fixing the wireless playback mode to SBC on the transmitting device. For details, refer to the operating instructions supplied with the transmitting device.

If you are using a smartphone, the situation may be improved by shutting down unnecessary applications or rebooting the smartphone.
The situation may be improved by setting the sound quality mode to “priority on stable connection.” For details, refer to the Help Guide.
The situation may be improved by changing the wireless playback quality settings or fixing the wireless playback mode to SBC on the transmitting device. For details, refer to the operating instructions supplied with the transmitting device.

– Do not place this unit in a place exposed to humidity, dust, soot or steam, or subject to direct sunlight. Do not leave the unit in a car for a long time. It may cause a malfunction.
– Using the BLUETOOTH device may not function on mobile phones, depending on radio wave conditions and location where the equipment is being used.
– High volume may affect your hearing.
– For traffic safety, do not use while driving or cycling.
– Do not use the unit in places where it would be dangerous if you are unable to hear ambient sound, such as at railroad crossings, train station platforms, and construction sites.
– Do not put weight or pressure on this unit as it may cause the unit to deform during long storage.
• Do not subject the unit to excessive shock. Clean the unit with a soft dry cloth. Do not expose the unit to water. The unit is not waterproof. Remember to follow the precautions below.

– Be careful not to drop the unit into a sink or other container filled with water.
– Do not use the unit in humid locations or bad weather, such as in the rain or snow.
– Do not get the unit wet.
– If you touch the unit with wet hands, or put the unit in a damp article of clothing, the unit may get wet and this may cause a malfunction of the unit.

If you experience discomfort after using the unit, stop using the unit immediately. The earpads may deteriorate due to longterm storage or use.
If you have any questions or problems concerning this unit that are not covered in this manual, please consult your nearest Sony dealer.

**Optional replacement earpads can be ordered from your nearest authorized Sony retailer or www.sony.com.**

You are cautioned that any changes or modifications not expressly approved in this manual could void your authority to operate this equipment.

**Location of the serial number label**

**Receiver**
**Type:** Closed, Dynamic
**Driver unit:** 40 mm
**Frequency response:** 5 Hz - 40,000 Hz (JEITA)
**Impedance:** 18 Ω (1 kHz) (when connecting via the headphone cable)
**Sensitivity:** 98 dB/mW (when connecting via the headphone cable)

**Microphone**
**Type:** Electret condenser
**Directivity:** Omni directional
**Effective frequency range:** 50 Hz - 8,000 Hz

**System requirements for battery charge using USB**
(As of August 2017)
Personal Computer with pre-installed with any of the following operating systems and USB port:
**Operating Systems** (when using Windows)
Windows® 10 Home / Windows® 10 Pro
Windows® 8.1 / Windows® 8.1 Pro
Windows® 8 / Windows® 8 Pro
Windows® 7
Home Basic / Home Premium / Professional / Ultimate

(when using Mac)
macOS (version 10.9 or later)

Design and specifications are subject to change without notice.

Connection with all BLUETOOTH devices cannot be guaranteed.

– A device featuring BLUETOOTH function is required to conform to the BLUETOOTH standard specified by Bluetooth SIG, Inc. and be authenticated.
– Even if the connected device conforms to the above mentioned BLUETOOTH standard, some devices may not be connected or work correctly, depending on the features or specifications of the device.

– While talking on the phone hands free, noise may occur, depending on the device or communication environment.

Depending on the device to be connected, it may require some time to start communications.

**If sound skips frequently during playback**

The situation may be improved by setting the sound quality mode to “priority on stable connection.” For details, refer to the Help Guide.
The situation may be improved by changing the wireless playback quality settings or fixing the wireless playback mode to SBC on the transmitting device. For details, refer to the operating instructions supplied with the transmitting device.

If you are using a smartphone, the situation may be improved by shutting down unnecessary applications or rebooting the smartphone.
The situation may be improved by setting the sound quality mode to “priority on stable connection.” For details, refer to the Help Guide.
The situation may be improved by changing the wireless playback quality settings or fixing the wireless playback mode to SBC on the transmitting device. For details, refer to the operating instructions supplied with the transmitting device.

– Do not place this unit in a place exposed to humidity, dust, soot or steam, or subject to direct sunlight. Do not leave the unit in a car for a long time. It may cause a malfunction.
– Using the BLUETOOTH device may not function on mobile phones, depending on radio wave conditions and location where the equipment is being used.
– High volume may affect your hearing.
– For traffic safety, do not use while driving or cycling.
– Do not use the unit in places where it would be dangerous if you are unable to hear ambient sound, such as at railroad crossings, train station platforms, and construction sites.
– Do not put weight or pressure on this unit as it may cause the unit to deform during long storage.
• Do not subject the unit to excessive shock. Clean the unit with a soft dry cloth. Do not expose the unit to water. The unit is not waterproof. Remember to follow the precautions below.

– Be careful not to drop the unit into a sink or other container filled with water.
– Do not use the unit in humid locations or bad weather, such as in the rain or snow.
– Do not get the unit wet.
– If you touch the unit with wet hands, or put the unit in a damp article of clothing, the unit may get wet and this may cause a malfunction of the unit.

If you experience discomfort after using the unit, stop using the unit immediately. The earpads may deteriorate due to longterm storage or use.
If you have any questions or problems concerning this unit that are not covered in this manual, please consult your nearest Sony dealer.

**Optional replacement earpads can be ordered from your nearest authorized Sony retailer or www.sony.com.**

You are cautioned that any changes or modifications not expressly approved in this manual could void your authority to operate this equipment.

**Location of the serial number label**

**Receiver**
**Type:** Closed, Dynamic
**Driver unit:** 40 mm
**Frequency response:** 5 Hz - 40,000 Hz (JEITA)
**Impedance:** 18 Ω (1 kHz) (when connecting via the headphone cable)
**Sensitivity:** 98 dB/mW (when connecting via the headphone cable)

**Microphone**
**Type:** Electret condenser
**Directivity:** Omni directional
**Effective frequency range:** 50 Hz - 8,000 Hz

**System requirements for battery charge using USB**
(As of August 2017)
Personal Computer with pre-installed with any of the following operating systems and USB port:
**Operating Systems** (when using Windows)
Windows® 10 Home / Windows® 10 Pro
Windows® 8.1 / Windows® 8.1 Pro
Windows® 8 / Windows® 8 Pro
Windows® 7
Home Basic / Home Premium / Professional / Ultimate

(when using Mac)
macOS (version 10.9 or later)

Design and specifications are subject to change without notice.

Apple, iPhone, iPod, iPod touch, macOS and Mac are trademarks of Apple Inc., registered in the U.S. and other countries.

Use of the Made for Apple badge means that an accessory has been designed to connect specifically to the Apple product(s) identified in the badge, and has been certified by the developer to meet Apple performance standards. Apple is not responsible for the operation of this device or its compliance with safety and regulatory standards.

Qualcomm® is a trademark of Qualcomm Incorporated, registered in the United States and other countries, used with permission. Qualcomm aptX™ audio is a trademark of Qualcomm Technologies International, Ltd., registered in the United States and other countries, used with permission.

## Spécifications

### Généralités

**Système de communication** : Spécification BLUETOOTH version 4.1

**Sortie** : Spécification BLUETOOTH pour classe de puissance 2

**Portée de communication maximale** : En ligne directe, environ 10 m (30 pi)<sup>1)</sup>

**Bande de fréquence** : Bande 2,4 GHz (2,4000 GHz – 2,4835 GHz)

**Perfiles BLUETOOTH compatibles**<sup>2)</sup> ; A2DP (Advanced Audio Distribution Profile) AVRCP (Audio Video Remote Control Profile) HFP (Hands-free Profile) HSP (Headset Profile)

**Codex pris en charge**<sup>3)</sup> : SBC<sup>4)</sup>, AAC<sup>5)</sup>, LDAC, aptX™, aptX HD

**Méthode de protection de contenu prise en charge** : SCMS-T

**Plage de transmission (A2DP)** : 20 Hz – 20 000 Hz (fréquence d'échantillonnage de 44,1 kHz) 20 Hz – 40 000 Hz (fréquence d'échantillonnage de 96 kHz LDAC, 990 kbit/s)

**Éléments inclus** :

Casque stéreo sans fil (1)
Câble micro-USB (environ 50 cm (19 3/4 po)) (1)
Câble de casque d'écoute (environ 1,2 m (47 1/4 po)) (1)
Pochette de transport (1)
Manuel de référence (ce feuillet) (1)
Manuel d'instructions (1)
Autres documents (1 ensemble)

<sup>1)</sup> La portée réelle varie en fonction de nombreux facteurs, tels que la présence d'obstacles entre les périphériques, les champs magnétiques autour des fours à micro-ondes, l'électricité statique, la sensibilité de la réception, les performances de l'antenne, le système d'exploitation ou les applications logicielles, etc.

<sup>2)</sup> Les perfiles standard BLUETOOTH indiquent la fonction des communications BLUETOOTH entre les périphériques.

<sup>3)</sup> Codex : Format de conversion et compression du signal audio

<sup>4)</sup> Codex de sous-bande

<sup>5)</sup> Codage audio avancé

### Casque stéreo sans fil

**Source d'alimentation** :

3,7 V CC : Batterie rechargeable au lithium-ion intégrée.

5 V CC : Lors du chargement par USB

**Masse** : Environ 180 g (6,35 oz)

**Température de fonctionnement** : 0 °C à 40 °C (32 °F à 104 °F)

**Nombre d'heures d'utilisation** :

Lors de la connexion via le périphérique BLUETOOTH

Durée de lecture musicale :

Max. 24 heures

Durée de communication :

Max. 20 heures

Durée de veille : Max. 250 heures

Remarque : Le nombre d'heures d'utilisation peut être inférieur, selon le codex et les conditions d'utilisation.

**Durée de chargement** :

Environ 4 heures

(Environ 90 minutes de lecture musicale sont possibles après un chargement de 10 minutes.)

Remarque : La durée de chargement et le nombre d'heures d'utilisation peuvent être différents selon les conditions d'utilisation.

**Température de chargement** : 5 °C à 35 °C (41 °F à 95 °F)

#### Récepteur

**Type** : fermé, dynamique

**Transducteur** : 40 mm

**Réponse en fréquence** :

5 Hz - 40 000 Hz (JEITA)

**Impédance** :

18 Ω (1 kHz) (lors de la connexion via le câble de casque d'écoute)

**Sensibilit** :

98 dB/mW (lors de la connexion via le câble de casque d'écoute)

#### Micro

**Type** : condensateur à électret

**Directivité** : omnidirectionnel

**Plage de fréquences efficace** :

50 Hz – 8 000 Hz

### Configuration requise pour la charge de la batterie via USB

(À compter d'août 2017)

Un ordinateur personnel équipé de l'un des systèmes d'exploitation suivants et d'un port USB :

#### Systèmes d'exploitation

(lors de l'utilisation de Windows)
Windows® 10 Home / Windows® 10 Pro
Windows® 8.1 / Windows® 8.1 Pro
Windows® 8 / Windows® 8 Pro
Windows® 7

Home Basic / Home Premium / Professional / Ultimate

(lors de l'utilisation d'un Mac)
macOS (version 10.9 ou plus récente)

La conception et les spécifications peuvent être modifiées sans préavis.

### Español

El nombre y el logotipo de LDAC™ son marcas comerciales de Sony Corporation.

La marca de la palabra y logotipos Bluetooth® son marcas comerciales registradas y son propiedad de Bluetooth SIG, Inc., y Sony Corporation posee licencia para utilizar cualquiera de dichas marcas.

N-Mark es una marca comercial o una marca comercial registrada de NFC Forum, Inc. en los Estados Unidos y en otros países.

Windows es una marca registrada o marca comercial de Microsoft Corporation en los Estados Unidos y otros países.

Apple, iPhone, iPod, iPod touch, macOS y Mac son marcas comerciales de Apple Inc., registradas en Estados Unidos y otros países.

El uso de la insignia Made for Apple significa que un accesorio ha sido diseñado para conectarse específicamente al producto o a los productos Apple identificados en la insignia, y ha sido certificado por el fabricante de que cumple las normas de rendimiento de Apple. Apple no se hace responsable por el funcionamiento de este dispositivo o su cumplimiento con normas de seguridad y regulatorias.

Qualcomm® es una marca comercial de Qualcomm Incorporated registrada en los Estados Unidos y otros países y utilizada bajo permiso autorizado. Qualcomm aptX™ audio es una marca comercial de Qualcomm Technologies International, Ltd. registrada en los Estados Unidos y utilizada bajo permiso autorizado.

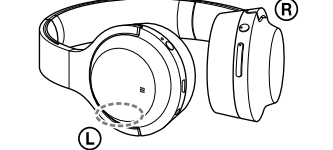
Android es una marca registrada de Google LLC.

Las demás marcas y nombres comerciales pertenecen a sus respectivos propietarios.

## Precauciones

**Sobre las comunicaciones BLUETOOTH**

• La tecnología inalámbrica BLUETOOTH opera dentro de un rango de alrededor de 10 m. El alcance máximo de la comunicación puede variar dependiendo de los obstáculos (cuerpo humano, metales, paredes, etc.) o el entorno electromagnético.
• La antena está integrada en la unidad tal como se ilustra en la línea punteada. La sensibilidad de las comunicaciones BLUETOOTH mejorará si se gira la dirección de la antena integrada al dispositivo BLUETOOTH conectado. Cuando hay obstáculos entre la antena del dispositivo conectado y la antena integrada en esta unidad, pueden ocurrir ruidos o pérdidas de audio, o se pueden deshabilitar las comunicaciones.



- Las comunicaciones BLUETOOTH se pueden deshabilitar, o puede ocurrir ruido o pérdida de audio en las siguientes condiciones:
  - Hay un cuerpo humano entre la unidad y el dispositivo BLUETOOTH. Esta situación se puede mejorar al colocar el dispositivo BLUETOOTH de cara a la antena de la unidad.
  - Hay un obstáculo, como metales o paredes, entre la unidad y el dispositivo BLUETOOTH.
  - Un dispositivo que utiliza la frecuencia 2,4 GHz, como un dispositivo Wi-Fi, teléfono inalámbrico, u horno microondas, está en uso cerca de esta unidad.
- Debido a que los dispositivos BLUETOOTH y Wi-Fi (IEEE802.11b/g/n) utilizan la misma frecuencia (2,4 GHz), puede ocurrir una interferencia de microondas que resulte en ruido o pérdida de audio, o que se deshabiliten las comunicaciones si esta unidad se utiliza cerca de un dispositivo Wi-Fi. En dicho caso, realice lo siguiente:
  - Utilice esta unidad al menos a 10 m de distancia del dispositivo Wi-Fi.
  - Si esta unidad se utiliza dentro de los 10 m de un dispositivo Wi-Fi, apague el dispositivo Wi-Fi.
  - Instale esta unidad y el dispositivo BLUETOOTH tan cerca entre sí como sea posible.
- Las microondas que se emiten desde un dispositivo BLUETOOTH pueden afectar la operación de los dispositivos médicos electrónicos. Apague esta unidad y otros

dispositivos BLUETOOTH en las siguientes ubicaciones, ya que pueden causar un accidente:

– donde haya gas inflamable presente, en un hospital, o en una estación de servicio

– cerca de puertas automáticas o una alarma contra incendios.

• Cuando se lo utiliza en el modo inalámbrico, este producto emite ondas de radio.

Cuando utilice el dispositivo en modo inalámbrico en un avión, siga las instrucciones de la tripulación respecto del uso permitido de productos en modo inalámbrico.

• Dadas las características de la tecnología inalámbrica, el sonido que se reproduce en esta unidad está retrasado con respecto a aquel que se reproduce en el dispositivo emisor. Por lo tanto, la imagen y el sonido podría estar desalineado al mirar una película o jugar un videojuego.
• Esta unidad es compatible con capacidades de seguridad que cumplen con el estándar BLUETOOTH para ofrecer una conexión segura cuando se utiliza la tecnología inalámbrica BLUETOOTH, pero la seguridad puede no ser suficiente dependiendo de los ajustes. Tenga cuidado al comunicarse utilizando la tecnología inalámbrica BLUETOOTH.

• No nos hacemos responsables por cualquier filtración de información durante las comunicaciones BLUETOOTH.

• No se puede garantizar la conexión con todos los dispositivos BLUETOOTH.

- Se necesita un dispositivo que cuente con la función BLUETOOTH para conformar el estándar BLUETOOTH especificado por Bluetooth SIG, Inc. y debe autenticarse.
  - Incluso si el dispositivo conectado conforma el estándar BLUETOOTH mencionado con anterioridad, puede ser que algunos dispositivos no se conecten o no funcionen correctamente, dependiendo de las características o especificaciones del dispositivo.
  - Pueden ocurrir ruidos mientras habla por teléfono manos libres, dependiendo del dispositivo o del entorno de comunicación.
- Puede ser necesario cierto tiempo para comenzar las comunicaciones dependiendo del dispositivo a conectar.

**Si el sonido salta con frecuencia durante la reproducción**

- La situación se puede mejorar al configurar el modo de la calidad del sonido a "prioridad con conexión estable". Para más detalles, consulte la Guía de ayuda.
- La situación se puede mejorar al cambiar los ajustes de calidad de reproducción inalámbrica o al fijar el modo de reproducción inalámbrica a SBC en el dispositivo transmisor. Para obtener más detalles, consulte las instrucciones de operación suministradas con el dispositivo transmisor.
- Si usted está utilizando un smartphone, la situación podría mejorar al cerrar las aplicaciones innecesarias o al reiniciar el smartphone.

**Cuando utilice aplicaciones de llamadas para smartphones y computadoras**

• Esta unidad admite solo llamadas entrantes normales. No se admiten aplicaciones de llamadas para smartphones y computadoras.

**Al cargar la unidad**

• Esta unidad solo se puede cargar mediante USB. Se requiere una computadora personal con un puerto USB para realizar la carga.

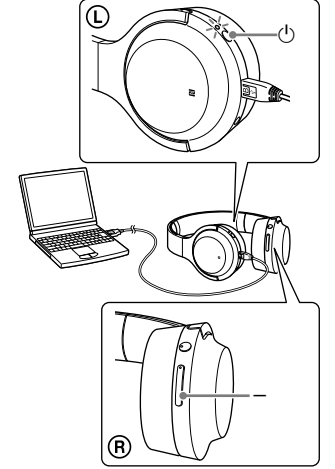
- Esta unidad no se puede encender, ni se puede utilizar la función BLUETOOTH, durante la carga.
- Puede utilizar la unidad conectando el cable de auricular suministrado, aun durante la carga.
- Si no utiliza la unidad por un largo tiempo, puede que la batería recargable no almacene la suficiente carga. La batería podrá almacenar una carga en forma adecuada tras descargarla y cargarla en forma repetida.
- Si almacena la unidad por un largo tiempo, cargue la batería una vez cada seis meses para prevenir una descarga excesiva.
- Si el plazo de tiempo que usa la unidad se vuelve extremadamente corto, se deberá reemplazar la batería recargable por una nueva. Comuníquese con su distribuidor Sony más cercano por un reemplazo de la batería.

**Nota sobre la electricidad estática**

• La electricidad estática acumulada en el cuerpo puede causar un ligero hormigueo en sus orejas. Para minimizar el efecto, utilice ropa de materiales naturales.

**Si la unidad no opera en forma adecuada**

- Reinicie la unidad.
  - Presione los botones ⇩ y ⇨ simultáneamente durante la carga. Se reiniciará la unidad. No se elimina la información de emparejamiento.



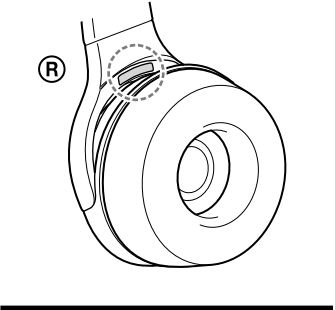
- Si el problema persiste incluso después de la operación de reinicio anterior, inicie la unidad de la siguiente manera:
  - Desconecte el cable micro-USB del puerto micro-USB y apague la unidad. Luego, mantenga presionados los botones ⇩ y ▶■ simultáneamente por más de 7 segundos. El indicador (azul) parpadea 4 veces, y la unidad se reinicia con los ajustes de fábrica. Se elimina toda la información de emparejamiento.
  - Una vez que se inicializa la unidad, puede que no se conecte a su iPhone o a su computadora. En este caso, elimine la información de emparejamiento de la unidad desde el iPhone o la computadora, y luego vuelva a emparejarlos.

**Otros**

- Tenga cuidado de no apretarse los dedos cuando guarde la unidad.
- Cuando utilice la unidad como auriculares con cable, utilice solamente el cable de auricular suministrado. Asegúrese de que el cable de auricular esté firmemente insertado.
- No coloque esta unidad en un lugar expuesto a la humedad, polvo, hollín o vapor, ni sujeto a la luz solar directa. No deje la unidad en un automóvil por un largo período de tiempo. Puede causar un mal funcionamiento.
- La utilización del dispositivo BLUETOOTH puede no funcionar en teléfonos móviles, dependiendo de las condiciones de la onda de radio y la ubicación en la que se utiliza el equipo.
- Si utiliza los auriculares a un volumen alto, puede dañar sus oídos.
- Por razones de seguridad vial, no los utilice mientras conduzca o vaya en bicicleta.
- No utilice la unidad en lugares donde podría ser peligroso si no es capaz de escuchar el sonido ambiente, como cruces de ferrocarril, plataformas de estaciones de tren y sitios en construcción.
- No ponga peso ni aplique presión sobre esta unidad ya que puede causar que la unidad se deforme durante el almacenamiento a largo plazo.
- No someta la unidad a golpes excesivos.
- Limpie la unidad con un paño suave.
- No exponga la unidad al agua. La unidad no es resistente al agua. Recuerde seguir las precauciones a continuación.
  - Tenga cuidado de no dejar caer la unidad en un lavabo u otro contenedor lleno de agua.
  - No utilice la unidad en lugares húmedos o con malas condiciones climáticas, como la lluvia o la nieve.
  - No permita que la unidad se moje.
- Si toca la unidad con las manos mojadas, o coloca la unidad sobre una prenda mojada, la unidad se puede mojar y esto puede causar un mal funcionamiento.
- Si experimenta incomodidad tras utilizar la unidad, deje de utilizarla de inmediato.
- Las almohadillas pueden deteriorarse debido al uso o almacenamiento prolongado.
- Si tiene consultas o problemas con respecto a esta unidad que no se cubren en este manual, consulte a su distribuidor Sony más cercano.

Otras almohadillas de recambio opcionales se pueden encargar al vendedor autorizado de Sony más cercano o en <a href="#">www.sony.com</a> .
---

**Ubicación de la etiqueta con número de serie**



## Modelos de iPhone/iPod compatibles

La unidad puede utilizarse únicamente con los siguientes modelos. Actualice su iPhone o Pod a la última versión del software disponible antes de usarlo.

- iPhone 7
- iPhone 7 Plus
- iPhone SE
- iPhone 6s
- iPhone 6s Plus
- iPhone 6
- iPhone 6 Plus
- iPhone 5s
- iPhone 5c
- iPhone 5
- iPod touch (6.a generación)

(A partir de agosto de 2017)

## Especificaciones

### Generales

**Sistema de comunicación**: Especificación BLUETOOTH versión 4.1

**Salida**: Especificación BLUETOOTH Clase Energética 2

**Rango máximo de comunicación**: En línea recta aprox. 10 m<sup>1)</sup>

**Banda de frecuencia**: Banda de 2,4 GHz (2,4000 GHz – 2,4835 GHz)

**Perfiles BLUETOOTH compatibles**<sup>2)</sup> : A2DP (Perfil de distribución de audio avanzada)

AVRCP (Perfil de control remoto de audio y vídeo)
HFP (Perfil de manos libres)
HSP (Perfil de auriculares)

**Códec compatibles**<sup>3)</sup> : SBC<sup>4)</sup>, AAC<sup>5)</sup>, LDAC, aptX, aptX HD

**Método de protección de contenido compatible**: SCMS-T

**Rango de transmisión (A2DP)** : 20 Hz - 20 000 Hz (Frecuencia de muestreo 44,1 kHz)
20 Hz - 40 000 Hz (Frecuencia de muestreo LDAC 96 kHz, 990 kbps)

**Artículos incluidos**:

Auricular estéreo inalámbrico (1)
Cable micro-USB (aprox. 50 cm) (1)
Cable de auricular (aprox. 1,2 m)
Bolsa de transporte (1)
Guía de referencia (este documento) (1)
Manual de instrucciones (1)
Otros documentos (1 conjunto)

<sup>1)</sup> El rango real variará dependiendo de factores como obstáculos entre los dispositivos, campos magnéticos alrededor de un horno de microondas, electricidad estática, sensibilidad de la recepción, rendimiento de la antena, sistema operativo, aplicación de software, etc.

<sup>2)</sup> Los perfiles del estándar BLUETOOTH indican la finalidad de las comunicaciones BLUETOOTH entre dispositivos.

<sup>3)</sup> Códec: Formato de compresión y conversión de señal de audio

<sup>4)</sup> Códec subbanda

<sup>5)</sup> Codificación de audio avanzada

### Auriculares estéreo inalámbricos

**Fuente de alimentación**:

cc de 3,7 V; batería recargable de iones de litio incorporada

cc de 5 V; al recargarse mediante USB

**Masa**: Aprox. 180 g

**Temperatura de funcionamiento**: de 0 °C a 40 °C

**Horas de uso**:

Al utilizar una conexión a través del dispositivo BLUETOOTH
Tiempo de reproducción: máx. 24 horas
Tiempo de comunicación: máx. 20 horas
Tiempo de espera: máx. 250 horas

Nota: Las horas de uso pueden ser más breves dependiendo del Códec y las condiciones de uso.

**Tiempo de carga**:

Aprox. 4 horas

(Alrededor de 90 minutos de reproducción de música luego de 10 minutos de carga.)

Nota: las horas de carga pueden ser distintas en función de las condiciones de uso.

**Temperatura de carga**: 5 °C a 35 °C

#### Receptor

**Tipo**: cerrado, dinámico

**Unidad auricular**: 40 mm

**Respuesta de frecuencia**: 5 Hz - 40 000 Hz (JEITA)

**Impedancia**: 18 Ω (1 kHz) (cuando se conecta por medio del cable de auricular)

**Sensibilidad**: 98 dB/mW (cuando se conecta por medio del cable de auricular)

**Micrófono**

**Tipo**: condensador de electroreto

**Directividad**: omnidireccional

**Gama de frecuencias efectivas**: 50 Hz - 8 000 Hz

### Requisitos del sistema para realizar la carga de la batería a través de USB

(A partir de agosto de 2017)

Computadora con puerto USB y alguno de los siguientes sistemas operativos instalados previamente:

**Sistemas Operativos** (cuando se utiliza Windows)
Windows® 10 Home / Windows® 10 Pro
Windows® 8.1 / Windows® 8.1 Pro
Windows® 8 / Windows® 8 Pro
Windows® 7

Home Basic / Home Premium / Professional / Ultimate

(cuando se utiliza Mac)
macOS (versión 10.9 o posterior)

El diseño y las especificaciones están sujetas a cambios sin previo aviso.