

Glass Sound Speaker

Reference Guide

คู่มืออ้างอิง

LSPX-S1



* 4 7 3 8 1 8 0 1 2 * (1)

4-738-180-12(1)

Made for

iPhone | iPad | iPod

English | Glass Sound Speaker

Before operating the speaker, please read this guide thoroughly and retain it for future reference.

WARNING

To reduce the risk of fire or electric shock, do not expose this apparatus to rain or moisture.

To reduce the risk of fire, do not cover the ventilation opening of the appliance with newspapers, tablecloths, curtains, etc. Do not expose the appliance to naked flame sources (for example, lighted candles).

To reduce the risk of fire or electric shock, do not expose this apparatus to dripping or splashing, and do not place objects filled with liquids, such as vases, on the apparatus.

Do not install the appliance in a confined space, such as a bookcase or similar unit.

Do not expose batteries or apparatus with battery installed to excessive heat such as sunshine, fire or the like.

Do not dismantle, open or shred secondary cells or batteries.

In the event of a cell leaking, do not allow the liquid to come in contact with the skin or eyes. If contact has been made, wash the affected area with copious amounts of water and seek medical advice.

Do not use any charger other than that specifically provided for use with the equipment.

Do not use any cell or battery which is not designed for use with the equipment.

Secondary cells and batteries need to be charged before use. Always use the correct charger and refer to the manufacturer's instructions or equipment manual for proper charging instructions.

After extended periods of storage, it may be necessary to charge and discharge the cells or batteries several times to obtain maximum performance.

Dispose of properly.

As the main plug is used to disconnect the system from the AC power source (mains), connect the system to an easily accessible wall outlet. Should you notice an abnormality in the system, disconnect the main plug from wall outlet immediately.

The system is not disconnected from the AC power source (mains) as long as it is connected to the wall outlet, even if the system itself has been turned off.

CAUTION

You are cautioned that any changes or modifications not expressly approved in this manual could void your authority to operate this equipment.



Do not subject the system to strong impact.

Do not subject the system to excessive force or strong impact. A portion of the system is made of organic glass. Chipped or broken glass may result in injury. In the case of broken glass, stop use immediately and be careful not to touch the broken area.

Precautions

On safety

The nameplates are located on the bottom exterior of the speaker and the surface of the AC adaptor.

- Before using the AC adaptor, be sure that the operating voltage is identical with that of your local power supply.

Where purchased	Operating voltage
All countries/regions	100 V – 240 V AC, 50 Hz/60 Hz

On placement

- The speaker unit, built-in amp, and cabinet are precisely tuned. Do not dismantle, modify, etc.
- Do not splash water onto this product. The product is not waterproof.
- Do not leave the speaker in a location near heat sources, or in a place subject to direct sunlight, excessive dust, moisture, rain or mechanical shock.
- Do not set the speaker in an inclined position. Otherwise, the speaker's vibrations may cause it to fall, leading to a malfunction, damage, or reduced performance.
- Orient the speaker so that the passive radiator is facing up. Setting the speaker upside-down or on its side may cause a malfunction, damage, or reduced performance.
- Use caution when placing the speaker on a specially treated (waxed, oiled, polished, etc.) surface, as staining or discoloration may result.
- Depending on the placement situation, the speaker may fall or drop. Do not leave any valuable objects near the speaker.
- When carrying the speaker, be careful of the following.
 - Do not grip the organic glass cylinder.
 - Do not hit the speaker against objects.
- Do not leave any objects susceptible to magnetism (cash cards, floppy disks with magnetic coding, etc.) near the speaker.
- If the product becomes dirty, wipe the cabinet with a soft cloth dampened with mild detergent. Do not use benzine, alcohol, thinner, detergent, etc., because they will damage the surface finish. For information on cleaning the organic glass cylinder, see "On handling the organic glass cylinder."

On temperature rise

- If the product is used for an extended period of time, the temperature of the product will rise. This is not a malfunction.

On organic glass

The speaker uses organic glass.

Misusing the organic glass may cause the glass to break, cause injury, or sometimes lead to blindness. It may also have adverse effects on the sound quality, illumination, etc. To avoid an accident, be sure to adhere to the following.

- Do not subject the speaker to strong impact, such as dropping it from a high place or hitting it against something. If you hit the speaker against a hard object, even without strong force, the organic glass may break, crack, chip, or warp, causing failure or low performance.
- Do not scratch the organic glass. Small cracks and chips can cause the organic glass to break. If the glass cracks but does not immediately break, it may break suddenly at an unexpected time. Small chips and cracks can also have a stronger negative impact on sound quality, illumination, and other functions than large cracks.
- Do not subject the speaker to extreme temperature changes. The organic glass is not heat resistant. Do not place the speaker near or on top of hot objects. Extreme temperature changes may cause the glass to break or warp.
- If you notice any cracks, chips, breaks, or other abnormalities in the organic glass cylinder, contact your nearest Sony dealer.

On handling the organic glass cylinder

- Without using strong force, brush away dust with a soft brush or feather duster, and use the supplied cleaning cloth to wipe the organic glass clean. (Do not use a scrubbing brush, sponge, etc.)
- If the organic glass is oily or covered in fingerprints, breathe onto it and use the supplied cleaning cloth to wipe it off.
- If the organic glass is exceptionally dirty, wipe it with a soft cloth that has been dampened with cold or lukewarm soapy water.
- Do not use benzine, alcohol, thinner, detergent, etc., because they will damage the surface finish.
- The inside of the cylinder was made such that dust will not stick, so do not dismantle it.

On the organic glass cylinder illumination

- Do not look directly into the illumination.
- Because each illumination LED is made by hand, there may be unique variations in the shape, brightness, and color. This is an intentional design aspect and not a problem with the function or performance of the speaker.

Notes on the AC adaptor

- When disconnecting the AC adaptor from the wall outlet (mains), do not pull on the cord. Make sure to grasp the power plug when disconnecting.
- When connecting or disconnecting the AC adaptor, turn off the speaker beforehand. Otherwise, it may cause malfunction.
- Use only the supplied AC adaptor. To avoid damaging the speaker, do not use any other AC adaptor.
- The supplied AC adaptor was made exclusively for this speaker. It cannot be used with other devices.
- The validity of the CE marking is restricted to only those countries where it is legally enforced, mainly in the countries EEA (European Economic Area).

Others

- For details on operating your mobile phone or wireless device, refer to the operating instructions supplied with the mobile phone or wireless device.
- Even if you do not intend to use the speaker for a long time, charge the battery to its full capacity once every 6 months to maintain its performance.
- If the speaker is not used for a long time, it may take longer to charge the battery.
- To protect the battery from high-temperature environments, charging may pause.
- If the duration that the speaker can be used shortens to about half the normal time, consider the life span of the rechargeable battery. For information on replacing the rechargeable battery, consult your nearest Sony dealer.
- If you have any questions or problems concerning this speaker that are not covered in this manual, please consult your nearest Sony dealer.

On Copyrights

- Apple, iPhone, iPad, iPad Air, iPad mini, and iPod touch are trademarks of Apple Inc., registered in the U.S. and other countries.
- Use of the Made for Apple badge means that an accessory has been designed to connect specifically to the Apple product(s) identified in the badge, and has been certified by the developer to meet Apple performance standards. Apple is not responsible for the operation of this device or its compliance with safety and regulatory standards.
- © 2013 CSR plc and its group companies. The aptX® mark and the aptX logo are trade marks of CSR plc or one of its group companies and may be registered in one or more jurisdictions.
- The BLUETOOTH® word mark and logos are registered trademarks owned by the Bluetooth SIG, Inc. and any use of such marks by Sony Corporation is under license. Other trademarks and tradenames are those of their respective owners.
- The N-Mark is a trademark or registered trademark of NFC Forum, Inc. in the United States and in other countries.
- Android, Google Play and other related marks and logos are trademarks of Google LLC.
- LDAC™ and the LDAC logo are trademarks of Sony Corporation.
- The system names and product names indicated in this manual are generally the trademarks or registered trademarks of the manufacturer. ™ and ® marks are omitted in this manual.

What is BLUETOOTH wireless technology?

BLUETOOTH wireless technology is a short-range wireless technology that enables wireless data communication between digital devices, such as a computer and digital camera. BLUETOOTH wireless technology operates within a range of about 10 m.

Connecting two devices as necessary is common, but some devices can be connected to multiple devices at the same time.

You do not need to use a cable for connection, nor is it necessary for the devices to face one another, such is the case with infrared technology. For example, you can use such a device in a bag or pocket.

BLUETOOTH standard is an international standard supported by thousands of companies all over the world, and employed by various companies worldwide.

Maximum communication range

Maximum communication range may shorten under the following conditions.

- There is an obstacle such as a person, metal, or wall between the system and BLUETOOTH device.
- A wireless LAN device is in use near the system.
- A microwave oven is in use near the system.
- A device that generates electromagnetic radiation is in use near the system.

Interference from other devices

Because BLUETOOTH devices and wireless LAN (IEEE802.11b/g) use the same frequency, microwave interference may occur and resulting in communication speed deterioration, noise, or invalid connection if the system is used near a wireless LAN device. In such a case, perform the following.

- Use the system at least 10 m away from the wireless LAN device.
- If the system is used within 10 m of a wireless LAN device, turn off the wireless LAN device.

Interference to other devices

Microwaves emitting from a BLUETOOTH device may affect the operation of electronic medical devices. Turn off the system and other BLUETOOTH devices in the following locations, as it may cause an accident.

- where inflammable gas is present, in a hospital, train, airplane, or a gas station
- near automatic doors or a fire alarm

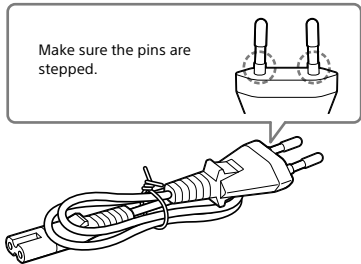
Notes

- To be able to use the BLUETOOTH function, the BLUETOOTH device to be connected requires the same profile as the system's. Note also that even if the same profile exists, devices may vary in function depending on their specifications.
- Due to the characteristic of BLUETOOTH wireless technology, the sound played on the system is slightly delayed from the sound played on the BLUETOOTH device during talking on the telephone or listening to the music.
- This system supports security capabilities that comply with the BLUETOOTH standard to provide a secure connection when the BLUETOOTH wireless technology is used, but security may not be enough depending on the setting. Be careful when communicating using BLUETOOTH wireless technology.
- We do not take any responsibility for the leakage of information during BLUETOOTH communication.
- A device featuring the BLUETOOTH function is required to conform to the BLUETOOTH standard specified by Bluetooth SIG, and be authenticated. Even if the connected device conforms to the above mentioned BLUETOOTH standard, some devices may not be connected or work correctly, depending on the features or specifications of the device.
- Noise or sound skips may occur depending on the BLUETOOTH device connected with the system, the communication environment or the usage environment.

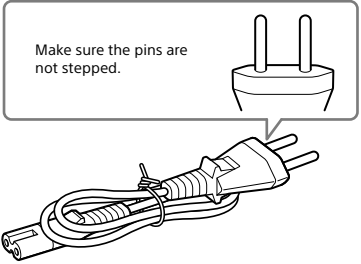
On supplied AC power cords

Your speaker is supplied with AC power cords with 2 different types of plugs. For your safety, use only the cord that is intended for use in your country/region. Never use other types of cords.

AC power cord (A): for customers in Singapore, Malaysia



AC power cord (B): for customers in Thailand



Specifications

Section for Speaker

Speakers

Tweeter: Organic glass cylinder type
 Woofer: Approx. 50 mm dia.

Enclosure type

Passive radiator model

Frequency band

60 Hz – 40,000 Hz

Section for Amplifier

Reference output power

Using AC adaptor: 13 W (woofer, at 10% harmonic distortion, 1 kHz, 6 Ω)
 Using battery: 6 W (woofer, at 10% harmonic distortion, 1 kHz, 6 Ω)

Number of outputs

4 CH (tweeter: 3 CH, woofer: 1 CH)

Section for BLUETOOTH

Communication System

BLUETOOTH Specification Version 3.0

Output

BLUETOOTH Specification Power Class 2

Maximum communication range

Line of sight Approx. 10 m*1

Radio frequency

2.4 GHz band (2.4000 GHz – 2.4835 GHz)

Modulation method

FHSS

Compatible BLUETOOTH Profiles*2

A2DP (Advanced Audio Distribution Profile) / AVRCP (Audio Video Remote Control Profile)

Supported codecs*3

SBC*4 / AAC*5 / aptX / LDAC*6

Transmission bandwidth (A2DP)

20 Hz – 20,000 Hz (with 44.1 kHz sampling) / 20 Hz - 40,000 Hz (with LDAC 96 kHz sampling, 990 kbps)

*1 The actual range will vary depending on factors such as obstacles between devices, magnetic fields around a microwave oven, static electricity, reception sensitivity, aerial's performance, operating system, software application, etc.

*2 BLUETOOTH standard profiles indicate the purpose of BLUETOOTH communication between devices.

*3 Codec: Audio signal compression and conversion format

*4 Subband Codec

*5 Advanced Audio Coding

*6 LDAC is an audio coding technology for "High Resolution (Hi-Res) Audio" developed by Sony, which operates at 990 - 303 kbps*7 with the sampling rates of 96/88.2/48/44.1 kHz.

It is optimized for high sampling rate and high bit rate coding, and allows for a transmission of Hi-Res Audio content even through BLUETOOTH connection while maintaining sound quality almost equivalent to its original under a stable wireless network environment. It also provides high coding efficiency at low sampling rates and low bit rates, enabling a CD quality audio transmission even with an unstable wireless connection.

*7 When the sampling rate is 96 kHz or 48 kHz, it operates at 990 - 330 kbps.

When the sampling rate is 88.2 kHz or 44.1 kHz, it operates at 909 - 303 kbps.

General

AUDIO IN

ANALOG Φ 3.5 mm stereo mini jack

Power

DC 19.5V (using the supplied AC adaptor connected to AC 100V-240V power supply) or, using built in lithium-ion battery

Power consumption (when using the AC adaptor)

Approx. 20 W (when charging, max. brightness setting for illumination)
 Approx. 6 W (when charging is complete, max. brightness setting for illumination)
 Approx. 1.1 W (when BLUETOOTH is in standby, illumination off)
 Approx. 0.4 W (when in normal standby)

Usage life of lithium-ion battery (when BLUETOOTH is connected)

Approx. 4 hours*8

Charging time for lithium-ion battery

Approx. 2 hours*8

Operating temperature

5 °C to 35 °C

Dimensions (including projecting parts and controls)

Approx. 82 mm dia. × 303 mm

Mass

Approx. 920 g (including rechargeable battery)

Supplied accessories:

AC power cord (2) / AC adaptor (1) / Cleaning cloth (1)

*8 Depending on the ambient temperature and circumstances of use, the actual duration may be different.

Design and specifications are subject to change without notice.

Compatible iPhone/iPad/iPod models

Compatible model	BLUETOOTH®
iPhone 6 Plus	○
iPhone 6	○
iPhone 5s	○
iPhone 5c	○
iPhone 5	○
iPhone 4s	○
iPhone 4	○
iPad Air 2	○
iPad mini 3	○
iPad Air	○
iPad mini 2	○
iPad mini	○
iPad (4th generation)	○
iPad (3rd generation)	○
iPad 2	○
iPod touch (5th generation)	○
iPod touch (4th generation)	○

as of June, 2018

Note

Sony cannot accept responsibility in the event that data recorded to iPhone/iPad/iPod is lost or damaged when using an iPhone/iPad/iPod connected to this system.

