

Wireless Speaker

Operating Instructions



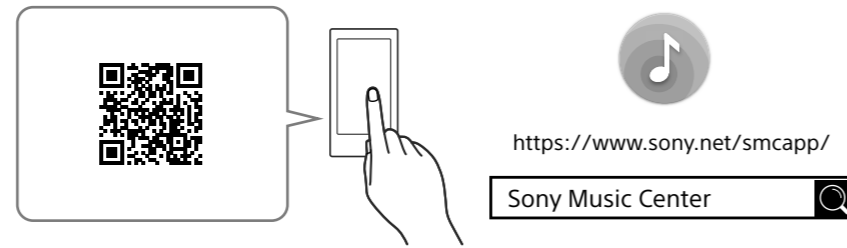
SRS-XB402M

©2019 Sony Corporation
Printed in China / Imprimé en Chine

Getting Started

Do not charge in places where water may splash on the unit. The supplied AC adaptor and the connectors of this unit (USB/DC IN) are neither waterproof nor dust proof.

1 Install "Sony | Music Center."

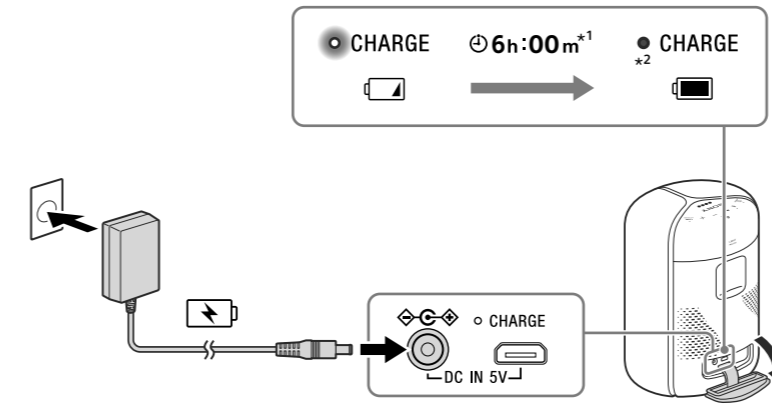


"Sony | Music Center" allows the following:

- Amazon Alexa setting
- Sound quality setting and equalizer adjustment
- Lighting setting (switching the lighting mode)

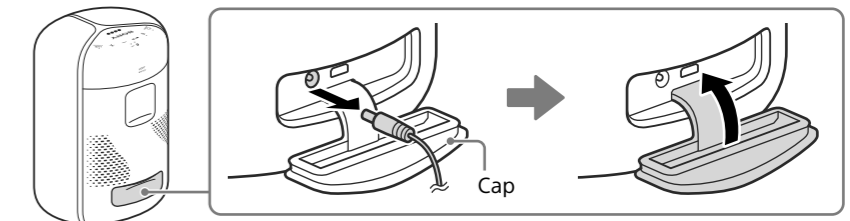
Note
On this unit, "Sony | Music Center" is available only through the Wi-Fi connection.

2 Charge the built-in battery for the first time.



3 Close the cap firmly.

The cap plays a very important role in maintenance of the waterproof performance.



*1 Time that is required to charge the empty built-in battery to its full capacity when the unit is turned off.
*2 If the built-in battery is fully charged when you connect the unit to an AC outlet, the CHARGE indicator lights up in orange then turns off after about 1 minute.

Setup

1 Check if you have your Amazon account to use Amazon Alexa.

To create your Amazon account, visit the Amazon website.

2 Place the unit as close as possible to a wireless LAN router.

- ① Establish a wireless connection from your smartphone/iPhone to the wireless LAN router.
- ② Take a note of the SSID and the password (encryption key) of the connected wireless LAN router.
Some of the wireless LAN routers have multiple SSIDs. For details, refer to the operating instructions supplied with the wireless LAN router.
- ③ In advance, you must turn on the BLUETOOTH® function on the smartphone/iPhone.

3 Set up Wi-Fi® with app.

- ① Turn on the unit.
- ② Tap to start "Sony | Music Center" and select "SRS-XB402M."
- ③ Follow the directions in the app to set up your unit for Wi-Fi. Set the unit to the smartphone/iPhone's same Wi-Fi connection.
When a Wi-Fi connection is established, the LINK indicator lights up in green.



4 Set up Amazon Alexa with app.

- ① Select [Settings] - [Amazon Alexa] from [SRS-XB402M] menu on "Sony | Music Center."
- ② Follow the directions in the app to set up your unit for Amazon Alexa.

Note
This unit may automatically update the built-in software upon completion of the Wi-Fi setup. Please wait until the update is complete and the unit restarts before setting up Amazon Alexa. The status indicators flash or light in blue in accordance with the progress of the update. After the update is complete (all four indicators are lit), the unit restarts. While the update is in progress, do not turn off the unit for any reason.

How to use

Alexa is Amazon's cloud-based voice service that brings intelligent voice control to SRS-XB402M.

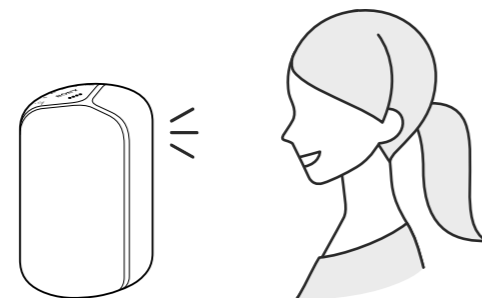
Talk to your Amazon Alexa.

You can ask Alexa to play music from supported streaming services or adjust unit volume using your voice. For details of the contents that can be operated and how to talk, refer to "Sony | Music Center."

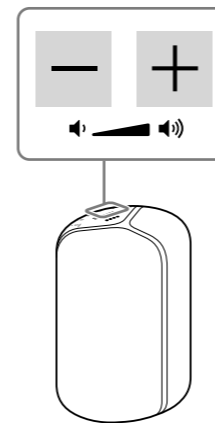
To use this function, you will need to connect your Amazon account to the unit.
You can start conversation simply by saying "Alexa" or by pressing and holding the **▶||** (play) button for about 3 seconds.

Note

- Amazon Alexa is not available in all languages and countries/regions.
- Before you use "Sony | Music Center," make sure that a Wi-Fi connection is established.



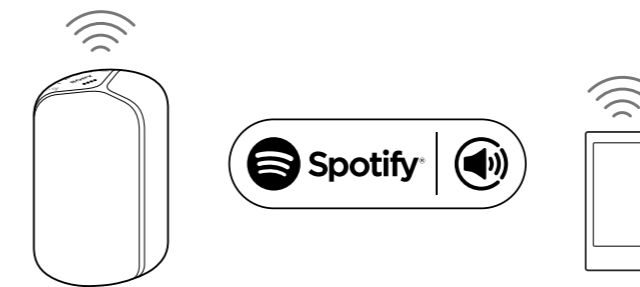
Adjust the volume.



Spotify Connect

Use your phone, tablet or computer as a remote control for Spotify.

Go to spotify.com/connect to learn how.

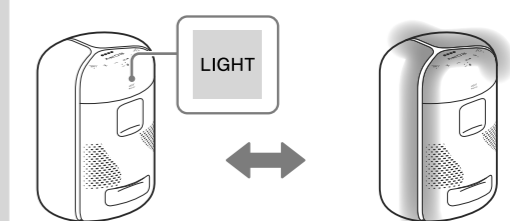


Lighting

Changing the lighting mode

Each time you press the LIGHT button/ **▶||** BATTERY button, the Lighting changes in 9 modes: RAVE, CHILL, RANDOM FLASH OFF, HOT, COOL, STROBE, CALM CYAN, CALM DAYLIGHT and OFF.

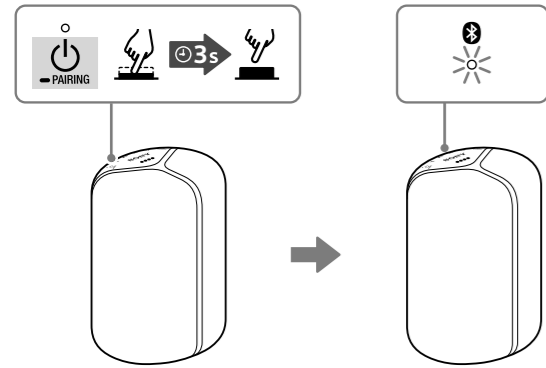
Note
This function is available only while the unit is connected through a BLUETOOTH connection or a Wi-Fi connection.



You can also use as a BLUETOOTH speaker

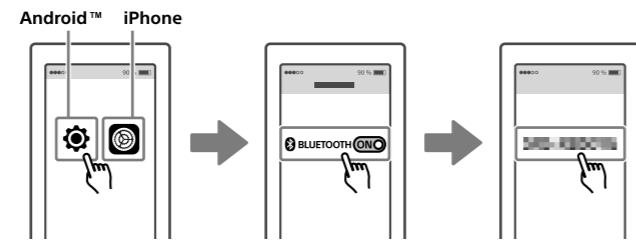
1 Press and hold the (power)/ PAIRING button for about 3 seconds.

When the unit is placed in pairing mode, the unit beeps. The (BLUETOOTH) indicator flashes quickly in blue.

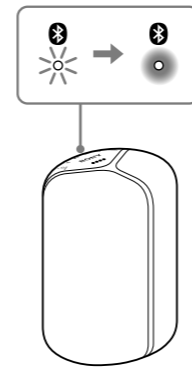


2 Establish a BLUETOOTH pairing.

If the model name is not found, select the name of the unit you set up for Wi-Fi.

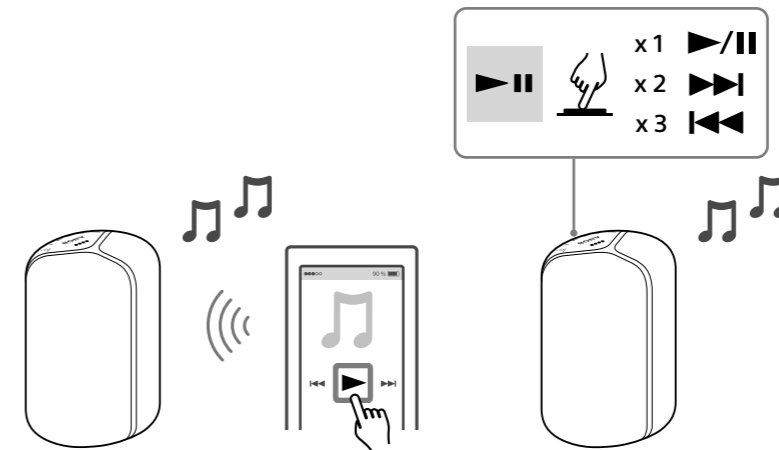


3 When a connection is established, the unit beeps and the (BLUETOOTH) indicator stops flashing and stays lit.

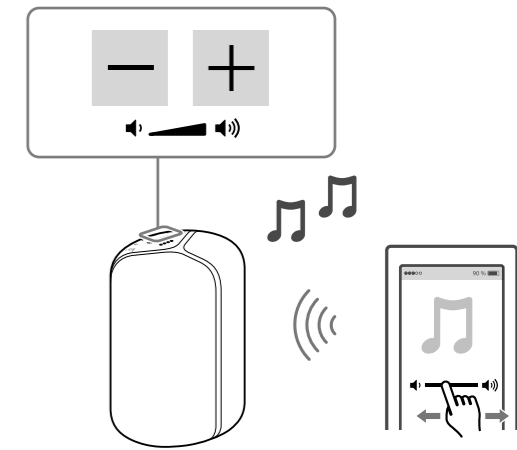


4 Start playback.

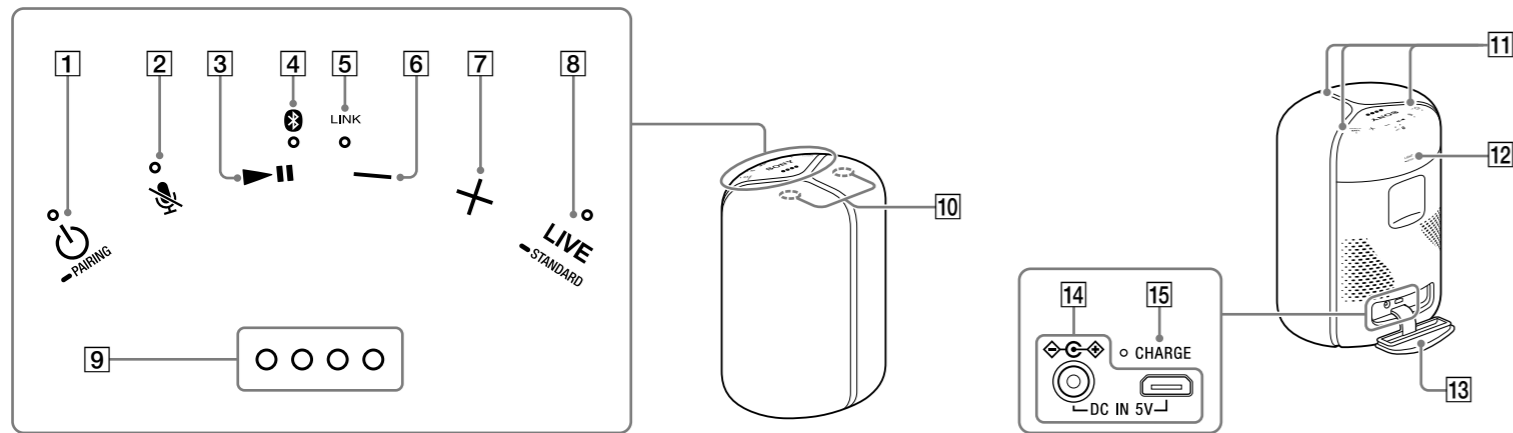
Do your desired operation.



Adjust the volume.



Parts and Controls



1 (power) button with indicator/
- PAIRING button

2 (microphone mute) button
with indicator

3 (play) button

4 (BLUETOOTH) indicator

5 LINK indicator

6 - (volume) button

7 + (volume) button

8 LIVE button with indicator/
- STANDARD button

9 Status indicators*¹

10 Built-in microphones

11 Lighting

12 LIGHT button/ - BATTERY
button*²

13 Cap

14 DC IN 5V jack

15 CHARGE indicator

*¹ Indicates the volume level, the remaining battery power, and others.

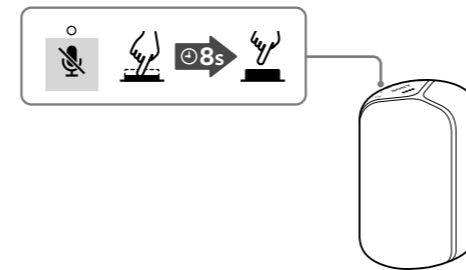
*² The **12** button is enabled only while the unit is connected through a BLUETOOTH connection or a Wi-Fi connection.

FAQ

Do you want to reset* the unit?

Press and hold the (microphone mute) button for about 8 seconds.

* The information including the Amazon Alexa settings will be retained.



Help Guide

Web document for a PC/smartphone



http://rd1.sony.net/help/speaker/srs-xb402m/h_zz/

