

SONY[®]

Wireless Speaker

Operating Instructions
使用説明書

SRS-RA3000



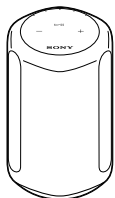
Table of contents

目錄

What's in the box/包裝內容	3
Part names/各部名稱	4
Set up the speaker/裝設喇叭	8
Play music/播放音樂	
Play music using a Chromecast-enabled app/使用支援Chromecast的應用程式播放音樂	12
Play music by talking to an Alexa Built-in device/用語音命令Alexa內建裝置播放音樂	14
Play 360 Reality Audio music/播放360 Reality Audio音樂	17
Play music via a BLUETOOTH® connection/透過BLUETOOTH®連線播放音樂	18
Others/其他注意事項	20

What's in the box

包裝內容



Wireless Speaker (1)

無線喇叭 (1)

Models for Taiwan 台灣機型



AC power cord (1)

交流電源線 (1)

Models for other countries/regions 其他國家/地區適用機型



AC power cord (1)

交流電源線 (1)



Operating Instructions (this document) (1)

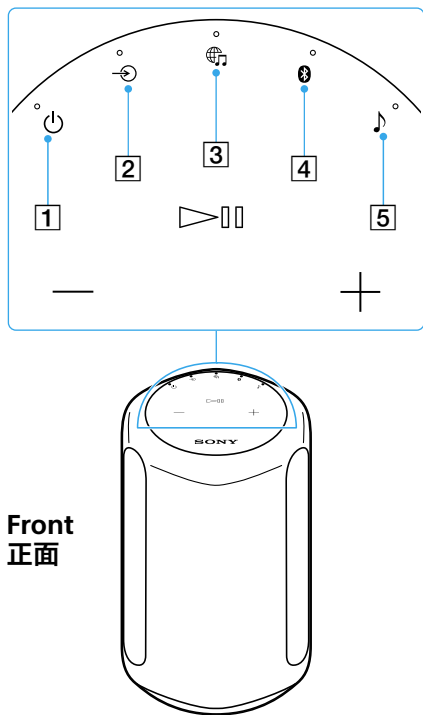
使用說明書 (本文件) (1)



Precautions/Specifications (1)

注意事項 / 規格 (1)

Part names 各部名稱



Front
正面

1 电源按钮/指示灯

Touch to turn the power on/off.

- (Green): Power on
- (Amber): BLUETOOTH/Network Standby
- (Turns off): Power off
- ☀ (Red): The speaker is in protect mode. Refer to "Troubleshooting" in the Help Guide.

2 (AUDIO IN) 按钮/指示灯

Touch to select input from the device connected to the AUDIO IN jack.

- (White): Audio input is selected.

3 音乐服务按钮/指示灯

Touch to select input from the Wi-Fi network.

- (White): Wi-Fi network input is selected.
- (Green): The speaker connects to a music service through input from the Wi-Fi network.

1 电源按钮/指示灯

按下可將電源切換為開/關。

- (綠色): 電源開啟
- (黃色): BLUETOOTH/網路待命
- (熄滅): 電源關閉
- ☀ (紅色): 喇叭處於保護模式。請參閱說明指南中的“疑難排除”。

2 (AUDIO IN) 按钮/指示灯


按下可從連接至AUDIO IN插孔的裝置選擇輸入。

- (白色): 音訊輸入已選擇。

3 音乐服务按钮/指示灯


按下可從Wi-Fi網路選擇輸入。


- (白色): Wi-Fi網路輸入已選擇。
- (綠色): 喇叭透過來自Wi-Fi網路的輸入連接至音樂服務。

4  (BLUETOOTH) button/indicator

Touch to select BLUETOOTH input. Touch and hold for more than 2 seconds to enter the BLUETOOTH pairing mode.

 (Blue): BLUETOOTH input is selected.


 (Blue): The speaker is in BLUETOOTH pairing mode.


5  (Sound Mode) button/indicator

Touch to turn the Immersive Audio Enhancement on/off (page 22).

 (Cyan): 360 Reality Audio is being played back.

 (White): The Immersive Audio Enhancement is on.

 (Blinks slowly* in cyan):
Executing the Sound Calibration (While 360 Reality Audio is being played back.)

 (Blinks slowly* in white):
Executing the Sound Calibration (While normal audio is being played back.)


 (Turns off): The Immersive Audio Enhancement is off.


* The indicator slowly brightens and dims.

4  (BLUETOOTH) 按鈕/指示燈

按下可選擇BLUETOOTH輸入。
按住2秒以上可進入BLUETOOTH配對模式。

 (藍色) : BLUETOOTH輸入已選擇。


 (藍色) : 喇叭處於BLUETOOTH配對模式。

5  (聲音模式) 按鈕/指示燈

按下可將Immersive Audio Enhancement切換為開/關 (第22頁)。

 (青色) : 360 Reality Audio正在播放。

 (白色) : Immersive Audio Enhancement開啟。

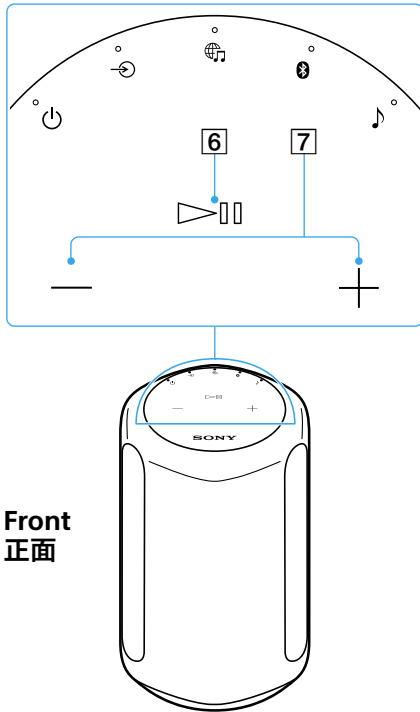
 (緩慢閃爍*青色) :
正在執行聲音校準 (360 Reality Audio正在播放)。

 (緩慢閃爍*白色) :
正在執行聲音校準 (一般音訊正在播放)。

 (熄滅) : Immersive Audio Enhancement關閉。

* 指示燈緩慢亮起及變暗。

Part names 各部名稱



6 ▶|| (Play/Pause) button

- Touch 1 time to play or pause music.
- Touch 2 times to go to the next song.
- Touch 3 times to go back to the previous song.
- Touch and hold for more than 2 seconds to play back the 360 Reality Audio sample music. To stop playback, touch the button again.

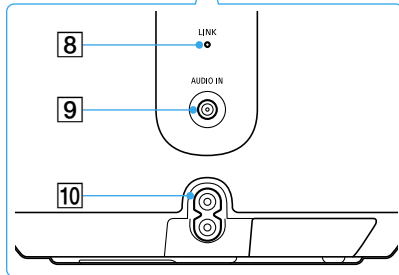
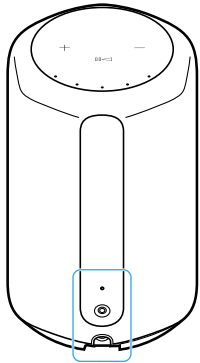
7 - / + (Volume +/-) buttons

6 ▶|| (播放/暫停) 按鈕

- 按1下可播放或暫停音樂。
- 按2下可前往下一首歌曲。
- 按3下可返回上一首歌曲。
- 按住2秒以上可播放360 Reality Audio範例音樂。若要停止播放，請再次按下按鈕。

7 - / + (音量-/+) 按鈕

Back
背面



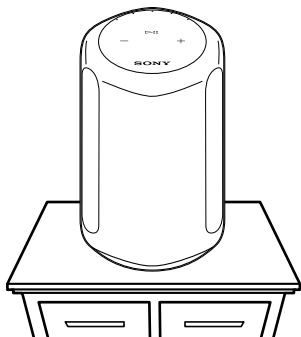
- 8 LINK indicator
 - (Amber): A Wi-Fi connection is established.
- 9 AUDIO IN jack
 - Use an analog audio cable to connect an audio device.
- 10 AC IN jack (page 8)

- 8 LINK指示燈
 - (黃色)：Wi-Fi連線已建立。
- 9 AUDIO IN插孔
 - 使用類比音訊纜線連接音訊裝置。
- 10 AC IN插孔 (第8頁)

Set up the speaker 裝設喇叭

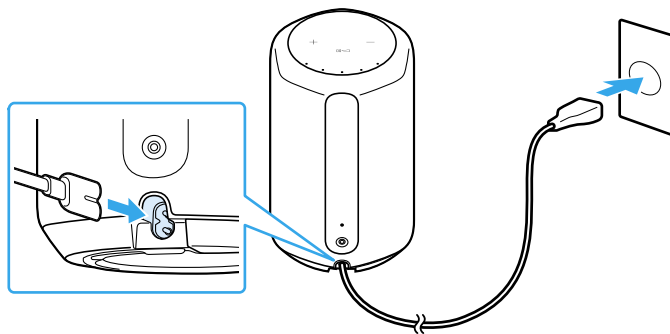
- 1 Place the speaker where you are going to use it.

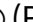
將喇叭置於您要使用的位置。

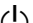


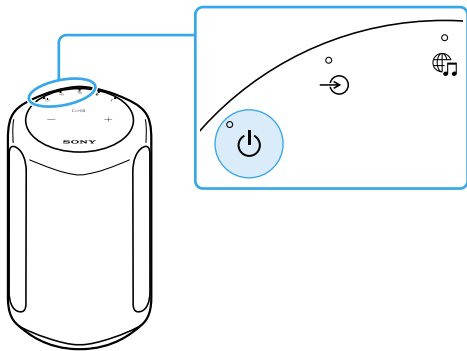
- 2 Connect the AC power cord to the speaker, and then plug it into an outlet.


將交流電源線連接至喇叭，然後插入電源插座。




3 Touch the  (Power) button to turn on the speaker.

按下  (電源) 按鈕，以開啟喇叭。

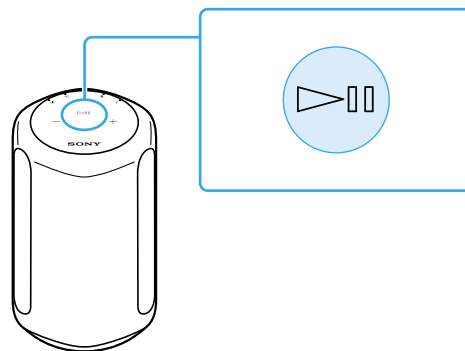


4 Touch and hold the  (Play/Pause) button for more than 2 seconds.

The 360 Reality Audio sample music plays back.

按住  (播放/暫停) 按鈕2秒以上。

360 Reality Audio範例音樂即會播放。



About the Auto Sound Calibration

- Even if you change the location of the speaker, when you turn it on and play music, the speaker automatically calibrates the sound to suit the location.
- During the Sound Calibration, the 🎵 (Sound Mode) indicator blinks slowly*.
- The efficacy of the Sound Calibration may vary, depending on the surrounding environment and music being played back.

* The indicator slowly brightens and dims.

關於自動聲音校準

- 即使改變喇叭的位置，當您開啟電源並播放音樂時，喇叭就會根據位置自動校準聲音。
- 在聲音校準期間，🎵（聲音模式）指示燈會緩慢閃爍*。
- 聲音校準的效果視周圍環境與當前播放的音樂而有不同。

* 指示燈緩慢亮起及變暗。

Play music 播放音樂

Play music using a Chromecast-enabled app 使用支援Chromecast的應用程式播放音樂

This speaker comes with Chromecast built-in™*. By using a Chromecast-enabled app, you can stream music you select on your mobile device to the speaker.

For more information about Chromecast-enabled apps, visit the support page for Google.

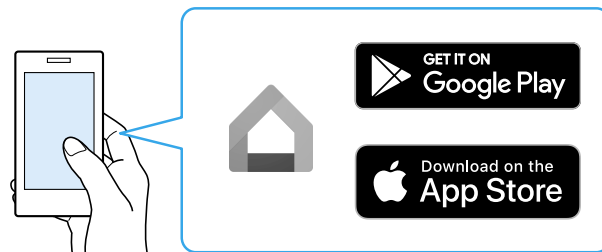
* Services may not be available, depending on your country or region.

本喇叭內附Chromecast built-in™*。
只要使用支援Chromecast的應用程式，便可將在行動裝置上選擇的音樂串流至喇叭。
如需支援Chromecast的應用程式的詳細資訊，請瀏覽Google支援網頁。

* 根據所在國家或地區，服務可能無法提供。

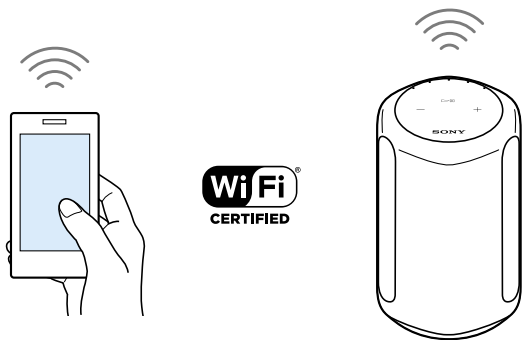
1 Install the Google Home app on your smartphone.

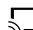
在智慧型手機上安裝Google Home應用程式。



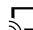
2 Follow the Google Home app's on-screen instructions to connect your speaker to the same Wi-Fi network as your smartphone.

依照Google Home應用程式畫面上的指示，將喇叭連接到與智慧型手機相同的Wi-Fi網路。

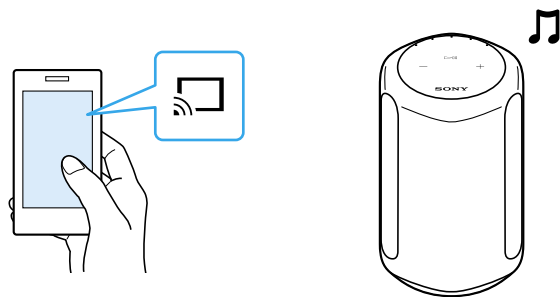


3 Tap  (cast) in your favorite streaming service to start streaming music to the speaker.

For playing back 360 Reality Audio music, see "Play 360 Reality Audio music" (page 17).

在您最愛的串流服務中點選  (投放)，開始將音樂串流至喇叭。

若要播放360 Reality Audio音樂，請參閱“播放360 Reality Audio音樂”（第17頁）。



By talking to an Alexa Built-in device, you can stream music to the speaker from a streaming service that supports Alexa.

Note

- Before operating the speaker, connect the Alexa Built-in device to the same Wi-Fi network as your smartphone and complete the initial setup.
- Alexa Voice Service is not available in all languages and countries/regions.
- The design of the app may change without notice.

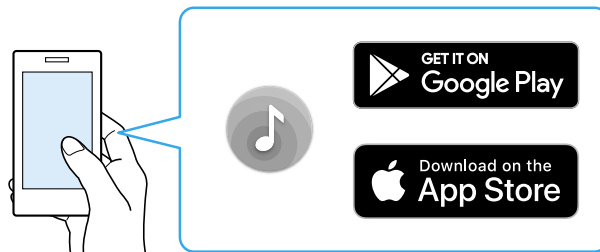
只要用語音命令Alexa內建裝置，便可從支援Alexa的串流服務將音樂串流至喇叭。

注意

- 開始操作喇叭前，請將Alexa內建裝置連接至與智慧型手機相同的Wi-Fi網路，並完成初始設定。
- Alexa Voice Service僅支援特性語言及開放特定國家/地區使用。
- 應用程式的設計可能變更而不預先通知。

1 Install “Sony | Music Center” on your smartphone.

在智慧型手機上安裝“Sony | Music Center”。



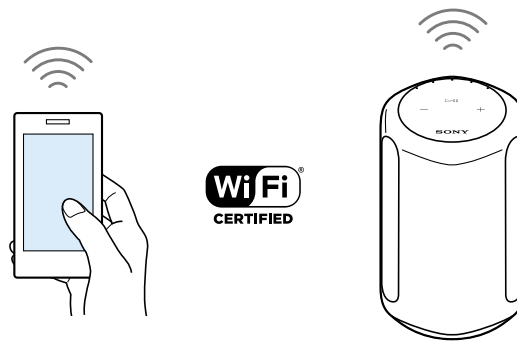
2 Select your speaker on the screen in “Sony | Music Center.”

在“Sony | Music Center”畫面上選擇您的喇叭。



3 Follow the on-screen instructions in “Sony | Music Center” to connect your speaker to the same Wi-Fi network as your smartphone.

依照“Sony | Music Center”畫面上的指示，將喇叭連接到與智慧型手機相同的Wi-Fi網路。



4 Follow the on-screen instructions to do the settings for operating the speaker with Alexa.

If the settings screen for Amazon Alexa does not appear, select [Settings] - [Amazon Alexa] - [Initial Setup] on the screen on which you selected the speaker.

依照畫面上的說明進行Alexa喇叭操作設定。

如果沒有顯示Amazon Alexa的設定畫面，請在您選擇喇叭的畫面上選擇[設定]-[Amazon Alexa]-[初始設定]。



5 Talk to Alexa to play music.

For playing back 360 Reality Audio music, see “Play 360 Reality Audio music” (page 17).

用語音命令Alexa播放音樂。

若要播放360 Reality Audio音樂，請參閱“播放360 Reality Audio音樂”（第17頁）。



A Wi-Fi network connection is required to play 360 Reality Audio music. Music cannot be played back via a BLUETOOTH connection.

- 1 Follow the procedure in “Play music using a Chromecast-enabled app” (pages 12 to 13) or “Play music by talking to an Alexa Built-in device” (pages 14 to 16) and connect the speaker to a Wi-Fi network to enable music playback.
- 2 Install a streaming service app* that provides 360 Reality Audio on your smartphone.
- 3 Use the app you installed in step 2 to cast (play) the music you want to play to the speaker.

* You can see the streaming services that provide 360 Reality Audio in “Sony | Music Center.” Services may not be available, depending on your country or region.

必須具有Wi-Fi網路連線才能播放360 Reality Audio音樂。音樂無法透過BLUETOOTH連線播放。

- 1 依照“使用支援 Chromecast 的應用程式播放音樂”（第 12 至 13 頁）或“用語音命令 Alexa 內建裝置播放音樂”（第 14 至 16 頁）的程序，並將喇叭連接至 Wi-Fi 網路，以播放音樂。
- 2 在智慧型手機上，安裝提供 360 Reality Audio 的串流服務應用程式*。
- 3 使用您在步驟 2 安裝的應用程式，將欲播放的音樂投放（播放）至喇叭。

* 您可在“Sony | Music Center”中查看提供360 Reality Audio的串流服務。根據所在國家或地區，服務可能無法提供。

1 Turn on your smartphone's BLUETOOTH function.

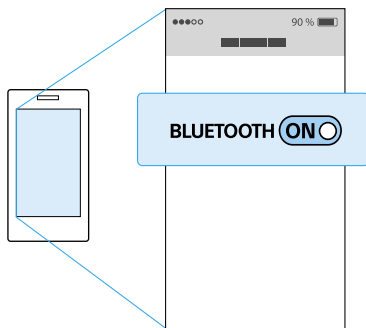
Note

360 Reality Audio cannot be played back via a BLUETOOTH connection. See "Play 360 Reality Audio music" (page 17).

開啟智慧型手機的BLUETOOTH功能。

注意

360 Reality Audio無法透過BLUETOOTH連線播放。請參閱“播放360 Reality Audio音樂”（第17頁）。

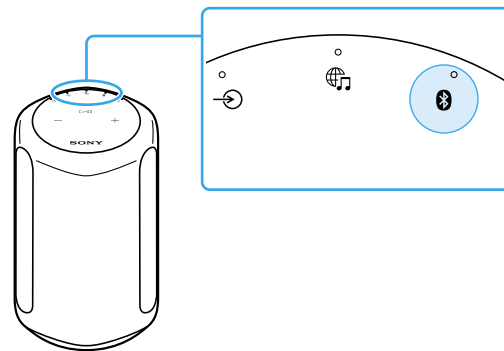


2 Touch and hold the speaker's BLUETOOTH button for more than 2 seconds to enter the BLUETOOTH pairing mode.

The BLUETOOTH indicator flashes.

按住喇叭的BLUETOOTH按鈕2秒以上，以進入BLUETOOTH配對模式。

BLUETOOTH指示燈會閃爍。

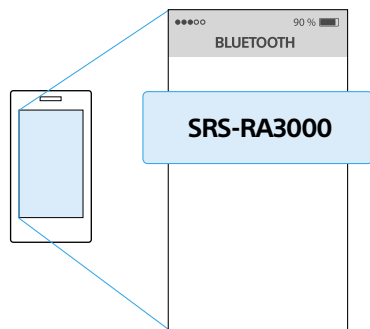


3 Search for the speaker on your smartphone, and then tap either [SRS-RA3000] or the name you gave the speaker to connect to the Wi-Fi network.

Wait until the BLUETOOTH indicator stops flashing and remains lit.

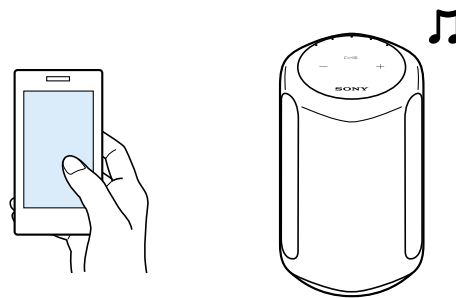
在智慧型手機上搜尋喇叭，然後點選 [SRS-RA3000] 或您為喇叭命名的名稱以連接到Wi-Fi網路。

等待BLUETOOTH指示燈停止閃爍並保持亮起。



4 Play music using a music playback app on your smartphone.

使用智慧型手機上的音樂播放應用程式播放音樂。



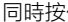




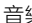

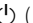
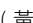
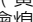
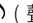
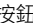
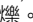
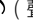
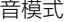
Others

其他注意事項

You can change the functions' settings by touching the various buttons on the speaker.

Functions	How to operate
The speaker's settings can be returned to their default.	Touch and hold the ► (Play/Pause) button and the — (Volume -) button simultaneously for more than 4 seconds. The BLUETOOTH indicator (blue), the 🎵 (Music Service) indicator (white), and the 🔊 (AUDIO IN) indicator (white) light at the same time when the speaker is initialized.
The BLUETOOTH/Wi-Fi network can be set to on or off.	Touch and hold the 🎵 (Music Service) button and the + (Volume +) button simultaneously for more than 4 seconds. The BLUETOOTH indicator (blue) and the 🎵 (Music Service) indicator (white) flash when the setting changes. <ul style="list-style-type: none"> • Set to on: slowly flash 2 times • Set to off: quickly flash 10 times
The BLUETOOTH/Network Standby function can be set to on or off.	Touch and hold the 🔌 (Power) button and the BLUETOOTH button simultaneously for more than 4 seconds. The speaker automatically turns off when the setting changes. <ul style="list-style-type: none"> • Set to on: the 🔌 (Power) indicator (amber) lights when the speaker is off • Set to off: the 🔌 (Power) indicator turns off when the speaker is off
The Auto Standby function can be set to on or off.	Touch and hold the 🎵 (Sound Mode) button and the 🔊 (AUDIO IN) button simultaneously for more than 4 seconds. The 🔌 (Power) indicator (green) flashes when the setting changes. <ul style="list-style-type: none"> • Set to on: flashes 2 times • Set to off: flashes 3 times
The System Sound can be set to on or off.	Touch and hold the 🎵 (Sound Mode) button and the ► (Play/Pause) button simultaneously for more than 4 seconds. This changes the System Sound between enabled and disabled.

您可按下喇叭上的各種按鈕，以變更功能的設定。

功能	操作方式
喇叭的設定可以恢復為預設值。	同時按住  (播放/暫停) 按鈕和  (音量-) 按鈕4秒以上。 喇叭初始化時，BLUETOOTH指示燈 (藍色)、  (音樂服務) 指示燈 (白色) 及  (AUDIO IN) 指示燈 (白色) 會同時亮起。
BLUETOOTH/Wi-Fi網路可以設為開或關。	同時按住  (音樂服務) 按鈕和  (音量+) 按鈕4秒以上。 變更設定時，BLUETOOTH指示燈 (藍色) 和  (音樂服務) 指示燈 (白色) 會閃爍。 <ul style="list-style-type: none"> • 設為開啟：緩慢閃爍2次 • 設為關閉：快速閃爍10次
BLUETOOTH/網路待命功能可以設為開啟或關閉。	同時按住  (電源) 按鈕和BLUETOOTH按鈕4秒以上。 變更設定時，喇叭會自動關閉。 <ul style="list-style-type: none"> • 設為開啟：喇叭關閉時， (電源) 指示燈 (黃色) 會亮起 • 設為關閉：喇叭關閉時， (電源) 指示燈會熄滅
自動待機功能可以設為開啟或關閉。	同時按住  (聲音模式) 按鈕和  (AUDIO IN) 按鈕4秒以上。 變更設定時，  (電源) 指示燈 (綠色) 會閃爍。 <ul style="list-style-type: none"> • 設為開啟：閃爍2次 • 設為關閉：閃爍3次
系統聲音可以設為開啟或關閉。	同時按住  (聲音模式) 按鈕和  (播放/暫停) 按鈕4秒以上。 這可將系統聲音切換為啟用或停用。

What is the Immersive Audio Enhancement?

The Immersive Audio Enhancement is a sound mode that allows you to experience the music of typical 2-channel playback in a three-dimensional sound field.

什麼是Immersive Audio Enhancement ?

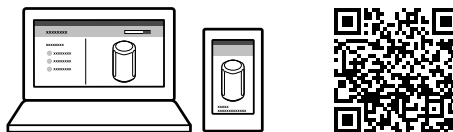
Immersive Audio Enhancement聲音模式可讓您在立體聲場中體驗一般2聲道播放的音樂。

Help Guide (Web document for a PC/smartphone)

The “Help Guide” describes the features of the speaker, how to use the speaker in detail, and how to troubleshoot.

說明指南 (PC/智慧型手機適用的網頁文件)

“說明指南”詳述喇叭的功能、使用方式及疑難排除方法。



http://rd1.sony.net/help/ha/srsra3000/h_zz/



Information about 360 Reality Audio
URL: www.sony.net/360RA/

關於360 Reality Audio的資訊
URL: www.sony.net/360RA/

5-011-974-22(1)

