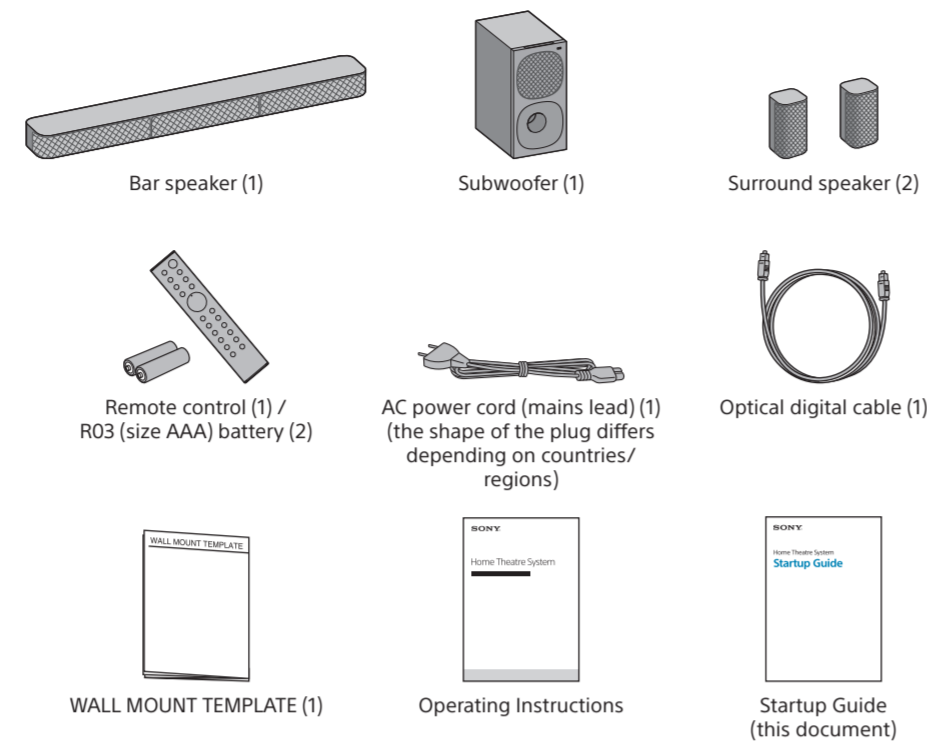


Home Theatre System Startup Guide

What's in the box



To set up the remote control

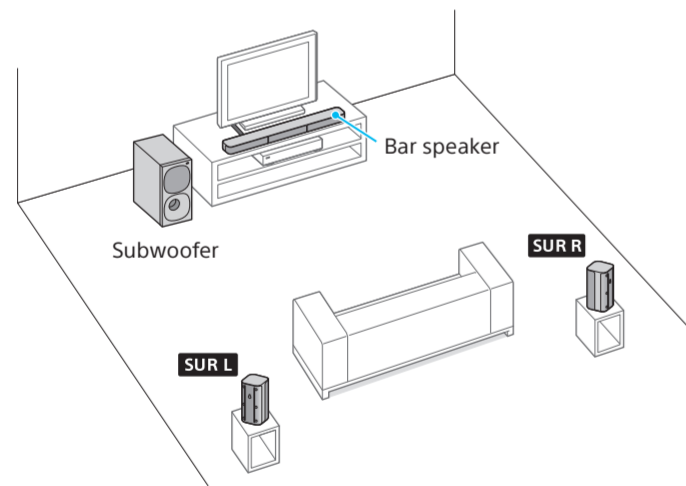


* 5 0 2 0 4 1 0 1 1 * (1)

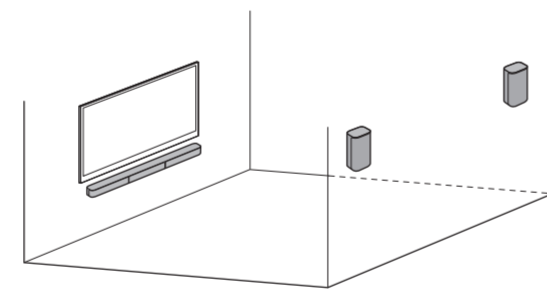
5-020-410-11(1)

HT-S20R

1 Deciding the installation position



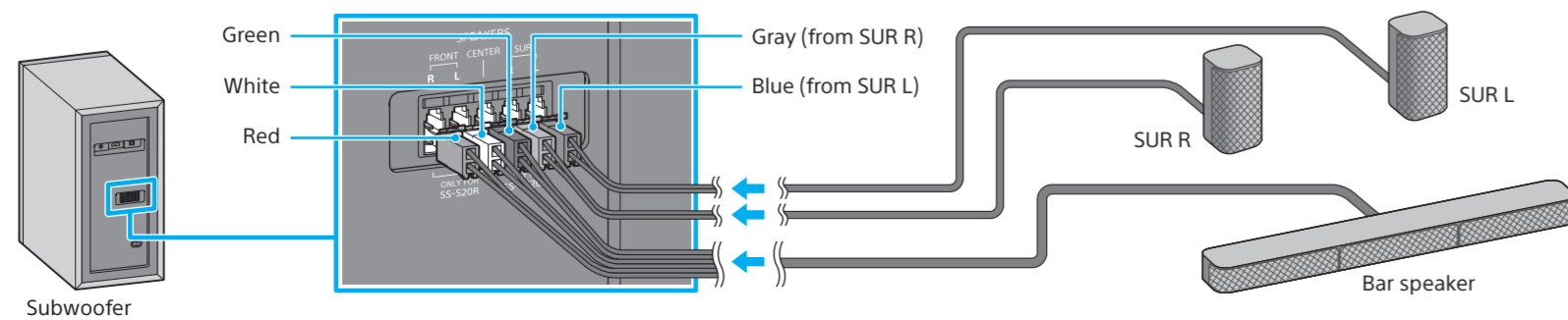
To mount the bar speaker and the surround speakers on a wall
For details, refer to the Operating Instructions (separate document).



Note

- Disconnect the AC power cords (mains leads) of the TV and devices from the AC outlets (mains) in advance. The AC power cords must be reconnected in step 4.
- Place the subwoofer 5 cm or more away from a TV rack, walls, etc.
- Check the labels on the bottom of the each surround speaker to identify "SUR L" (left) and "SUR R" (right).

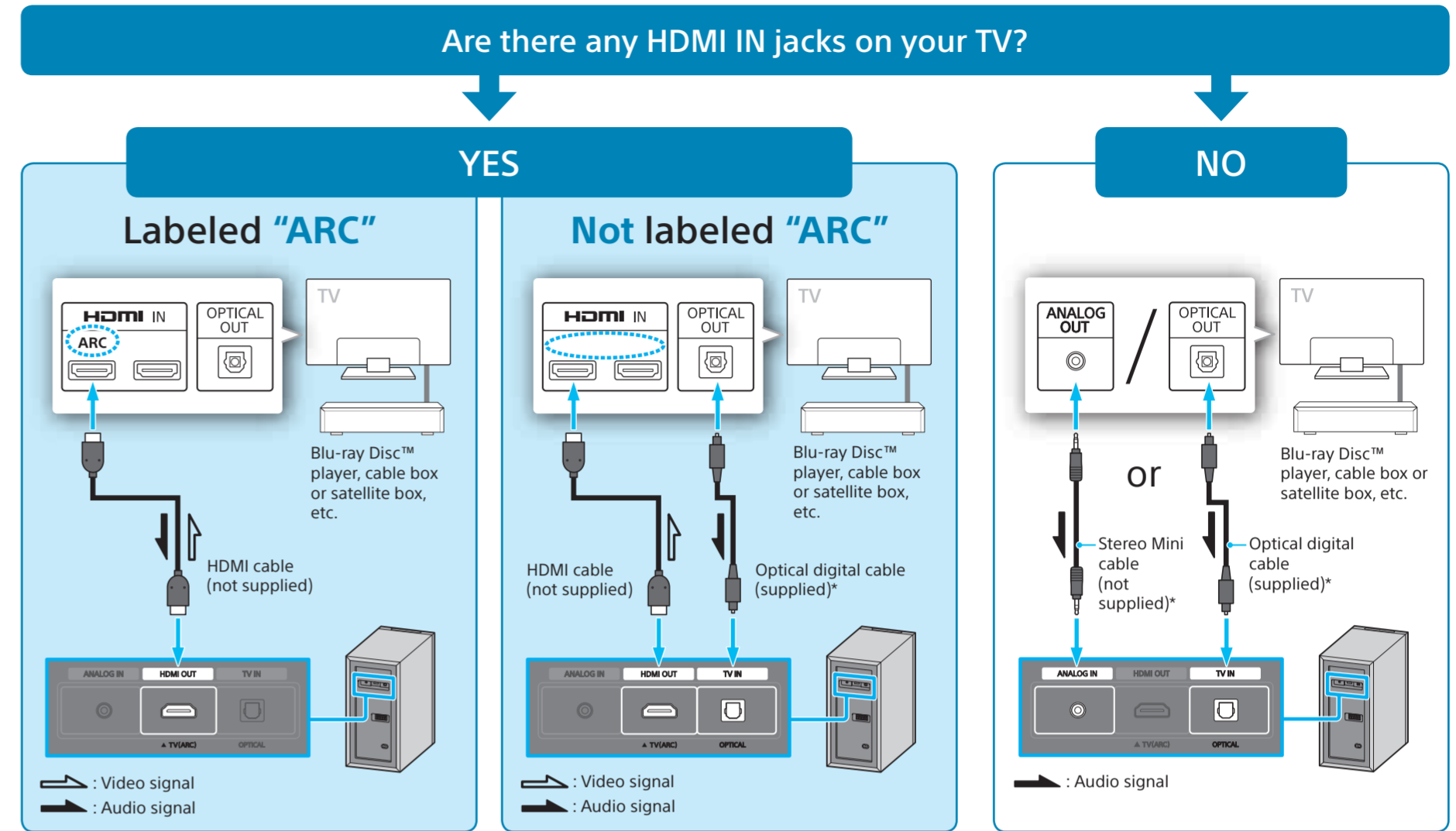
2 Connecting the speakers



Note

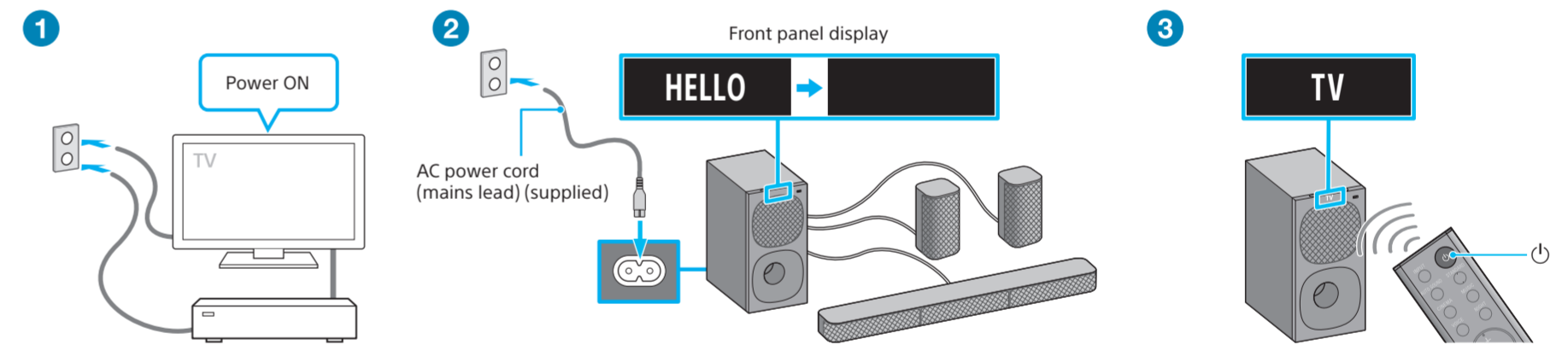
- Connect the speaker cords to the matching color of the SPEAKERS jacks on the rear panel of the subwoofer.

3 Connecting with a TV



* If your TV does not support the ARC (Audio Return Channel) function, connect an optical digital cable (supplied) or a stereo mini cable (not supplied) to listen to the TV sound.

4 Turning on the system



- 1 Turn on the TV.
- 2 Connect the AC power cord (mains lead) (supplied) to the subwoofer, then connect the AC power cord (mains lead) (supplied) to the AC outlet (mains).
The front panel display on the subwoofer lights up.
The remote control of the system does not work until [HELLO] in the front panel display on the subwoofer disappears.
- 3 Press ⏻ (power) on the remote control of the system.
[TV] appears in the front panel display on the subwoofer.

5 Listening to a TV



- 1 Press INPUT to select the proper input source according to the cable connecting with a TV.
Input sources to be selected
 - [TV]: Select this when using an HDMI cable or an optical digital cable to connect with a TV.
 - [ANALOG]: Select this when using a stereo mini cable to connect with a TV.
- 2 Select the program you want using the TV remote control.
- 3 Press ⏮ +/- to adjust the system volume and press SW ⏮ +/- to adjust the subwoofer volume.

Note

- Depending on the order in which you turn on the TV and the system, the system may enter muting mode. In this case, turn on the TV first, then the system.