

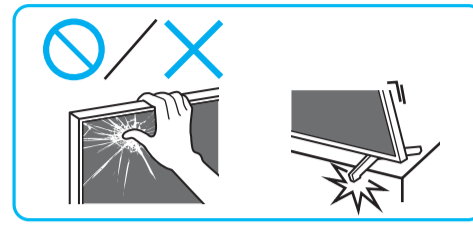
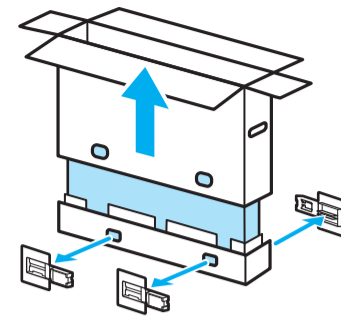
Setup Guide

Өнім атауы: Теледидар

5-025-313-31(1)



EE	Seadistusjuhend	SI	Priložnik za pripravo
LV	Uzsākšanas ceļvedis	KZ	Орнату нұсқаулығы
LT	Nustatymo vadovas	SR	Vodič za podešavanje
HR	Vodič za postavljanje	HE	מדריך הגדרה



1

*1

75
65
55

2

*2

3

4

*2

5

75

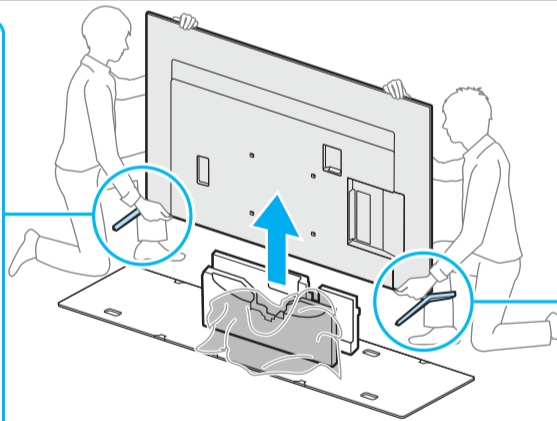
2

SB2

65
55

2

SB1



75

2

SB1

65
55

2

SB2

75

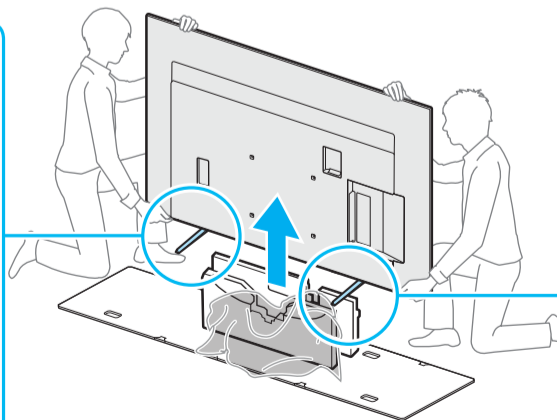
2

SB1

65
55

2

SB2



75

2

SB2

65
55

2

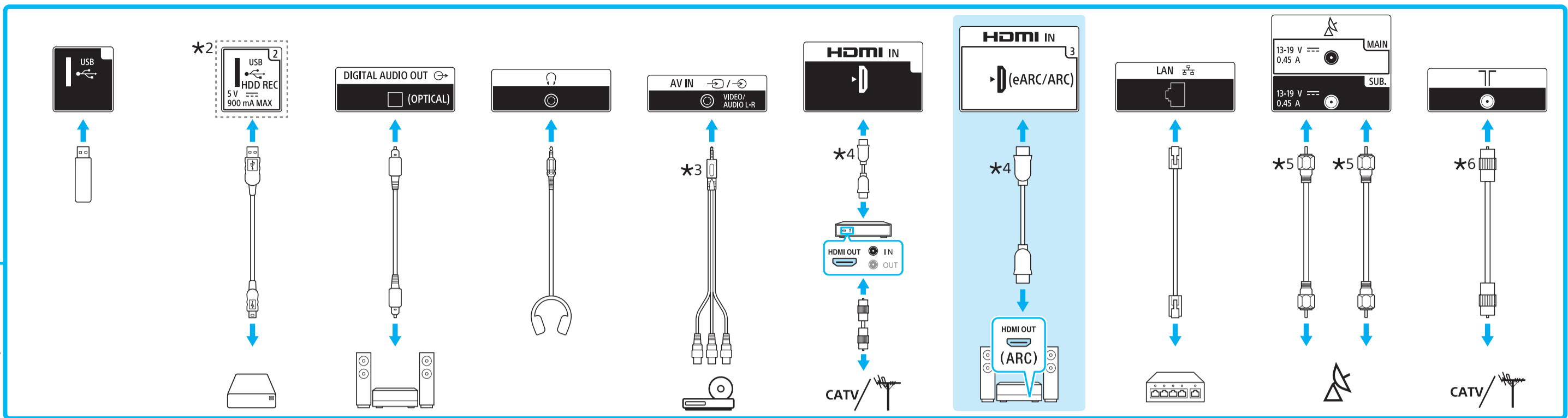
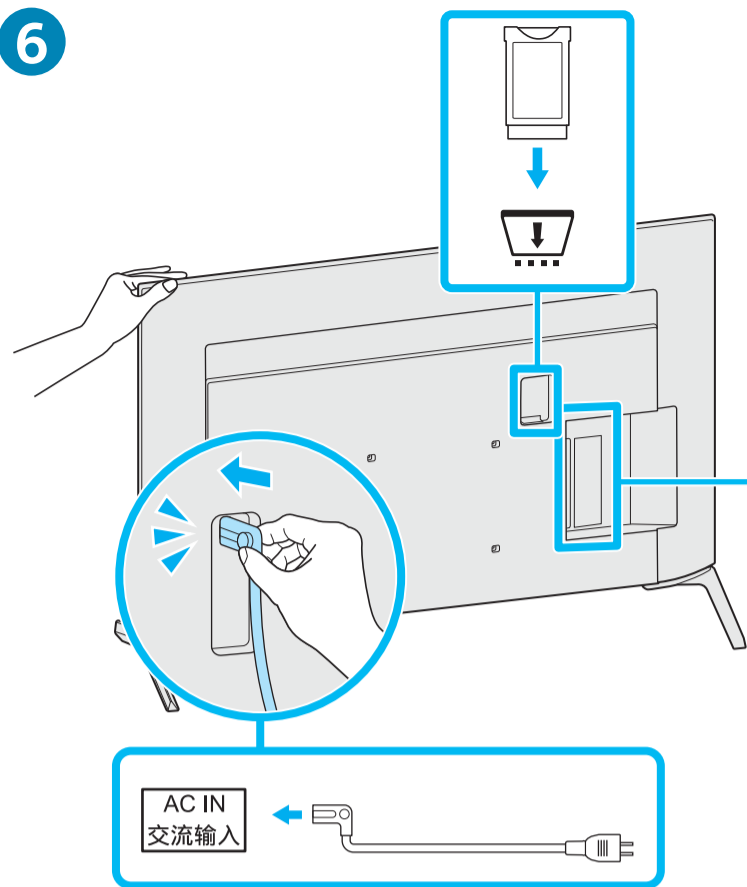
SB1

*1 Vt Teatmikku / Skatiet atsauce ceļvedi / Žr. trumpaji vadovą. / Pogledajte Referentni vodič / Glejte referenčni priložnik / Анықтама нұсқаулығын қараңыз / Pogledajte Referentni vodič / גיין במדריך תעיון /

*2 Ainult teatud piirkondades/riikides/telerimudelitel. / Tikai dažos reģionos/valstīs/dažiem televizoru modeļiem. / Tik kai kuriuose regionuose/šalyse/TV modeliuose. / Odnosi se samo na određene regije/zemlje/modele TV-a. / Samo za določena območja/države/modele televizorja. / Тек шектелген аймақта/елде/ТД үлгісі. / Samo za ograničeni region/zemlju/TV model. / באוריים/במדינות/בדגמי טלוויזיה מסוימים בלבד. /



6



*3 3.5/3.5 (mm) 1 2 3 4

1: L
2: Video / Vaizdo medžiaga / Бейне / 影像
3: GND
4: R

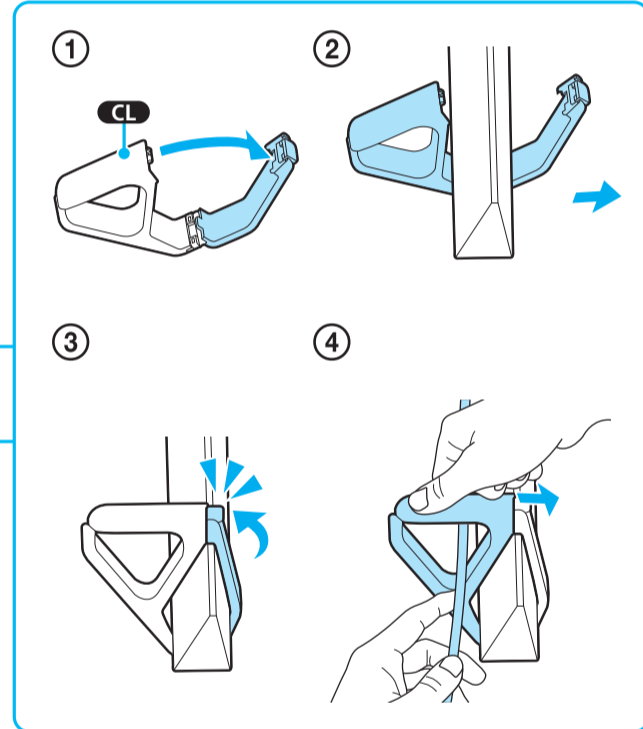
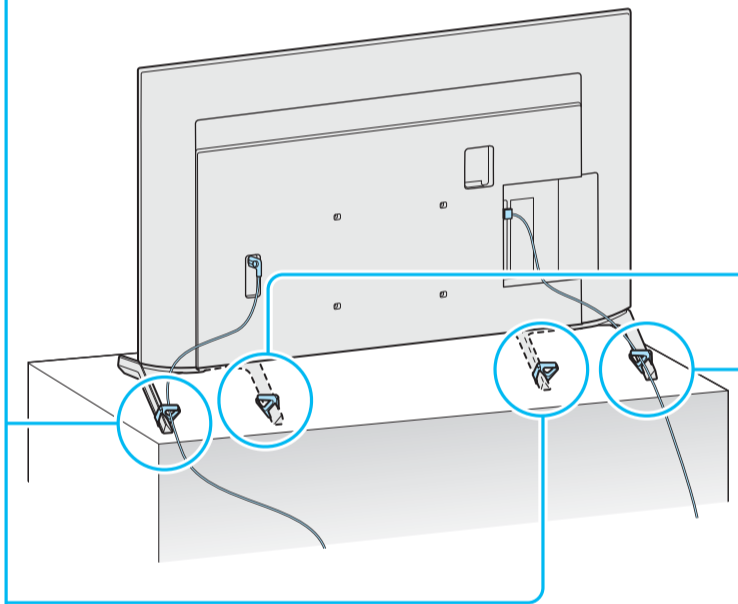
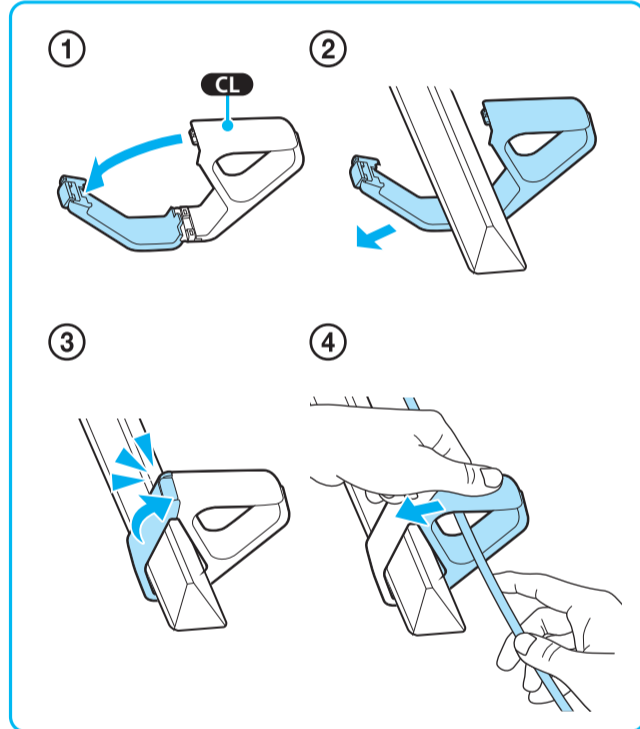
*4 < 21 (mm) < 12 (mm)

*5 < 7 (mm) < 1.5/1.5 (mm)

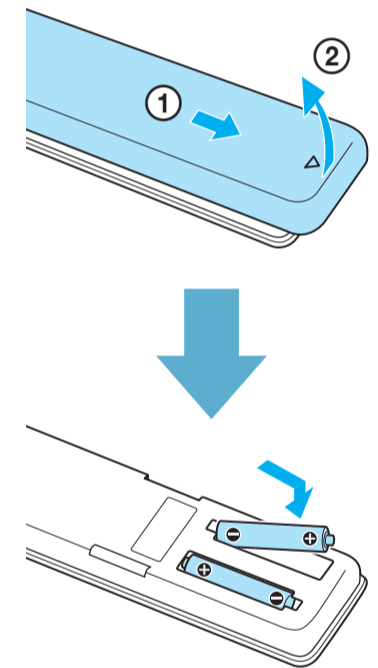
*6 < 14 (mm)

(mm) / (MM) / (מ״מ)

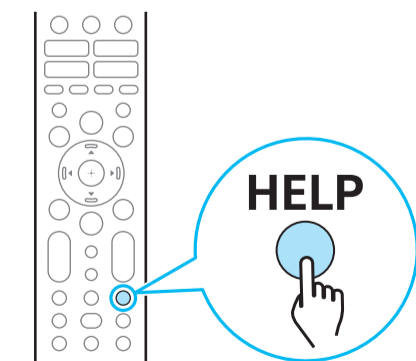
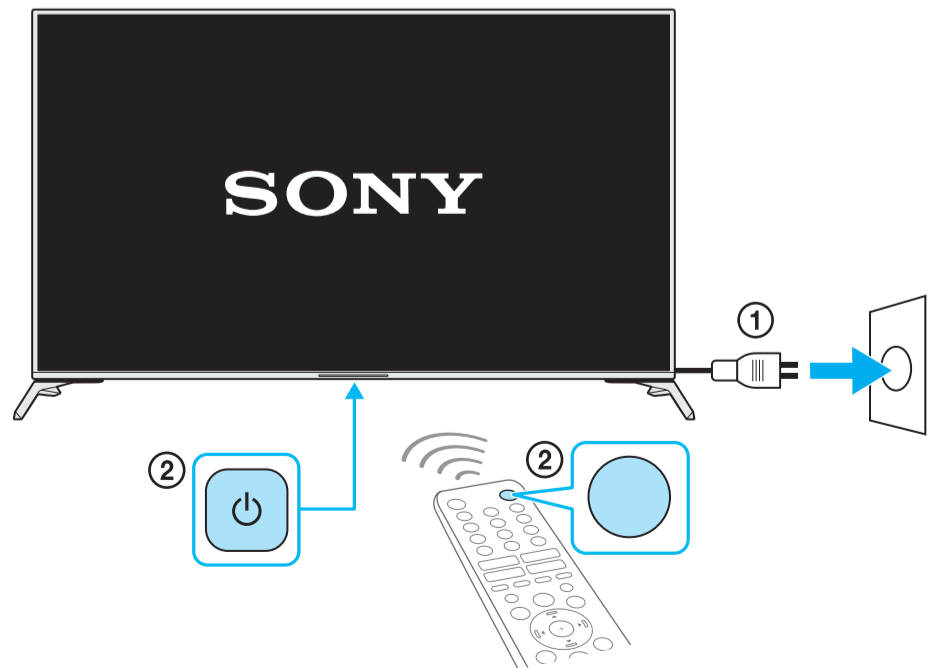
7



8



9



Spikker / Palīdzība / Žinynas / Pomoc /
Pomoč / Аһықтама / Pomoč / עזרה