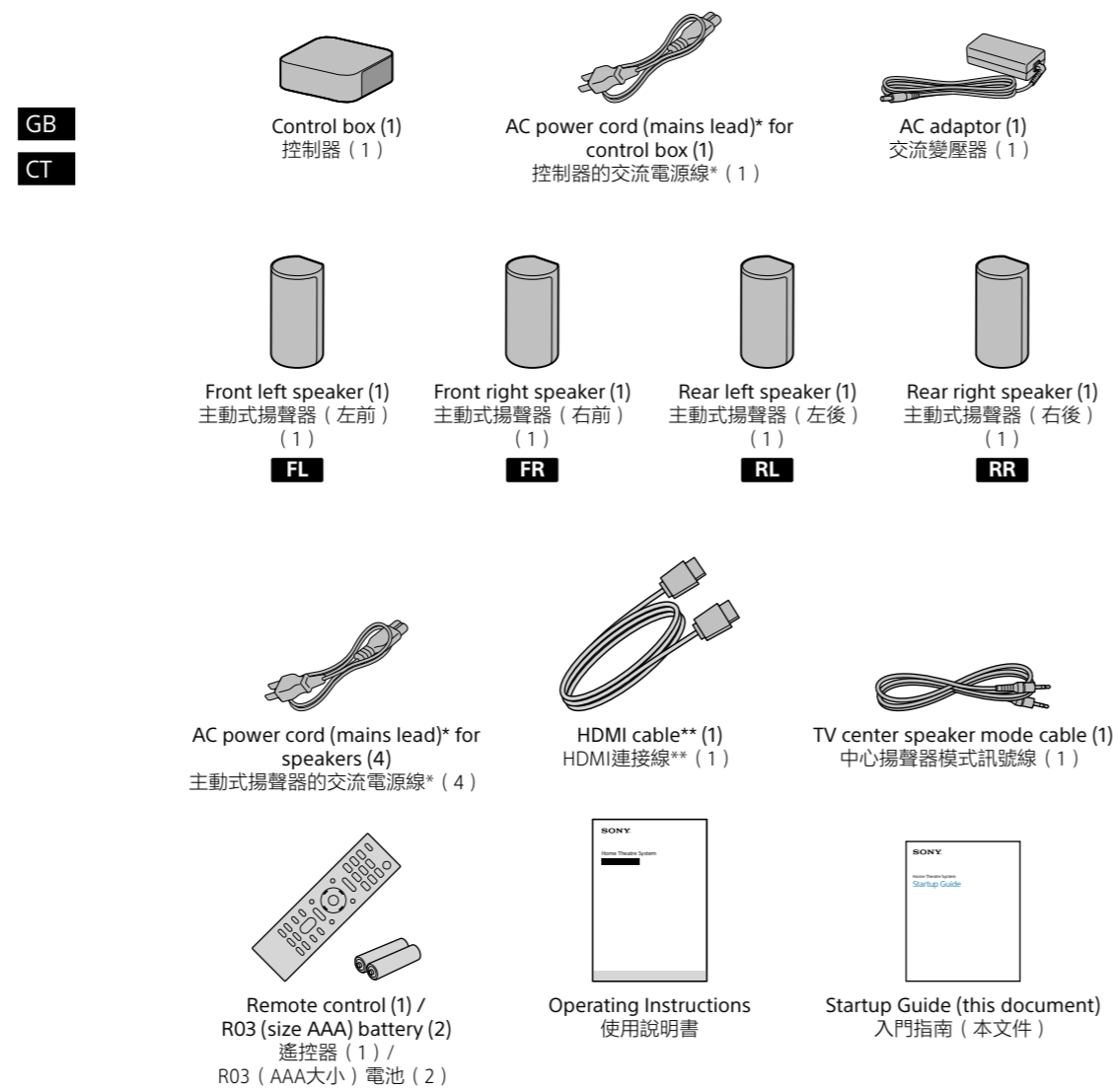


What's in the box 盒中內容



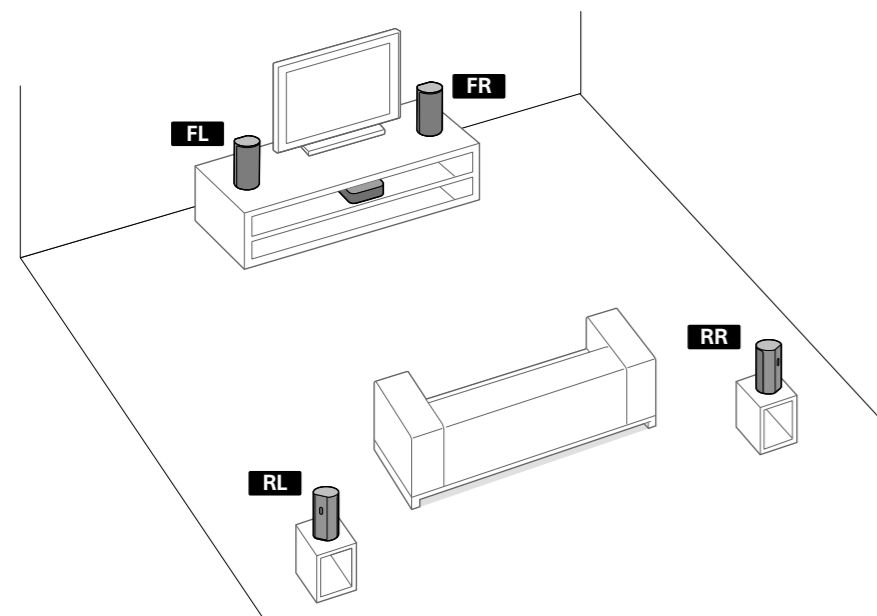
* The shape of the plug differs depending on the countries/regions.
* 插頭形狀視國家/地區而異。

** Supports the transmission of 4K/8K content.
** 支援4K/8K內容的傳輸。

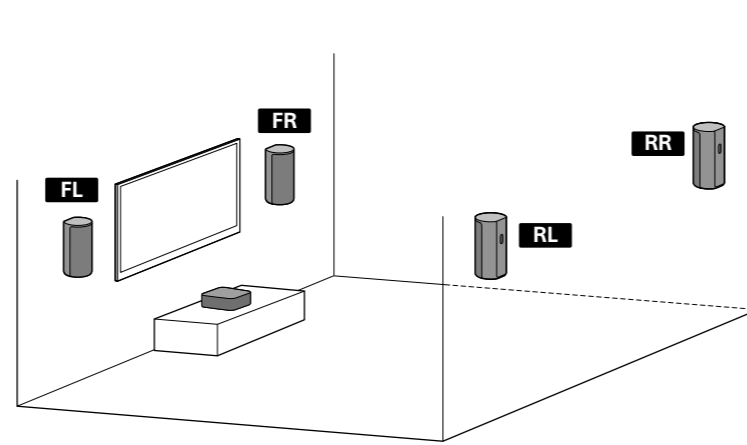


1 Choose an installation method 選擇安裝方式

Installing on a shelf/stand
在架子/底座上安裝

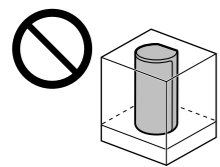


Mounting on a wall
在牆壁上安裝



or

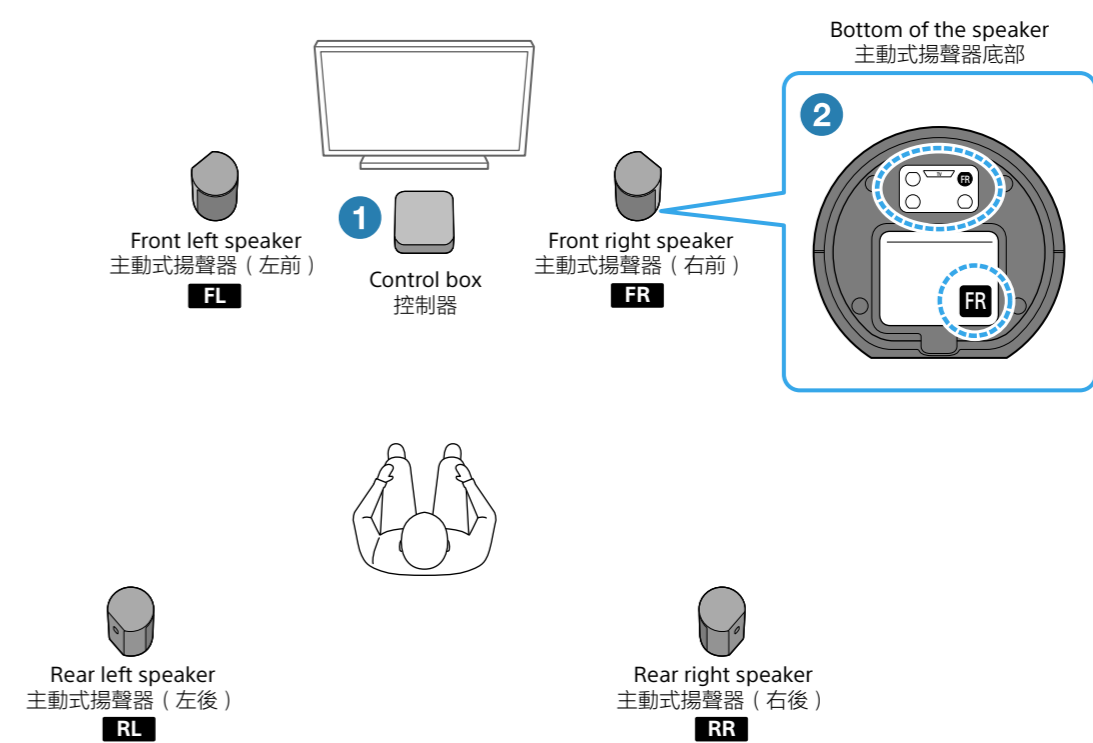
For details, refer to the Operating Instructions (separate document).
如需詳細資訊，請參閱使用說明書（另外的文件）。



- Do not place the speakers in a shelf or right below the ceiling so as not to block the sound output from the top of the speakers.
- 請勿將主動式揚聲器放在架子中或天花板正下方，以免阻擋主動式揚聲器頂部的聲音輸出。

- Do not place metal objects near the speaker system. Wireless functions may become unstable.
- 請勿將金屬物體放在揚聲器系統附近。無線功能可能不穩定。

2 Choose an installation position 選擇安裝位置



- Install the control box on or in a shelf where the front panel display is not covered.
- Choose the installation position of the speakers by checking the labels on the bottom of the speakers.
 - Surround sound can be experienced more effectively by installing the 4 speakers to surround your listening position and installing the front speakers on both sides of the TV.
 - If you install speakers as following, perform [Sound Field Adjustment] under [Manual Speaker Settings].
 - The distances from the TV to the front left speaker and the front right speaker have a large difference.
 - The distances from your listening position to the 4 speakers are very unbalanced.

Note

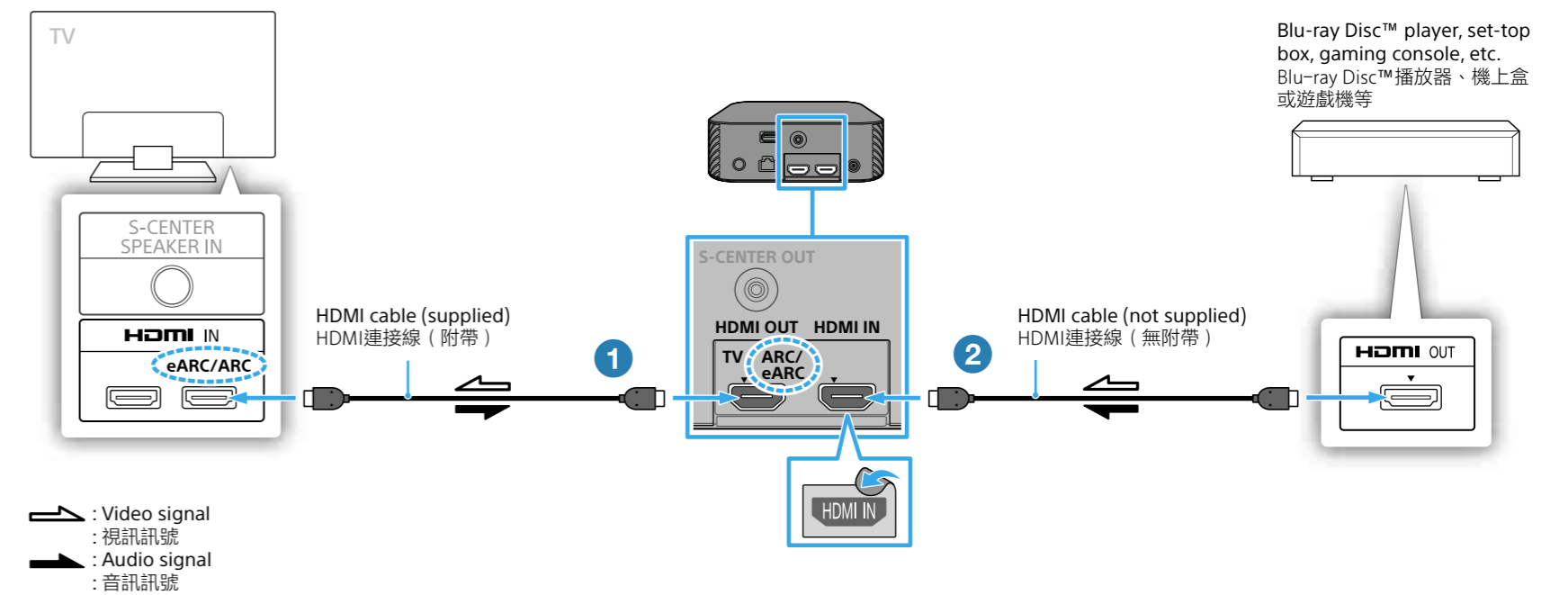
- Before connecting the speaker system, disconnect the AC power cords (mains leads) of the TV and other devices from the AC outlets (mains). Reconnect them after step 5.
- If you change the installation position of the speakers, optimize the sound field again by selecting [Setup]>[Advanced Settings]>[Speaker Settings]>[Sound Field Optimization].

- 將控制器安裝在不會遮住前顯示面板的架子上或架子中。
- 檢查主動式揚聲器底部的標籤來選擇主動式揚聲器的安裝位置。
 - 安裝4個主動式揚聲器以環繞您的聆聽位置並將前置主動式揚聲器安裝在電視機兩側，可以更有效率地體驗環繞聲。
 - 如果按照以下方式安裝主動式揚聲器，請在[手動揚聲器設定]下執行[音場調整]。
 - 從電視機到主動式揚聲器（左前）和主動式揚聲器（右前）的距離有很大的差異。
 - 從您的聆聽位置到4個主動式揚聲器的距離非常不平衡。

註

- 連接揚聲器系統之前，從交流電插座拔出電視機與其他裝置的交流電源線。在步驟5後重新連接。
- 如果變更主動式揚聲器的安裝位置，請選擇 [設定]-[進階設定]-[揚聲器設定]-[音場最佳化]再次最佳化音場。

3 Connect a TV and another device 連接電視機與其他裝置



- Video signal
- 視訊訊號
- Audio signal
- 音訊訊號

- Connect the HDMI cable (supplied) to the HDMI OUT jack on the control box and the HDMI IN jack labeled "eARC" or "ARC" on your TV. The TV sound is not output from the speaker system unless the HDMI jacks labeled "eARC" or "ARC" are connected to each other when you connect a TV and the speaker system. If your TV has a S-CENTER SPEAKER IN jack, connect the TV center speaker mode cable (supplied) also to the control box and your TV.
- Connect an HDMI cable (not supplied) to the HDMI OUT jack on another device (a Blu-ray Disc player, set-top box, gaming console, etc.) and the HDMI IN jack on the control box. You can listen to high quality sound by playing the audio formats such as Dolby Atmos-Dolby TrueHD or DTS:X. If your TV is compatible with the eARC function, you can listen to high quality sound by connecting another device to the HDMI IN jack on the TV and enabling the eARC function of the TV.

Note

- Make sure that the connectors are firmly inserted.
- Enable the Control for HDMI function on the TV. Otherwise, there will be no TV sound output from the speaker system.

Tip

- Select the appropriate HDMI cable and [HDMI Signal Format] setting according to the video formats output from the device connected to the speaker system. For details, refer to the Help Guide.
- When you connect the speaker system to a device which supports the 8K video format, refer to "Connecting an AV Device Compatible with the 8K Video Format" in the Operating Instructions (separate document).

註

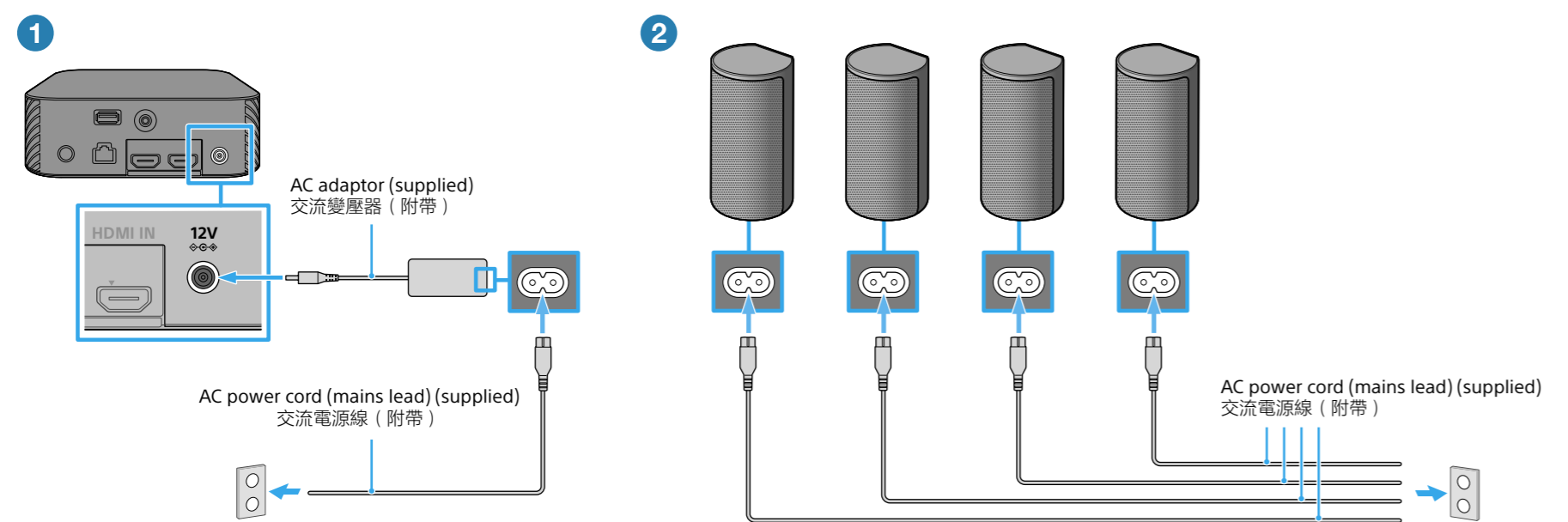
- 確定接頭牢固地插入。
- 在電視機上用HDMI控制功能。否則揚聲器系統不會輸出電視機聲音。

提示

- 根據從連接到揚聲器系統的裝置輸出的視訊格式，選擇適當的HDMI連接線和[HDMI訊號格式]設定。如需詳細資訊，請參閱說明指南。
- 當您將揚聲器系統連接到支援8K視訊格式的裝置時，請參閱使用說明書（另外的文件）中的「連接與8K訊號格式相容的AV裝置」。



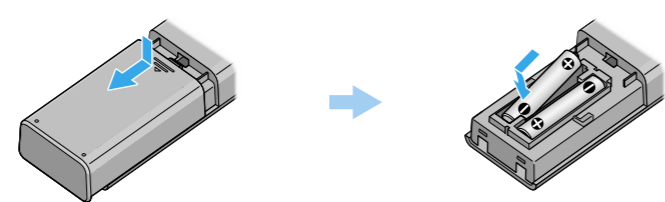
4 Connect the control box, then the speakers to the AC outlet (mains) 連接控制器，然後將主動式揚聲器連接到交流電插座



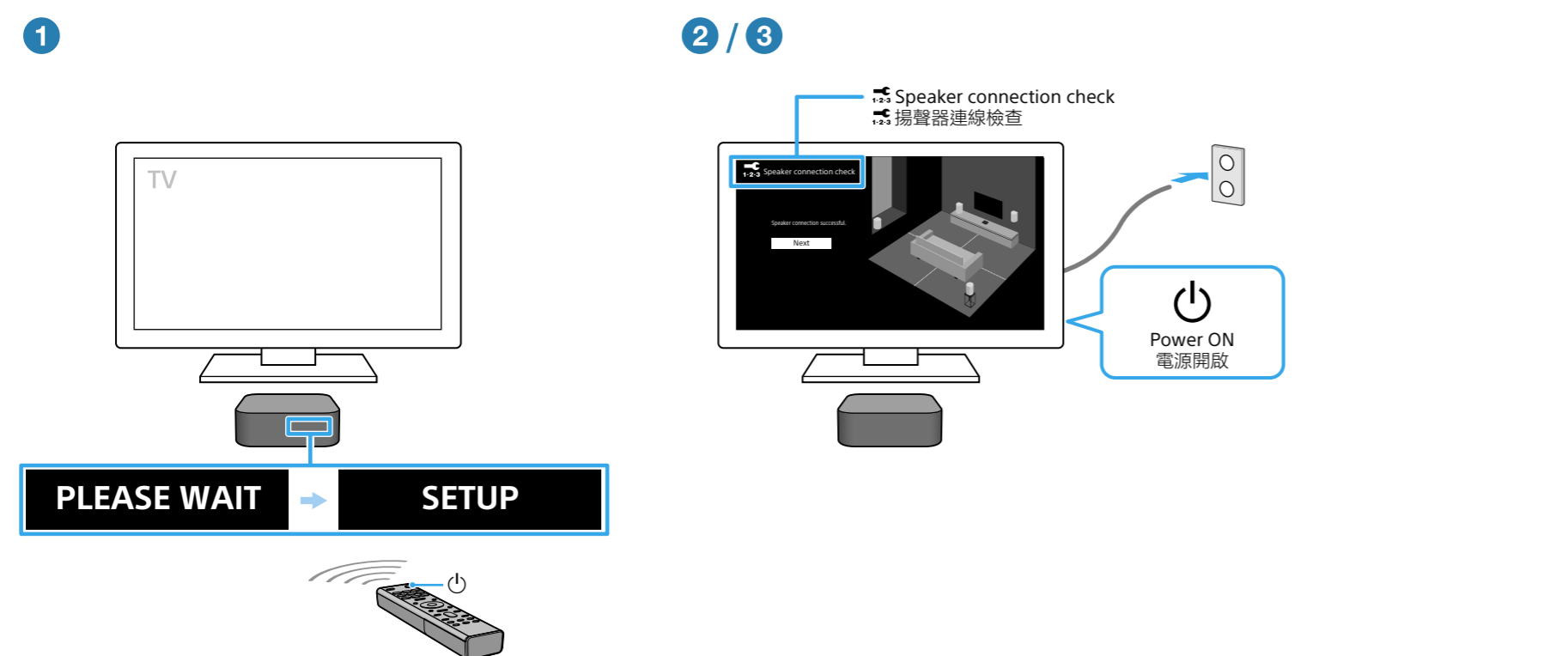
- 1 Connect the AC adaptor (supplied) to the control box, the AC power cord (supplied) to the AC adaptor, and then the AC power cord to the AC outlet (mains).
- 2 Connect the AC power cords (supplied) to the speakers and then to the AC outlets.

- 1 將交流變壓器（附帶）連接到控制器，將交流電源線（附帶）連接到交流變壓器，然後將交流電源線連接到交流電插座。
- 2 將交流電源線（附帶）連接到主動式揚聲器，然後連接到交流電插座。

5 Set up the remote control 設定遙控器



6 Turn on the control box, then the TV 開啟控制器，然後開啟電視機

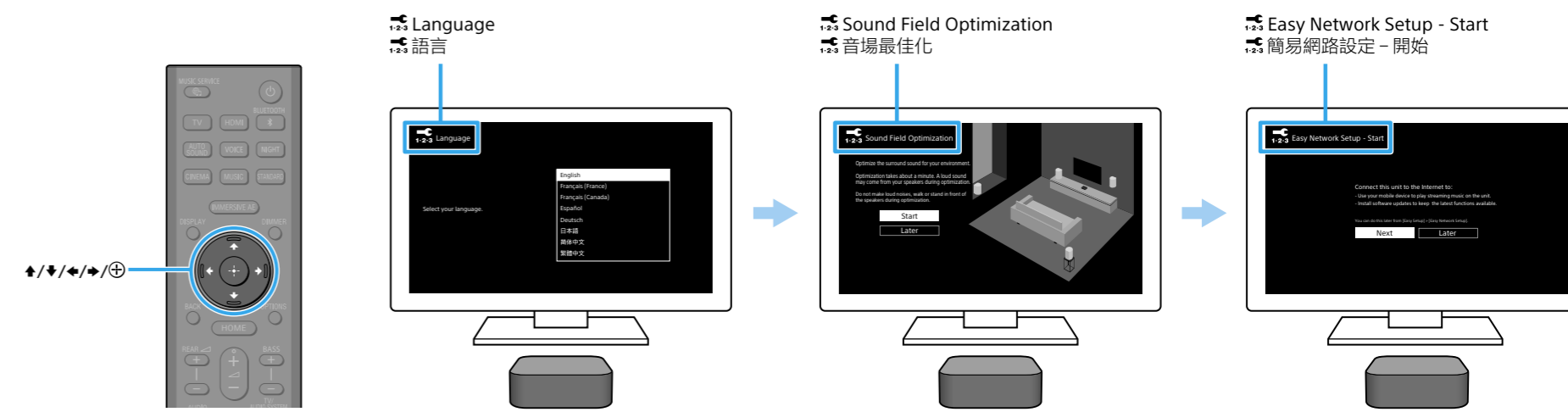


- 1 Press the ⏻ (power) button on the remote control of the speaker system to turn on the control box. The speaker system turns on and [SETUP] appears in the front panel display of the control box.
- 2 Turn on the TV. If the [Speaker connection check] screen does not appear on the TV screen, change the TV input setting to the input that the speaker system is connected to.
- 3 Check that the connection between the control box and 4 speakers is completed on the TV screen. The control box and speakers are connected automatically. The sound for connection completion is output after the check marks appear on all the speakers. The power indicator of the speaker lights in green when connecting to the control box.

- Note**
- To use the speaker system, point the remote control at the front of the control box.
 - Depending on the order in which you turn on the TV and the speaker system, the speaker system may be muted and [MUTING] may appear on the front panel display of the control box. If this happens, turn off all devices, and then turn on the TV first, then the speaker system.
 - If you connect the TV center speaker mode cable (supplied) to the control box and your TV, follow the instructions on the TV screen for the settings after Step 6.

- 註**
- 若要使用揚聲器系統，請將遙控器對準控制器正面。
 - 依據您開啟電視機與揚聲器系統的順序，揚聲器系統可能會靜音，而且控制器的前顯示面板上可能會出現[MUTING]。如果發生這種狀況，請關閉所有裝置，然後先開啟電視機，再開啟揚聲器系統。
 - 如果將中心揚聲器模式訊號線（附帶）連接到控制器和電視機，請按照電視機螢幕上的指示操作步驟6之後的設定。

7 Perform Initial Settings 執行初始設定



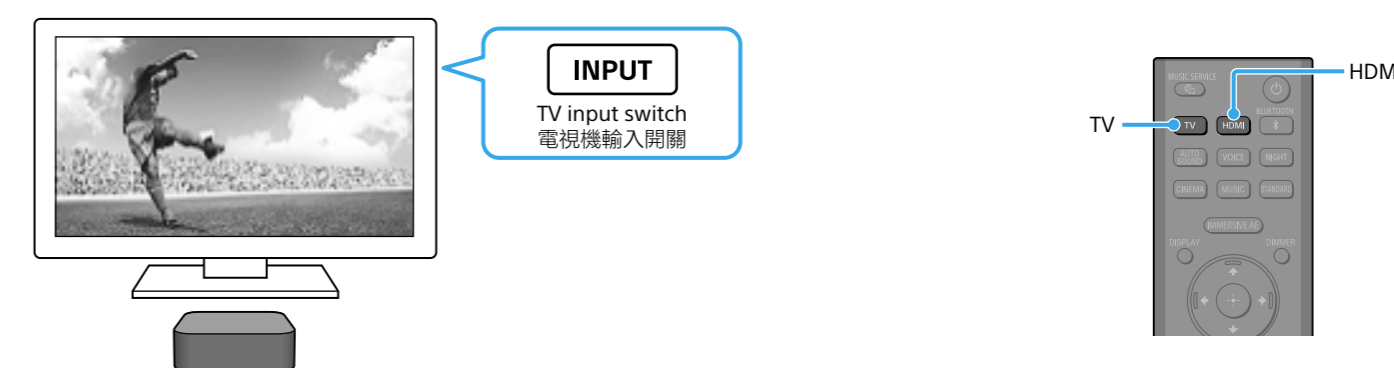
- 1 Press $\blacktriangleleft/\blacktriangleright/\blacktriangleup/\blacktriangledown$ and ⊕ to select an item by following the on-screen instructions. When the Sound Field Optimization is complete and you have finished listening to the demo music, press [Next] to continue network settings.
- 2 Once [Setup is complete.] appears, select [Finish].

- Note**
- During the Sound Field Optimization, a measurement sound is output for about 1 minute.
 - The speaker system does not output sound until the connection between the control box and 4 speakers is completed.

- 1 按下 $\blacktriangleleft/\blacktriangleright/\blacktriangleup/\blacktriangledown$ 和 ⊕ ，按照螢幕上的指示選擇一個項目。當音場最佳化完成，而且您已聽完示範音樂後，請按[下一步]繼續網路設定。
- 2 出現[設置已完成。]後，選擇[完成]。

- 註**
- 在音場最佳化期間，將輸出測量聲音約1分鐘。
 - 在控制器與4個主動式揚聲器之間的連接完成之前，揚聲器系統不會輸出聲音。

8 Listen to sound 聆聽聲音



Listen to TV Audio

- 1 Select the desired input to the TV using the TV remote control. The screen switches to the selected input screen and TV audio is output from the speaker system. If [TV] does not appear in the front panel display of the control box, press TV on the remote control of the speaker system to select the TV input. [TV] appears in the front panel display of the control box.

Listen to audio of another device connected to the HDMI IN jack on the control box

- 1 Turn on the connected device. Then use the TV's remote control to switch the TV's input to HDMI input to which the speaker system is connected.
- 2 Press HDMI on the remote control of the speaker system to switch to HDMI input. [HDMI] appears in the front panel display of the control box and the audio of the connected device is output from the speaker system.

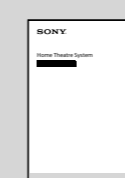
聆聽電視機的聲音

- 1 使用電視遙控器選擇所要的電視機輸入。畫面切換為所選輸入畫面，而且揚聲器系統輸出電視機的聲音。如果控制器的前顯示面板上沒有出現[TV]，請按下揚聲器系統遙控器上的TV以選擇電視機輸入。控制器的前顯示面板上出現[TV]。

聆聽連接到控制器HDMI IN插孔的其他裝置之音訊

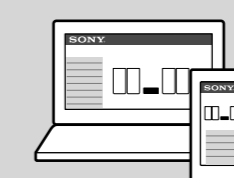
- 1 開啟連接的裝置之電源。然後使用電視遙控器將電視機輸入切換為揚聲器系統連接的HDMI輸入。
- 2 按下揚聲器系統遙控器的HDMI，以切換到HDMI輸入。控制器的前顯示面板上出現[HDMI]，連接裝置的音訊會從揚聲器系統輸出。

How to use the speaker system / Troubleshooting 如何使用揚聲器系統/故障排除



Operating Instructions (booklet)
Describes basic usage such as installation/connection and playback of connected devices.

使用說明書（小冊子）
描述基本使用，例如安裝/連接和播放連接裝置。



Help Guide (Web instruction manual)
Describes all the usage such as the network function and the detailed setting method, including the contents of the Operating Instructions.

說明指南（網頁版使用說明書）
描述所有使用，例如網路功能和詳細設定方法，包括使用說明書的內容。

https://rd1.sony.net/help/ht/a9/h_zz/



For troubleshooting when the speaker system does not operate correctly, see "Troubleshooting" in the Operating Instructions or Help Guide.

有關揚聲器系統無法正常操作時的故障排除，請參閱使用說明書或說明指南中的“故障排除”。