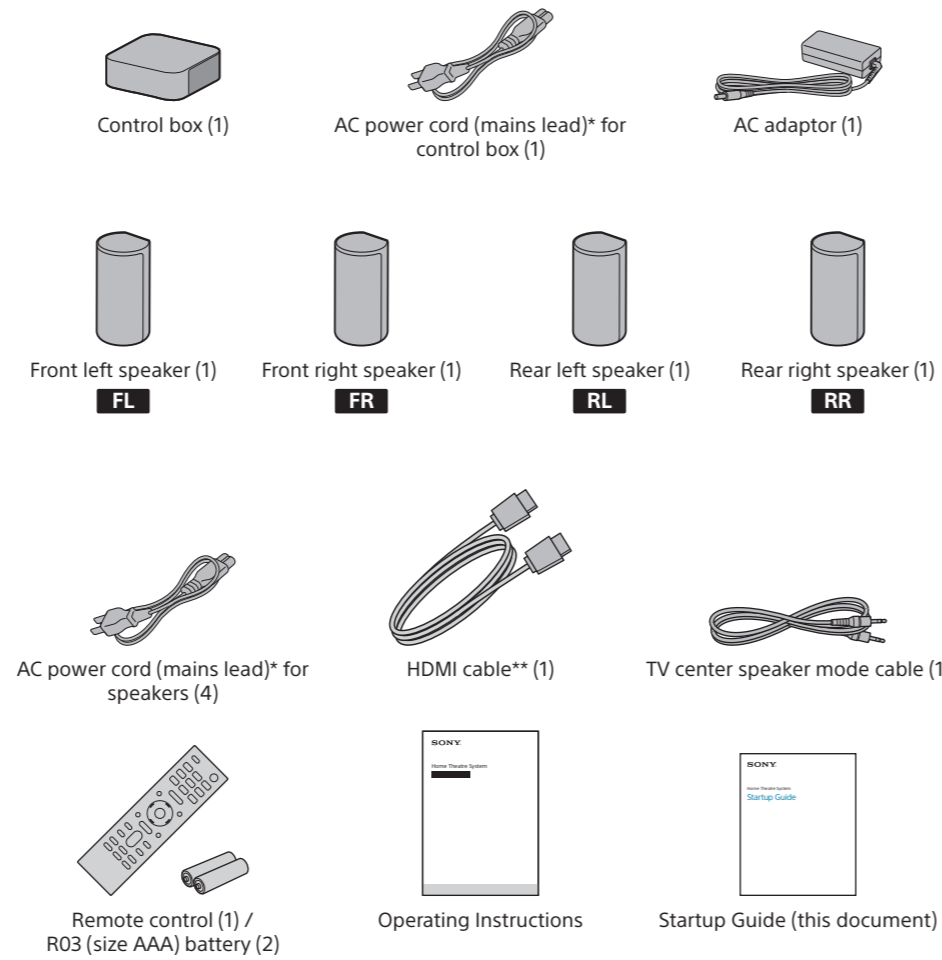




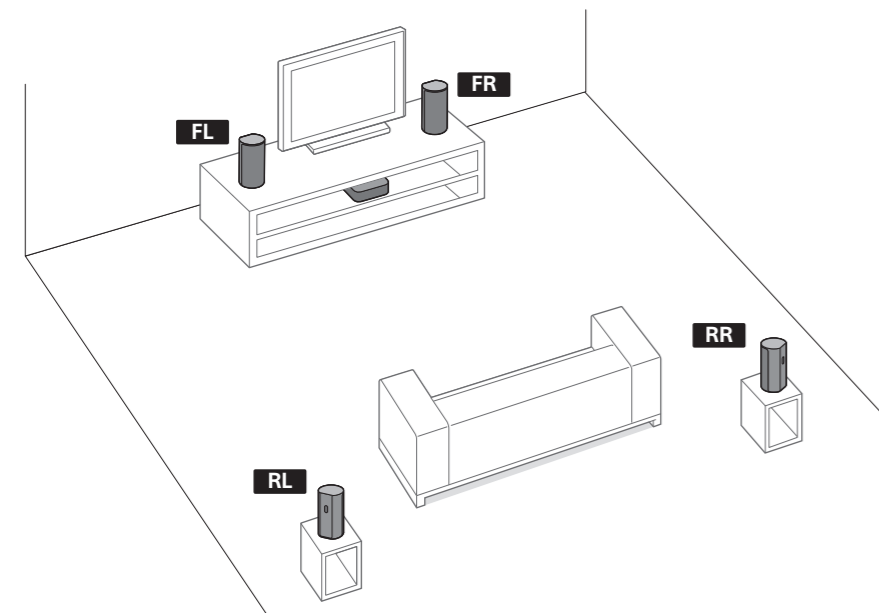
What's in the box



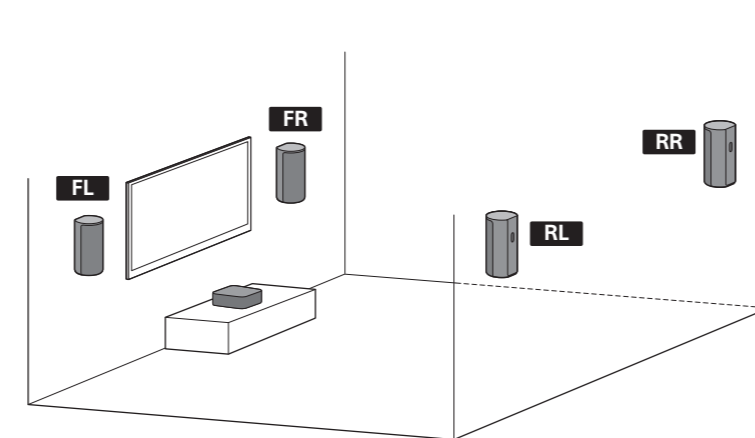
* The shape of the plug differs depending on the countries/regions.
** Supports the transmission of 4K/8K content.

1 Choose an installation method

Installing on a shelf/stand

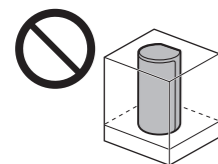


Mounting on a wall



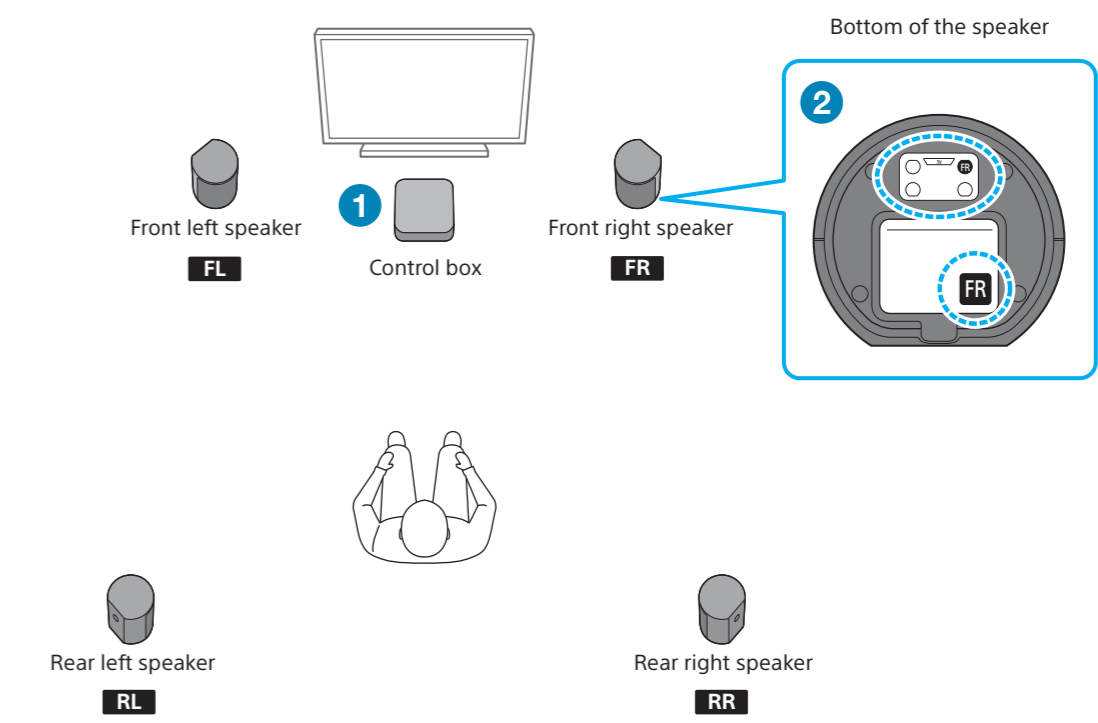
or

For details, refer to the Operating Instructions (separate document).



- Do not place the speakers in a shelf or right below the ceiling so as not to block the sound output from the top of the speakers.
- Do not place metal objects near the speaker system. Wireless functions may become unstable.

2 Choose an installation position

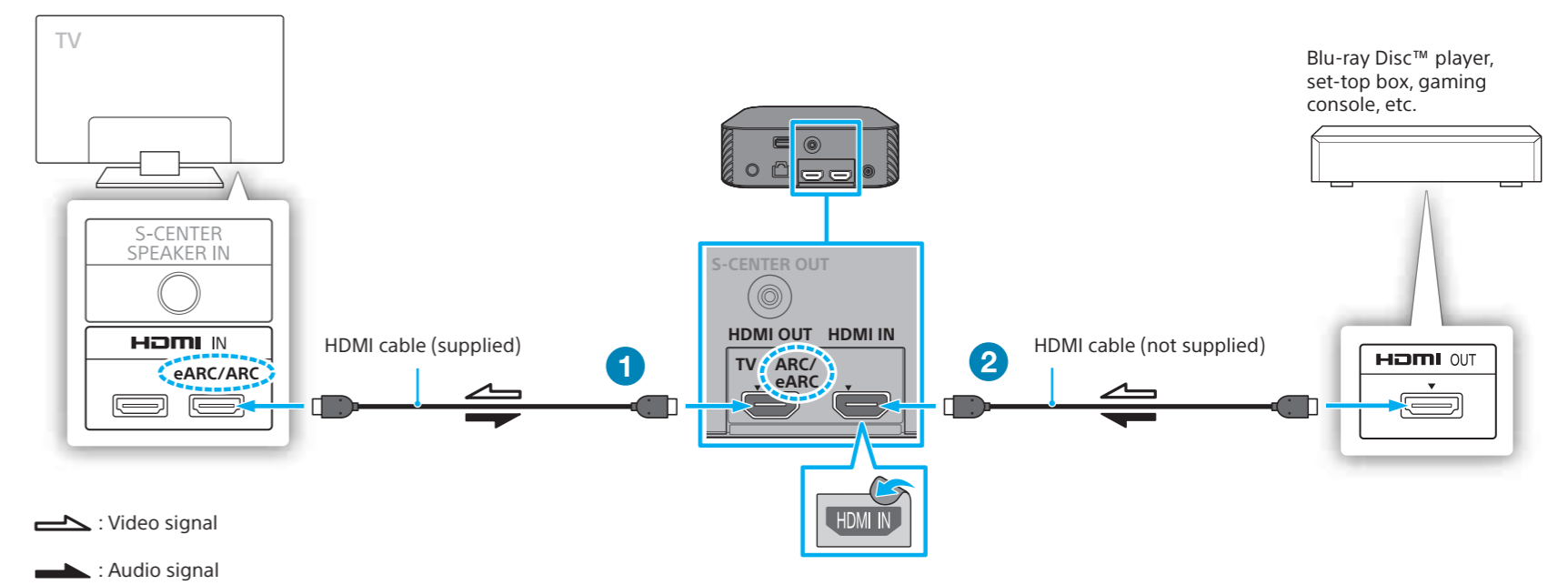


- Install the control box on or in a shelf where the front panel display is not covered.
- Choose the installation position of the speakers by checking the labels on the bottom of the speakers.
 - Surround sound can be experienced more effectively by installing the 4 speakers to surround your listening position and installing the front speakers on both sides of the TV.
 - If you install speakers as following, perform [Sound Field Adjustment] under [Manual Speaker Settings].
 - The distances from the TV to the front left speaker and the front right speaker have a large difference.
 - The distances from your listening position to the 4 speakers are very unbalanced.

Note

- Before connecting the speaker system, disconnect the AC power cords (mains leads) of the TV and other devices from the AC outlets (mains). Reconnect them after step 5.
- If you change the installation position of the speakers, optimize the sound field again by selecting [Setup]-[Advanced Settings]-[Speaker Settings]-[Sound Field Optimization].

3 Connect a TV and another device



- Connect the HDMI cable (supplied) to the HDMI OUT jack on the control box and the HDMI IN jack labeled "eARC" or "ARC" on your TV. The TV sound is not output from the speaker system unless the HDMI jacks labeled "eARC" or "ARC" are connected to each other when you connect a TV and the speaker system. If your TV has a S-CENTER SPEAKER IN jack, connect the TV center speaker mode cable (supplied) also to the control box and your TV.
- Connect an HDMI cable (not supplied) to the HDMI OUT jack on another device (a Blu-ray Disc player, set-top box, gaming console, etc.) and the HDMI IN jack on the control box. You can listen to high quality sound by playing the audio formats such as Dolby Atmos-Dolby TrueHD or DTS:X. If your TV is compatible with the eARC function, you can listen to high quality sound by connecting another device to the HDMI IN jack on the TV and enabling the eARC function of the TV.

Note

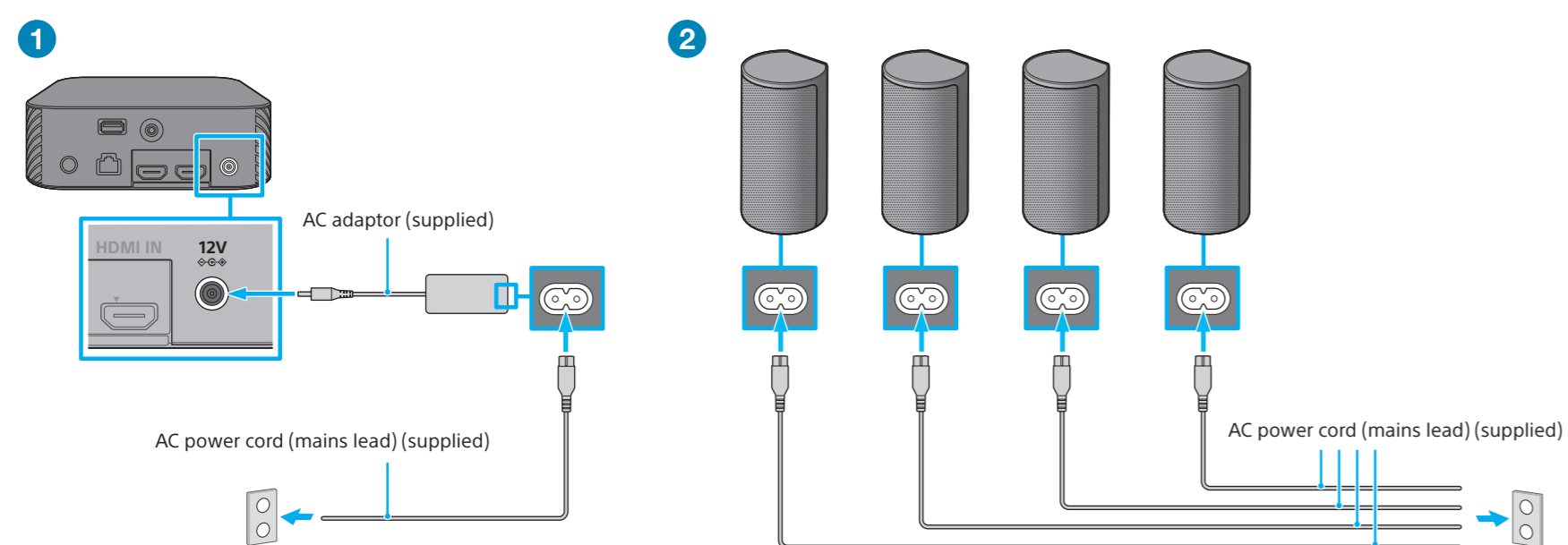
- Make sure that the connectors are firmly inserted.
- Enable the Control for HDMI function on the TV. Otherwise, there will be no TV sound output from the speaker system.

Tip

- Select the appropriate HDMI cable and [HDMI Signal Format] setting according to the video formats output from the device connected to the speaker system. For details, refer to the Help Guide.
- When you connect the speaker system to a device which supports the 8K video format, refer to "Connecting an AV Device Compatible with the 8K Video Format" in the Operating Instructions (separate document).

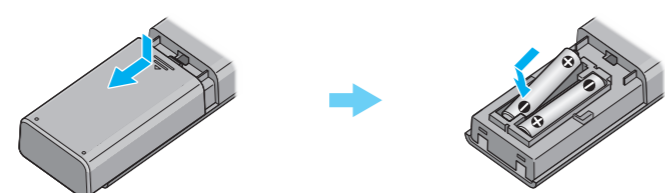


4 Connect the control box, then the speakers to the AC outlet (mains)

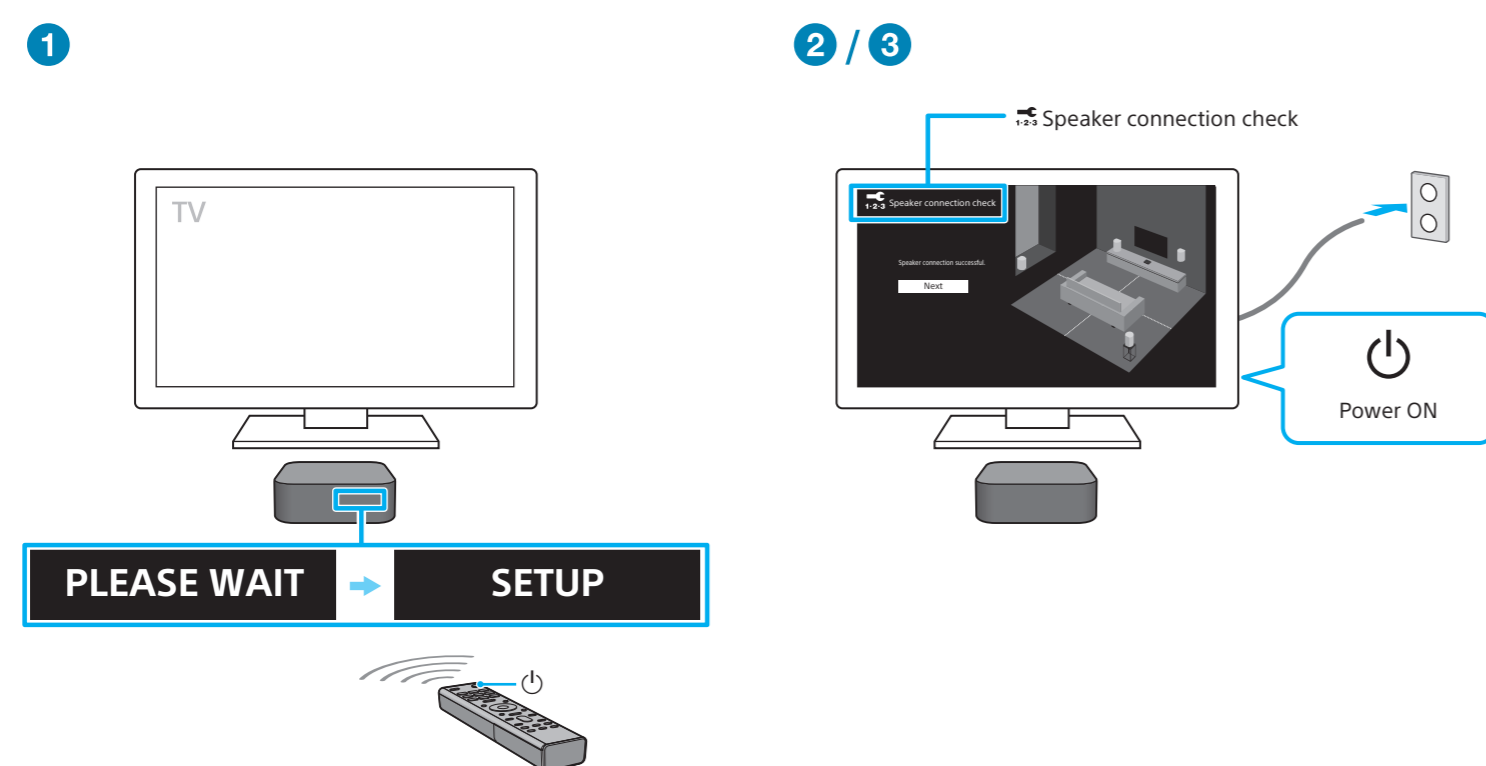


- 1 Connect the AC adaptor (supplied) to the control box, the AC power cord (supplied) to the AC adaptor, and then the AC power cord to the AC outlet (mains).
- 2 Connect the AC power cords (supplied) to the speakers and then to the AC outlets.

5 Set up the remote control



6 Turn on the control box, then the TV

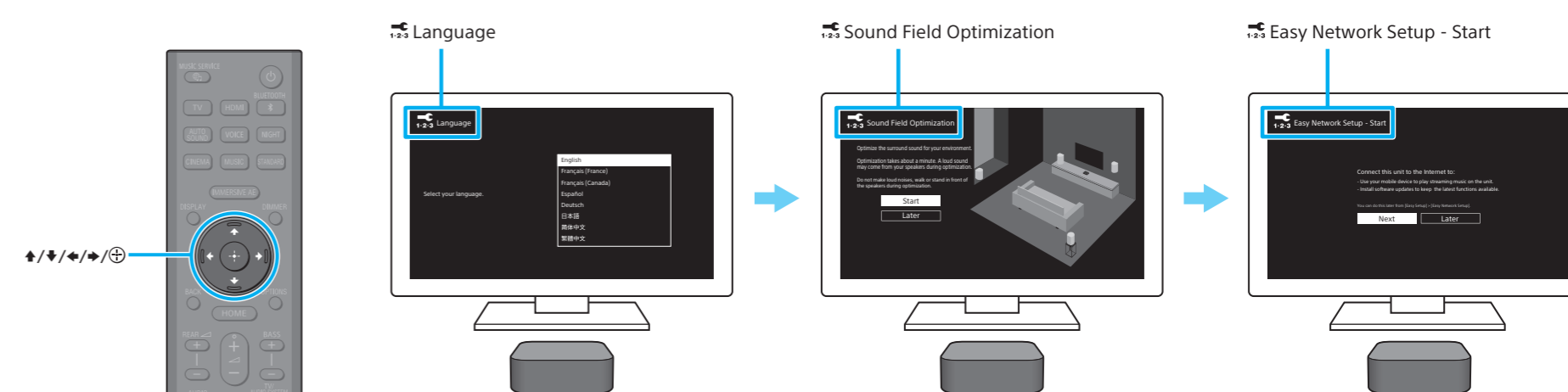


- 1 Press the (power) button on the remote control of the speaker system to turn on the control box. The speaker system turns on and [SETUP] appears in the front panel display of the control box.
- 2 Turn on the TV. If the [Speaker connection check] screen does not appear on the TV screen, change the TV input setting to the input that the speaker system is connected.
- 3 Check that the connection between the control box and 4 speakers is completed on the TV screen. The control box and speakers are connected automatically. The sound for connection completion is output after the check marks appear on all the speakers. The power indicator of the speaker lights in green when connecting to the control box.

Note

- To use the speaker system, point the remote control at the front of the control box.
- Depending on the order in which you turn on the TV and the speaker system, the speaker system may be muted and [MUTING] may appear on the front panel display of the control box. If this happens, turn off all devices, and then turn on the TV first, then the speaker system.
- If you connect the TV center speaker mode cable (supplied) to the control box and your TV, follow the instructions on the TV screen for the settings after Step 6.

7 Perform Initial Settings

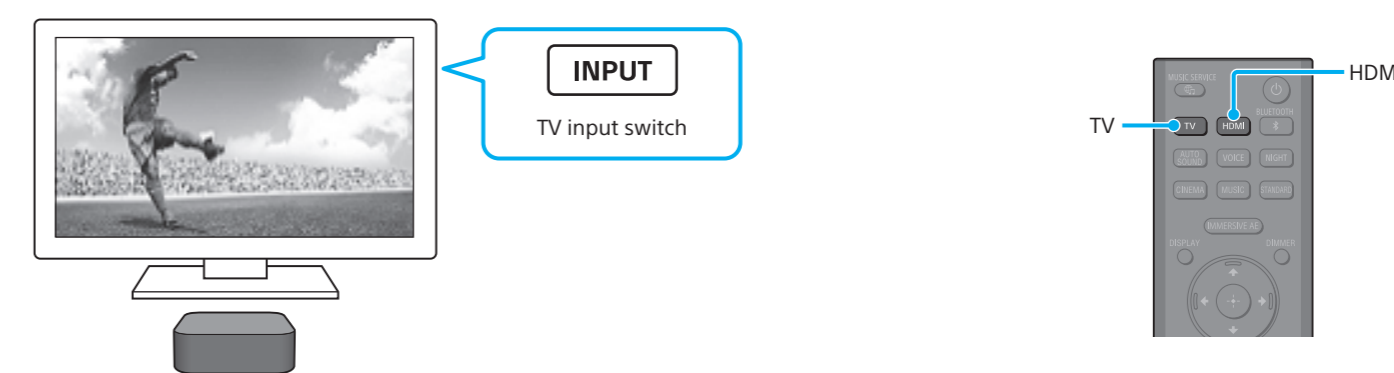


- 1 Press / / and to select an item by following the on-screen instructions. When the Sound Field Optimization is complete and you have finished listening to the demo music, press [Next] to continue network settings.
- 2 Once [Setup is complete.] appears, select [Finish].

Note

- During the Sound Field Optimization, a measurement sound is output for about 1 minute.
- The speaker system does not output sound until the connection between the control box and 4 speakers is completed.

8 Listen to sound



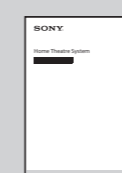
Listen to TV Audio

- 1 Select the desired input to the TV using the TV remote control. The screen switches to the selected input screen and TV audio is output from the speaker system. If [TV] does not appear in the front panel display of the control box, press TV on the remote control of the speaker system to select the TV input. [TV] appears in the front panel display of the control box.

Listen to audio of another device connected to the HDMI IN jack on the control box

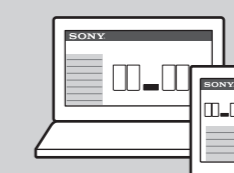
- 1 Turn on the connected device. Then use the TV's remote control to switch the TV's input to HDMI input to which the speaker system is connected.
- 2 Press HDMI on the remote control of the speaker system to switch to HDMI input. [HDMI] appears in the front panel display of the control box and the audio of the connected device is output from the speaker system.

How to use the speaker system / Troubleshooting



Operating Instructions (booklet)

Describes basic usage such as installation/connection and playback of connected devices.



Help Guide (Web instruction manual)

Describes all the usage such as the network function and the detailed setting method, including the contents of the Operating Instructions.

https://rd1.sony.net/help/ht/a9/h_zz/



For troubleshooting when the speaker system does not operate correctly, see "Troubleshooting" in the Operating Instructions or Help Guide.