

# Noise Canceling Headphones Casque réducteur de bruits

Operating Instructions  
Mode d'emploi  
Manual de instrucciones

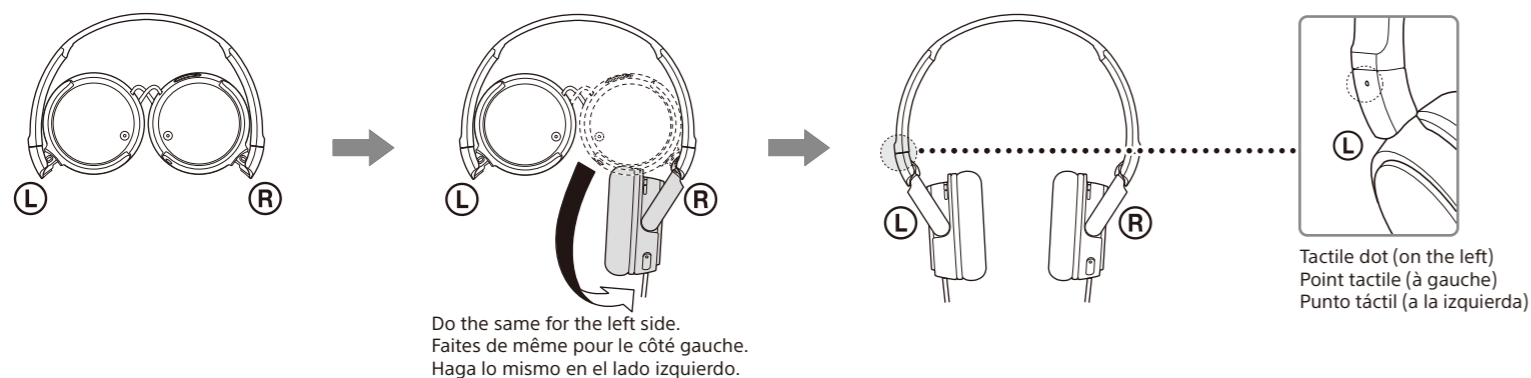


© 2014 Sony Corporation Printed in China  
Imprimé en Chine

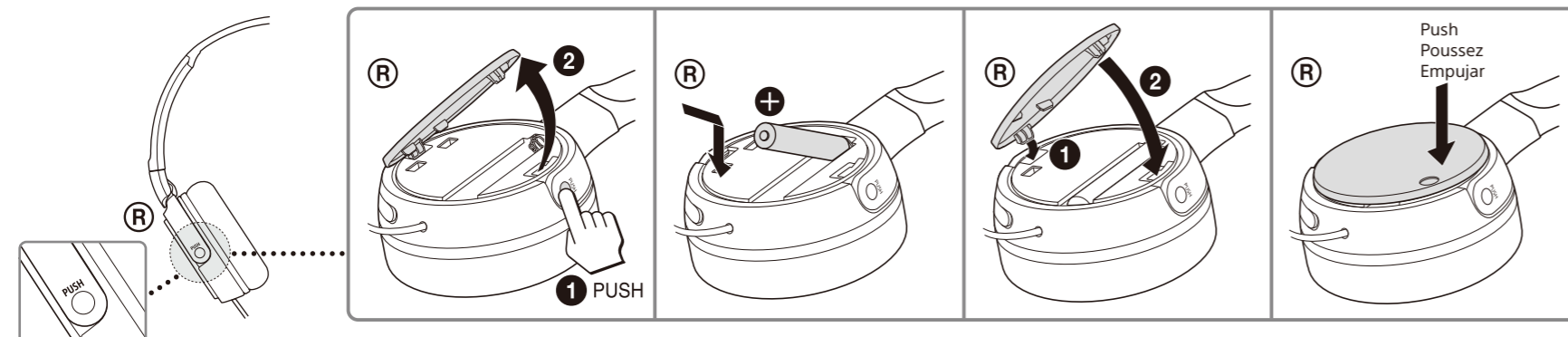
MDR-ZX110NC

## How to use/Mode d'utilisation/Modo de uso

### 1 Unfolding the headphones/Dépliage du casque/Desplegar los auriculares

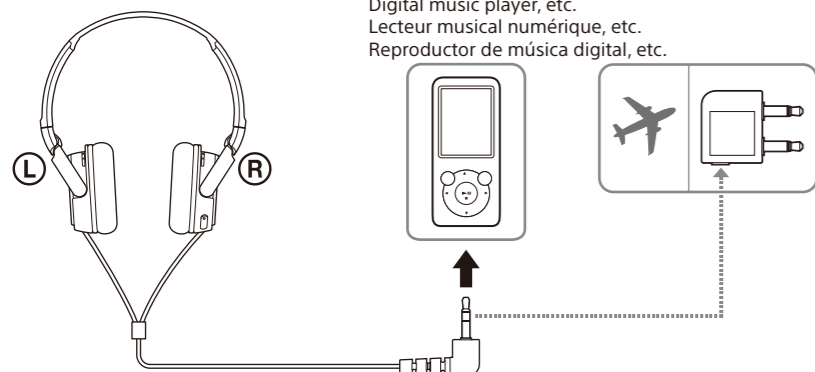


### 2 Installing a battery/Installation d'une pile/Colocación de la pila

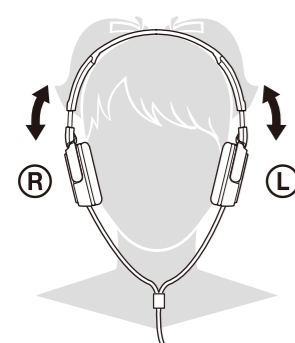


### 3 Connecting/Raccordement/Conexión

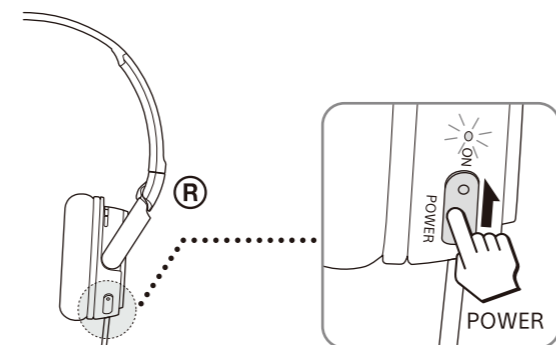
Digital music player, etc.  
Lecteur musical numérique, etc.  
Reproductor de música digital, etc.



### 5 Wearing/Port/Colocación



### 4 Turning on the power/Mise sous tension/Encendido



**After use**  
Turn off the power of the headphones  
**Après utilisation**  
Éteignez le casque  
**Después del uso**  
Apague los auriculares

English Noise Canceling Headphones

## WARNING

You are cautioned that any changes or modifications not expressly approved in this manual could void your authority to operate this equipment.

**FOR UNITED STATES CUSTOMERS. NOT APPLICABLE IN CANADA, INCLUDING IN THE PROVINCE OF QUEBEC.**  
**POUR LES CONSOMMATEURS AUX ÉTATS-UNIS. NON APPLICABLE AU CANADA, Y COMPRIS LA PROVINCE DE QUÉBEC.**

The following FCC statement applies only to the version of this model manufactured for sale in the USA. Other versions may not comply with FCC technical regulations.

This device complies with Part 15 of the FCC Rules. Operation is subject to the following two conditions:  
(1) this device may not cause harmful interference, and  
(2) this device must accept any interference received, including interference that may cause undesired operation.

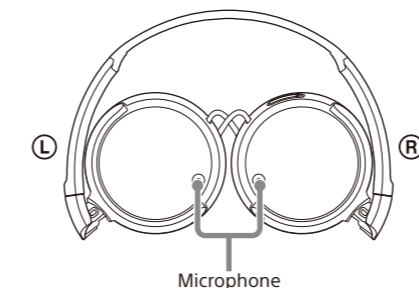
## Notes on use

### What is noise canceling?

The noise canceling circuit actually senses outside noise with built-in microphones and sends an equal-but-opposite canceling signal to the headphones.

### Notes on the noise canceling function

- Adjust the earpads so that they cover your ears, otherwise noise canceling will not function properly.
- The noise canceling effect may vary depending on how you wear the headphones.
- Do not cover the microphone of the headphones with your hands. The noise canceling function may not work properly.



- After you turn on the power of the headphones, you may hear a slight hiss. This is the operating sound of the noise canceling function, not a malfunction.
- The noise canceling function works for noise in the low frequency band primarily. Although noise is reduced, it is not canceled completely.
- The noise canceling effect may not be pronounced in a very quiet environment, or some noise may be heard.
- When you use the headphones in a train or a car, noise may occur depending on street conditions.
- Mobile phones may cause interference and noise. Should this occur, locate the headphones further away from the mobile phone.

### Notes on using on the airplane

Do not use the headphones when use of electronic equipment is prohibited or when use of personal headphones for in-flight entertainment services is prohibited.

### Notes on handling

- Because the headphones are designed to fit closely in your ears, forcing them against your ears may result in eardrum damage. Avoid using the headphones where they are liable to be struck by people or other objects, such as a ball, etc.
- Pressing the headphones against your ears may produce a diaphragm click sound. This is not a malfunction.
- Clean the headphones with a soft dry cloth.
- Do not leave the plug dirty otherwise the sound may be distorted.
- Be sure to consult a Sony dealer when the earpads become dirty or damaged, or when the headphones require repair work.
- Do not leave the headphones in a location subject to direct sunlight, heat or moisture.
- Do not subject the headphones to excessive shock.
- Handle the driver units carefully.

If you feel drowsy or sick while using this headphones, stop use immediately.

### Notes on headphones

- High volume may adversely affect your hearing. Do not use the unit while walking, driving, or cycling. Doing so may cause traffic accidents.
- Do not use in hazardous areas unless the surrounding sound can be heard.

### Preventing hearing damage

Avoid using headphones at high volume. Hearing experts advise against continuous, loud and extended play. If you experience a ringing in your ears, reduce the volume or discontinue use.

The unit is not waterproof. If water or foreign matter enters the unit, it may result in fire or electric shock. If water or foreign matter enters the unit, stop use immediately and consult your nearest Sony dealer. In particular, be careful in the following cases.

- When using the unit near a sink or liquid container  
Be careful that the unit does not fall into a sink or container filled with water.
- When using the unit in the rain or snow, or in humid locations
- When using the unit while you are perspiring  
If you touch the unit with wet hands, or put the unit in the pocket of a damp article of clothing, the unit may get wet.

### Note about static electricity

If you use the unit when the air is dry, you may experience discomfort due to static electricity accumulated on your body. This is not a malfunction of the unit. You can reduce the effect by wearing clothes made of natural materials that do not easily generate static electricity.

If you have any questions or problems concerning the system that are not covered in this manual, please consult the nearest Sony dealer.

## Troubleshooting

### No sound

- Check the connection of the headphones and the equipment.
- Check that the connected equipment is turned on.
- Turn up the volume of the connected equipment.
- Clean the plug of the headphones with a soft dry cloth.

### The noise canceling effect is not sufficient

- The noise canceling function is effective in low frequency ranges such as airplanes, trains, or offices (near air-conditioning, etc.) and is not as effective for higher frequencies, such as human voices.
- Turn on the headphones.

### Distorted sound

- Turn down the volume of the connected equipment.
- Clean the plug of the headphones with a soft dry cloth.

### Power does not turn on

- Check if the battery has expired (the POWER indicator lights off) and the battery is inserted in the correct orientation. Replace the battery with a new one or reinsert the battery in the correct orientation.

### No operation works

- Set the POWER switch of the headphones to "OFF", confirm the connections, and then set the POWER switch back to "ON".

## Features

- 95% Ambient Noise Reduction  
Noise canceling headphones reduce unwanted ambient noise and provide a quieter environment to enhance your listening experience.
- Quick folding style  
Original compact folding mechanism for easy carriage and storage.
- Producing balanced, clear and powerful high quality sound  
300 kJ/m<sup>3</sup> Neodymium magnet delivers powerful sound and equalizer provides balanced sound from bass to high note.
- Able to use as a regular headphones even when the POWER switch is set to "OFF".
- Long battery life - approx. 80 hours with AAA alkaline battery.

## Specifications

### General

|                                             |                                                                                |
|---------------------------------------------|--------------------------------------------------------------------------------|
| Type                                        | Dynamic, closed                                                                |
| Driver units                                | 30 mm, dome type (CCAW adopted)                                                |
| Maximum input                               | 28 mW                                                                          |
| Impedance                                   | 220 Ω at 1 kHz (when the power is on)<br>45 Ω at 1 kHz (when the power is off) |
| Sensitivity                                 | 115 dB/mW (when the power is on)<br>110 dB/mW (when the power is off)          |
| Frequency response                          | 10 Hz – 22,000 Hz                                                              |
| Total Noise Suppression Ratio <sup>1)</sup> | Approx. 13 dB <sup>2)</sup>                                                    |
| Cable                                       | Approx. 1.2 m (47 1/4 in), OFC Litz wire                                       |
| Plug                                        | L-shaped gold-plated stereo mini plug                                          |
| Power source                                | DC 1.5 V, 1 × R03 (size AAA) battery                                           |
| Mass                                        | Approx. 150 g (5.3 oz) including battery, not including cable                  |

### Battery life

| Battery                                | Approx. hours <sup>3)</sup> |
|----------------------------------------|-----------------------------|
| Sony alkaline battery<br>LR03 SIZE AAA | 80 hours <sup>4)</sup>      |
| Sony manganese battery<br>R03 SIZE AAA | 40 hours <sup>4)</sup>      |

### Note

The supplied battery was included in the package during manufacturing (as a convenience to the user), it is possible that the battery life may be depleted by the time of purchase. The actual life of the supplied battery may be shorter than the standard time described in this manual when using a fresh battery.

### When the battery is low

Replace the battery with a new one when the POWER indicator blinks or lights off.

### Notes

- The sound and noise canceling effect may become intermittent when the battery is low.
- The headphones will automatically switch to passive mode when the battery power is empty. You might hear the sound characteristics change in this mode.

### Included items

Headphones (1)  
Plug adaptor for in-flight use<sup>5)</sup> (1)  
Sony R03 (SIZE AAA) battery (1)  
Operating Instructions (1)  
Warranty card (1)

<sup>1)</sup> Under the Sony measurement standard.

<sup>2)</sup> Equivalent to approx. 95% reduction of energy of sound compared with not wearing headphones.

<sup>3)</sup> At 1 kHz, 0.1 mW + 0.1 mW output

<sup>4)</sup> Time stated above may vary, depending on the temperature or conditions of use.

<sup>5)</sup> May not be compatible with some in-flight entertainment services.

Design and specifications are subject to change without notice.

