

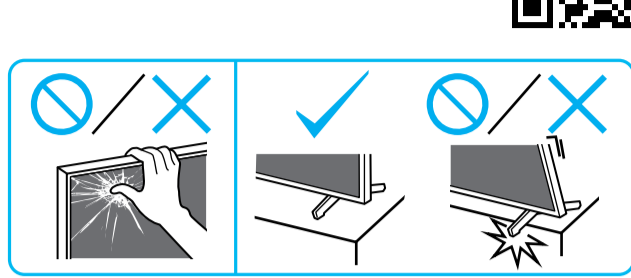
# Setup Guide

Өнім атауы: Теледидар

5-037-714-31(1)



EE	Seadistusjuhend	SI	Priločnik za pripravo
LV	Uzsākšanas ceļvedis	KZ	Орнату нұсқаулығы
LT	Nustatymo vadovas	SR	Vodič za podešavanje
HR	Vodič za postavljanje	HE	מדריך הברירה



**1**

Parts list: SB1, IM, R03, LR03, SB2, VS, \*1, \*2

Box opening diagram: 1 (bottom flap), 2 (top flap)

\*2 1.5 N·m/1,5 N·m (15 kgf·cm)

**2**

Diagram showing two people lifting the TV out of the box. Includes safety icons for correct and incorrect lifting techniques.

**3**

Diagram showing two people tilting the TV away from the box.

**4**

Diagram showing the attachment of stand SB1 and SB2 to the TV back. Includes torque specifications and safety warnings.

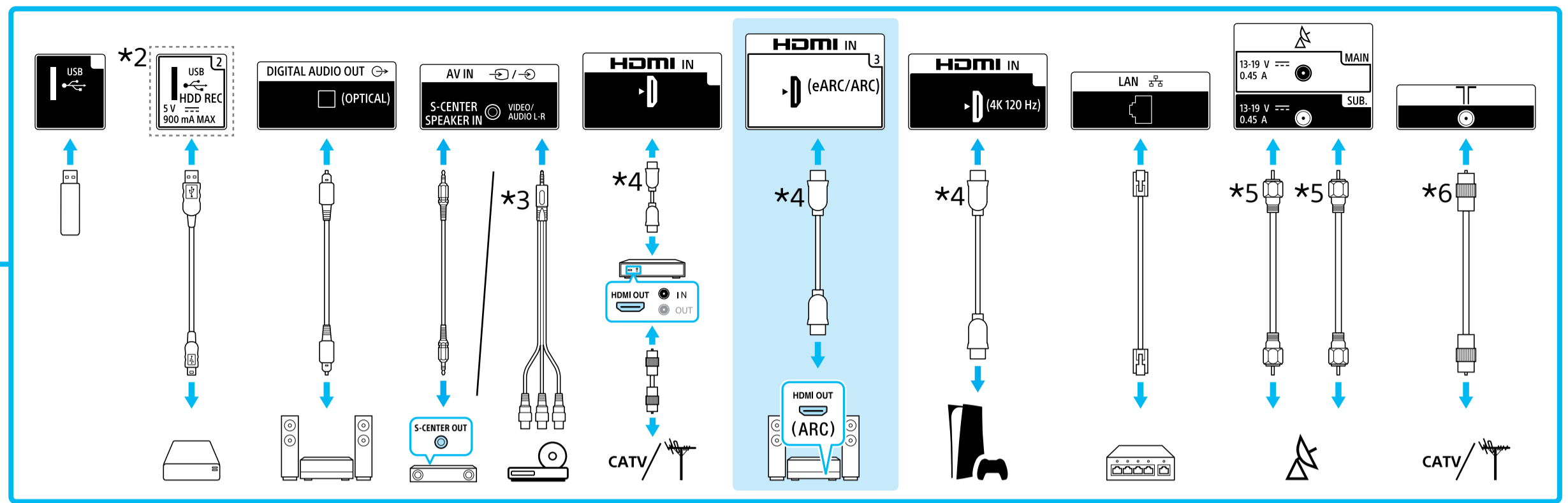
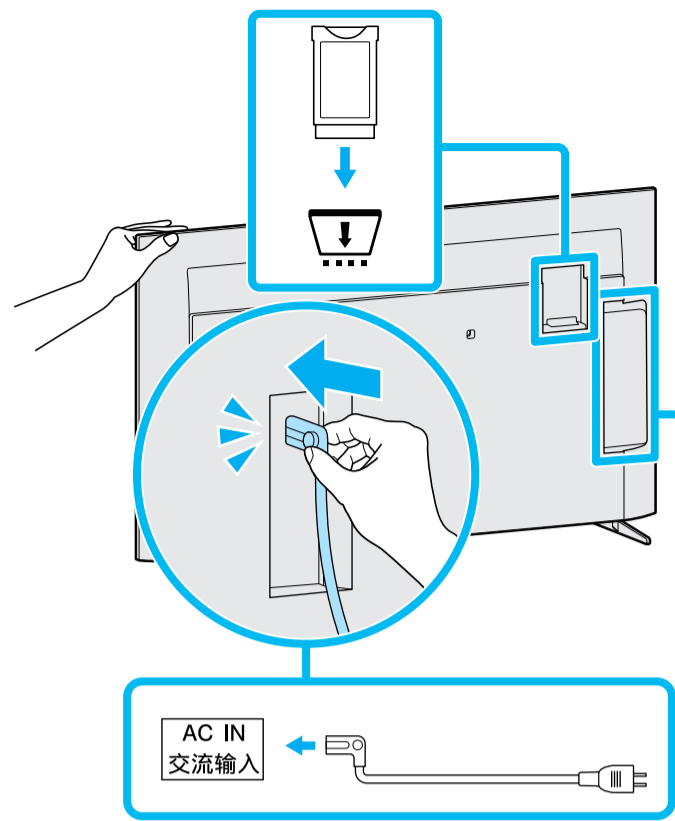
Diagram showing the attachment of stand SB1 and SB2 to the TV back. Includes torque specifications and safety warnings.

\*1 Vt Teatmikku / Skatiet atsauce ceļvedi / Žr. trumpāji vadovā. / Pogledajte Referentni vodič / Glejte referenčni priročnik / Анықтама нұсқаулығын қараңыз / Pogledajte Referentni vodič / עיינו במדריך הייני

\*2 Ainult teatud piirkondade/riikide/mudelite jaoks. / Tikai dažiem reģioniem/valstīm/modelēm. / Tik kai kuriuose regionuose / šalyse / modeliuose. / Samo za određenu regiju/zemlju/model. / Samo za omejene regije/države/modele. / Тек шектеулі аймақтарда/елдерде/үлгілерде. / Samo za ograničen region/zemlju/model. / רק באזורים/במדינות/בדגמים מסוימים



5



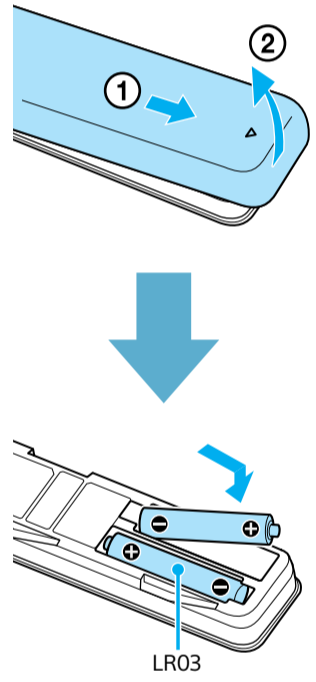
**\*3** 3.5/3.5 (mm) 1 2 3 4  
 1: L  
 2: Video / Vaizdo medžiaga / Бейне / ویدئو  
 3: GND  
 4: R

**\*4** < 21 (mm) < 12 (mm)

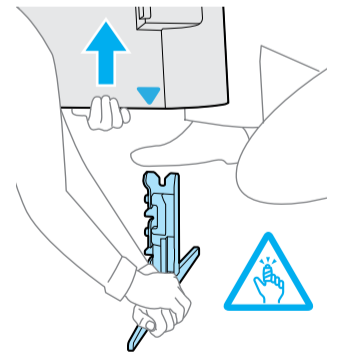
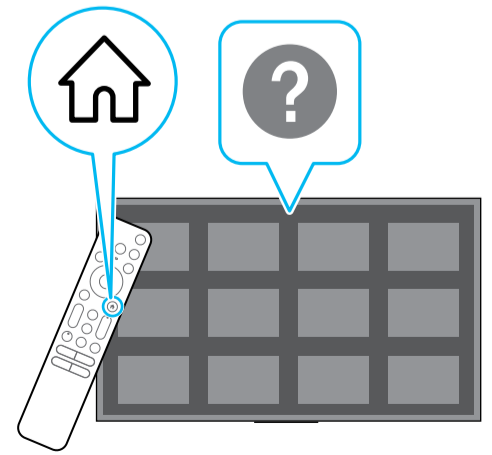
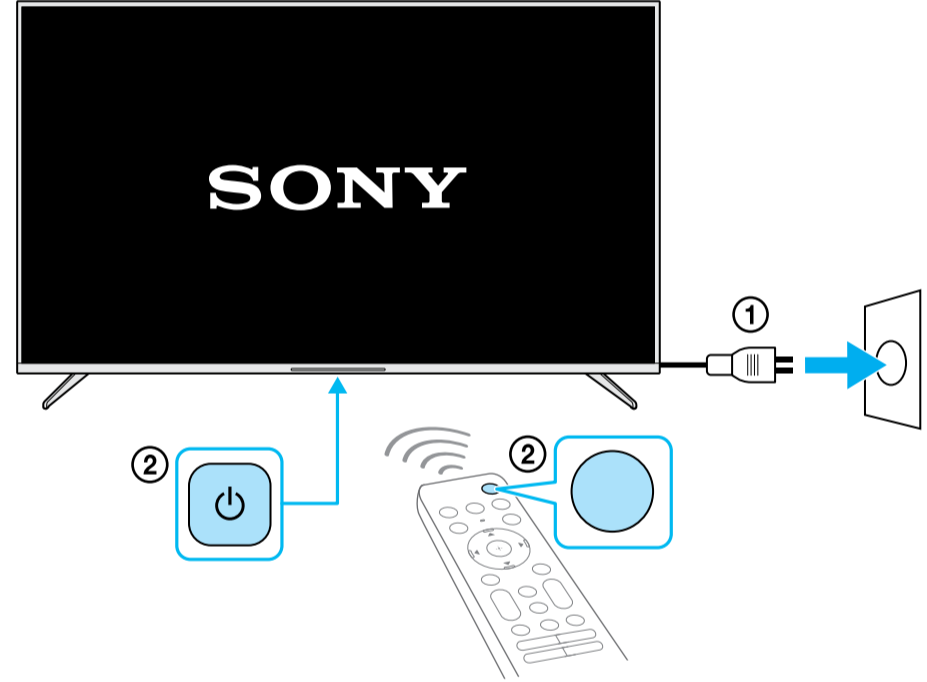
**\*5** < 7 (mm) < 1.5/1.5 (mm)

**\*6** < 14 (mm) (mm) / (mm) / (مم)

6



7



<https://www.sony.eu/support>