



We use environmentally conscious packaging materials

Environmentally conscious packaging materials were used for the camera and supplied accessories.

Note the following due to the characteristics of the packaging materials.

- Powder, etc. from the packaging materials may adhere to the camera or supplied accessories. In this case, remove it with a commercially available blower or cleaning paper before use.
- The packaging materials will deteriorate with continuous use. Be careful when carrying the product by the packaging.

About the manual for this camera



"Help Guide" (Web manual)

https://rd1.sony.net/help/dc/2210/h_zz/

ZV-1F Help Guide



This guide describes the necessary preparations to start using the product, basic operations, etc. For details, refer to the "Help Guide" (web manual).

Looking for valuable information, such as essential points on shooting

This website introduces convenient functions, ways of usage, and setting examples.

Refer to the website when you set up your camera.



Tutorials

<https://www.sony.net/tutorial/dc/zv1f/>

Preparations

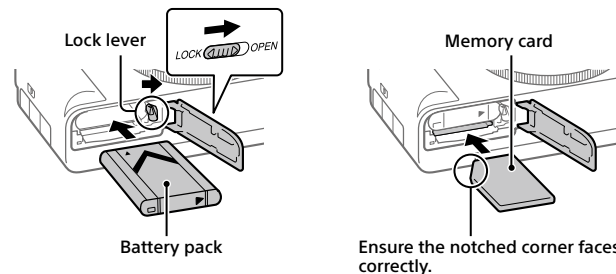
Checking the supplied items

The number in parentheses indicates the number of pieces.

- Camera (1)
- Rechargeable battery pack NP-BX1 (1)
- USB Type-C® cable (1)
- Wind screen (1) (attached to the wind screen adaptor)
- Wind screen adaptor (1)
- Lens cap (1) (attached to the camera)
- Startup Guide (this manual) (1)
- Reference Guide (1)

Inserting the battery pack (supplied)/memory card (sold separately) into the camera

Open the battery/memory card cover, and insert the battery pack and a memory card into the camera. Then, close the cover.



Battery pack

Make sure that the battery pack is facing in the correct direction, and insert it while pressing the battery lock lever.

Memory card

Insert the memory card with the notched corner facing as illustrated.

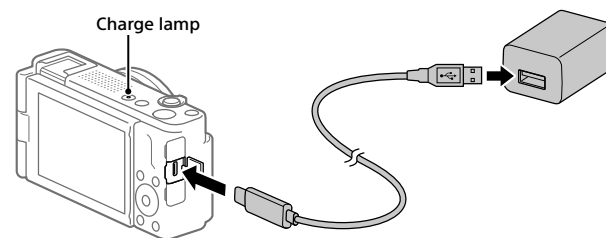
This camera is compatible with SD memory cards or Memory Stick media. For details on the compatible memory cards, refer to the "Help Guide."

When you use a memory card with this camera for the first time, format the card using the camera in order to stabilize the performance of the memory card.

Note

- Formatting erases all data, including protected images. Once erased, this data cannot be restored. Save valuable data to a computer, etc. before formatting.

Charging the battery pack



1 Turn the power off.

If the camera is turned on, the battery pack will not be charged.

2 Using a USB Type-C cable (supplied), connect the USB Type-C terminal of the camera to an external power source, such as a commercially available USB AC adapter or mobile battery.

The charge lamp will light up when charging starts. When the charge lamp turns off, charging is completed.

Performing initial setup for the camera

By connecting the camera and a smartphone with the Bluetooth function, you can perform initial camera setup such as date and time settings from the smartphone. Install the dedicated smartphone application on your smartphone in advance.

Install the dedicated smartphone application from the following webpage. Also, update to the latest version of the application.



<https://www.sony.net/ca/>

1 Press the ON/OFF (Power) button to turn on the camera.

2 Select the desired language and then press the center of the control wheel.

- The privacy notice screen will appear. Read the privacy notice regarding biometrics by opening the link using your smartphone, etc.

3 Press the center of the control wheel.

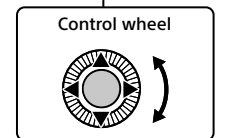
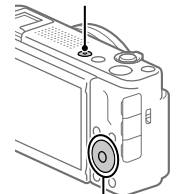
4 Follow the instructions on the camera screen to register your smartphone.

- Launch the dedicated application on your smartphone to pair the camera with your smartphone.
- If you select to register your smartphone later, the area/date/time setting screen will appear.
- To register your smartphone to the camera after the initial setup, select MENU → (Network) → [Smartphone Connect] → [Smartphone Regist.].

5 Perform the initial camera setup on the screen of the dedicated application.

- Follow the instructions on the screen to set the following items.
 - Area/Date/Time
 - Auto Power OFF Temp.
 - Device Name
 You can change these settings later from the camera menu.

ON/OFF (Power) button



Select items : ▲/▼/◀/▶/↶/↷
Confirm : Center button

Shooting

Shooting movies

1 Press the Still/Movie/S&Q button to select the movie recording mode.

Each time you press the button, the shooting mode switches in the order of still image shooting mode, movie recording mode, and slow-motion/quick-motion shooting mode.

2 Press the MENU button and select (Shooting) → [Shooting Mode] → [Shoot Mode] → the desired shooting mode.

3 Press the MOVIE (Movie) button to start recording.

4 Press the MOVIE (Movie) button again to stop recording.

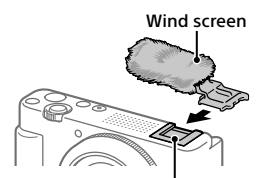
Hint

- The start/stop movie recording function is assigned to the MOVIE (Movie) button in the default settings. Even without switching shooting modes in Step 1, you can start movie recording from still image shooting mode by pressing the MOVIE (Movie) button.

Using the wind screen (supplied)

Use the wind screen to reduce wind noise picked up by the internal microphone when recording a movie.

Attach the wind screen to the Accessory Shoe.





Shooting still images

1 Press the Still/Movie/S&Q button to select the still image shooting mode.

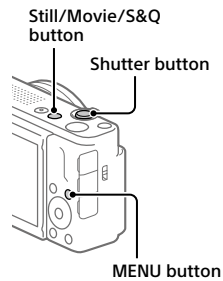
Each time you press the button, the shooting mode switches in the order of still image shooting mode, movie recording mode, and slow-motion/quick-motion shooting mode.

2 Press the MENU button and select

 (Shooting) → [Shooting Mode] →  Shoot Mode] → the desired shooting mode.

3 Press the shutter button halfway down to focus.

4 Press the shutter button all the way down.



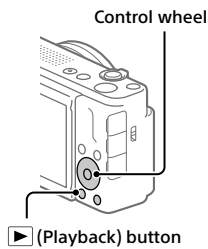
Viewing

1 Press the (Playback) button to switch to the playback mode.

2 Select an image with the control wheel.

You can move to the previous image/next image by pressing the left/right side of the control wheel.

To start playing back a movie, press the center button on the control wheel.



About the dedicated smartphone application

By using the dedicated smartphone application, you can transfer images to the smartphone and view images stored on the camera on the smartphone.

To use the dedicated application, you need to pair the camera with your smartphone.

For details on the pairing method, refer to the following Help Guide (Web manual) URL:



https://rd1.sony.net/help/dc/2210_pairing/h_zz/

Note

- The name, operating method, screen display, etc. of the dedicated application may change without notice due to future version upgrades.

Notes on use

Refer to “Precautions” in the “Help Guide” as well.

Notes on handling the product

- This camera is designed to be dust-and moisture-resistant, but is not waterproof or dust-proof.
- Do not leave the lens exposed to a strong light source such as sunlight. Because of the lens's condensing function, doing so may cause smoke, fire, or a malfunction inside the camera body or the lens. If you have to leave the camera exposed to a light source such as sunlight, attach the lens cap to the lens.
- If sunlight or other strong light enters the camera through the lens, it may focus inside the camera and cause smoke or fire. Attach the lens cap when storing the camera. When shooting with backlighting, keep the sun sufficiently far away from the angle of view. Even if it is slightly away from the angle of view, smoke or fire may still occur.
- Do not directly expose the lens to beams such as laser beams. That may damage the image sensor and cause the camera to malfunction.
- This camera (including accessories) has magnet(s) which may interfere with pacemakers, programmable shunt valves for hydrocephalus treatment, or other medical devices. Do not place this camera close to persons who use such medical devices. Consult your doctor before using this camera if you use any such medical device.
- This camera is equipped with a magnetic sensor. If the camera is placed too close to a magnet or a device with an internal magnet, the camera may turn on. Take care not to place the camera near any magnetic devices.
- Increase the volume gradually. Sudden loud noises can damage your ears.
- Do not leave the camera, the supplied accessories, or memory cards within the reach of infants. They may be accidentally swallowed. If this occurs, consult a doctor immediately.

Notes on the monitor

- The monitor is manufactured using extremely high-precision technology, and over 99.99% of the pixels are operational for effective use. However, there may be some small black dots and/or bright dots (white, red, blue or green in color) that constantly appear on the monitor. These are imperfections due to the manufacturing process and do not affect the recorded images in any way.
- If the monitor is damaged, stop using the camera immediately. The damaged parts may harm your hands, face, etc.

Notes on continuous shooting

When shooting still images continuously, the monitor may flash between the shooting screen and a black screen. If you keep watching the screen in this situation, you may experience uncomfortable symptoms such as feeling of unwellness. If you experience uncomfortable symptoms, stop using the camera, and consult your doctor as necessary.

Notes on recording for long periods of time or recording 4K movies

- Depending on the camera and battery temperature, the camera may become unable to record movies or the power may turn off automatically to protect the camera. A message will be displayed on the screen before the power turns off or you can no longer record movies. In this case, leave the power off and wait until the camera and battery temperature goes down. If you turn on the power without letting the camera and battery cool sufficiently, the power may turn off again, or you may still be unable to record movies.
- The camera body and battery may become warm with use – this is normal.
- If the same part of your skin touches the camera for a long period of time while using the camera, even if the camera does not feel hot to you, it may cause symptoms of a low-temperature burn such as redness or blistering. Pay special attention in the following situations and use a tripod, etc.
 - When using the camera in a high temperature environment
 - When someone with poor circulation or impaired skin sensation uses the camera
 - When using the camera with [Auto Power OFF Temp.] set to [High]

Notes on using a tripod

Use a tripod with a screw less than 5.5 mm (7/32 inches) long. Otherwise, you cannot firmly secure the camera, and damage to the camera may occur.

Sony accessories

Using this unit with products from other manufacturers may affect its performance, leading to accidents or malfunction.

Warning on copyrights

Television programs, films, videotapes, and other materials may be copyrighted. Unauthorized recording of such materials may be contrary to the provisions of the copyright laws.

Notes on location information

If you upload and share still images or movies taken with this camera on the Internet while the location information is linked with the dedicated smartphone application, you may accidentally reveal the location information to a third party. To prevent third parties from obtaining your location information, deactivate the [Location Information Linkage] function of the dedicated application.

Notes on discarding or transferring this product to others

Before discarding or transferring this product to others, be sure to perform the following operation to protect private information.

- Select [Setting Reset] → [Initialize].

Notes on discarding or transferring a memory card to others

Executing [Format] or [Delete] on the camera or a computer may not completely delete the data on the memory card. Before transferring a memory card to others, we recommend that you delete the data completely using data deletion software. When discarding a memory card, we recommend that you physically destroy it.

Note on network functions

When you use network functions, unintended third parties on the network may access the camera, depending on the usage environment. For example, unauthorized access to the camera may occur in network environments to which another network device is connected or can connect without permission. Sony bears no responsibility for any loss or damage caused by connecting to such network environments.

How to turn off wireless network functions (Wi-Fi, etc.) temporarily

When you board an airplane, etc., you can turn off all wireless network functions temporarily using [Airplane Mode].

For Customers in the U.S.A. and Canada

This equipment complies with FCC radiation exposure limits set forth for an uncontrolled environment and meets the FCC radio frequency (RF) Exposure Guidelines. This equipment has very low levels of RF energy that is deemed to comply without testing of specific absorption rate (SAR).

The available scientific evidence does not show that any health problems are associated with using low power wireless devices. There is no proof, however, that these low power wireless devices are absolutely safe. Low power Wireless devices emit low levels of radio frequency energy (RF) in the microwave range while being used. Whereas high levels of RF can produce health effects (by heating tissue), exposure of low-level RF that does not produce heating effects causes no known adverse health effects. Many studies of low-level RF exposures have not found any biological effects. Some studies have suggested that some biological effects might occur, but such findings have not been confirmed by additional research.

This equipment has been tested and found to comply with ISED radiation exposure limits set forth for an uncontrolled environment and meets RSS-102 of the ISED radio frequency (RF) Exposure rules.

For Customers in the U.S.A.

For question regarding your product or for the Sony Service Center nearest you, call 1-800-222-SONY (7669) .

Supplier's Declaration of Conformity

Trade Name : SONY
Model : WW145753
Responsible Party : Sony Electronics Inc.
Address : 16535 Via Esprillo, San Diego, CA 92127 U.S.A.
Telephone Number : 858-942-2230

For Customers in Europe

IEEE802.11b/g/n	2 400 MHz	< 60 mW e.i.r.p.
Bluetooth	2 400 MHz	< 10 mW e.i.r.p.

Hereby, Sony Corporation declares that this equipment is in compliance with Directive 2014/53/EU. The full text of the EU declaration of conformity is available at the following internet address: <https://www.compliance.sony.eu>

Hereby, Sony Corporation declares that this equipment is in compliance with the UK relevant statutory requirements. The full text of the declaration of conformity is available at the following internet address: <https://compliance.sony.co.uk>

For Customers in Indonesia

IEEE802.11b/g/n	2 400 MHz
Bluetooth	2 400 MHz

Specifications

Camera

[System]

Camera Type: Digital Camera

[Image sensor]

Image format: 13.2 mm × 8.8 mm (1.0 type), CMOS image sensor

Effective pixel number of camera:

Approx. 20 100 000 pixels

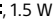
Total pixel number of camera:

Approx. 21 000 000 pixels

[Monitor]

7.5 cm (3.0 type) TFT drive, touch panel

[General]

Rated input: 3.6 V , 1.5 W

Operating temperature:

0 °C to 40 °C (32 °F to 104 °F)

Storage temperature:

-20 °C to 55 °C (-4 °F to 131 °F)

Dimensions (W/H/D) (Approx.):

105.5 × 60.0 × 46.4 mm

(4 1/4 × 2 3/8 × 1 7/8 in.)

Mass (Approx.): 256 g (9.1 oz)

(including battery pack, SD Card)

Trademarks

- USB Type-C® and USB-C® are registered trademarks of USB Implementers Forum.
- Wi-Fi, the Wi-Fi logo and Wi-Fi Protected Setup are registered trademarks or trademarks of the Wi-Fi Alliance.
- The Bluetooth® word mark and logos are registered trademarks owned by Bluetooth SIG, Inc. and any use of such marks by Sony Group Corporation and its subsidiaries is under license.
- QR Code is a trademark of Denso Wave Inc.
- In addition, system and product names used in this manual are, in general, trademarks or registered trademarks of their respective developers or manufacturers. However, the ™ or ® marks may not be used in all cases in this manual.



<https://www.sony.net/SonyInfo/Support/>

Additional information on this product and answers to frequently asked questions can be found at our Customer Support Website.

<https://www.sony.net/>