

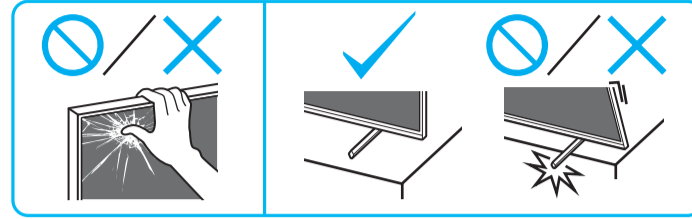
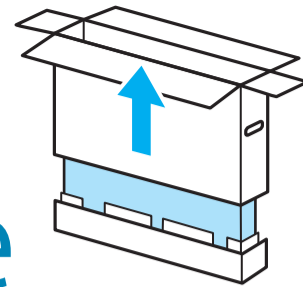
Setup Guide

Өнім атауы: Теледидар

5-048-117-31(1)



EE	Seadistusjuhend	SI	Priložnik za pripravo
LV	Uzsākšanas ceļvedis	KZ	Орнату нұсқаулығы
LT	Nustatymo vadovas	SR	Vodič za podešavanje
HR	Vodič za postavljanje	HE	מדריך הגדרה



1

SB1, SB2, IM, LR03, R03, VS, CC

*1, *2

1.5 N·m / 1,5 N·m (15 kgf·cm)

2

3

A

B

C

SB2, SB1

1, 2, 3

4

*2

5

A

B

C

SB2, SB1

1, 2, 3

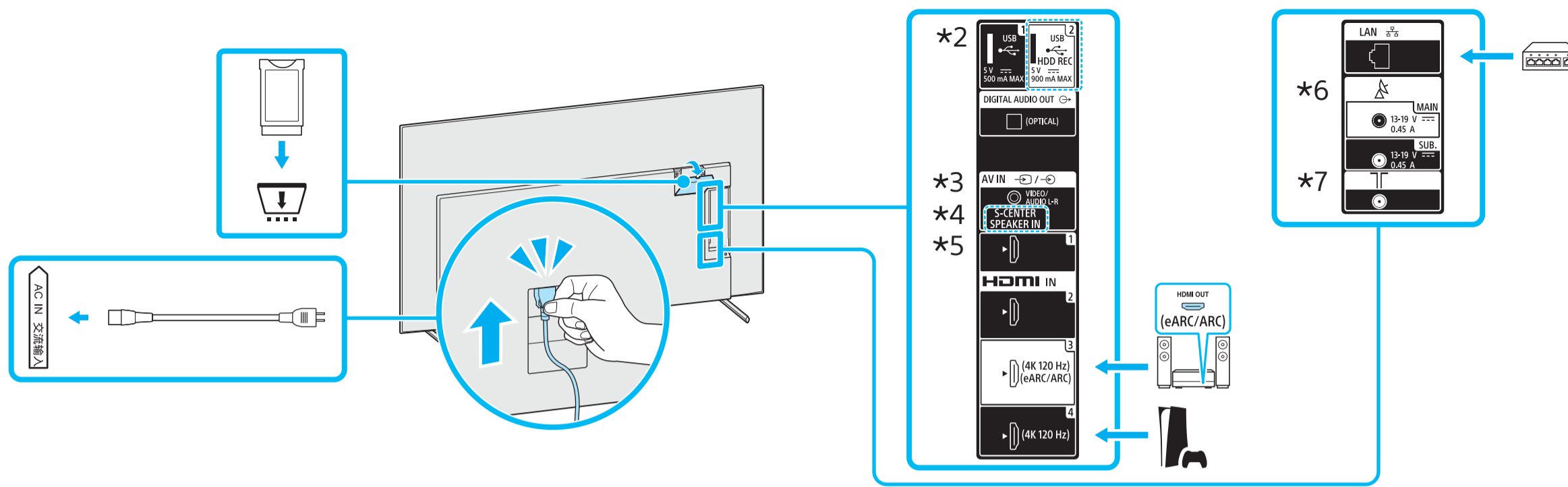
6

*1 Vt Teatmikku / Skatiet atsauces ceļvedi / Žr. trumpāji vadovā. / Pogledajte Referentni vodič / Glejte referenčni priročnik / Анықтама нұсқаулығын қараңыз / Pogledajte Referentni vodič / גיין במדריך העיון

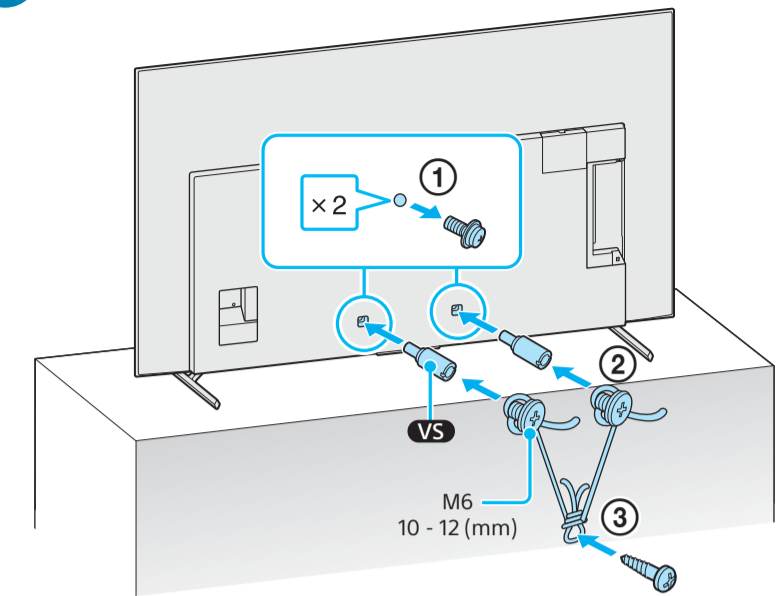
*2 Ainult teatud piirkondade/riikide/mudelite jaoks. / Tikai dažiem reģioniem/valstīm/modeliem. / Tik kai kuriuose regionuose / šalyse / modeliuose. / Samo za određenu regiju/zemlju/model. / Samo za omejene regije/države/modele. / Тек шектеулі аймақтарда/елдерде/үлгілерде. / Samo za ograničen region/zemlju/model. / רק באזורים/במדינות/בדגמים מסוימים.



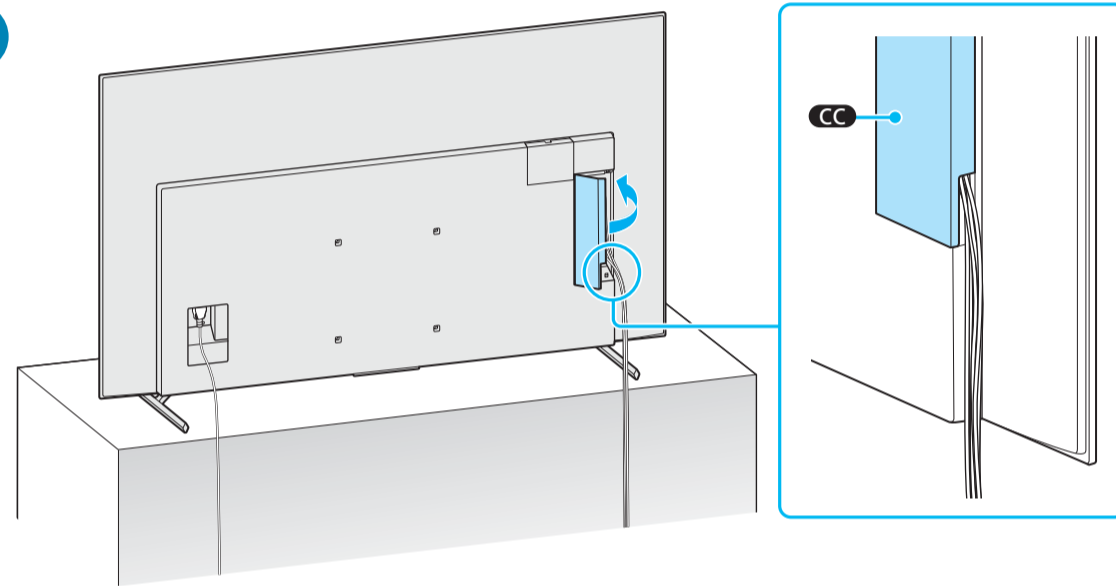
7



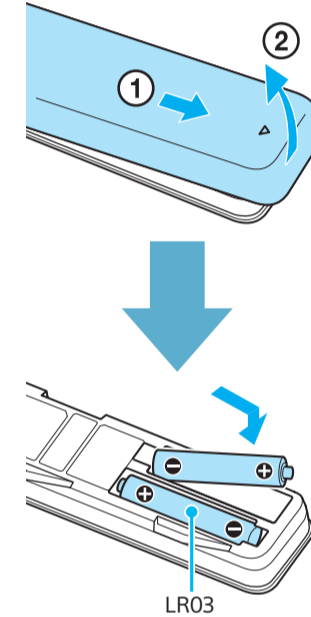
8



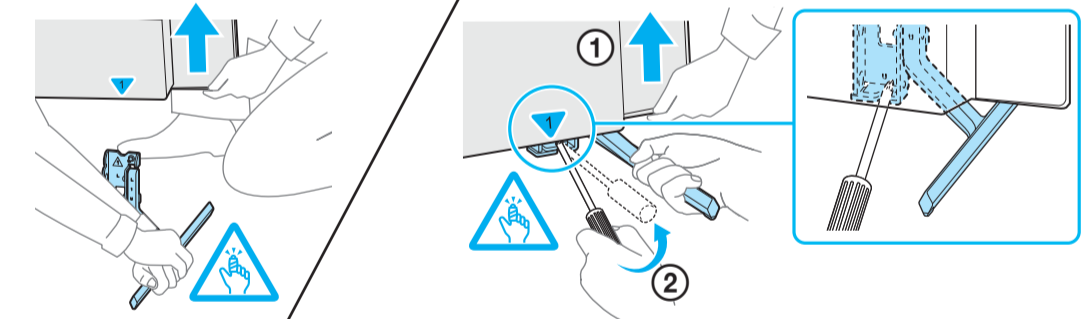
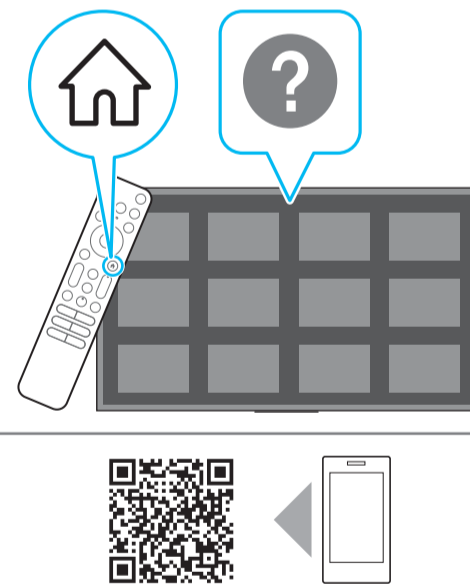
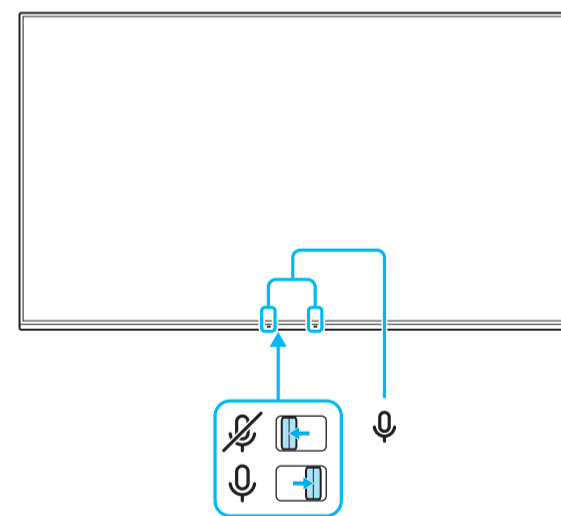
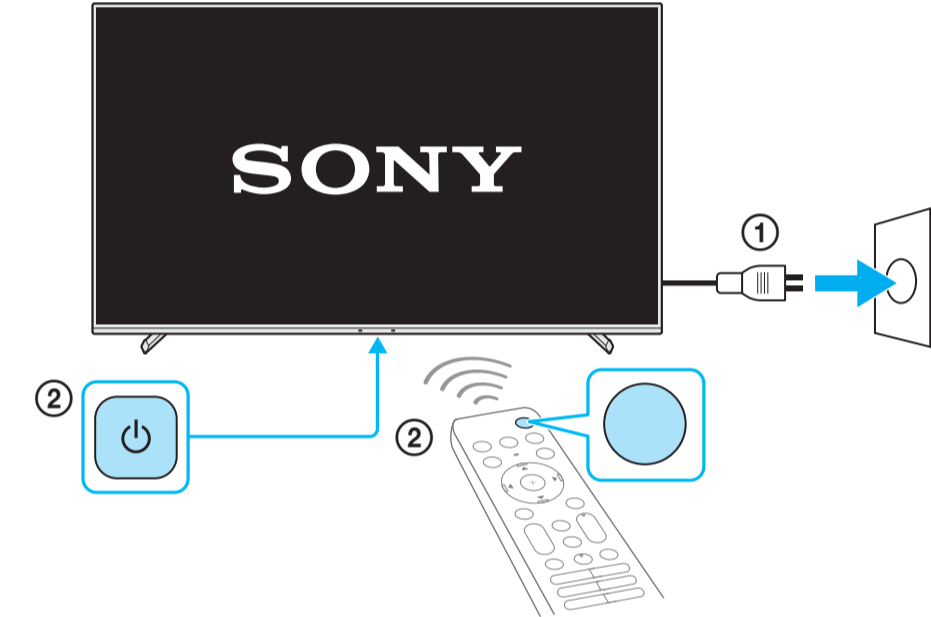
9



10

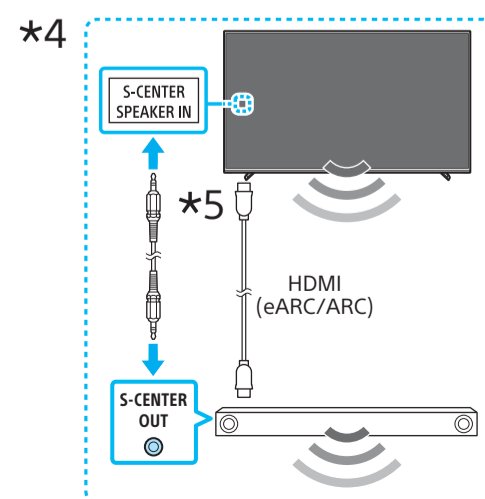


11



<https://www.sony.eu/support>

- *3 3.5/3.5 (mm) 1 2 3 4
- 1: L
- 2: Video / Vaizdo medžiaga / Бейне / וידאו
- 3: GND
- 4: R



- *5 < 21 (mm) < 12 (mm)

- *6 < 7 (mm) < 1.5/1.5 (mm)

- *7 < 14 (mm)

(mm) / (MM) / (מ״מ)