

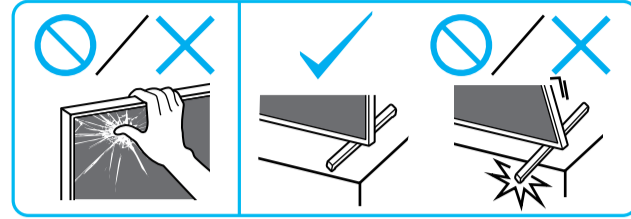
Setup Guide

Өнім атауы: Теледидар

5-048-785-31(1)



EE	Seadistusjuhend	SI	Priločnik za pripravo
LV	Uzsākšanas ceļvedis	KZ	Орнату нұсқаулығы
LT	Nustatymo vadovas	SR	Vodič za podešavanje
HR	Vodič za postavljanje	HE	מדריך התדירה



1

*1 *2

85
75
65

*2 1.5 N·m/1,5 N·m (15 kgf·cm)

2

3

*2

4

5 (A)
5 (B)
5 (C)

5 (A)
5 (B)

5 (A)
5 (B)

85
75
65

*2

5 (A)
5 (B)

85
75
65

5 (C)

5 (C)

85
75
65

*2

5 (C)

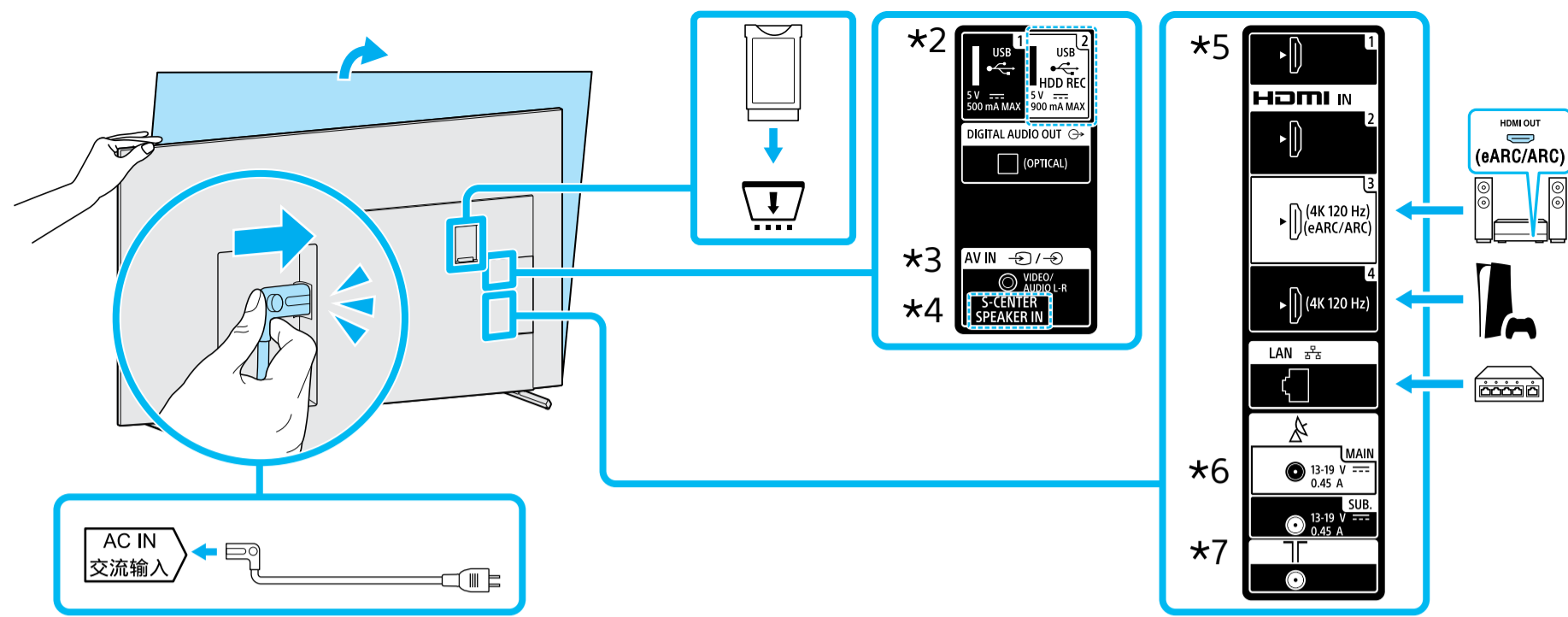
85
75
65

*1 Vt Teatmikku / Skatiet atsaucus ceļvedi / Žr. trūpājā vadovā. / Pogledajte Referentni vodič / Glejte referenčni priročnik / Анықтама нұсқаулығын қараңыз / Pogledajte Referentni vodič / עיין במדריך העיון

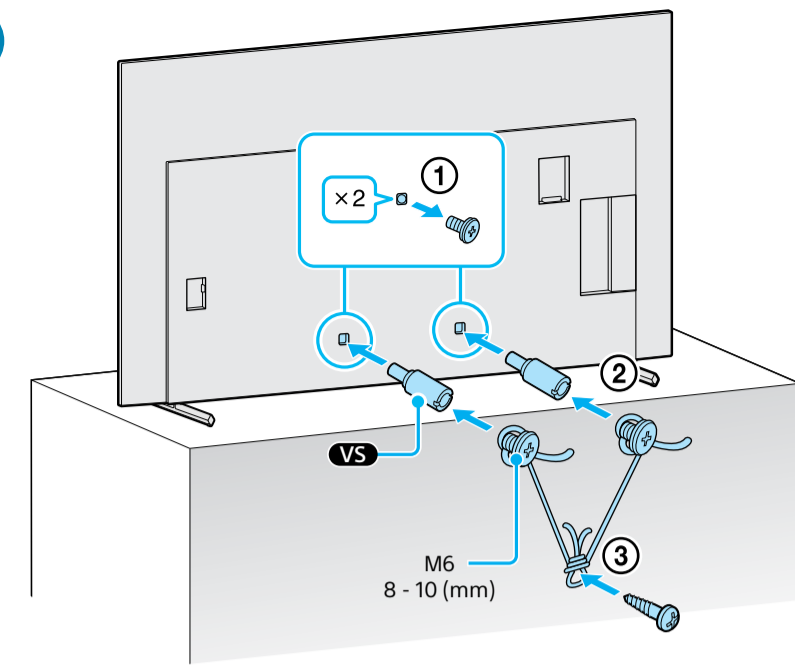
*2 Ainult teatud piirkondade/riikide/mudelite jaoks. / Tikai dažiem reģioniem/valstīm/modeliēm. / Tik kai kuriuose regionuose / šalyse / modeliuose. / Samo za određenu regiju/zemlju/model. / Samo za omejenе regije/države/modele. / Тек шектеулі аймақтарда/елдерде/үлгілерде. / Samo za ograničen region/zemlju/model. / רק באזורים/במדינות/בדגמים מסוימים



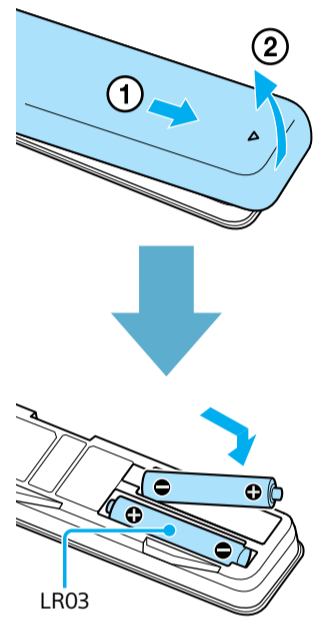
6



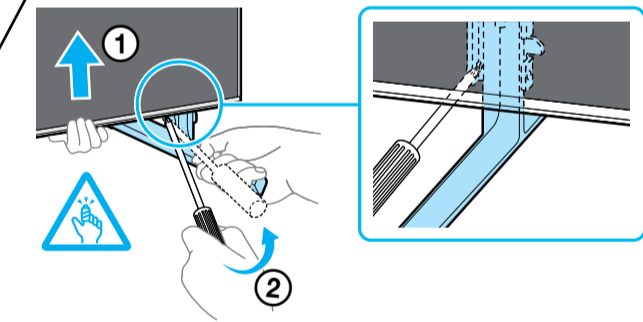
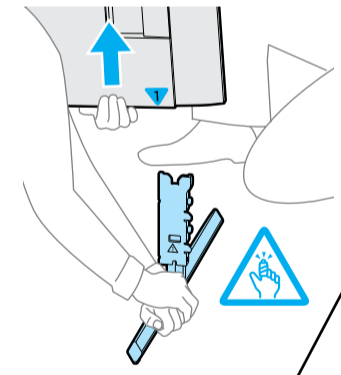
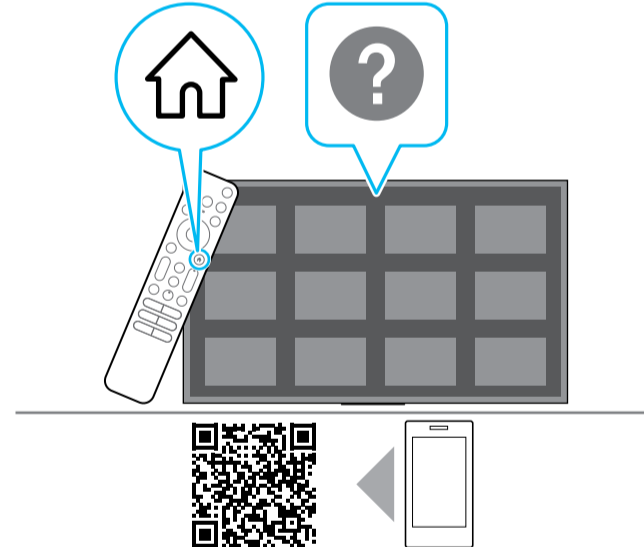
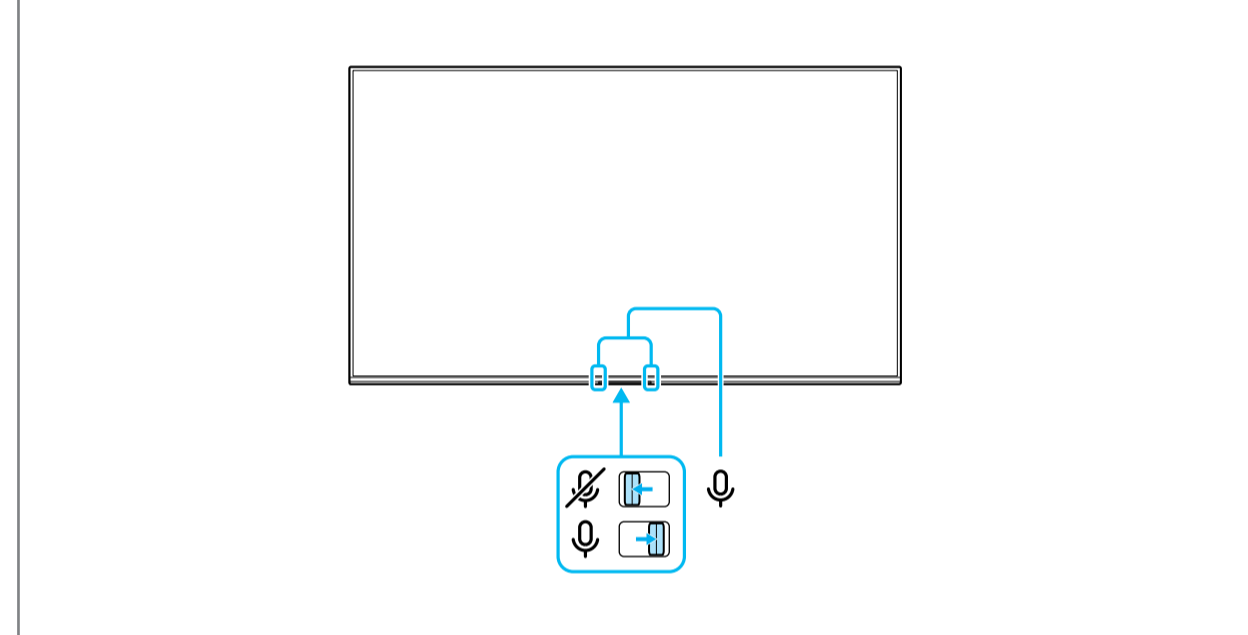
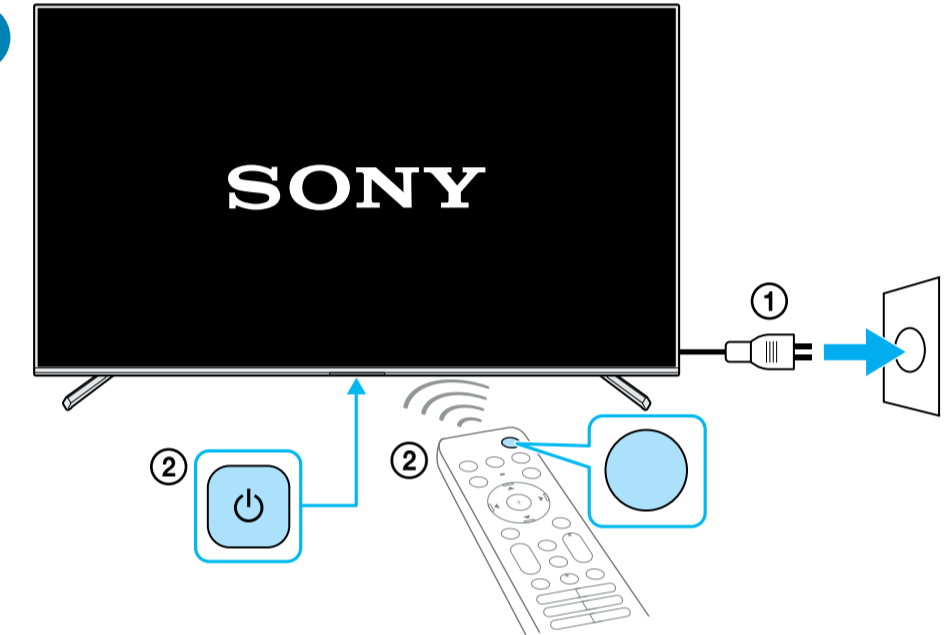
7



8

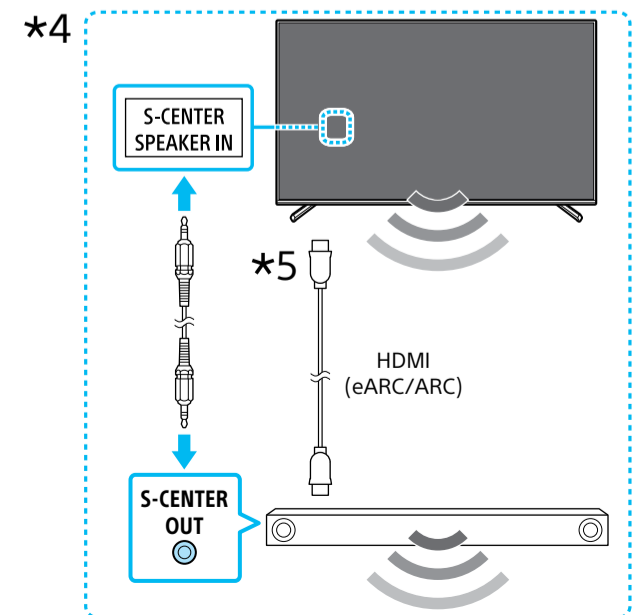


9



<https://www.sony.eu/support>

***3** 3.5/3.5 (mm)
1: L
2: Video / Vaizdo medžiaga / Бейне / 影像
3: GND
4: R



***5** < 21 (mm) / < 12 (mm)
***6** < 7 (mm) / < 1.5/1,5 (mm)
***7** < 14 (mm)

(mm) / (MM) / (mm)