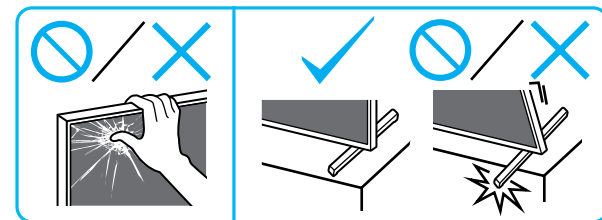
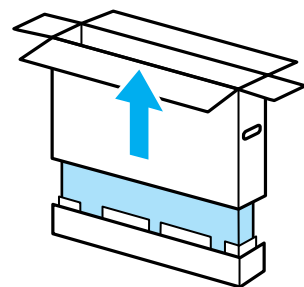


安裝指南

5-048-773-11(1)



1

SB1 IM
SB2 VS M6L12 FB
*1 *1 *2

*2 1.5 N·m/1.5 N·m (15 kgf·cm)

85
75
65
55

2

3

*2

4

5 A

5 B

5 A

① 85 75 65 55

②

SB2

*2

① 85 75 65 55

②

SB1

5 B

① 85 75 65 55

②

SB2

*2

① 85 75 65 55

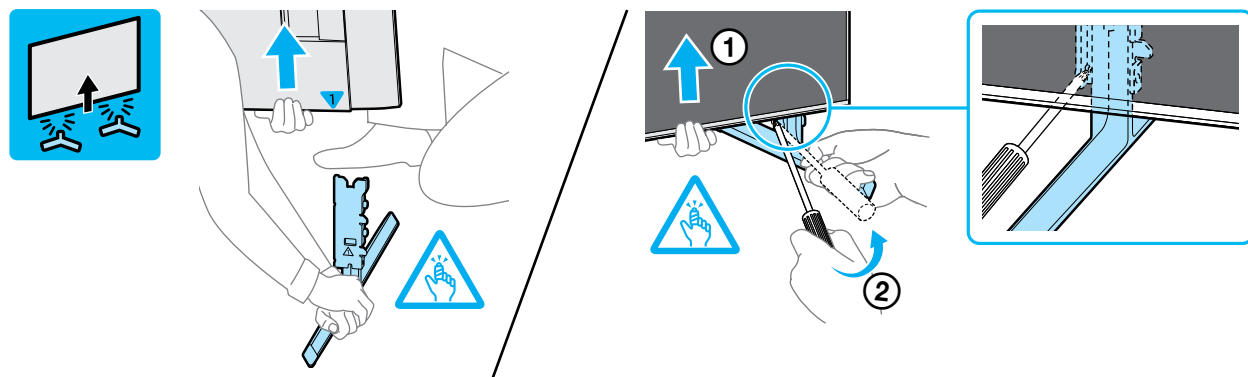
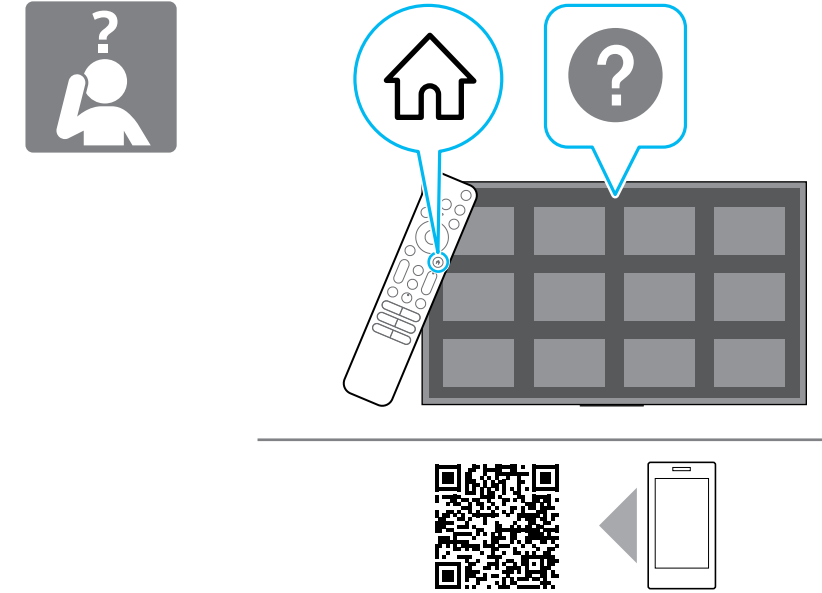
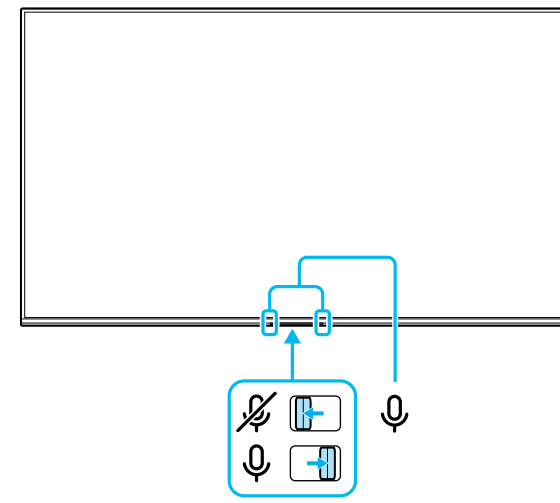
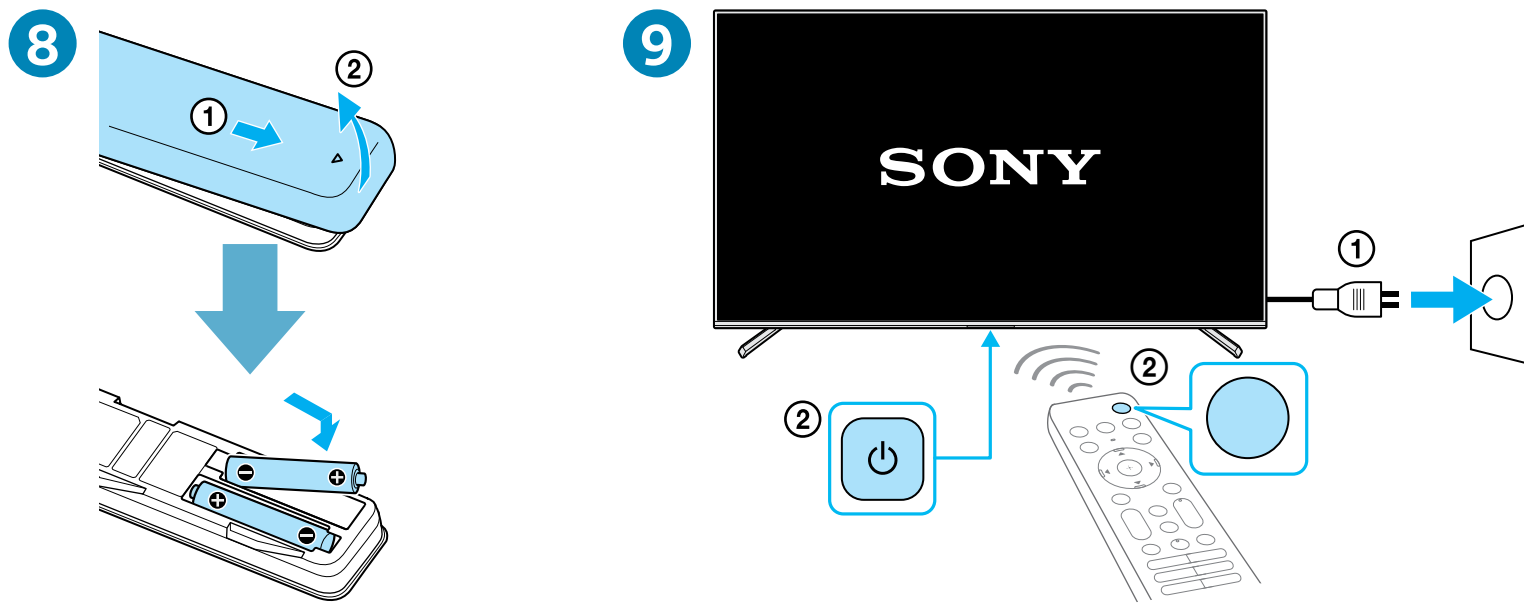
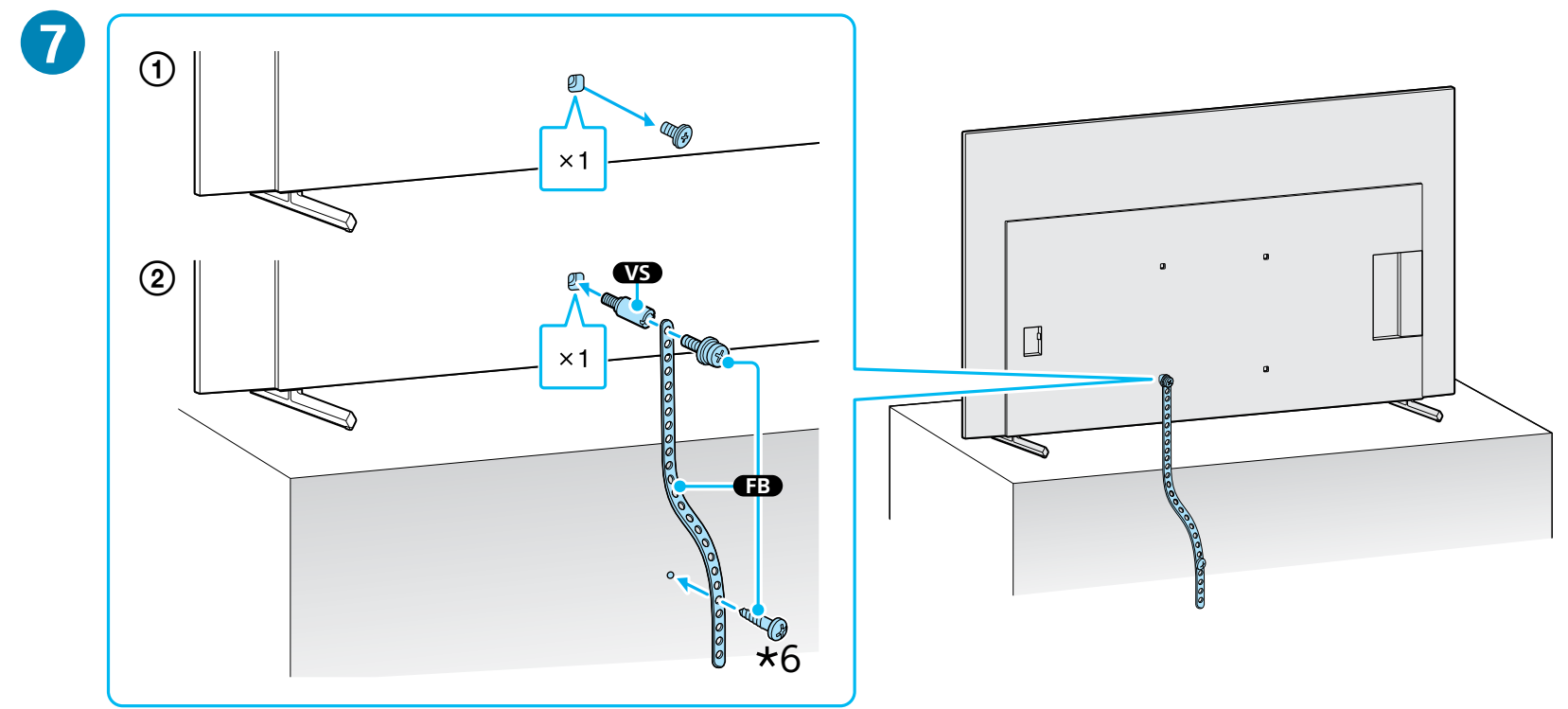
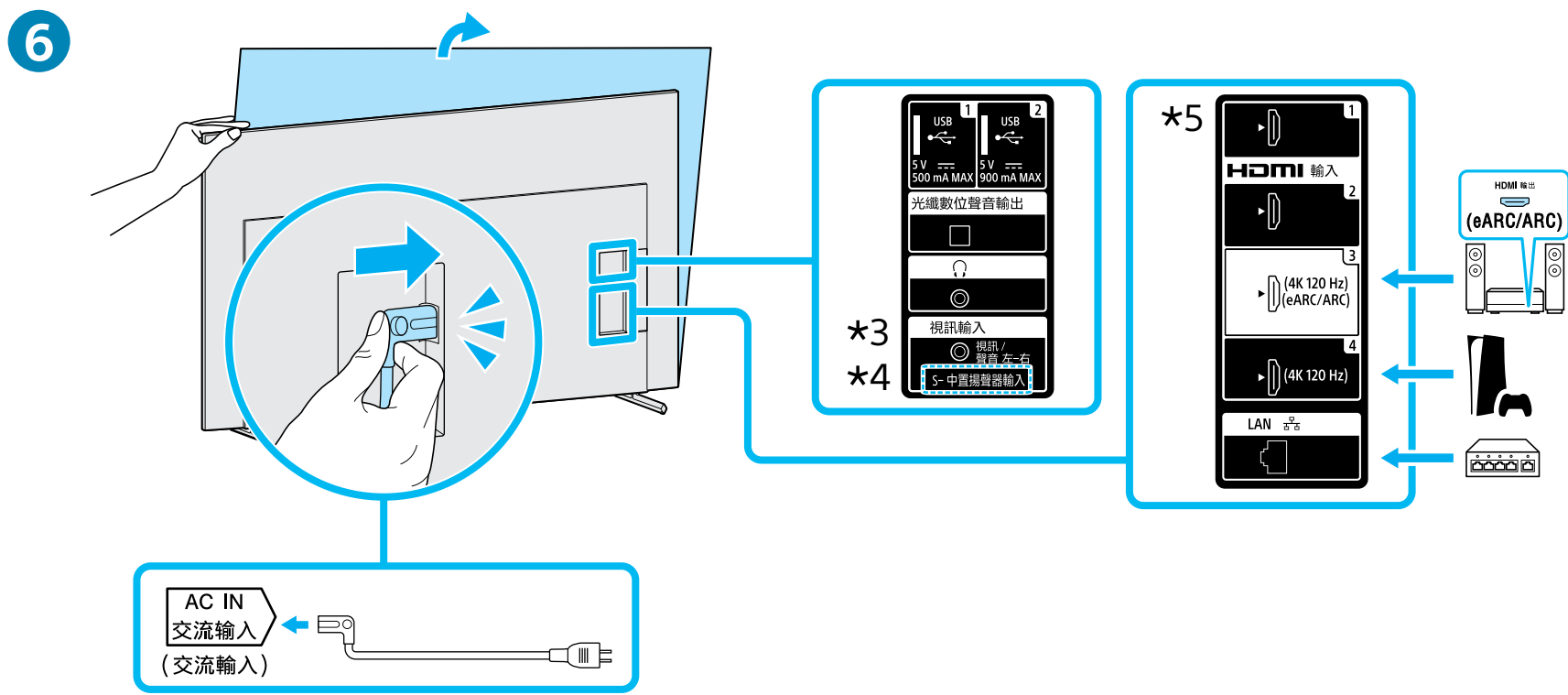
②

SB1

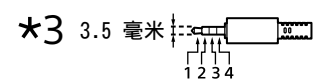
*1 參閱參考指南

*2 僅限特定區域/國家/型號。

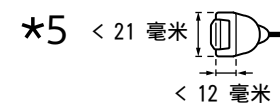
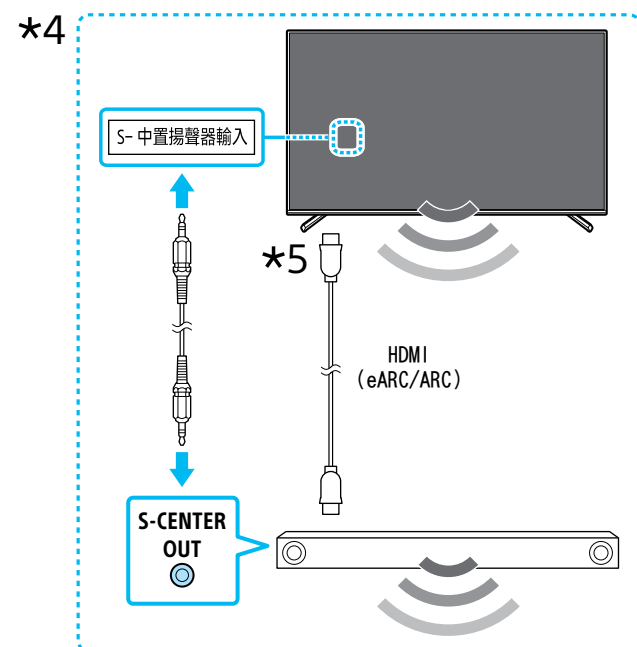




<https://www.sony-asia.com/support>



- 1 : L
- 2 : 視訊
- 3 : 接地
- 4 : R



***6** 木螺絲