

# ***Dismantling Information for Use by Professional Recyclers***

**ORIGINAL MANUAL ISSUE DATE: 2021.05**

Model:

KD-32W800

KD-32W804

**Conditions of Use:**

- (1) Please use this information only for the purpose of performing repair and recycling Sony products. Using this information for any purpose other than the purpose described foregoing is forbidden.
- (2) Do not copy, replicate, reproduce, alter, translate, transmit, sell, lease, or distribute this information in whole or in part without the prior written permission of the author.

**Revision of Information:**

This information may be changed or updated at any time without any prior notice. Please confirm that this information is up-to-date before using it.

9-888-799-41

LCD TV

**SONY®**

Sony Corporation

© 2021.05

# MODEL LIST

---

<u>MODEL</u>	<u>COLOR</u>		<u>COMMANDER</u>	<u>DEST.</u>
<i>KD-32W800</i>	<i>CEI</i>	<i>Black</i>	<i>RMT-TX520E</i>	<i>CEI</i>
<i>KD-32W800</i>	<i>CEP</i>	<i>Black</i>	<i>RMT-TX520E</i>	<i>CEP</i>
<i>KD-32W800</i>	<i>UKA</i>	<i>Black</i>	<i>RMF-TX521E</i>	<i>UKA</i>
<i>KD-32W804</i>	<i>CEI</i>	<i>Black</i>	<i>RMT-TX520E</i>	<i>CEI</i>

<u>MODEL</u>	<u>COLOR</u>	<u>COMMANDER</u>	<u>DEST.</u>
--------------	--------------	------------------	--------------

## TOOLS & EQUIPMENT

### 1 LIST OF ITEMS TO BRING

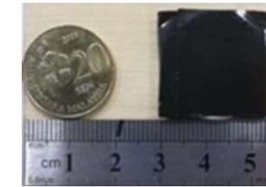
1. Screwdriver (e.g. #2 Phillips Screwdriver)
2. Multimeter
3. ESD Wrist Straps
4. Metal Washer (Flat) or Coin (for remove Rear Cover)
5. Ruler (for remove Rear Cover)
6. Service Manual (Unique) (for remove & replace details)

### 2 OPTIONAL EQUIPMENT

1. Screwdriver (e.g. #0 Phillips Screwdriver)
2. Parts Tray for loose screws and small items
2. Flashlight
3. Service Manual (Common) (for troubleshooting information)

### For Surface Mounted Parts/Connectors:

Hot-Air Type soldering Iron is needed.



Thickness: approx. 1.5mm  
Diameter: 20~25mm  
(wrap in tape (L=50mm))



Plastic or Metal Ruler  
(In case of Metal ruler, wrap in tape  
(L=50mm) for prevent scratches)



## DISASSEMBLY AND PARTS LIST

### 1-1. KD-32W Series 1-1-1. BASE STAND

REF. No.	PART No.	DESCRIPTION	REMARK
1	A5034373A	ASSY, STAND L	for all region
	A5034374A	ASSY, STAND R	for all region



①

SCREW Q3x6	2
A5034376A SCREW M4x16	4

### 1-1-2. REAR COVER

REF. No.	PART No.	DESCRIPTION	REMARK
2	A5034375A	ASSY, COVER REAR	for all region



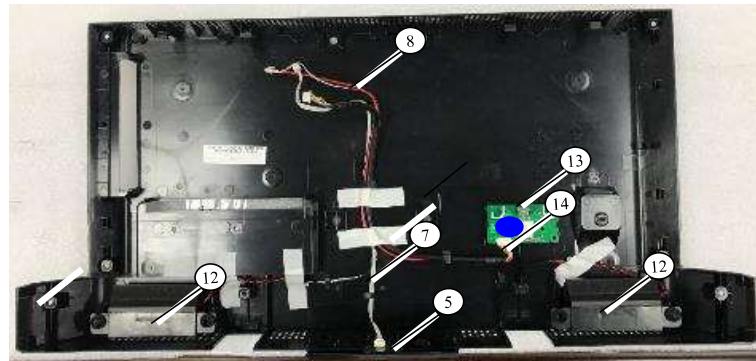
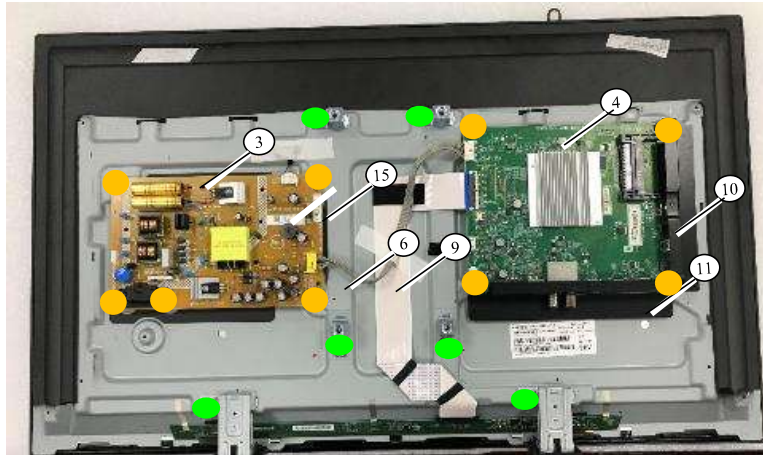
②

SCREW M3x6	9
SCREW M6x14	4

## DISASSEMBLY AND PARTS LIST




### 1-1. KD-32W Series

#### 1-1-3. POWER BOARD, A BOARD ,H BOARD, SPEAKER AND WIFI ANTENNA



REF. No.	PART No.	DESCRIPTION MARK
3	101219011	MOUNTED PWB POWER UNIT
4	101219111	MOUNTED PWB A(MB)
5	101219211	MOUNTED PWB H (IR+KEYPAD)
6	101219411	CONNECTOR ASSY 16P (MB-PSU)
7	101219611	CONNECTOR ASSY (MB-IR-KEY)
8	101219511	CONNECTOR ASSY 4P (MB-SP)
9	101219811	LVDS CABLE(MB-Panel)
	101278011	LVDS CABLE (MB-Panel) Lxx
10	503069201	SIDE IO COVER
11	503069301	BOTTOM IO COVER
12	101218911	LOUDSPEAKER(5W)
13	101219311	WI-FI MODULE (WITH ANTENNA)
14	101219711	CONNECTOR ASSY 6P (MB-WIFI)
15	503069601	INSULATION SHEET

Printed Circuit Board, incl. capacitors

	SCREW M3x8	9
	SCREW M4x8	6
	SCREW M3x6	1

## DISASSEMBLY AND PARTS LIST

### 1-1. KD-32W Series

#### 1-1-4. LCD PANEL and COVER, BOTTOM(Bxx)



#### 1-1-4. 1 LCD PANEL and COVER, BOTTOM(Lxx)



REF. No.	PART No.	DESCRIPTION MARK
1	⚠ A5034275A	LCM ASSY 32 TALOS Bxx NWK
2	⚠ A5034276A	LCM ASSY 32 TALOS Bxx NM3

Liquid Crystal Display

REF. No.	PART No.	DESCRIPTION MARK
1	⚠ A5037556A	LCM ASSY 32 TALOS Lxx

Liquid Crystal Display

## DISASSEMBLY AND PARTS LIST

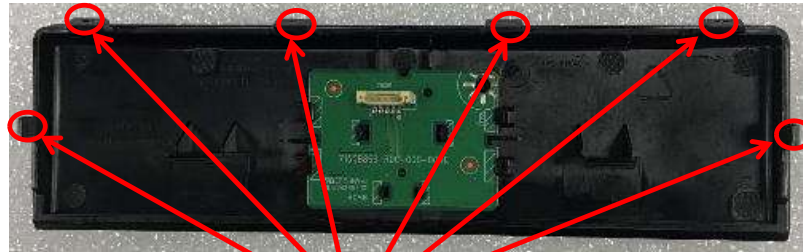
### 1-1. KD-32W Series

#### 1-1-5. MISCELLANEOUS

REF. No.	PART No.	DESCRIPTION MARK	REMARK
1	△ 100995321	REMOTE COMMANDER (RMF-TX520E)	FOR CEP/CEP region
	△ 101139411	REMOTE COMMANDER (RMF-TX521E)	FOR UKA region
2	184642854	CORD SET POWER-SUPPLY	FOR CEI/CEP region
	184642954	CORD SET POWER-SUPPLY	FOR UKA region

AC Power Cable

1. Release the hooks to remove the DECO



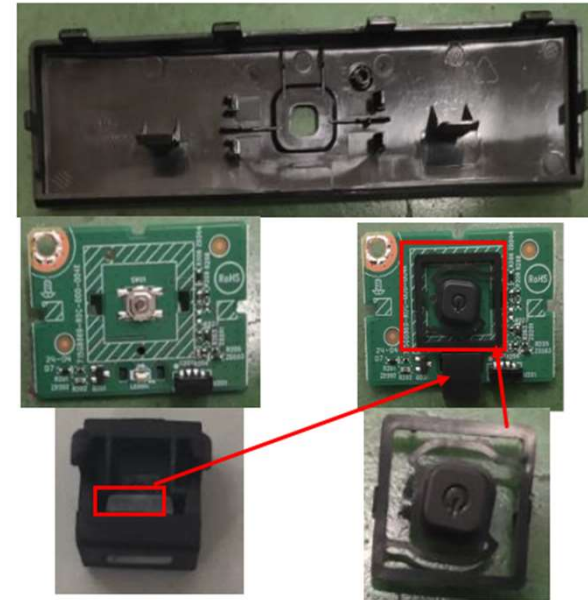
Hook to fix DECO BEZEL

2. Release the hooks to remove the LED and IR\_board.



Hook to fix IR board

Hook to fix LED lens



SONY PN	Description	Qty	Remark
503069401	DECO COVER	1	
101219211	MOUNTED PWB H (IR+KEYPAD)	1	
503068401	LENS	1	
503069501	KEY BUTTON	1	
503068501	LENS HOLDER	1	

Printed Circuit Board, incl. capacitors



