

SONY®

User guide

Wireless Charging Plate
WCH10

Contents

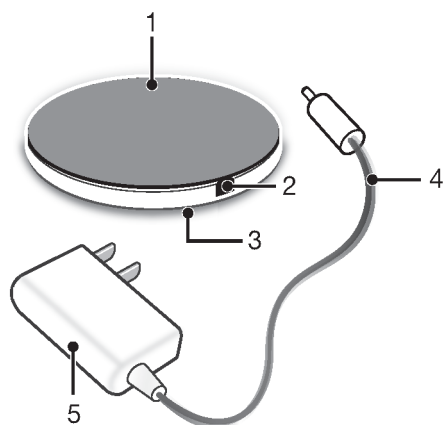
Introduction	3
Charging made easy.....	3
Using the Wireless Charging Plate	4
Charging your device.....	4
Notification light status.....	4
Legal information	6
Declaration of Conformity for WCH10.....	6
AVISO IMPORTANTE PARA MÉXICO.....	7

Introduction

Charging made easy

The WCH10 Wireless Charging Plate lets you charge your device, for example, an Xperia smartphone, without having to worry about connectors and cables. As long as the charging plate is connected to a power supply, all you have to do is place your device on the plate and it starts charging.

The WCH10 Wireless Charging Plate supports the Qi inductive power standard and can therefore charge a range of Qi certified devices (not just Xperia or Sony devices). For the latest information about supported devices, go to www.wirelesspowerconsortium.com/products/.



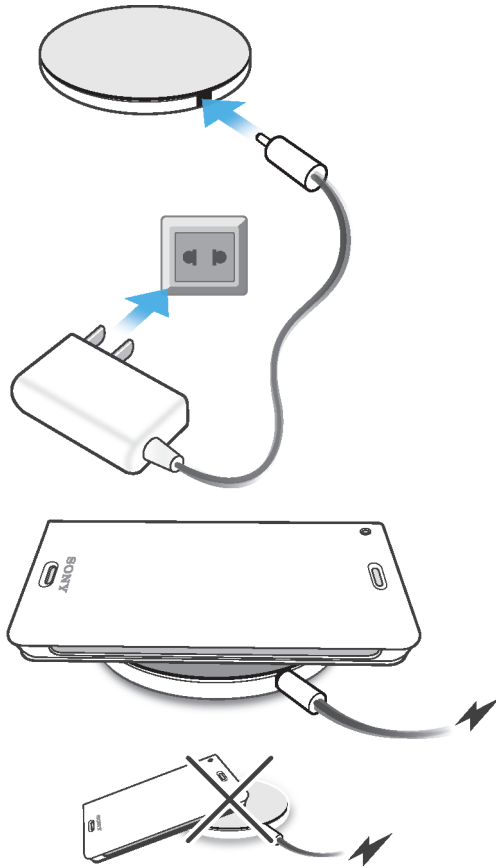
1	Charging plate
2	Charging port
3	Notification light
4	Charger cable
5	Charger

! Only use the charger that came with your Wireless Charging Plate at purchase.

Using the Wireless Charging Plate

Charging your device

To charge your device using the Wireless Charging Plate



- 1 Connect the charger to a power supply and plug the charger cable into the charging port.
 - 2 Place your device on the charging plate. A notification light illuminates for several seconds after the device is properly placed on the plate. Your device then starts to charge.
- ! To use the charging plate, some phones must be attached to a Qi certified case that supports wireless charging. When your device is charging, do not place anything between it and the charging plate, to avoid interference. Be especially cautious that metal objects don't get in the way. Such objects can overheat and, if touched, they may cause burn injuries.
 - 💡 The wireless charging receiver of your device is normally located around the battery area, which may not be at the centre of your device. Be aware of this when placing your device on the charging plate. Use the notification light on the charging plate or the charging icon on your device to verify that your device is in the correct position and charging.

Notification light status

Flashes for 2 seconds	The charging plate is connected to a power supply
Solid bright light for a few seconds	The device is correctly placed on the charging plate
Flashes intermittently	The battery is charging
Solid dim light	The battery is fully charged

Flashes continuously

Charging error

Legal information

Sony WCH10

Prior to use, please read the *Important information* leaflet separately provided.

This User guide is published by Sony Mobile Communications AB or its local affiliated company, without any warranty. Improvements and changes to this User guide necessitated by typographical errors, inaccuracies of current information, or improvements to programs and/or equipment, may be made by Sony Mobile Communications AB at any time and without notice. Such changes will, however, be incorporated into new editions of this User guide.

All rights reserved.

©2014 Sony Mobile Communications AB.

Sony is the trademark or registered trademark of Sony Corporation.

All product and company names mentioned herein are the trademarks or registered trademarks of their respective owners. Any rights not expressly granted herein are reserved. All other trademarks are property of their respective owners.

Visit www.sonymobile.com for more information.

All illustrations are for illustration only and may not accurately depict the actual accessory.

Declaration of Conformity for WCH10

We, **Sony Mobile Communications AB** of

Nya Vattentorget

SE-221 88 Lund, Sweden

declare under our sole responsibility that our product

Sony type AC-0010, AC-0020-EU

and in combination with our accessories, to which this declaration relates is in conformity with the appropriate standards **EN 301 489-7:V1.3.1, EN 301**

489-3:V1.6.1, EN 300 330-2:V1.5.1 EN 62 311:2008 and EN 60

950-1:2006+A11:2009+A1:2010+A12:2011 following the provisions of, Radio Equipment and Telecommunication Terminal Equipment directive **1999/5/EC**, Low voltage directive **2006/95/EC**.

Lund, April 2014

CE 0682



Pär Thuresson,
Quality Officer, SVP, Quality & Customer Services

FCC Statement

This device complies with Part 15 of the FCC rules. Operation is subject to the following two conditions: (1) This device may not cause harmful interference, and (2) This device must accept any interference received, including interference that may cause undesired operation.

Any change or modification not expressly approved by Sony may void the user's authority to operate the equipment.

This equipment has been tested and found to comply with the limits for a Class B digital device, pursuant to Part 15 of the FCC Rules. These limits are designed to provide reasonable protection against harmful interference in a residential installation. This equipment generates, uses and can radiate radio frequency energy and, if not installed and used in accordance with the instructions, may cause harmful interference to radio communications. However, there is no guarantee that interference will not occur in a particular installation.

If this equipment does cause harmful interference to radio or television reception, which can be determined by turning the equipment off and on, the user is encouraged to try to correct the interference by one or more of the following measures:

- Reorient or relocate the receiving antenna.
- Increase the separation between the equipment and receiver.
- Connect the equipment into an outlet on a circuit different from that to which the receiver is connected.
- Consult the dealer or an experienced radio/TV technician for help.

AVISO IMPORTANTE PARA MÉXICO

La operación de este equipo está sujeta a las siguientes dos condiciones: (1) es posible que este equipo o dispositivo no cause interferencia perjudicial y (2) este equipo o dispositivo debe aceptar cualquier interferencia, incluyendo la que pueda causar su operación no deseada.

Para consultar la información relacionada al número del certificado, refiérase a la etiqueta del empaque y/o del producto.

Industry Canada Statement

This device complies with RSS-210 of Industry Canada.

Operation is subject to the following two conditions: (1) this device may not cause interference, and (2) this device must accept any interference, including interference that may cause undesired operation of the device.

This Class B digital apparatus complies with Canadian ICES-003.

Cet appareil numérique de la classe B est conforme à la norme NMB-003 du Canada.

Avis d'industrie Canada

Le présent appareil est conforme aux CNR d'Industrie Canada applicables aux appareils radio exempts de licence.

L'exploitation est autorisée aux deux conditions suivantes: (1) l'appareil ne doit pas produire de brouillage, et, and (2) l'utilisateur de l'appareil doit accepter tout brouillage radioélectrique subi, même si le brouillage est susceptible d'en compromettre le fonctionnement.