

SONY®

使用手冊

Wireless Charging Plate

WCH10

內容

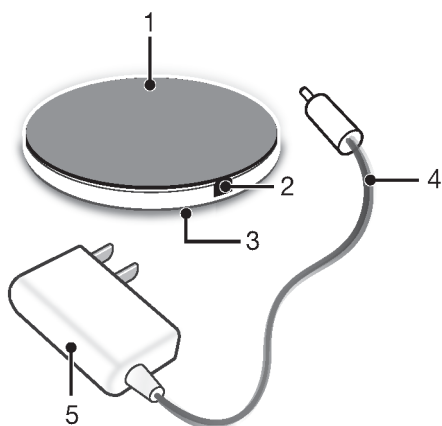
簡介.....	3
充電更加順手.....	3
使用無線充電板.....	4
為您的裝置充電.....	4
通知指示燈狀態.....	4
法律資訊.....	5
Declaration of Conformity for WCH10.....	5
AVISO IMPORTANTE PARA MÉXICO.....	5

簡介

充電更加順手

WCH10 Wireless Charging Plate 無線充電板可以直接為 Xperia 智慧型手機等裝置充電，不用再煩惱接頭和連接線了。只要將充電板接上電源，然後將裝置放在充電板上，裝置就會開始充電。

WCH10 Wireless Charging Plate 支援 Qi 導電標準，可為所有符合 Qi 認證的裝置充電，不侷限於 Xperia 或 Sony 裝置。如需支援裝置的最新相關資訊，請前往 www.wirelesspowerconsortium.com/products/。



1 充電板

2 充電連接埠

3 通知指示燈

4 充電器連接線

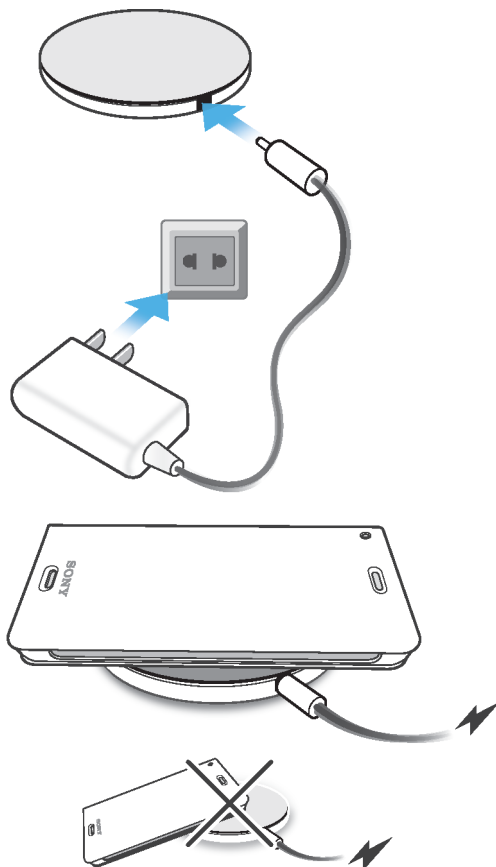
5 充電器

! 僅限使用您購入無線充電板時隨附的充電器。

使用無線充電板

為您的裝置充電

使用無線充電板為裝置充電



- 1 將充電器連接至電源，然後將充電器連接線插入充電連接埠。
 - 2 將裝置放在充電板上。裝置正確放在充電板上後，通知指示燈會亮起幾秒鐘的時間。接著裝置就會開始充電。
- ! 部分手機須附加到支援無線充電的 Qi 認證手機殼才能使用充電板。為裝置充電時，請確保裝置與充電板之間沒有任何物品，以免造成干擾。切勿在裝置與充電板之間放置金屬物品，這類物品可能會出現過熱的情況，在接觸時造成燙傷。
- 💡 裝置的無線充電接收器通常位於電池區域附近，而非裝置的中心位置，因此將裝置放到充電板上時請特別留意。請查看充電板上的通知指示燈或裝置上的充電圖示來確認裝置的位置是否正確以及是否正常充電。

通知指示燈狀態

閃爍 2 秒	充電板已連接至電源供應器
恆亮數秒	裝置已正確放置在充電板上
間歇性閃爍	電池正在充電
恆亮微弱燈號	電池已完全充電
持續閃爍	充電錯誤

法律資訊

Sony WCH10

使用之前，請先閱讀另附的**重要資訊**小手冊。

本使用手冊由 Sony Mobile Communications AB 或其當地聯屬公司印製。本使用手冊不包含任何保固項目。Sony Mobile Communications AB 可能因印刷錯誤、最新資訊有誤或因程式和/或設備改良而隨時對本使用手冊進行修改，恕不另行通知。前述更動將納入本使用手冊之後續版本。

版權所有。

©2014 Sony Mobile Communications AB。

Sony 是 Sony Corporation 的商標或註冊商標。

本文所述之所有產品和公司名稱為其各自所有者的商標或註冊商標。任何未經明示授予的權利均予保留。所有其他商標均屬於其各自所有者的財產。

如需詳細資訊，請造訪 www.sonymobile.com。

所有圖片僅供功能說明參考，請以實際配件為準。

Declaration of Conformity for WCH10

We, **Sony Mobile Communications AB** of

Nya Vattentorget

SE-221 88 Lund, Sweden

declare under our sole responsibility that our product

Sony type AC-0010, AC-0020-EU

and in combination with our accessories, to which this declaration relates is in conformity with the appropriate standards **EN 301 489-7:V1.3.1, EN 301 489-3:V1.6.1, EN 300**

330-2:V1.5.1 EN 62 311:2008 and EN 60 950-1:2006+A11:2009+A1:2010+A12:2011

following the provisions of, Radio Equipment and Telecommunication Terminal Equipment directive **1999/5/EC**, Low voltage directive **2006/95/EC**.

Lund, April 2014

CE 0682



Pär Thuresson,

Quality Officer, SVP, Quality & Customer Services

FCC Statement

This device complies with Part 15 of the FCC rules. Operation is subject to the following two conditions: (1) This device may not cause harmful interference, and (2) This device must accept any interference received, including interference that may cause undesired operation.

Any change or modification not expressly approved by Sony may void the user's authority to operate the equipment.

This equipment has been tested and found to comply with the limits for a Class B digital device, pursuant to Part 15 of the FCC Rules. These limits are designed to provide reasonable protection against harmful interference in a residential installation. This equipment generates, uses and can radiate radio frequency energy and, if not installed and used in accordance with the instructions, may cause harmful interference to radio communications. However, there is no guarantee that interference will not occur in a particular installation.

If this equipment does cause harmful interference to radio or television reception, which can be determined by turning the equipment off and on, the user is encouraged to try to correct the interference by one or more of the following measures:

- Reorient or relocate the receiving antenna.
- Increase the separation between the equipment and receiver.
- Connect the equipment into an outlet on a circuit different from that to which the receiver is connected.
- Consult the dealer or an experienced radio/TV technician for help.

AVISO IMPORTANTE PARA MÉXICO

La operación de este equipo está sujeta a las siguientes dos condiciones: (1) es posible que este equipo o dispositivo no cause interferencia perjudicial y (2) este equipo o

dispositivo debe aceptar cualquier interferencia, incluyendo la que pueda causar su operación no deseada.

Para consultar la información relacionada al número del certificado, refiérase a la etiqueta del empaque y/o del producto.

Industry Canada Statement

This device complies with RSS-210 of Industry Canada.

Operation is subject to the following two conditions: (1) this device may not cause interference, and (2) this device must accept any interference, including interference that may cause undesired operation of the device.

This Class B digital apparatus complies with Canadian ICES-003.

Cet appareil numérique de la classe B est conforme à la norme NMB-003 du Canada.

Avis d'industrie Canada

Le présent appareil est conforme aux CNR d'Industrie Canada applicables aux appareils radio exempts de licence.

L'exploitation est autorisée aux deux conditions suivantes: (1) l'appareil ne doit pas produire de brouillage, et, (2) l'utilisateur de l'appareil doit accepter tout brouillage radioélectrique subi, même si le brouillage est susceptible d'en compromettre le fonctionnement.