

SONY[®]

User guide

Style Cover Touch
SCR56

Contents

Getting started	3
Introduction.....	3
Overview.....	3
Pairing.....	4
Charging.....	5
Learning the basics	7
Using your phone with the Style Cover Touch.....	7
Dimming and waking up the screen.....	9
Disabled smartphone features.....	9
General settings	10
Customizing the Style Cover settings.....	10
Legal information	11

Getting started

Introduction

The Style Cover Touch is a smart cover for your Xperia™ smartphone, that lets you use your phone with a closed cover. The front cover lid is see-through, so you can see and use your phone's entire display, even when the cover is closed. For example, you can launch apps, browse the internet, take a selfie or reply to messages.

Overview

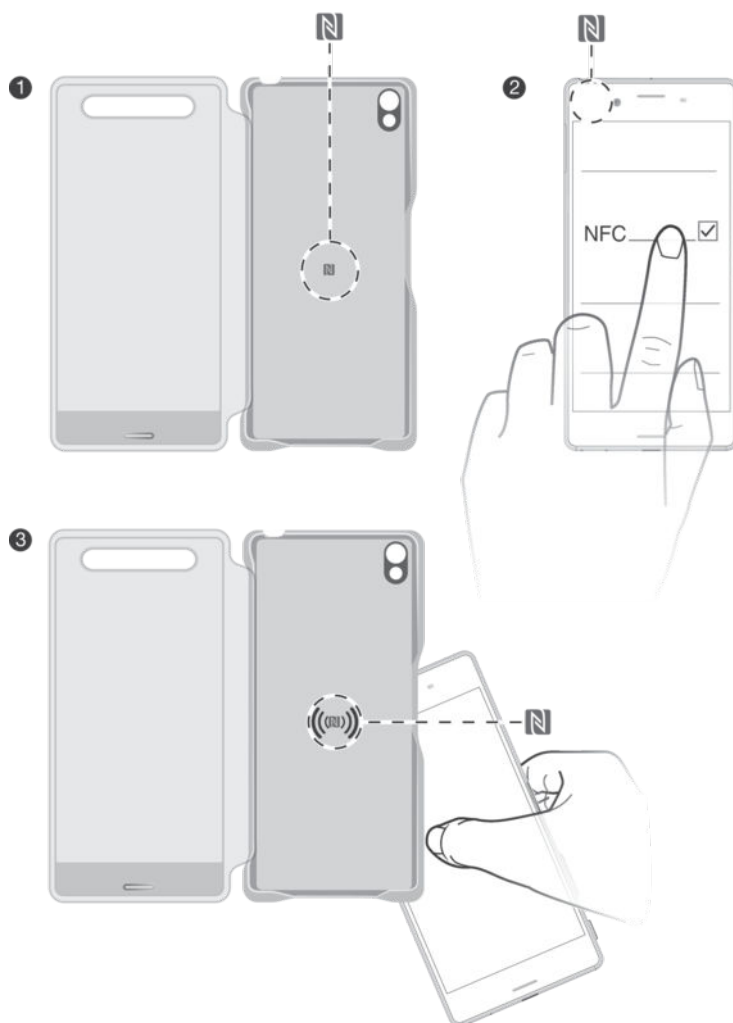


1 NFC™ detection area

2 Front cover lid

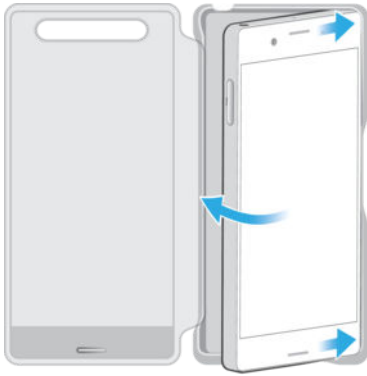
Pairing

Pair the Style Cover Touch with your phone



- 1 Open the front cover lid and find the NFC™ detection area.
 - 2 Make sure that the NFC™ function on the phone is enabled and that the screen is active and unlocked.
 - 3 Touch the NFC™ area of your phone against the NFC™ detection area of the accessory, as indicated in the illustration.
- ! If you touch the NFC™ detection area again, the pairing will be undone. To pair again, simply repeat the steps listed above.

To attach the Style Cover Touch to your phone



💡 Make sure that the back of the phone is clean.

- 1 Position the phone over the corresponding part of the accessory so that the camera lens is aligned with the camera lens hole of the cover.
- 2 First insert the right side of the phone, then the left, and then firmly press down all edges of the phone into the cover so that it is securely attached.

To detach the Style Cover Touch from your phone

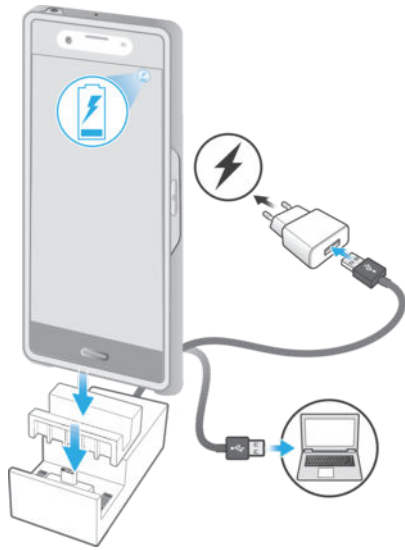


- 1 Position the fingernail of your thumb in the gap between the cover and phone at the left edge of the phone.
- 2 Lift the phone up gently with your other thumb until you can remove the phone from the cover.

Charging

Before you attach the Style Cover Touch to your phone and use it for the first time, make sure that the battery is charged.

To charge your phone while using the Style Cover Touch



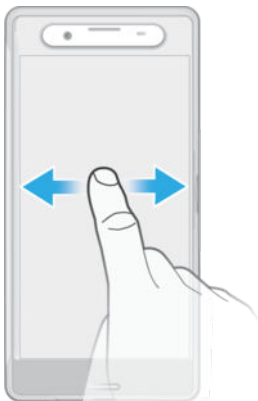
- 1 Plug one end of the charger cable into the charging dock, then plug the other end into the USB port of a computer or a phone charger. If you are using a phone charger, plug the charger into a power outlet.
 - 2 Insert the required attachment into the charging dock.
 - 3 Place your phone in the dock so that the charging dock connector on the phone makes contact with the connector in the dock.
- ! If you aren't sure of the location of the charging dock connector on your phone, refer to the relevant phone User guide.

Learning the basics

Using your phone with the Style Cover Touch

Once the Style Cover Touch is set up and attached to your phone, you can interact with your phone's display through the front cover lid. For example, you can swipe, flick or tap on the screen cover to navigate around.

Swiping



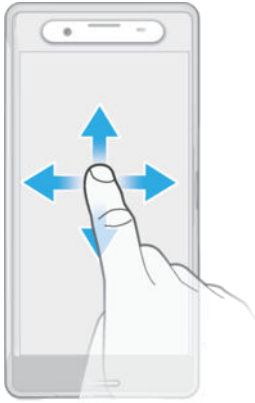
- Swipe to navigate or reveal more options

Tapping



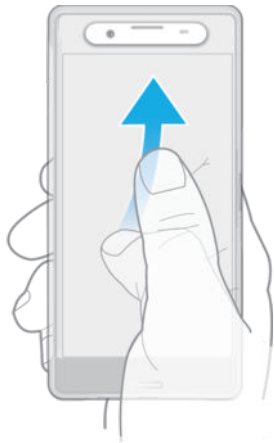
- Tap to open or select an item

Scrolling



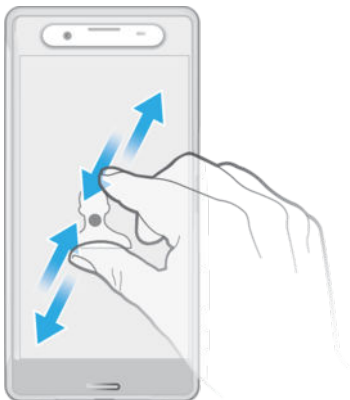
- Drag or flick your finger in the direction you want to scroll

Flicking



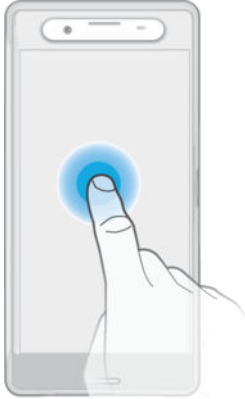
- Flick to navigate

Pinching



- Pinch-in or pinch-out to zoom in or out

Touching and holding



- Touch and hold to move items or reveal more options

Dimming and waking up the screen

When the Style Cover Touch is attached to your phone and left idle for a certain period of time, the screen dims automatically. You can also dim or wake up the screen manually at any time.

To dim or wake up the window screen manually

- Briefly press the power key.

Disabled smartphone features

- ! The Glove mode and Tap to wake up features do not work when the front cover lid is closed. For more information about these features, refer to the User guide for your phone.

General settings


Customizing the Style Cover settings

View and change your Style Cover Touch settings using the Style Cover application. The Style Cover application is accessible from the Application screen.

To open the Style Cover application

- 1 From your Home screen, tap .
- 2 Find and tap **Style Cover**.

To increase screen brightness when the cover is closed

- 1 From your Home screen, tap .
- 2 Find and tap **Style Cover** > Brightness increase when the cover is closed.
- 3 Select an option.

Legal information

Sony SCR56

This User guide is published by Sony Mobile Communications Inc. or its local affiliated company, without any warranty. Improvements and changes to this User guide necessitated by typographical errors, inaccuracies of current information, or improvements to programs and/or equipment, may be made by Sony Mobile Communications Inc. at any time and without notice. Such changes will, however, be incorporated into new editions of this User guide.

All rights reserved.

©2016 Sony Mobile Communications Inc.

Sony is the trademark or registered trademark of Sony Corporation.

All product and company names mentioned herein are the trademarks or registered trademarks of their respective owners. Any rights not expressly granted herein are reserved. All other trademarks are property of their respective owners.

Visit www.sonymobile.com for more information.

All illustrations are for illustration only and may not accurately depict the actual accessory.



Hereby, Sony Mobile declares that the radio equipment type **AI-0151** is in compliance with Directive: 1999/05/EC, 2014/53/EU. The full text of the EU declaration of conformity is available at the following internet address: <http://www.compliance.sony.de/>

С настоящото Sony Mobile декларира, че радиосъоръжение тип **AI-0151** е в съответствие с Директива: 1999/05/EC, 2014/53/EC. Цялостният текст на ЕС декларацията за съответствие може да се намери на следния интернет адрес: <http://www.compliance.sony.de/>

Sony Mobile ovime izjavljuje da je radijska oprema tipa **AI-0151** u skladu s Direktivom: 1999/5/EC, 2014/53/EU. Cjeloviti tekst EU izjave o sukladnosti dostupan je na sljede ojoj internetskoj adresi:

<http://www.compliance.sony.de/>

Sony Mobile timto prohlašuje, že radiové za izeni typ **AI-0151** je v souladu se sm rnicí: 1999/5/EC, 2014/53/EU. Úplné zn ní EU prohlášení o shod ě je k dispozici na této internetové adrese:

<http://www.compliance.sony.de/>

Hermed erklærer Sony Mobile, at radioudstyrstypen **AI-0151** er i overensstemmelse med direktiv: 1999/5/EC, 2014/53/EU. EU-overensstemmelseserklæringens fulde tekst kan findes på følgende internetadresse:

<http://www.compliance.sony.de/>

Hierbij verklaart Sony Mobile dat het type radioapparatuur **AI-0151** conform is met Richtlijn: 1999/5/EC, 2014/53/EU. De volledige tekst van de EU-conformiteitsverklaring kan worden geraadpleegd op het volgende internetadres: <http://www.compliance.sony.de/>

Käesolevaga deklareerib Sony Mobile, et käesolev raadioseadme tüüp **AI-0151** vastab direktiivi: 1999/5/EC, 2014/53/EU. Täielik tekst on kättesaadav järgmisel internetiaadressil:

<http://www.compliance.sony.de/>

Sony Mobile vakuuttaa, että radiolaitetyyppi **AI-0151** on direktiivin: 1999/5/EC, 2014/53/EU mukainen. EU-vaatimustenmukaisuusvakuutuksen täysimittainen teksti on saatavilla seuraavassa internetosoitteessa:

<http://www.compliance.sony.de/>

Le soussigné, Sony Mobile, déclare que l'équipement radioélectrique du type **AI-0151** est conforme à la directive: 1999/5/EC, 2014/53/UE. Le texte complet de la déclaration UE de conformité est disponible à l'adresse internet suivante: <http://www.compliance.sony.de/>

Hiermit erkläre Sony Mobile, dass der Funkanlagentyp **AI-0151** der Richtlinie: 1999/5/EC, 2014/53/EU entspricht. Der vollständige Text der EU-Konformitätserklärung ist unter der folgenden Internetadresse verfügbar: <http://www.compliance.sony.de/>

Με την παρούσα η Sony Mobile, δηλώνει ότι ο ραδιοεξοπλισμός **AI-0151** πληροί τους όρους της οδηγίας: 1999/5/EC, 2014/53/EE. Το πλήρες κείμενο της δήλωσης συμμόρφωσης ΕΕ διατίθεται στην ακόλουθη ιστοσελίδα στο διαδίκτυο: <http://www.compliance.sony.de/>

Sony Mobile igazolja, hogy a **AI-0151** típusú rádióberendezés megfelel a: 1999/5/EC, 2014/53/EU irányelvnek. Az EU-megfelel ségi nyilatkozat teljes szövege elérhet a következők internetes címen:

<http://www.compliance.sony.de/>

Il fabbricante, Sony Mobile, dichiara che il tipo di apparecchiatura radio **AI-0151** è conforme alla direttiva: 1999/5/EC, 2014/53/UE. Il testo completo della dichiarazione di conformità UE è disponibile al seguente indirizzo Internet: <http://www.compliance.sony.de/>

Ar šo Sony Mobile deklar ĩta, ka radioiek rta **AI-0151** atbilst Direkt vai: 1999/5/EC, 2014/53/ES. Pilns ES atbilst bas deklar ĩjas teksts ir pieejams š d ĩnernetā vietn ĩ: <http://www.compliance.sony.de/>

Mes, Sony Mobile, patvirtiname, kad radijo renginĩ tipas **AI-0151** atitinka Direktyv ĩ: 1999/5/EC, 2014/53/ES. Visas ES atitikties deklaracijos tekstas prieinamas šiuo interneto adresu: <http://www.compliance.sony.de/>

Il-Kumpanija Sony Mobile tiddikjara li t-tag mir tar-radju tat tip **AI-0151** huwa konformi mad-Direttiva:

1999/5/EC, 2014/53/EU. It-test s ĩ tad-dikjarazzjoni ta' konformita tal-UE huwa disponibbli f'dan l-indirizz tal-Internet li ĩej: <http://www.compliance.sony.de/>

Herved erklærer Sony Mobile at radioutstyr typen **AI-0151** er i samsvar med direktiv: 1999/5/EC, 2014/53/EU. EU-erklæring fulltekst finner du på Internett under: <http://www.compliance.sony.de/>

Sony Mobile niniejszym o wiadcza, e typ urz dzenia radiowego **AI-0151** jest zgodny z dyrektyw ĩ: 1999/5/EC, 2014/53/UE. Pełny tekst deklaracji zgodno ci UE jest dost pny pod nast puj cym adresem internetowym: <http://www.compliance.sony.de/>

O(a) abaixo assinado(a) Sony Mobile declara que o presente tipo de equipamento de rádio **AI-0151** está em conformidade com a Diretiva: 1999/5/EC, 2014/53/UE. O texto integral da declaração de conformidade está disponível no seguinte endereço de Internet: <http://www.compliance.sony.de/>

Prin prezenta, Sony Mobile declar c ĩ tipul de echipament radio **AI-0151** este in conformitate cu Directiva: 1999/5/EC, 2014/53/UE. Textul integral al declara ĩei UE de conformitate este disponibil la urm toarea adres internet: <http://www.compliance.sony.de/>

Sony Mobile potrjuje, da je tip radijske opreme **AI-0151** skladen z Direktivo: 1999/5/EC, 2014/53/EU. Celotno besedilo izjave EU o skladnosti je na voljo na naslednjem spletnem naslovu: <http://www.compliance.sony.de/>

Sony Mobile týmto vyhlasuje, že radiové zariadenie typu **AI-0151** je v súlade so smernicou: 1999/5/EC,

2014/53/EU. Úplné EU vyhlásenie o zhode je k dispozícii na tejto internetovej adrese:

<http://www.compliance.sony.de/>

Por la presente, Sony Mobile declara que el tipo de equipo radioeléctrico **AI-0151** es conforme con la Directiva: 1999/5/EC, 2014/53/UE. El texto completo de la declaración UE de conformidad está disponible en la dirección Internet siguiente: <http://www.compliance.sony.de/>

Härmed försäkrar Sony Mobile att denna typ av radioutrustning **AI-0151** överensstämmer med direktiv: 1999/5/EC, 2014/53/EU. Den fullständiga texten till EU-försäkran om överensstämmelse finns på följande webbadress: <http://www.compliance.sony.de/>

For EU product compliance: Sony Belgium, bijkantoor van Sony Europe Limited, Da Vincilaan 7-D1, 1935 Zaventem, Belgium

Für EU Produktkonformität: Sony Belgium, bijkantoor van Sony Europe Limited, Da Vincilaan 7-D1, 1935 Zaventem, Belgien

Pour toute question relative à la conformité des produits dans l'UE: Sony Belgium, bijkantoor van Sony Europe Limited, Da Vincilaan 7-D1, 1935 Zaventem, Belgique

Voor EU-product conformiteit: Sony Belgium, bijkantoor van Sony Europe Limited, Da Vincilaan 7-D1, 1935 Zaventem, België

За съответствие на продукти от ЕС: Sony Belgium, bijkantoor van Sony Europe Limited, Da Vincilaan 7-D1, 1935 Zaventem, Белгия

Za skladnost proizvoda u EU: Sony Belgium, bijkantoor van Sony Europe Limited, Da Vincilaan 7-D1, 1935 Zaventem, Belgija

Pro technické požadavky dle směrnice EU: Sony Belgium, bijkantoor van Sony Europe Limited, Da Vincilaan 7-D1, 1935 Zaventem, Belgie

Συμμόρφωση Προϊόντος με νομοθεσία Ε.Ε.: Sony Belgium, bijkantoor van Sony Europe Limited, Da Vincilaan 7-D1, 1935 Zaventem, Βέλγιο

Overensstemmelse med EU lovgivning: Sony Belgium, bijkantoor van Sony Europe Limited, Da Vincilaan 7-D1, 1935 Zaventem, Belgien

EL toote vastavus: Sony Belgium, bijkantoor van Sony Europe Limited, Da Vincilaan 7-D1, 1935 Zaventem, Belgia

EU vaatimusten mukaisuus: Sony Belgium, bijkantoor van Sony Europe Limited, Da Vincilaan 7-D1, 1935 Zaventem, Belgia

Európai uniós termékbiztonság: Sony Belgium, bijkantoor van Sony Europe Limited, Da Vincilaan 7-D1, 1935 Zaventem, Belgium

Per la conformità del prodotto in ambito UE: Sony Belgium, bijkantoor van Sony Europe Limited, Da Vincilaan 7-D1, 1935 Zaventem, Belgio

Par ES produktu atbilstību: Sony Belgium, bijkantoor van Sony Europe Limited, Da Vincilaan 7-D1, 1935 Zaventem, Belgija

D I ES gamini atitiktis: Sony Belgium, bijkantoor van Sony Europe Limited, Da Vincilaan 7-D1, 1935 Zaventem, Belgija

EU produkt samsvar: Sony Belgium, bijkantoor van Sony Europe Limited, Da Vincilaan 7-D1, 1935 Zaventem, Belgia

Informacije o zgodnosti proizvoda s zahtjevima EU: Sony Belgium, bijkantoor van Sony Europe Limited, Da Vincilaan 7-D1, 1935 Zaventem, Belgia

Para a conformidade dos produtos na UE: Sony Belgium, bijkantoor van Sony Europe Limited, Da Vincilaan 7-D1, 1935 Zaventem, Bélgica

Pentru conformitatea UE a aparatului: Sony Belgium, bijkantoor van Sony Europe Limited, Da Vincilaan 7-D1, 1935 Zaventem, Belgia

Zhoda pod a legislativy EU: Sony Belgium, bijkantoor van Sony Europe Limited, Da Vincilaan 7-D1, 1935 Zaventem, Belgicko

Skladnost izdelkov za EU: Sony Belgium, bijkantoor van Sony Europe Limited, Da Vincilaan 7-D1, 1935 Zaventem, Belgija

Para la conformidad del producto en la UE: Sony Belgium, bijkantoor van Sony Europe Limited, Da Vincilaan 7-D1, 1935 Zaventem, Bélgica

För EU:s produktöverensstämmelse: Sony Belgium, bijkantoor van Sony Europe Limited, Da Vincilaan 7-D1, 1935 Zaventem, Belgien

FCC Statement

This device complies with Part 15 of the FCC rules. Operation is subject to the following two conditions: (1) This device may not cause harmful interference, and (2) This device must accept any interference received, including interference that may cause undesired operation.

Any change or modification not expressly approved by Sony may void the user's authority to operate the equipment.

This equipment has been tested and found to comply with the limits for a Class B digital device, pursuant to Part 15 of the FCC Rules. These limits are designed to provide reasonable protection against harmful interference in a residential installation. This equipment generates, uses and can radiate radio frequency energy and, if not installed and used in accordance with the instructions, may cause harmful interference to radio communications. However, there is no guarantee that interference will not occur in a particular installation.

If this equipment does cause harmful interference to radio or television reception, which can be determined by turning the equipment off and on, the user is encouraged to try to correct the interference by one or more of the following measures:

- Reorient or relocate the receiving antenna.
- Increase the separation between the equipment and receiver.
- Connect the equipment into an outlet on a circuit different from that to which the receiver is connected.
- Consult the dealer or an experienced radio/TV technician for help.

Industry Canada Statement

This device complies with RSS-210 of Industry Canada.

Operation is subject to the following two conditions: (1) this device may not cause interference, and (2) this device must accept any interference, including interference that may cause undesired operation of the device.

This Class B digital apparatus complies with Canadian ICES-003.

Cet appareil numérique de la classe B est conforme à la norme NMB-003 du Canada.

Avis d'industrie Canada

Le présent appareil est conforme aux CNR d'Industrie Canada applicables aux appareils radio exempts de licence.

L'exploitation est autorisée aux deux conditions suivantes: (1) l'appareil ne doit pas produire de brouillage, et, and (2) l'utilisateur de l'appareil doit accepter tout brouillage radioélectrique subi, même si le brouillage est susceptible d'en compromettre le fonctionnement.

Cet appareil numérique de la classe B est conforme à la norme NMB-003 du Canada.

Les dispositifs fonctionnant dans la bande 5150-5250 MHz sont réservés uniquement pour une utilisation à l'intérieur afin de réduire les risques de brouillage préjudiciable aux systèmes de satellites mobiles utilisant les mêmes canaux. Le gain maximal d'antenne permis pour les dispositifs utilisant les bandes 5250-5350 MHz et 5470-5725 MHz doit se conformer à la limite de p.i.r.e. Le gain maximal d'antenne permis (pour les dispositifs utilisant la bande 5725-5825 MHz) doit se conformer à la limite de p.i.r.e. spécifiée pour l'exploitation point à point et non point à point, selon le cas. De plus, les utilisateurs devraient aussi être avisés que les utilisateurs de radars de haute puissance sont désignés utilisateurs principaux (c.-à-d., qu'ils ont la priorité) pour les bandes 5 250-5 350 MHz et 5 650-5 850 MHz et que ces radars pourraient causer du brouillage et/ou des dommages aux dispositifs LAN-EL.