

SONY®

# User guide

Wireless Charging Dock  
WCH20

# Contents

<b>Introduction.....</b>	<b>3</b>
Function overview.....	3
Hardware overview.....	3
<b>Using your charging dock.....</b>	<b>4</b>
Getting started.....	4
Charging.....	4
<b>Legal information.....</b>	<b>6</b>
Sony WCH20.....	6
Declaration of Conformity for WCH20.....	7

# Introduction

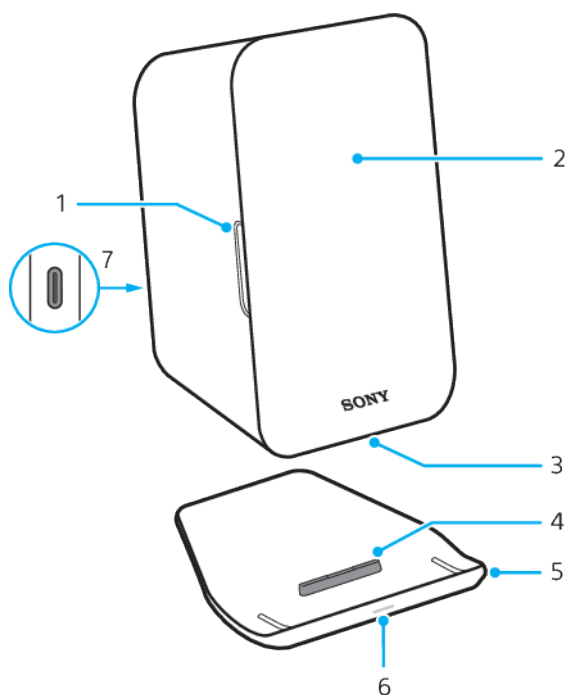
## Function overview

Your Wireless Charging Dock is designed for fast, wireless charging of:

- Xperia XZ2

It can be used in portrait or landscape orientation.

## Hardware overview



1 Stand slot - landscape orientation

2 Wireless charging area

3 Stand slot - portrait orientation

4 Tab

5 Stand

6 Notification light

- White light: Device is charging
- Red flashes: Charging error

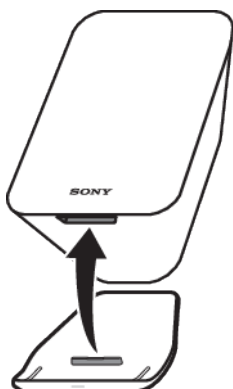
7 Charger/USB Type-C™ cable port

# Using your charging dock

## Getting started

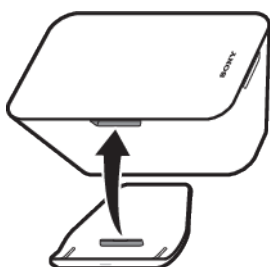
Attach the stand to your charging dock in portrait or landscape orientation.

### To attach the stand in portrait orientation



- Insert the tab into the stand slot, as shown in the illustration.

### To attach the stand in landscape orientation



- Insert the tab into the stand slot, as shown in the illustration.

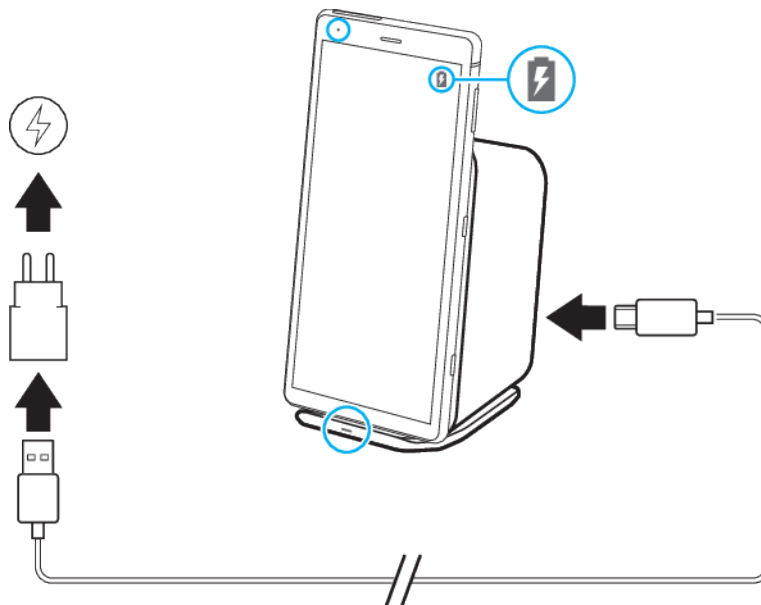
## Charging

You must connect the charging dock to a power source for wireless charging to work. Make sure to remove any phone covers before using the wireless charging.

To prevent overheating or damage:

- Do not put any foreign materials, such as metal objects or magnets, between the phone and charging dock. This can interfere with charging, cause overheating or damage the devices.
  - Do not put any magnetic strip or IC chip cards on the charging dock as they may be demagnetized or broken.
  - Do not cover the charging dock with any material or cloth. This could interfere with the interior fan.
  - Do not let dust collect on the charging dock, keep the surface clean.
- 💡 Due to the magnet in the charging dock, the phone's compass will not work while the phone is on the charging dock.

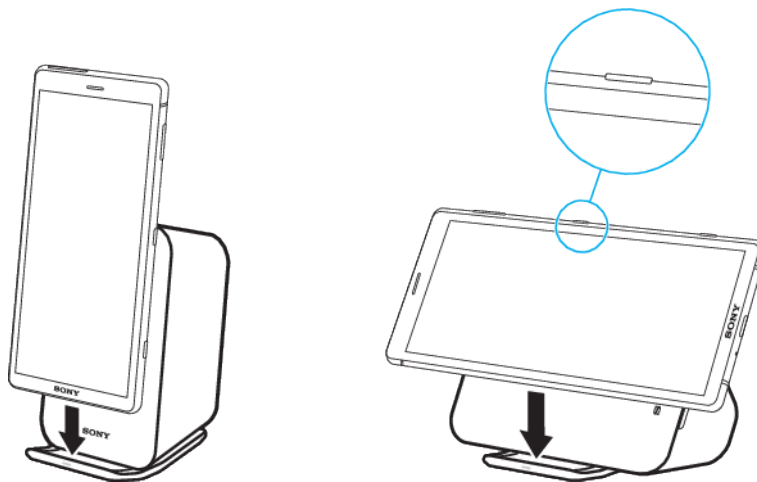
## To charge a phone



- 1 Connect one end of the USB Type-C cable to the charger.
- 2 Connect the other end of the cable to the USB Type-C port on your charging dock.
- 3 Place the phone on the charging dock so the wireless charging areas touch. Make sure to centre the phone on the wireless charging area for optimal charging time.
- 4 When charging begins, the notification lights on the phone and charging dock illuminate. The phone's charging icon appears on-screen.

💡 The compatible charger is the UCH12.

## To position a phone on the charging dock



- Place the phone on the charging dock so that both devices are in the same orientation.
  - If charging in landscape orientation, the phone's power key must be opposite from the charging dock stand, as shown in the illustration. If the phone's power key is touching the stand, it is incorrectly positioned and charging will not work.
- 💡 If charging does not start, try moving the phone slightly to the right or left.

# Legal information

## Sony WCH20

Prior to use, please read the Important information leaflet separately provided.

This User guide is published by Sony Mobile Communications Inc. or its local affiliated company, without any warranty. Improvements and changes to this User guide necessitated by typographical errors, inaccuracies of current information, or improvements to programs and/or equipment, may be made by Sony Mobile Communications Inc. at any time and without notice. Such changes will, however, be incorporated into new editions of this User guide.

All rights reserved.

**©2018 Sony Mobile Communications Inc.**

4-12-3 Higashi-Shinagawa, Shinagawa-ku, Tokyo, 140-0002 Japan

Sony Belgium, bijkantoor van Sony Europe Limited, Da Vincilaan 7-D1, 1935 Zaventem, Belgium

Sony is the trademark or registered trademark of Sony Corporation.

USB Type-C™ and USB-C™ are trademarks of USB Implementers Forum.

All product and company names mentioned herein are the trademarks or registered trademarks of their respective owners. Any rights not expressly granted herein are reserved. All other trademarks are property of their respective owners.

Visit [www.sonymobile.com](http://www.sonymobile.com) for more information.

All illustrations are for illustration only and may not accurately depict the actual accessory.

## Declaration of Conformity for WCH20



Hereby, Sony Mobile declares that the equipment type **AC-0090** is in compliance with Directive: **2014/30/EU, 2014/35/EU**. The full text of the EU declaration of conformity is available at the following internet address: <http://www.compliance.sony.de/>

С настоящото Sony Mobile декларира, че радиосъоръжение тип **AC-0090** е в съответствие с Директива; **2014/30/ЕС, 2014/35/ЕС**. Цялостният текст на ЕС декларацията за съответствие може да се намери на следния интернет адрес: <http://www.compliance.sony.de/>

Sony Mobile ovime izjavljuje da je radijska oprema tipa **AC-0090** u skladu s Direktivom; **2014/30/EU, 2014/35/EU**. Cjeloviti tekst EU izjave o sukladnosti dostupan je na sljedećoj internetskoj adresi: <http://www.compliance.sony.de/>

Sony Mobile tímto prohlašuje, že radiové zařizení typ **AC-0090** je v souladu se směrnicí; **2014/30/EU, 2014/35/EU**. Úplné znění EU prohlášení o shodě je k dispozici na této internetové adrese: <http://www.compliance.sony.de/>

Hermed erklarer Sony Mobile, at radioudstyrstypen **AC-0090** er i overensstemmelse med direktiv; **2014/30/EU, 2014/35/EU**. EU-overensstemmelseserklaringens fulde tekst kan findes på følgende internetadresse: <http://www.compliance.sony.de/>

Hierbij verklaart Sony Mobile dat het type radioapparatuur **AC-0090** conform is met Richtlijn; **2014/30/EU, 2014/35/EU**. De volledige tekst van de EU-conformiteitsverklaring kan worden geraadpleegd op het volgende internetadres: <http://www.compliance.sony.de/>

Käesolevaga deklareerib Sony Mobile, et käesolev raadioseadme tüüp **AC-0090** vastab direktiivi; **2014/30/EL, 2014/35/EL** nõuetele. ELi vastavusdeklaratsiooni täielik tekst on kättesaadav järgmisel internetiaadressil: <http://www.compliance.sony.de/>

Sony Mobile vakuuttaa, että radiolaitetyyppi **AC-0090** on direktiivin; **2014/30/EU, 2014/35/EU** mukainen. EU-vaatimustenmukaisuusvakuutuksen täysimittainen teksti on saatavilla seuraavassa internetosoitteessa: <http://www.compliance.sony.de/>

Le soussigné, Sony Mobile, déclare que l'équipement radioélectrique du type **AC-0090** est conforme à la directive; **2014/30/UE, 2014/35/UE**. Le texte complet de la déclaration UE de conformité est disponible à l'adresse internet suivante: <http://www.compliance.sony.de/>

Hiermit erklärt Sony Mobile, dass der Funkanlagentyp **AC-0090** der Richtlinie; **2014/30/EU, 2014/35/EU** entspricht. Der vollständige Text der EU-Konformitätserklärung ist unter der folgenden Internetadresse verfügbar: <http://www.compliance.sony.de/>

Με την παρούσα η Sony Mobile, δηλώνει ότι ο ραδιοεξοπλισμός **AC-0090** πληροί τους όρους της οδηγίας; **2014/30/ΕΕ, 2014/35/ΕΕ**. Το πλήρες κείμενο της δήλωσης συμμόρφωσης ΕΕ διατίθεται στην ακόλουθη ιστοσελίδα στο διαδίκτυο: <http://www.compliance.sony.de/>

Sony Mobile igazolja, hogy a **AC-0090** típusú rádióberendezés megfelel a; **2014/30/EU, 2014/35/EU** irányelvnek. Az EU-megfelelőségi nyilatkozat teljes szövege elérhető a következő internetes címen: <http://www.compliance.sony.de/>

Il fabbricante, Sony Mobile, dichiara che il tipo di apparecchiatura radio **AC-0090** è conforme alla direttiva; **2014/30/EU, 2014/35/EU**. Il testo completo della dichiarazione di conformità UE è disponibile al seguente indirizzo Internet: <http://www.compliance.sony.de/>

Ar šo Sony Mobile deklarē, ka radioiekārta **AC-0090** atbilst Direktīvai; **2014/30/ES, 2014/35/ES**. Pilns ES atbilstības deklarācijas teksts ir pieejams šādā interneta vietnē: <http://www.compliance.sony.de/>

Mes, Sony Mobile, patvirtiname, kad radijo įrenginių tipas **AC-0090** atitinka Direktyvą; **2014/30/ES, 2014/35/ES**. Visas ES atitikties deklaracijos tekstas prieinamas šiuo interneto adresu: <http://www.compliance.sony.de/>

Il-Kumpanija Sony Mobile tiddikjara li t-tagħmir tar-radju tat tip **AC-0090** huwa konformi mad-Direttiva; **2014/30/EU, 2014/35/EU**. It-test sħiħ tad-dikjarazzjoni ta' konformita tal-UE huwa disponibbli f'dan l-indirizz tal-Internet li ġej: <http://www.compliance.sony.de/>

Herved erklarer Sony Mobile at radioutstyr typen **AC-0090** er i samsvar med direktiv; **2014/30/EU, 2014/35/EU**. EU-erklaring fulltekst finner du på Internett under: <http://www.compliance.sony.de/>

Sony Mobile niniejszym oświadcza, że typ urządzenia radiowego **AC-0090** jest zgodny z dyrektywą; **2014/30/UE, 2014/35/UE**. Pełny tekst deklaracji zgodności UE jest dostępny pod następującym adresem internetowym: <http://www.compliance.sony.de/>

O(a) abaixo assinado(a) Sony Mobile declara que o presente tipo de equipamento de rádio **AC-0090** está em conformidade com a Diretiva; **2014/30/UE, 2014/35/UE**. O texto integral da declaração de conformidade está disponível no seguinte endereço de Internet: <http://www.compliance.sony.de/>

Prin prezenta, Sony Mobile declară că tipul de echipament radio **AC-0090** este în conformitate cu Directiva; **2014/30/UE, 2014/35/UE**. Textul integral al declarației UE de conformitate este disponibil la următoarea adresă internet: <http://www.compliance.sony.de/>

Sony Mobile potrjuje, da je tip radijske opreme **AC-0090** skladen z Direktivo; **2014/30/EU, 2014/35/EU**. Celotno besedilo izjave EU o skladnosti je na voljo na naslednjem spletnem naslovu: <http://www.compliance.sony.de/>

Sony Mobile týmto vyhlasuje, že rádiové zariadenie typu **AC-0090** je v súlade so smernicou; **2014/30/EÚ, 2014/35/EÚ**. Úplné EÚ vyhlásenie o zhode je k dispozícii na tejto internetovej adrese: <http://www.compliance.sony.de/>

Por la presente, Sony Mobile declara que el tipo de equipo radioeléctrico **AC-0090** es conforme con la Directiva; **2014/30/UE, 2014/35/UE**. El texto completo de la declaración UE de conformidad está disponible en la dirección Internet siguiente: <http://www.compliance.sony.de/>

Härmed försäkrar Sony Mobile att denna typ av radioutrustning **AC-0090** överensstämmer med direktiv; **2014/30/EU, 2014/35/EU**. Den fullständiga texten till EU-försäkran om överensstämmelse finns på följande webbadress: <http://www.compliance.sony.de/>

Bu belgeyle, Sony Mobile Communications Inc., **AC-0090** tipi telsiz cihazının **2014/30/EU, 2014/35/EU** sayılı Direktife uygun olduğunu beyan etmektedir. AB Uygunluk beyanının tüm metnine şu internet adresinden ulaşılabilir: <http://www.compliance.sony.de/>