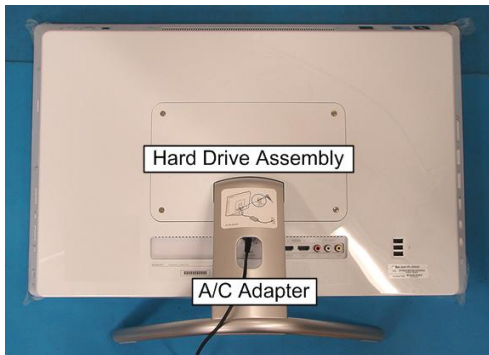


IMPORTANT! **PLEASE READ BEFORE YOU START**

These easy instructions will guide you through the Hard Drive replacement process.

- ✓ Before you begin, place your notebook computer on a clean or covered surface to avoid damage to the computer's case.*
- ✓ Follow the ESD (Electrostatic Discharge) damage prevention instructions:
 - Hold parts by the edges, away from exposed circuitry when possible.
 - Do not walk around excessively as this promotes static build-up.
- ✓ Before you begin, remove any jewelry you may be wearing to prevent scratches to the surface of your notebook computer.*
- ✓ The appearance of the electronic components shown in the illustrations may differ from the components shipped. This slight difference does not affect the accuracy of these instructions.

* Sony is not responsible for damage caused by incorrect handling of the notebook computer.



Prepare the Computer

CAUTION: Make sure the computer is turned off and the AC Adapter is disconnected. Failure to do so can result in damage to the computer.

Step 1. Place the computer, with the LCD Panel facing down, on a protected surface with the Stand facing you.



Disconnect the AC Adapter

Step 2. The A/C Adapter connects to the unit under the Stand. Reach behind the Stand to disconnect the A/C Adapter from the unit and remove.

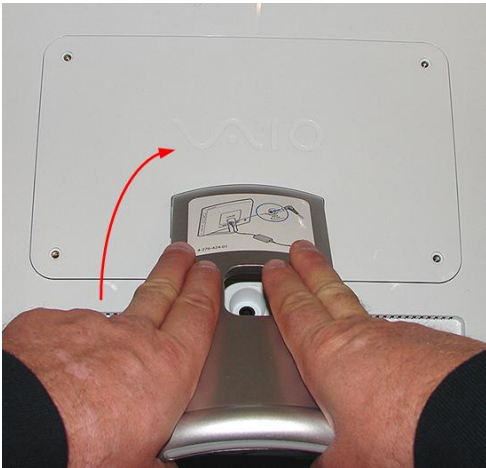


Hard Drive Door

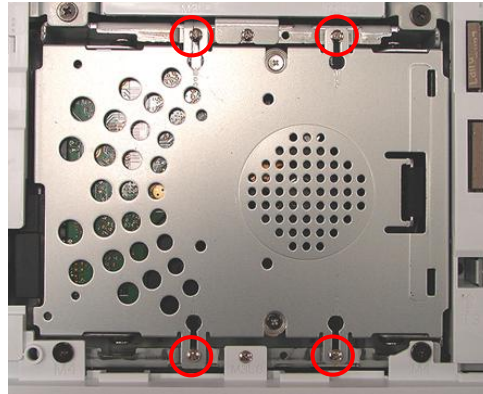
Hard Drive Removal (Steps 3-7)

Step 3. Using the enclosed magnetic screwdriver, remove the four (4) screws securing the Hard Drive Door.

Put aside the screws to re-secure the Hard Drive Door later in the procedure.

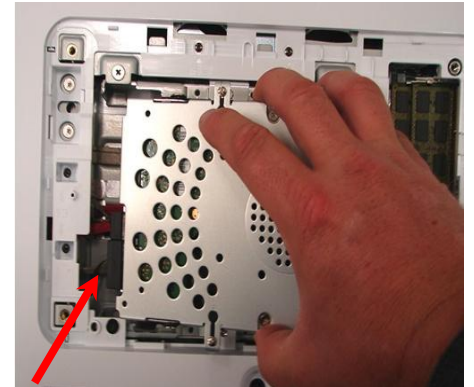


Step 4. Grasp the Door stand and rotate up to disengage the Tabs holding the Door in place. When the Tabs release, lift the Door straight up to remove.



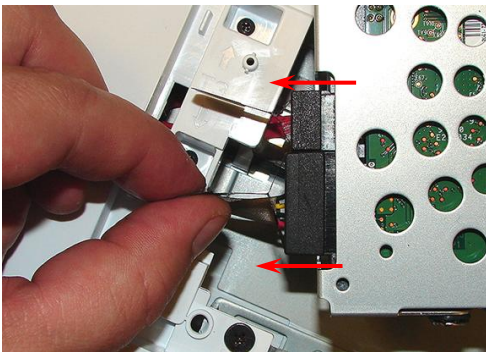
Step 5. Using the enclosed magnetic screwdriver, loosen the four (4) screws securing the Hard Drive Assembly.

The screws will loosen but not cannot be completely removed from the Hard Drive.

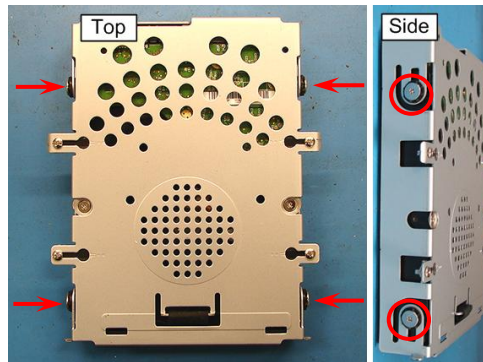


Hard Drive Cables

Step 6. Grasping the Hard Drive from the right side, lift up to expose the Hard Drive Cables as shown.



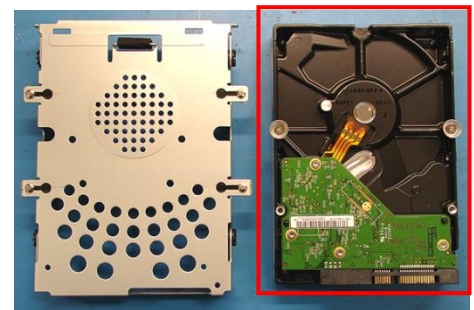
Step 7. For each Hard Drive Cable, grasp the Tab on the connector and slide the Cable away from the Hard Drive to disconnect. Remove the Hard Drive from the unit.



Hard Drive Disassembly
(Steps 8-12)

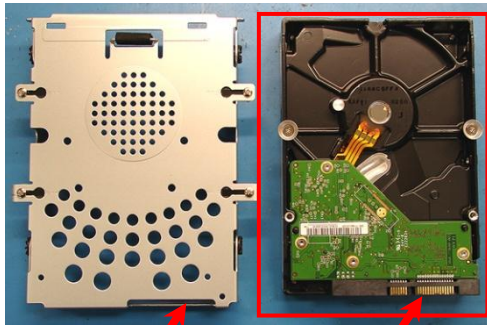
Step 8. Remove the four (4) screws which secure the Bracket to the Hard Drive. Lift the Hard Drive Bracket straight up to remove.

Put the screws aside to secure the Bracket to the New Hard Drive later in the procedure.



Old Hard Drive

Step 9. Set the old Hard Drive aside.



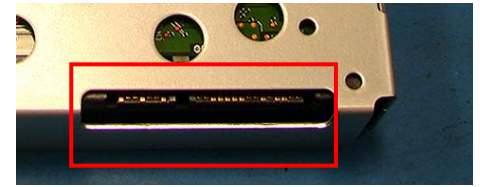
HDD Bracket Hole

HDD Connector
New Hard Drive

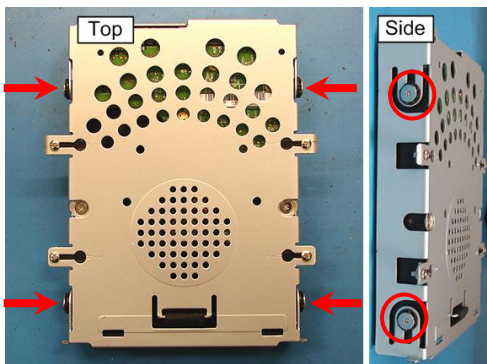
Step 10. Prepare the new Hard Drive for assembly. Align the HDD Bracket Hole and HDD Connector as shown.



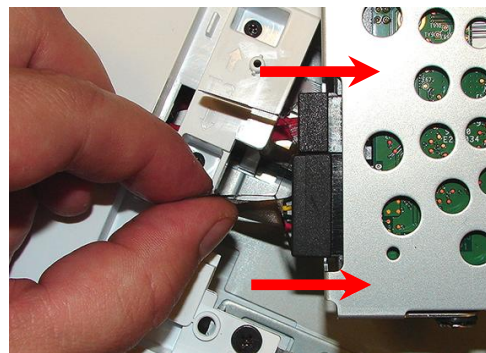
Step 11. Place the Hard Drive Bracket over the new Hard Drive.



NOTE! Proper mounting of the Hard Drive bracket can be verified with the Hard Drive Connectors appearing through the Hard Drive Bracket.



Step 12. Re-install the four (4) Hard Drive Bracket screws to secure the Bracket to the New Hard Drive.

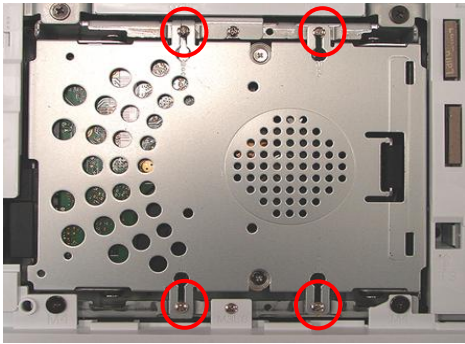


Hard Drive Reinstallation (Steps 13-18)

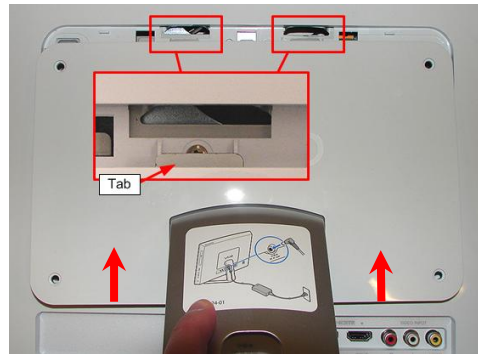
Step 13. Reconnect the Hard Drive Cables to the Hard Drive.



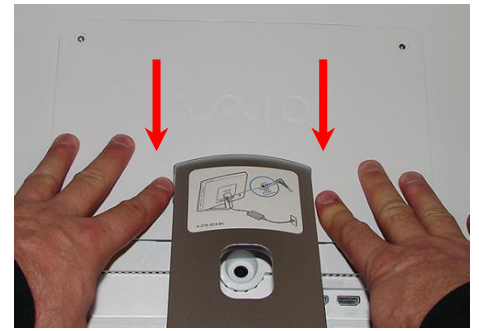
Step 14. Reseat the Hard Drive into the Hard Drive Bay.



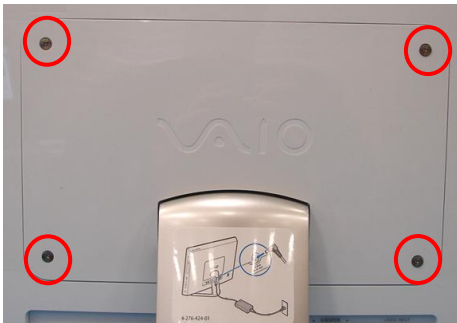
Step 15. Re-tighten the four (4) Hard Drive screws holding the Hard Drive assembly in place.



Step 16. Align the Tabs on the Top of the Hard Drive Door with the Notches at the top of the Hard Drive Bay. Slide the Hard Drive Door up to secure the Tabs.



Step 17. Press the Door down to seat the remaining Door Tabs. Verify that the Door sits flush with the unit.



Step 18. Re-install the four (4) Hard Drive Door Screws to secure the Door.

Step 19. Reconnect the AC Adaptor.

Power on your computer and continue with the recovery process by following the instructions described on the back of the recovery disk's case.

Return the old Hard Drive to Sony using the included shipping instructions.