

Quick Start Guide

Initial Setup

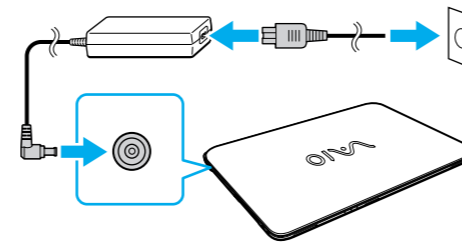
1 Check supplied items

- AC adapter
- Power cord
- Battery pack*
- Windows® 8 Pro 64-bit Recovery Media

* The battery pack is installed on your computer at the time of delivery.

! Features and specifications may vary and are subject to change without notice.

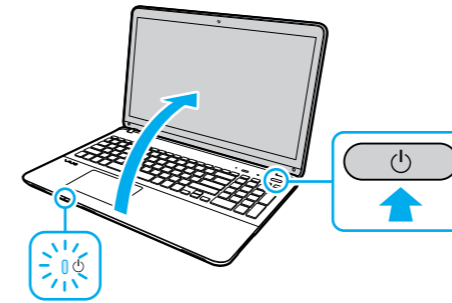
2 Connect AC adapter



With the battery pack installed on your computer, plug the power cord and the AC adapter into an AC outlet and the computer.

! Be sure to connect the AC adapter to your computer when using it for the first few times to ensure the battery becomes fully charged.

3 Turn on your VAIO® computer



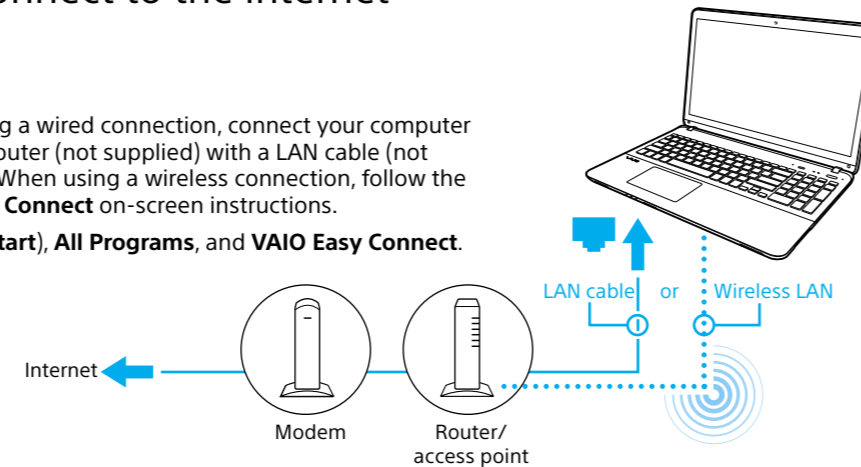
Press and hold down the power button until the power indicator light turns on.

! The startup process will take a few minutes. No action is required until the setup window appears.

4 Connect to the Internet

When using a wired connection, connect your computer and your router (not supplied) with a LAN cable (not supplied). When using a wireless connection, follow the **VAIO Easy Connect** on-screen instructions.

Click **(Start)**, **All Programs**, and **VAIO Easy Connect**.



! For detailed information on network settings and devices, refer to the manual provided by the Internet Service Provider (ISP) or manufacturer of the devices. The above diagram is one of the Internet connection methods as an example.

5 Complete important tasks

- Update your computer**
Perform **Windows Update** and **VAIO Update**.
Click **(Start)**, **All Programs**, and **Windows Update** or **VAIO Update**.
- Create your Recovery Media**
Press the **ASSIST** button to start **VAIO Care**, then click **Advanced Tools**. Recovery Media are not supplied with your computer. Refer to the supplied **Recovery, Backup and Troubleshooting Guide** before creating the Recovery Media.
- Register your computer**
Press the **ASSIST** button to start **VAIO Care**, then click **About your VAIO**.

6 Locate User Guide

An introduction of the **User Guide** is available on your computer. Update to the complete guide, by following the steps in the introduction.

- 1 Check if your computer is connected to the Internet.
- 2 Click **(Start)**, **All Programs**, and **VAIO Manual**.

The **User Guide** may already be updated to the complete version if you run **VAIO Update** in advance.

Parts and Controls

A Built-in camera / indicator
LCD screen

B Security slot
DC IN port
Air exhaust vent
LAN port
HDMI output port
USB port x 2 (Compliant with the USB 3.0 standard, the port with the ⚡ mark supports USB charging.)
Microphone jack
Headphone jack

C (Bottom)
Subwoofer*

F USB port x 2 (Compliant with the USB 2.0 standard.)
Optical disc drive

E Built-in speakers
Power indicator
Charge indicator
Disc drive indicator
SD memory card slot
Touch pad
Press the bottom left of the touch pad to click.

D **ASSIST** button Starts **VAIO Care** while your computer is on - easily tune-up and self support the computer.
Power button
Built-in microphone

* On selected models only.

Care and Handling Tips

Computer Handling

Do not exert pressure on your computer, especially the LCD/touch screen or the AC adapter cable.

HDD Care

If your computer is equipped with a built-in hard disk drive, avoid moving the computer when it is turned on, is in the process of powering on, or is shutting down.

Ventilation

Place your computer on hard surfaces such as a desk or table. Proper air circulation around vents is important to prevent overheating.

Liquid Damage

Protect your computer from contact with liquids.

