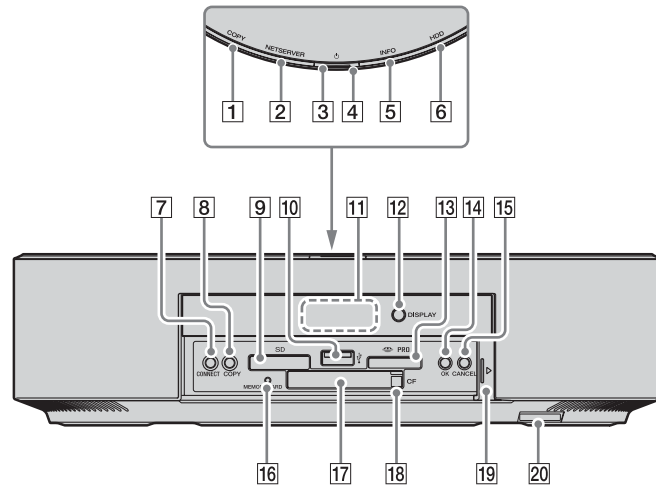


Ports

Front

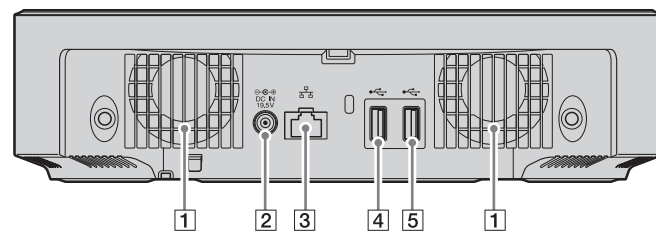


- 1 COPY indicator light**
Indicates the state of a USB device or a memory card and the status of data imported from the device or card.
- 2 NETSERVER indicator light**
Indicates the server test status or the state of the Home Server.
- 3 (POWER) indicator light**
Indicates the state of the power supply or the state of the Home Server.
- 4 (POWER) button**
Press this button to turn on and off the Home Server.
- 5 INFO indicator light**
Indicates the state of the Home Server.
- 6 HDD indicator light**
Indicates the remaining capacity or the state of the hard disk drive.

- 7 CONNECT button**
Press this button to obtain a permission code for adding a Data Sync (receiving) profile.
- 8 COPY button**
Press this button to import data from a USB device or a memory card.
- 9 SD (SD memory card) slot**
Insert an SD memory card.
- 10 (USB) port**
Connect a USB mass storage class device, such as a digital still camera or a digital camcorder. This port is also labeled as Front USB on the Home Server Settings Page.
- 11 Display**
Displays information on the Home Server.

- 12 DISPLAY button**
Press this button to turn on the display on the Home Server and select the required information.
- 13 Memory Stick slot**
Insert a "Memory Stick" media. This slot can also accommodate the Duo-type media without an adapter.
- 14 OK button**
Press this button to confirm the information displayed on the display.
- 15 CANCEL button**
Press this button to cancel the on-going operation. You can also press and hold this button for 10 seconds to clear the administrator registration and the IP address settings.
- 16 MEMORY CARD access indicator light**
Blinks while access to the memory card is in progress.
- 17 CF (CompactFlash) slot**
- 18 CF (CompactFlash) media eject button**
- 19 Front door**
To open the front door, put your fingertip on the left end of the door and slide it half way to the right. To close the door, slide it half way to the left.
- 20 ID label**
Shows the model name of the Home Server.

Back



- 1 Air vents**
- 2 DC IN port**
Connect to the AC adapter.
- 3 Network (LAN) port**
Connect a network (LAN) cable.

- 4 (USB) port 1**
Connect a USB mass storage class device, such as a digital still camera or a digital camcorder. This port is also labeled as Rear USB1 on the Home Server Settings Page.

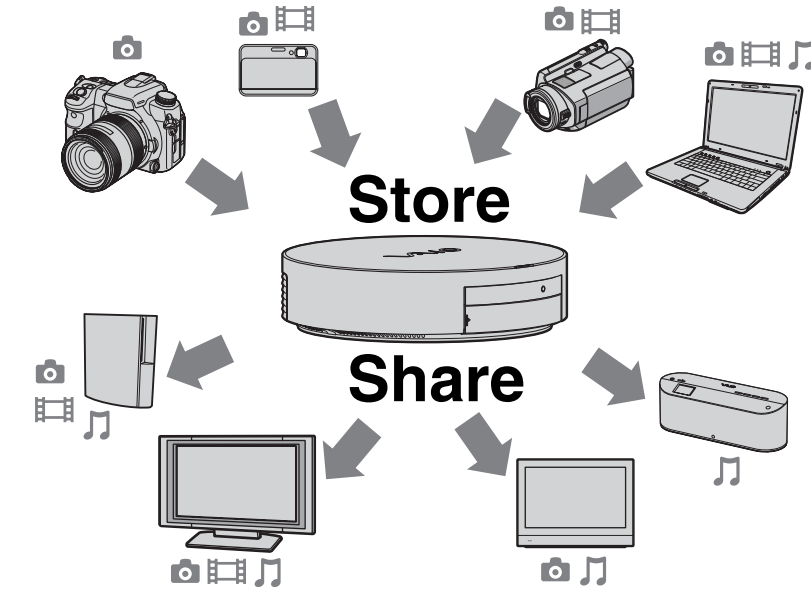
- 5 (USB) port 2**
Connect a USB mass storage class device, such as a digital still camera or a digital camcorder. This port is also labeled as Rear USB2 on the Home Server Settings Page.

Note

Be sure not to connect any unsupported networks or any telephone lines to the Network port.

Getting to know your VGF-HS1 Home Server

The information provided here is designed to help you become familiar with your Home Server.



Note

Some of the above products may not be available, depending on the country or region of residency.

Unpacking

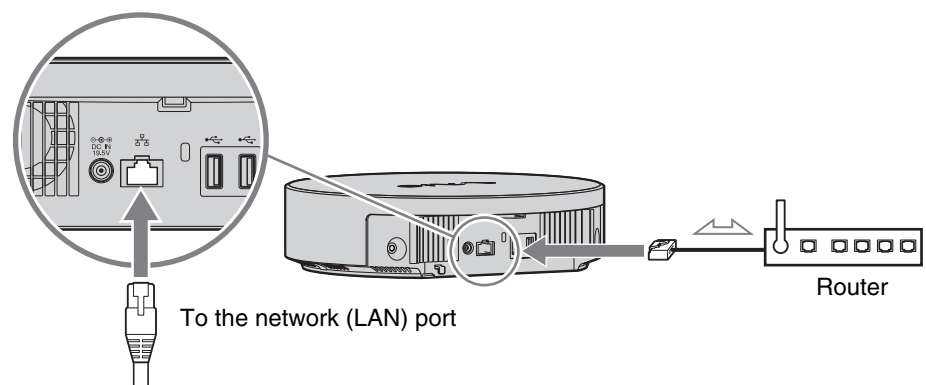
- Home Server
- Network (LAN) cable (straight-through Ethernet cable, 2 m)
- CD-ROM disc
 - Software
 - PC Link
 - VAIO Media
 - Contents
 - Sample contents (also stored on your Home Server at the time of delivery)
- User Guide
- Setup Guide
- Quick Start Guide (this document)
- Warranty sheet or Guarantee and Service Support booklet (depending on the country or region of residency)
- AC adapter
- Power cord

Continued

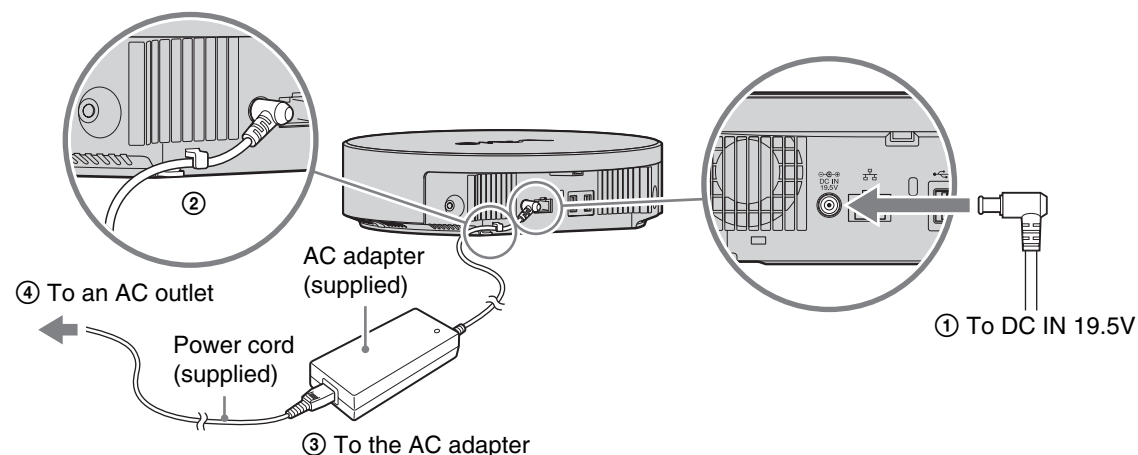


Connecting

- 1 Connect the supplied network (LAN) cable to the network (LAN) port on the back of your Home Server.

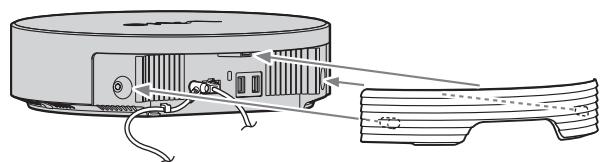


- 2 Connect your Home Server to a power outlet with the supplied AC adapter.





Tip Please refer to the Setup Guide for detailed instructions on connecting to a network.

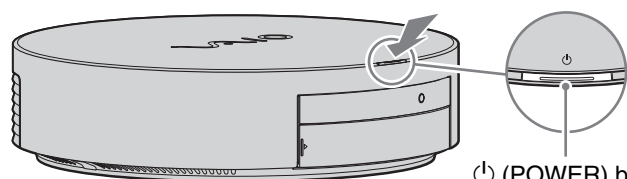
- 3 Attach the rear cover.

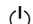



Turning On/Off



Turning on your Home Server

- 1 Press the  (POWER) button for about 2 seconds until the  (POWER) indicator light blinks in orange. When the Home Server is completely turned on, the power indicator light stops blinking and turns green.



 (POWER) button /  (POWER) indicator light

Turning off your Home Server



- 1 Press the  (POWER) button for about 2 seconds until the  (POWER) indicator light blinks in green.

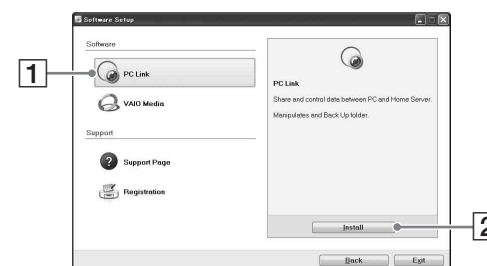


Tip Your Home Server is designed to be always on and has power saving features to reduce energy use when no being accessed.

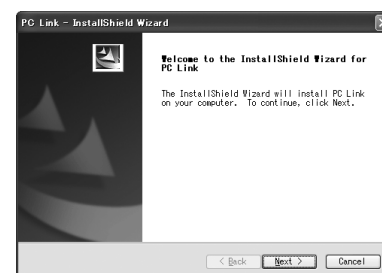
Installing Software

The PC Link software provides you with easy ways to keep your folder content updated (data synchronization) between your personal computer and your Home Server.

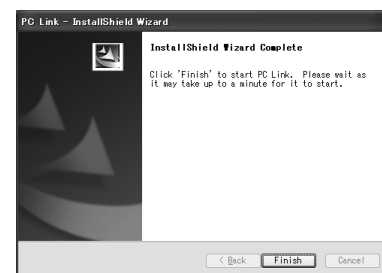
- 1 Insert the supplied CD-ROM disc into the optical disc drive of your computer.
- 2 The License Agreement is displayed, read the terms and conditions, select “I accept the terms of the license agreement,” and click “Next.” The software setup window appears.
- 3 Click “PC Link”  and then “Install” .



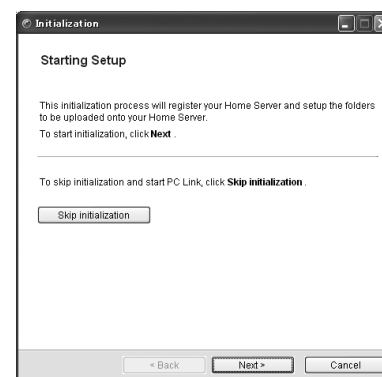
- 4 Click “Next” on the InstallShield Wizard.



- 5 Click “Finish” upon completion of the software installation.



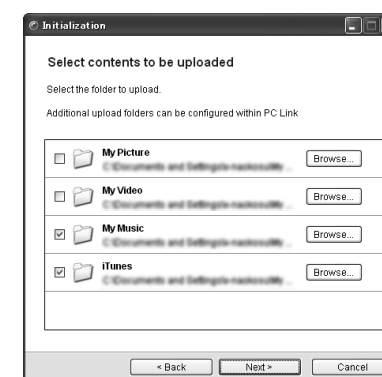
- 6 Click “Next” when the PC Link software starts.



- 7 Select a Home Server and click “Next.”

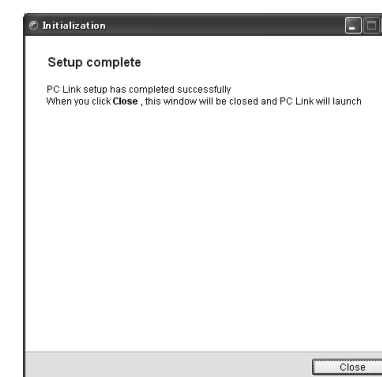


- 8 Select your desired folder(s).



Tip If the above window does not appear, please refer to “When your Home Server has a global IP address” (page 47) in the Setup Guide.

- 9 Finish the setup.



When you click “Close,” the PC Link software will begin to upload the selected folders.