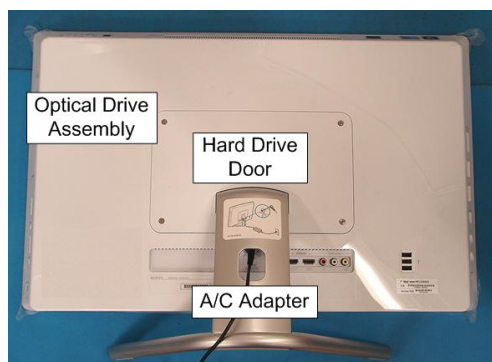


IMPORTANT! **PLEASE READ BEFORE YOU START**

These easy instructions will guide you through the Hard Drive replacement process.

- ✓ Before you begin, place your notebook computer on a clean or covered surface to avoid damage to the computer's case.*
- ✓ Follow the ESD (Electrostatic Discharge) damage prevention instructions:
 - Hold parts by the edges, away from exposed circuitry when possible.
 - Do not walk around excessively as this promotes static build-up.
- ✓ Before you begin, remove any jewelry you may be wearing to prevent scratches to the surface of your notebook computer.*
- ✓ The appearance of the electronic components shown in the illustrations may differ from the components shipped. This slight difference does not affect the accuracy of these instructions.

* Sony is not responsible for damage caused by incorrect handling of the notebook computer.



Prepare the Computer

⚠ CAUTION: Make sure the computer is turned off and the AC Adapter is disconnected. Failure to do so can result in damage to the computer.

Step 1. Place the computer, with the LCD Panel facing down, on a protected surface with the Stand facing you.



Disconnect the AC Adapter

Step 2. The A/C Adapter connects to the unit under the Stand. Reach behind the Stand to disconnect the A/C Adapter from the unit and remove.



Hard Drive Door

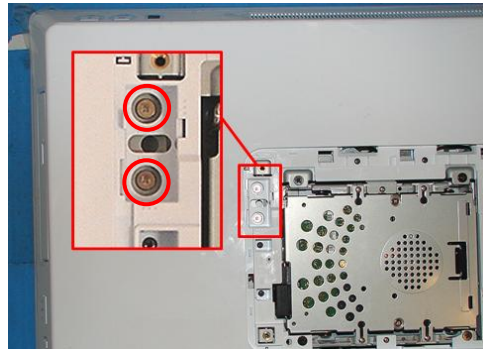
Hard Drive Door Removal (Steps 3-4)

Step 3. Using the enclosed magnetic screwdriver, remove the four (4) screws securing the Hard Drive Door.

Put the Screws aside to re-secure the Hard Drive Door later in the procedure.

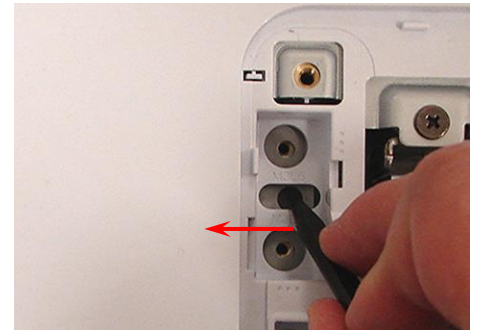


Step 4. Grasp the Door stand and rotate up to disengage the Tabs holding the Door in place. When the Tabs release, lift the Door straight up to remove.

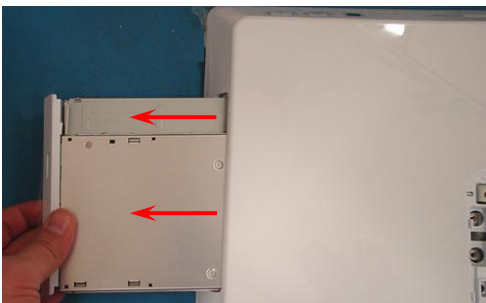


Optical Drive Removal (Steps 5-7)

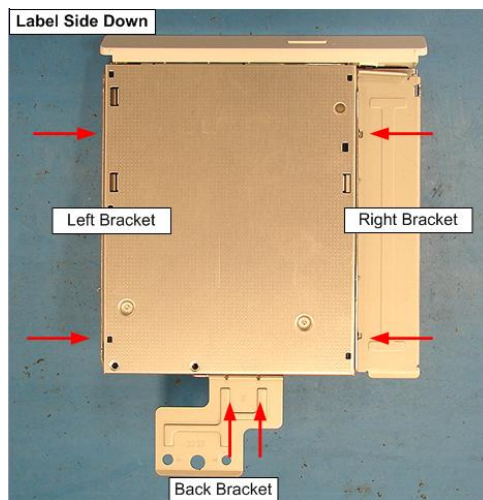
Step 5. Using the enclosed magnetic screwdriver, remove the two (2) screws securing the Optical Drive Assembly.



Step 6. Insert a non-marking tool into the hole in the ODD Bracket and slide to the Left.

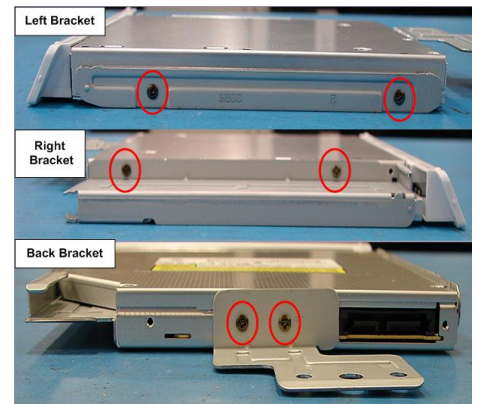


Step 7. Carefully remove the ODD Assembly from the unit.



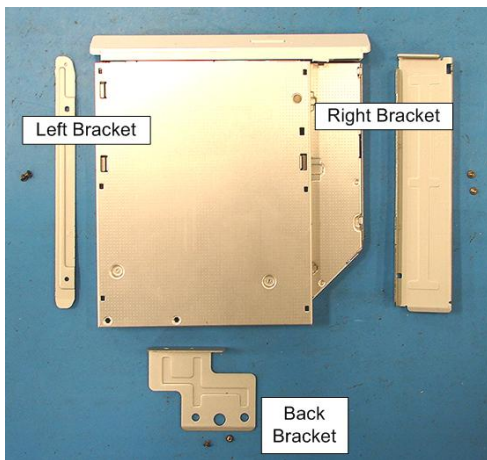
Optical Drive Disassembly (Steps 8-10)

Step 8. Set the Optical Drive (Label Side Down) on a clean work surface. Identify the six (6) screws which secure the brackets to the Hard Drive.



Step 9. Remove two screws from each Bracket.

Put the Screws aside to secure the Bracket to the new Hard Drive later in the procedure.

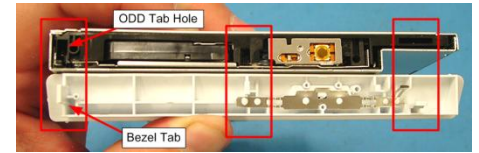


Step 10. Arrange the Brackets & screws as shown above. Set the old ODD aside.

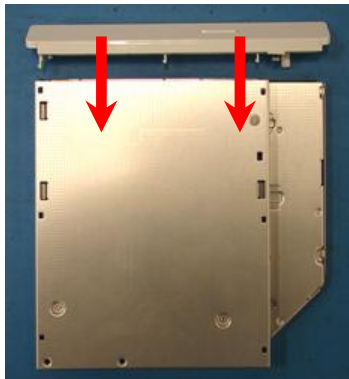


ODD Assembly (Steps 11-14)

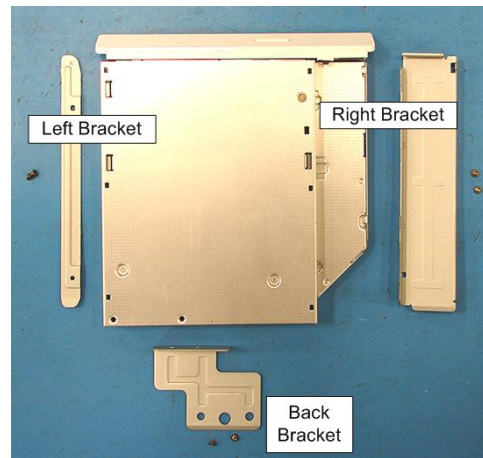
Step 11. Take the new ODD and Bezel provided in the CRU kit and prepare for assembly.



NOTE: Identify tabs on the Bezel and tab holes located on the ODD.

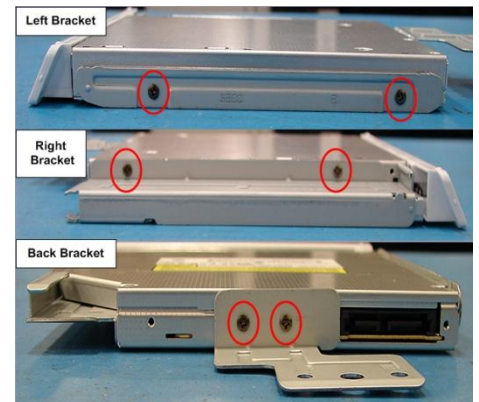


Step 12. Align the tabs on the Bezel with the tab holes located on the ODD. Carefully press the Bezel into place.

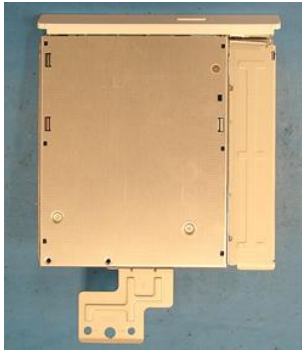


Step 13. Position the new ODD (Label side down) and identify the correct Bracket with the corresponding ODD side (as shown).

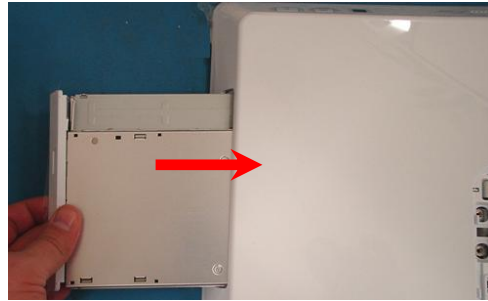
Take note of the different shapes for each bracket and the proper alignment of the screw holes.



Step 14. Using the ODD Screws, install the ODD Brackets onto the new ODD.



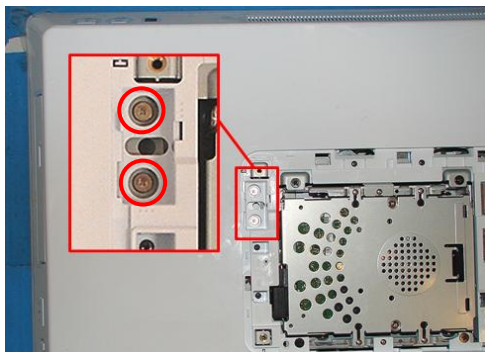
NOTE: After installation, all brackets should sit flush with the ODD. The stamped letters located on the brackets should all be facing the same direction.



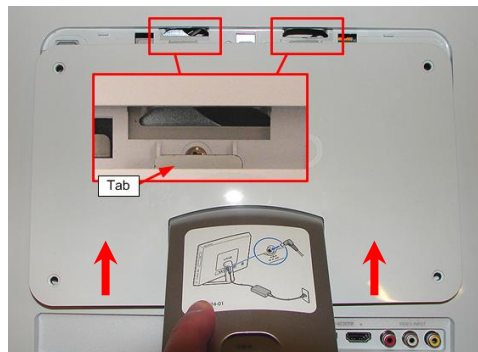
ODD Installation (Steps 14-20)

Step 15. Align the ODD assembly properly (label side down) and slide into the Computer.

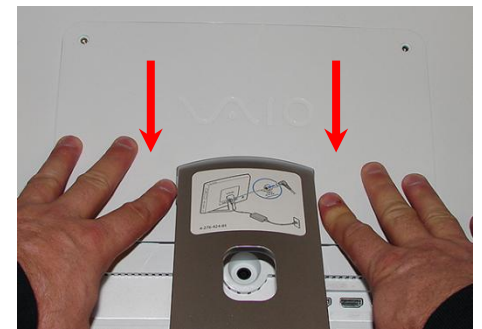
Step 16. Make sure the new ODD is seated flush on the edge of the Computer.



Step 17. Reinstall the two (2) ODD Bay screws to secure the ODD Drive Bay.



Step 18. Align the Tabs on the Top of the Hard Drive Door with the Notches at the top of the Hard Drive Bay. Slide the Hard Drive Door up to secure the Tabs.



Step 19. Press the Door down to seat the remaining Door Tabs. Verify that the Door sits flush with the unit.



Step 20. Re-install the four (4) Hard Drive Door Screws to secure the Door.

Step 21. Reconnect the AC Adaptor.

Power on your computer and continue with the recovery process by following the instructions described on the back of the recovery disk's case.

Return the old Optical Drive to Sony using the included shipping instructions.