

IMPORTANT! PLEASE READ BEFORE YOU START

These easy instructions are intended to guide you through the replacement process. If you need additional help, please call 1-866-651-7669 for technical support from 9:00 am to 11:00 pm EST.

- ✓ Before you begin, place your notebook computer on a clean or covered surface to avoid damage to the computer's case.*
- ✓ Follow the ESD (Electrostatic Discharge) damage prevention instructions:
 - Hold parts by the edges, away from exposed circuitry when possible.
 - Do not walk around excessively as this promotes static build-up.
- ✓ Remove jewelry before you begin work to avoid scratching the surface of your notebook computer.*
- ✓ The appearance of the electronic components shown in the illustrations may be different from the components shipped. This slight difference does not affect the accuracy of these instructions.

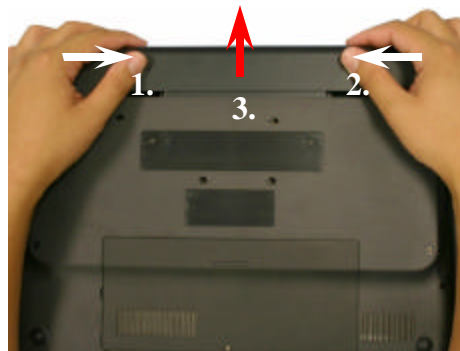
* Sony is not responsible for any loss of data associated with your computer or any damage caused by incorrect handling of the computer under these procedures. The terms of your Sony limited warranty continue to apply.



Step 1. Prepare the Computer.

CAUTION: Make sure the computer is turned off, the lid is closed, and the AC Adapter is disconnected. Failure to do so can result in damage to the computer.

Place the computer upside down on a protected surface with the front edge facing you.



Step 2. Remove the Battery Pack.

Locate the release tab as shown in the picture.

1. Slide the left battery tab to the unlock position.
2. With your finger slide the right battery tab in the release direction and hold.
3. Push battery pack away from you to remove.



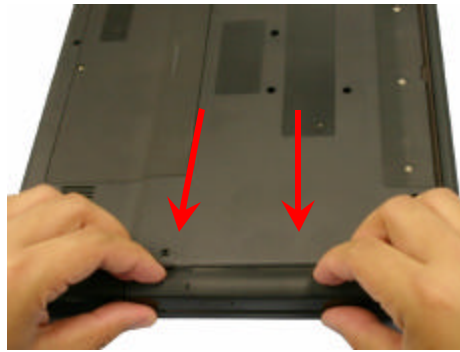
(ODD Removal) Steps 3-6

Step 3. Locate ODD Bay.

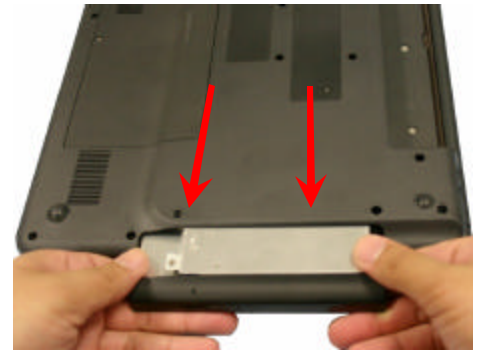
Rotate the computer with the Optical Disk Drive (ODD) Bay facing you as shown in the picture.



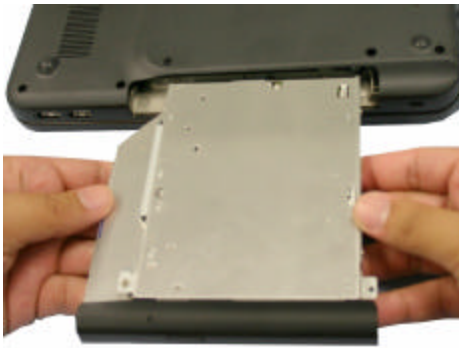
Step 4. Using the enclosed magnetic screwdriver, remove the three screws securing the ODD Bay.



Step 5 To initiate the removal of the ODD Bay, pull slightly the ODD door as shown in the picture.

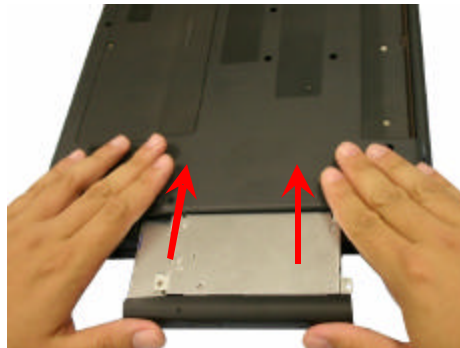


Step 6. With even force, slide out the ODD as shown. Some force may be required to unlock the ODD from the connector.



(ODD Reinstallation) Steps 7-10

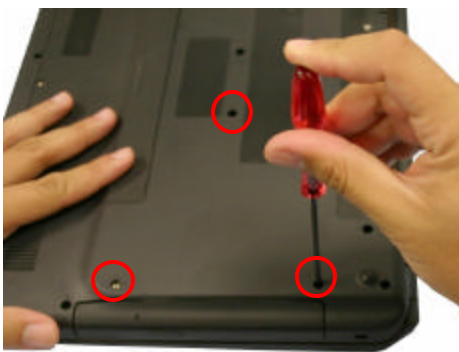
Step 7. Hold the new ODD Bay by the edges and align it with the opening. **IMPORTANT!** Install the new ODD in the correct position as shown in picture.



Step 8 With an even force slide in the new ODD Bay.



Step 9. Make sure the new ODD Bay is seated flush on the edge of the computer.



Step 10. Reinstall the three screws previously removed.

Step 11. Reinstall the battery pack and return the old ODD to Sony following the included shipping instructions.