

SONY

CPF-IX001

Quick Setup Guide

2-892-537-12(2)

© 2006 Sony Corporation
Printed in Malaysia

This Quick Setup Guide explains the preparation needed to enjoy music with the CPF-IX001. For details on each step, refer to the Operating instructions in the supplied CD-ROM.

CPF-IX001 Operating Instructions
for details on how to operate the CPF-IX001

M-crew Server Installation instructions
for details on how to install the M-crew Server

M-crew Server Help
(Use after installing the M-crew)
for details on how to operate the M-crew Server

Check the following website for the CPF-IX001 latest information, FAQ (Frequently Asked Questions), and firmware updates;

USA:
<http://esupport.sony.com/?ref=http%3A//www.sony.com/index.php>

Canada:
http://www.sony.ca/sonyca/view/english/warranty/consumer_support.shtml

Europe:
<http://support.sony-europe.com/main/main.asp?l=en>

Notes

- When using the CPF-IX001 with a wireless network, you need a wireless LAN router (access point, not supplied)
- A wireless connection (ad-hoc) cannot be made directly with a computer.

Setup Procedure

Wireless settings for the CPF-IX001 must be made from a computer that has a wired connection with the CPF-IX001. Be sure to perform the settings by following the procedure below.

Step 1 Installing M-crew Server



Step 2 Setting a wired connection



Step 3 Setting a wireless connection

Step 1

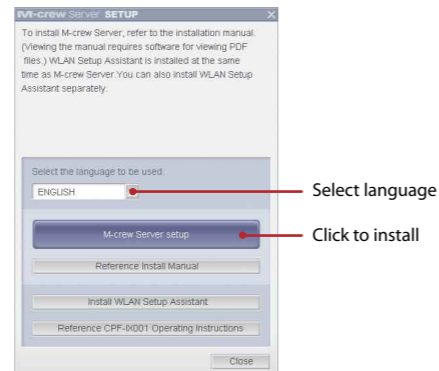
Install the M-crew Server Ver. 2.0 software and prepare the CPF-IX001.

1 Make sure that you have all the following items, which are required for setup.

- Main unit (CPF-NW001P)
- Network unit (NAS-IX001P)
- Subwoofer (SA-NW001P)
- Network cable for the CPF-IX001
- Remote commander (RM-ANU007)
- M-crew Server Ver. 2.0 software CD-ROM

2 Insert the supplied M-crew Server Ver. 2.0 software CD-ROM into your computer.

The "M-crew Server SETUP" window appears. Follow the instructions on the screen and install the software.



Notes

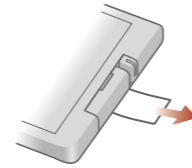
- If the window does not open, double-click the CD-ROM "Setup.exe" icon.
- With some computer environments, you may need to set the Windows and security software firewall.
- If the "Windows Security Alert" window appears, click [Unblock] to unblock the program.



- If the "ICF SETTINGS" window automatically appears, click [Apply], and "OK" appears for all status items, then click [Close].

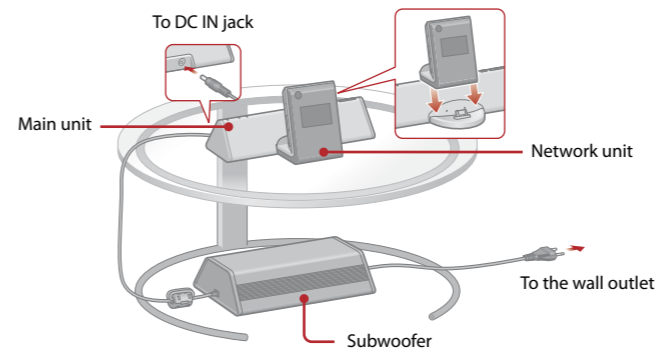
3 Prepare the remote.

Pull out the insulating sheet.



4 Install the CPF-IX001.

Connect the network unit on the main unit, and connect the subwoofer to the DC IN jack on the back of the main unit.



Note

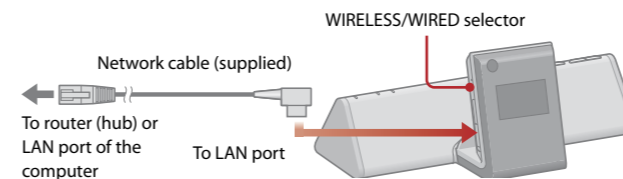
Be sure to turn off the subwoofer when connecting or disconnecting the network unit.

Step 2

The CPF-IX001 wireless settings are made using the browser, so first establish a wired connection between the CPF-IX001 and your computer.

1 Connect the CPF-IX001 to the network using a wired connection.

Connect the CPF-IX001 to your router (hub) or directly to the LAN port of the computer. Use the supplied network cable. Check that the WIRELESS/WIRED selector on the network unit is set to WIRED.

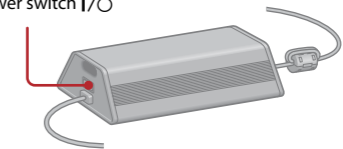


Note

When using the CPF-IX001 with a fixed IP address, refer to "Advanced network settings" in the Operating Instructions.

2 Turn on the system.

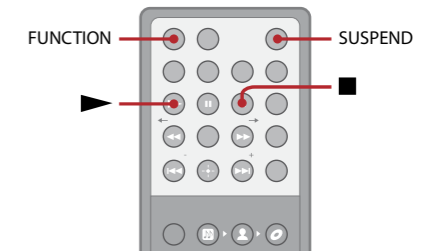
Power switch I/O



Note

The demonstration display appears on the network unit. If it does not appear, check the connection (Step 1-4).

3 Press FUNCTION repeatedly until the LINE indicator on the main unit turns off.



4 Press SUSPEND to start up the network unit.

The model name appears in the display and the connection starts. "Configuring" flashes and the network is configured.

Note

When connected one-to-one with a computer without using a router, it takes a few minutes to configure the network. In addition, a warning message appears on the computer to advise that the connection is restricted.

5 Press ► and check that music or sample music is played.

It may take some time until music playback starts depending on the network status. During the sample music playback, the following appears in the display.



Note

If "SERVER?" appears, select the M-crew server according to the following procedure.

- Press ENTER.
- Press ◀ or ▶ repeatedly until "M-crew v2 on XXXX (your computer name)" appears, then press ENTER.

This completes the settings when using the CPF-IX001 with a wired connection.

When using the CPF-IX001 with a wireless connection, press ■ to stop music playback, then proceed to Step 3.

Step 3

Make the wireless settings.

1 Confirm the settings of your wireless system.

Check the following items of your wireless LAN router to set the same information for the CPF-IX001.

SSID (Wireless Network Name): _____

If your wireless LAN router security is enabled,

Security mode: _____

Key: _____

Key Number _____

(when using WEP): _____

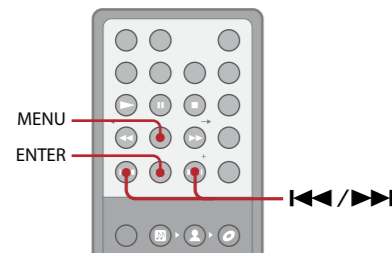
Tips

- For details on how to check the wireless LAN router settings, refer to the operation manual of your wireless LAN router.
- Check that your wireless LAN router uses the latest firmware version. For details, refer to the operation manual of your wireless LAN router.

2 Press MENU.

Press ◀◀ or ▶▶ repeatedly until “WLAN SETUP?” appears in the display, then press ENTER.

The IP address appears in the display.



3 Start up the “WLAN Setup Assistant” on your computer.

Select [Start] – [All Programs] – [M-crew Server] – [TOOLS] – [WLAN Setup Assistant].

4 Press NEXT.

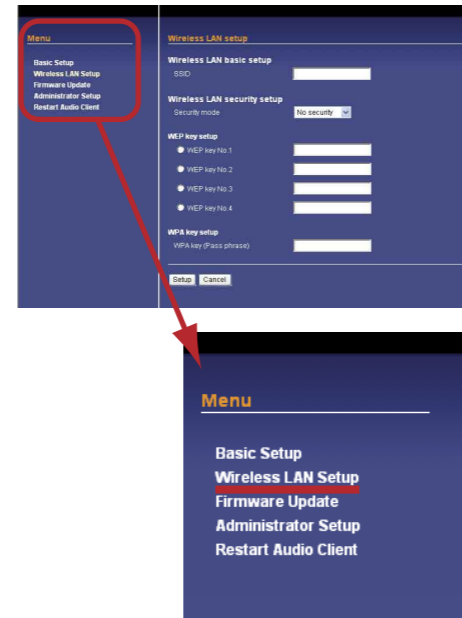
Wait a moment for Internet Explorer to start up.

5 Enter “root” to “User name” section. Leave “Password” section blank, and click [OK] to login.

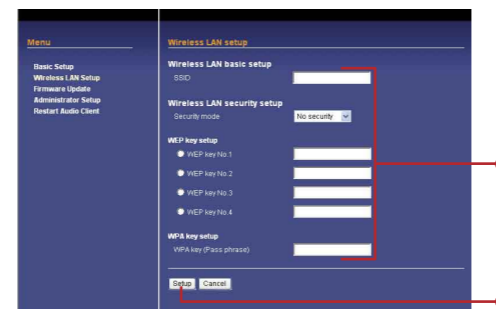
6 Select the language.

7 Click “Wireless LAN Setup” in the Menu on your computer.

The Setup screen appears.



8 Enter the SSID, Security mode and Key that you checked in Step 3-1, and click [Setup].

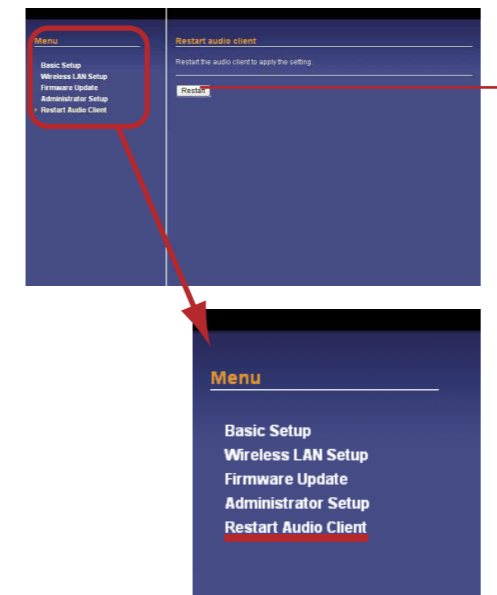


Tips

- When using WEP, check that the router Key No. and the above setting match.
- In most cases only one WEP Key No. is required, in which case enter the WEP Key No. to “WEP Key No. 1.”

9 After finishing the setup, click “Restart Audio Client” in the Menu, and then click [Restart].

The CPF-IX001 restarts, and the settings are complete.



10 Set the WIRELESS/WIRED selector to WIRELESS (see Step 2-1), and disconnect the network cable from the network unit.

“Configuring” flashes in the display and the network is configured.

Tip

“Configuring” may flash for several minutes.

11 Press ▶ and check that music or sample music is played.



Troubleshooting

Step	Symptom	Action
1-2	The firewall settings screen appear.	Follow the instructions on the screen to allow the M-crew communication.
2-4	“Configuring” continues to flash in the display for longer than five minutes without the configuration being completed.	If an IP address has been specified in your computer’s network settings, change the setting to automatically acquire the IP address.
	“No Server” appears in the display.	Follow the procedures below one by one. <ol style="list-style-type: none"> 1 Confirm the security software (Firewall) setting on your computer. 2 Restart the M-crew Server. <ol style="list-style-type: none"> 2-1 Select “Stop music server” on the M-crew Server task tray icon. 2-2 Select “Start music server” on the M-crew Server task tray icon. 3 Reboot your computer. 4 Execute “DatabaseClear.exe” to initialize the database (usually located in C:\Program Files\Mcrewserver). When the database is initialized the music links are deleted, so reset the links.
3-1, 3-8	What is “SSID” or “Security Mode”?	“SSID” is the wireless LAN identifier and “Security Mode” is a communication encryption method. These may be included with your access point. If your wireless key is a string of 10 characters, select WEP (64-bit) for “Security Mode.” For more details, check the settings of your access point.
3-3	The “WLAN Setup Assistant” does not appear on the screen.	If you are using a proxy server with your browser, disconnect it temporarily.
3-11	“Check Net” appears in the display while the wireless icon (📶) is flashing.	The signal is not strong enough. Move the CPF-IX001 closer to the access point. If the CPF-IX001 is already close to the access point, check the configuration of the access point to ensure that the access point is sending a signal. Once the changes have been made to the access point, toggle the WIRED/WIRELESS selector to reconfigure setting. Check the wireless channel of the wireless LAN router. Channels 1 to 11 can be used with the CPF-IX001.
	“No Server” appears in the display while the wireless icon (📶) lights up.	The wireless key may have been entered incorrectly. Go back to a wired connection and perform the settings again from Step 3-2.