

SONY[®]

SONY DISPLAYS. DESIGNED FOR HUMAN PERFORMANCE.[™]

Offering the perfect combination of solid performance and value price, StylePro[™] Series Flat Panel LCDs from Sony give your company a productivity edge and bottom-line savings. Affordable and efficient, the StylePro[™] line provides ergonomic comfort with its ErgoStand[™] design and ErgoBright[™] technology, while delivering space efficiency with its slim bezel and footprint. In addition to Sony's renowned quality and reliability, valuable after-market programs provide even more peace of mind.



FLAT PANEL LCD

ErgoStand[™] design
ErgoBright[™] technology
Super-thin bezel design
Internal power supply
Premium image quality



Ergonomically designed. Space-conscious. Energy-efficient.

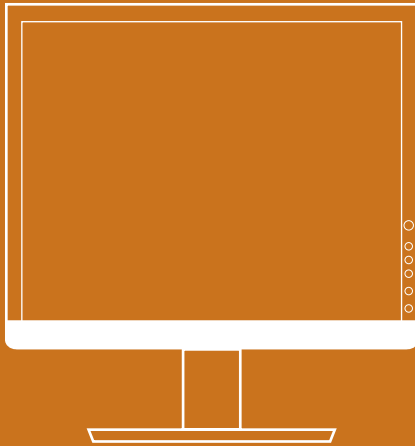
Smooth ErgoStand™ Design: Height control and tilt combine to achieve custom viewing positions.

Auto-sensing ErgoBright™ technology: Brightness automatically adapts to your workspace environment and saves energy.

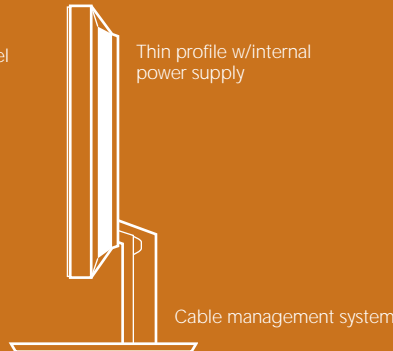
Super-thin bezel design: Desktop savings; wall and arm mountable or stackable.

Internal Power Supply: Built-in power, plus cable management system for clean desktop and easy, flexible setup.

Premium image quality: Auto ImageSet™ technology and sharpness control optimize picture performance.

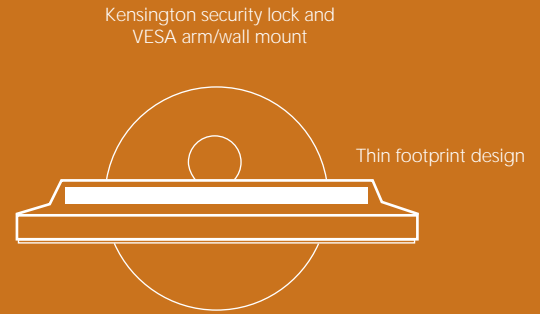


Super-thin bezel



Thin profile w/internal power supply

Cable management system



Kensington security lock and VESA arm/wall mount

Thin footprint design

Swivel base (19" model only)

Model Number	SDM-S53, SDM-S53/B	SDM-S73, SDM-S73/B	SDM-S93, SDM-S93/B
Viewable Image Size	15.0"	17.0"	19.0"
Native Resolution	1024 x 768	1280 x 1024	1280 x 1024
Screen Coating	Anti-Glare/Protective	Anti-Glare/Hard Coating	Anti-Glare/Hard Coating
Design Color	Black or Two-Tone Gray	Silver & Gray or Black	Silver & Gray or Black
Super-Thin Bezel (width)	0.65"	0.54"	0.67"
Pixel Pitch	0.297 mm	0.264 mm	0.294 mm
Horizontal Scan (kHz)	28-61 kHz	28-80 kHz	28-80 kHz
Vertical Refresh (Hz)	48-75 Hz	48-75 Hz	48-75 Hz
Response Time (rise/fall)	25ms	16ms	25ms
Contrast Ratio (max.)	500:1	500:1	600:1
Luminance (max.)	250cd/m2	250cd/m2	250cd/m2
Viewing Angle (H/V)	160°/140°	160°/160°	170°/170°
Auto-Sensing ErgoBright™ Technology	High 250cd/m2, Middle 200cd/m2, Low 100cd/m2	High 250cd/m2, Middle 200cd/m2, Low 100cd/m2	High 250cd/m2, Middle 200cd/m2, Low 100cd/m2
ErgoStand™ Control System	Tilt Range -5° to +30°; Ergonomic Fixed Height	Tilt Range -5° to +30°; Ergonomic Fixed Height	Tilt Range -5° to +30°; Swivel Range 175° Ergonomic Fixed Height
VESA Wall/Arm Mount	75 mm	75 mm	100 mm
Video Input Connector(s)	Analog (HD15)	Analog (HD15)	Analog (HD15)
Kensington Lock Compatible	Yes	Yes	Yes
Internal Power Supply	Yes	Yes	Yes
Cable Management System	Yes	Yes	Yes
US Government Trade Compliant	Yes	Yes	Yes
Power Management	Normal Operation (max.) 25W/Standard Condition (typ.) 18W/ Active Off (max.) 1W/Main Switch Off 0W	Normal Operation (max.) 45W/Standard Condition (typ.) 35W/ Active Off (max.) 1W/Main Switch Off 0W	Normal Operation (max.) 50W/Standard Condition (typ.) 40W/ Active Off (max.) 1W/Main Switch Off 0W
ErgoBright™ Technology Power Management	High 18W/Middle 18W/Low 13W	High 35W/Middle 35W/Low 17W	High 40W/Middle 40W/Low 20W
Dimensions (WxHxD)	13.4" x 14.6" x 7.3" (w/stand) 13.4" x 10.9" x 2.1" (w/o stand)	14.5" x 16.3" x 8.5" (w/stand) 14.5" x 12.5" x 2.4" (w/o stand)	16.3" x 17.6" x 9.3" (w/stand) 16.3" x 13.9" x 2.6" (w/o stand)
Weight (Display)	8.1 lbs. (w/stand)/5.9 lbs. (w/o stand)	11.9 lbs. (w/stand)/9.0 lbs. (w/o stand)	14.6 lbs. (w/stand)/11.4 lbs. (w/o stand)
Regulation Compliance	Power Management: International Energy Star; Emissions/Ergonomics: TCO '99 Designed For: PC2001; Windows® 95, 98, 2000, Windows NT®, Windows XP®; Macintosh®; Plug and Play: DDC 2B		
On-Screen Controls	Power, Menu, Contrast, Brightness, Eco Mode, Color Temperature, Backlight, Auto Adjust, H/V Adjust, Phase, Pitch, Reset, Gamma, Menu Lock, OSD Position, Multi Lang. (Eng., Fre., Spa., Ital., Ger., Jap., Dut., Swe., Rus., Chi.)		
Limited Warranty	3 years (parts, labor, backlight)	3 years (parts, labor, backlight)	3 years (parts, labor, backlight)
Supplied Accessories	CD-ROM User Manual, AC Power Cord, Quick Setup Guide, Windows® Utility Files, Macintosh® Utility Files, HD15 Video Cable, Warranty Card	CD-ROM User Manual, AC Power Cord, Quick Setup Guide, Windows® Utility Files, Macintosh® Utility Files, HD15 Video Signal Cable, Warranty Card	CD-ROM User Manual, AC Power Cord, Quick Setup Guide, Windows® Utility Files, Macintosh® Utility Files, HD15 Video Signal Cable, Warranty Card



For more info, log on to
sony.com/displays/b2b

Computer Interface: The computer industry lacks standards, and therefore, there are a multitude of varying software packages and add-on hardware options. These displays are not manufactured to any specific software, and Sony does not and cannot make any warranty or representation with respect to the performance of this product with any particular software packages and/or non-Sony add-on hardware options except those mentioned here. Sony hereby disclaims any representations or warranty that this product is compatible with any combination of non-Sony products you may choose to connect. While Sony representatives or Sony authorized dealers may be able to assist you and may make recommendations, they are NOT authorized to vary or waive this disclaimer. Purchasers must determine for themselves the suitability and compatibility of the hardware and software in each and every particular instance.

© 2003 Sony Electronics Inc. All rights reserved. Reproduction in whole or in part without written permission is prohibited. All rights reserved. Sony, the Sony logo, DeluxePro, ErgoStand, ErgoBright and other marks are trademarks of Sony. Microsoft, the Windows logo and Windows are registered trademarks of Microsoft Corporation. Mac and Macintosh are trademarks of Apple, Inc. All other trademarks are the properties of their respective owners. Features and specifications are subject to change without notice. These monitors are Energy Star Compliant when used with a computer equipped with VESA Display Power Management Signaling (DPMS). As an International Energy Star Partner, Sony has determined that these products merit the International Energy Star Program for energy efficiency. The Energy Star emblem does not represent EPA endorsement of any product or service. Screen images are simulated.