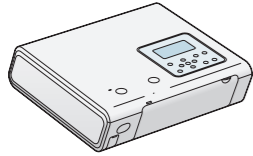
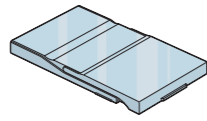

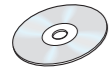

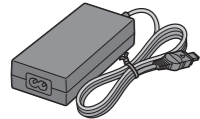
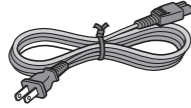
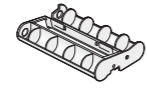

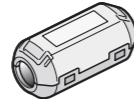


Follow the procedures in steps 1 through 6 to make a print.
For details, see the Operating Instructions.

1 Check the contents of the package.

<p>Printer (1)</p> 	<p>Paper tray (1)</p> 	<p>Remote commander (1)</p> 
<p>CD-ROM (1)</p>  <ul style="list-style-type: none"> • Sony DPP-FP50 Printer Driver Software for Windows® XP Professional/Windows XP Home Edition/Windows XP Media Center Edition/Windows 2000 Professional/Windows Millennium Edition/Windows 98 Second Edition • PictureGear Studio Ver.2.0 	<p>Video connecting cable (1)</p> 	
<p>AC adapter (1)</p> 	<p>AC power cord (1)</p> 	<p>Cleaning cartridge (1)</p> 
 <ul style="list-style-type: none"> • Operating Instructions (1) • Quick Start Guide (this leaflet, 1) • Warranty (1) • Sony End User Software License Agreement (1) • Sample color printing pack (1) 		<p>Clamp filter (1)</p> 

2 Prepare the sample color printing pack (supplied).

The following printing packs are also available as optional accessories.

For post card size printing:



SVM-F40P

- Post card (4 x 6 inch) size print paper (two packs with each 20 sheets)
- Print cartridge for 40 prints (1)

For 3.5 x 5 inch size printing:



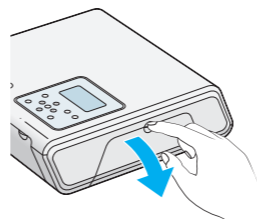
SVM-F40L*

- 3.5 x 5 inch size print paper (two packs with each 20 sheets)
- Print cartridge for 40 prints (1)

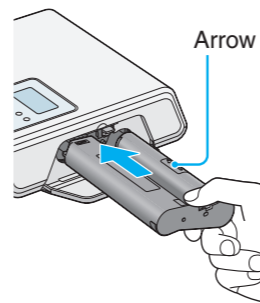
For the details, see page 11 of Operating Instructions. (*In some regions, 3.5 x 5 inch print paper is not sold.)

3 Load the print cartridge.

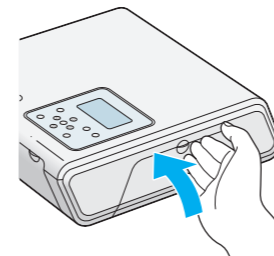
1 Pull and open the cartridge compartment lid.



2 Insert the print cartridge.

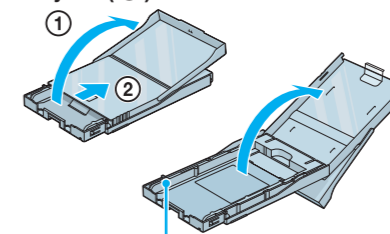


3 Close the lid.



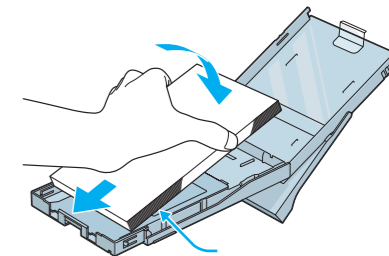
4 Insert the print paper.

1 Open the eject paper tray (1), and then slide and lift open the paper tray lid (2).



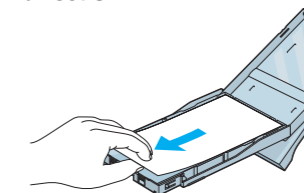
Tray adaptor (Remove it when the Postcard size print paper is used.)

2 Insert the print paper.



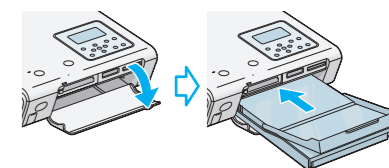
Face stamp marker (Postcard size) or arrow imprint (3.5 x 5 inch size) toward feeding direction.

3 Remove the protective sheet, and close the paper tray lid, and then slide it to the paper feeding direction.



You can use the protective sheet as cleaning sheet. Keep it together with the cleaning cartridge.

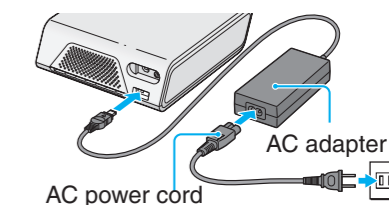
4 Pull and open the printer's paper tray compartment lid and insert the paper tray into the printer.



Insert it firmly until it clicks into place.

5 Connect to the AC outlet.

Insert one plug of the AC power cord to the wall outlet and the other to the AC adapter. Then connect the plug of the AC adapter to the DC IN jack of the printer.



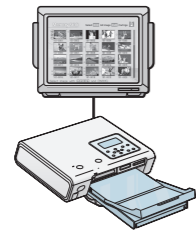
6 Print an image.

Depending on the memory card or device you use, the printing procedures differ:

Printing an image stored on a memory card or an external device.

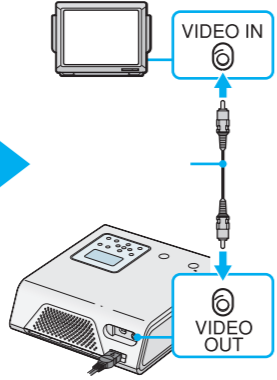
- "Memory Stick"
- CompactFlash card
- SD card
- External device such as camera

Printing using a connected TV monitor



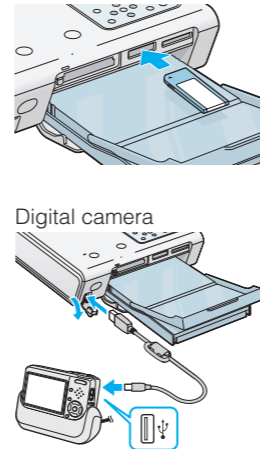
Preparations

1 Connect the printer to a TV monitor and turn on the TV monitor.

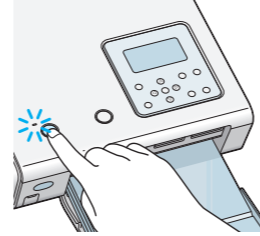


Set the TV monitor in the video mode.

2 Insert a memory card or connect an external device.
"Memory Stick"

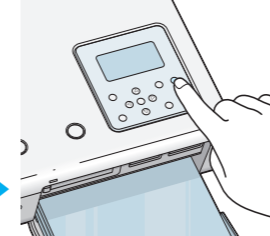


3 Press ON/STANDBY to turn on the printer.



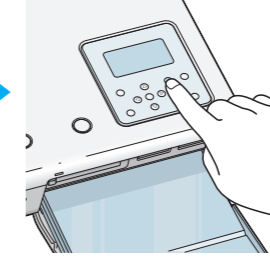
Displaying images

4 Display the images on the TV monitor.



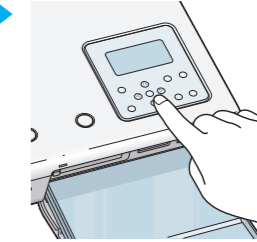
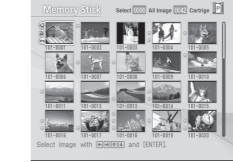
If the LCD mode is selected, press MONITOR OUT to display the images on the TV monitor.

5 Press INPUT SELECT to display the desired memory card or external device on the TV monitor.



Selecting an image

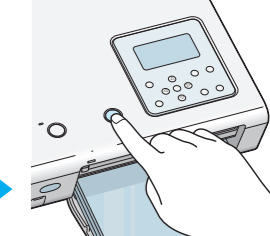
6 Select an image for printing.



Press $\Delta/\nabla/\leftarrow/\rightarrow$ to move the yellow frame (cursor) to the image you want to print.

Printing

7 Press PRINT.



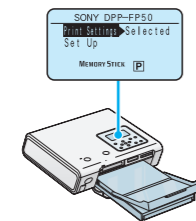
To print multiple copies
See page 24 on the operating instructions.

Printing an image from a PictBridge-compliant digital camera

See page 57 of the Operating Instructions.

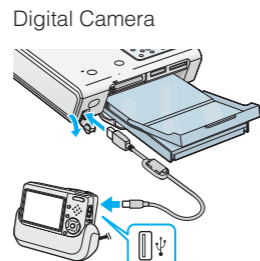
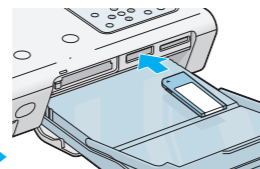


Printing using the printer's LCD display

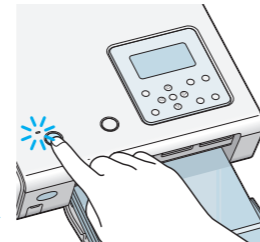


Preparations

1 Insert a memory card or connect an external device.
"Memory Stick"

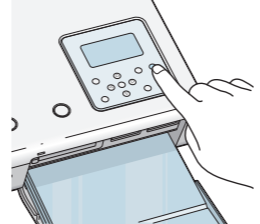


2 Press ON/STANDBY to turn on the printer.

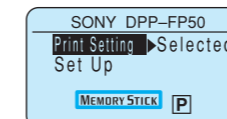
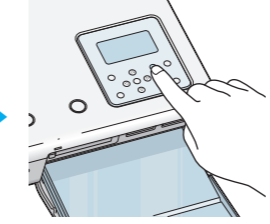


Displaying images

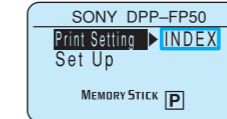
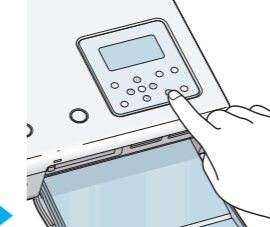
3 Press MONITOR OUT to display the menu on the LCD display.



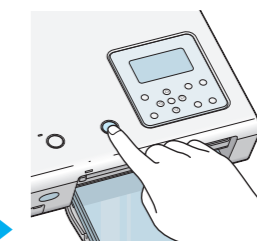
4 Press INPUT SELECT to display the desired memory card or external device on the LCD display.



5 Press AUTO PRINT to display "INDEX".



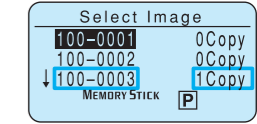
6 Press PRINT.



The index of the images in the memory card or an external device is printed, allowing you to check the image numbers.

Selecting an image

7 Select an image for printing.
Press PRINT and press Δ/∇ to select the desired image number and then press ENTER.



To print multiple copies
Press ENTER repeatedly to display the desired number.

Printing an image from a PC

See page 58 of the Operating Instructions.



Printing

8 Press PRINT.