

- 3 Double-click on the [DCIM] folder, then open folder “XXXMSDCF” or “MSSONY” in which the desired images are located.
- 4 Select the images to be copied by dragging and dropping them to your computer’s hard disk icon.

4 Additional Information

- This Quick Start Guide shows only basic connection steps. Refer to the Operating Instructions of your camera for complete information.
- The application software is also supplied with your camera. This software can help you copy, view and edit images. To install this software, please refer to the Operating Instructions of your camera and the software’s help files.
- Be sure to register your Sony Digital Still Camera at www.sony.com/productregistration. This helps you with information updates on your camera and access to our Digital Imaging Cafe tutorials.
- If you need further assistance, please check Sony’s support website at www.sony.com/support and select “Digital Imaging”.

If your Digital Camera is not working properly
DO NOT RETURN TO THE STORE OF PURCHASE

For Customer Support and Service for your Digital Camera:

- Please visit www.sony.com/support
- Call 1-888-449-SONY (7669)



2667460110

Quick Start Guide for connection to your computer

Follow these instructions to transfer images from your camera to your computer.

These instructions depend on your computer environment, so be sure to follow the instructions which relate to your situation.

This Quick Start Guide shows only the basic steps for connection. Refer to your digital still camera’s Operating Instructions for further details or visit www.sony.com/support.

1 Choose your Computer Environment and Perform Setup

Be certain to choose your OS and follow the instructions carefully in order to insure proper operation.

Microsoft® Windows XP Home Edition/Professional

There is no need to install the supplied software.

However, if you want to use the supplied software, it can be installed by following the procedure below for “Windows Millennium Edition (Me)/2000 Professional”.

Microsoft® Windows Millennium Edition (Me)/2000 Professional

Do not connect your camera to your computer until the supplied software is installed.

- 1 Start up your computer and insert the supplied CD-ROM in the CD-ROM drive.
- 2 Click [Install] on the title screen.

- 3 Select the desired language, then click [Next].
The “License Agreement” screen appears.
- 4 Follow the instructions on the screen to complete the installation.

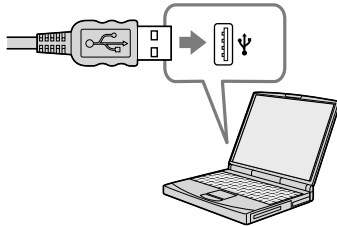
Macintosh® OS 9.1/9.2, OS X (v10.0 or later)

There is no need to install the supplied software.

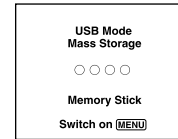
2 Connect your Camera to your Computer with the USB Cable

When connecting your camera to your computer, be sure to use a fully charged battery pack, batteries with enough capacity or an AC Adaptor if available.

- 1 Insert the “Memory Stick”.
- 2 Turn on the computer.
- 3 Turn on the camera, then connect the USB cable to the camera.
 - When using the Cyber-shot Station, connect the USB cable to the Cyber-shot Station, and do not turn on the camera in this step. Turn on the camera when you mount the camera in the Cyber-shot Station after performing step 4.
- 4 Connect the USB cable to the computer.



- 5 “USB Mode Mass Storage” appears on the screen.



3 Select Images and Copy to your Computer

Microsoft® Windows XP Home Edition/Professional

- 1 Make sure your camera and your computer are connected and both are turned on.
- 2 Windows XP is set so that the OS AutoPlay Wizard activates. Follow the Wizard instructions to copy images.

Microsoft® Windows Millennium Edition (Me)/2000 Professional

- 1 Make sure your camera and your computer are connected and both are turned on.
- 2 Double-click [My Computer] and select [Removable Disk]. The contents of the “Memory Stick” appears.
- 3 Double-click on the [DCIM] folder, then open folder “XXXMSDCF” or “MSSONY” in which the desired images are located.
- 4 Select the images to be copied by dragging and dropping them to your computer’s desired folder.

Macintosh® OS 9.1/9.2, OS X (v10.0 or later)

- 1 Make sure your camera and your computer are connected and both are turned on.
- 2 Double-click the new icon now appearing on the desktop. The contents of the Memory Stick media will appear.