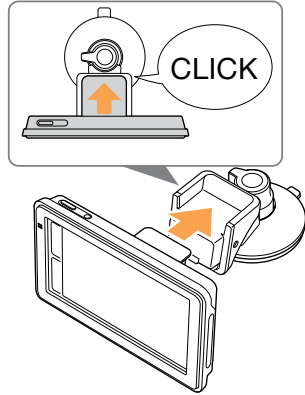
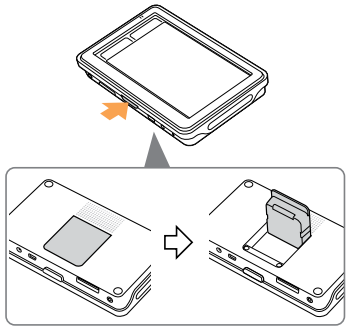


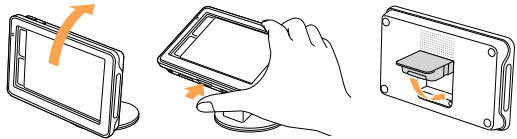
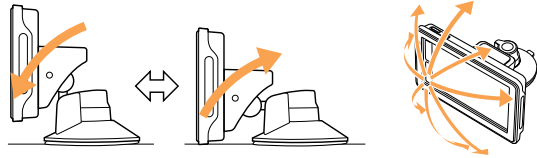
Mounting your nav-u

1. Press “Open/Release” button on unit to open GPS antenna
2. Mount by sliding antenna into slot on cradle



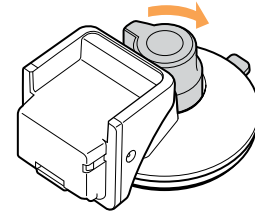
3. Push firmly until you hear “click”

4. Adjust monitor angle for optimal viewing

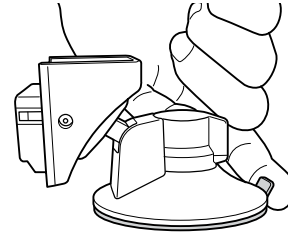


5. Press “Open/Release” button to release nav-u from cradle

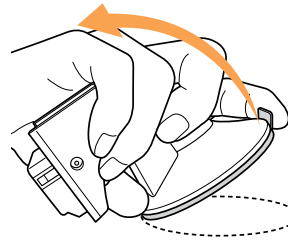
Detaching the Cradle



1. Turn knob clockwise to relieve suction



2. Use tab to help lift cradle from surface



3. Peel firmly to release

IMPORTANT:
FOLLOW THESE INSTRUCTIONS TO AVOID DAMAGING THE CRADLE'S MOUNTING SURFACE