

SONY®

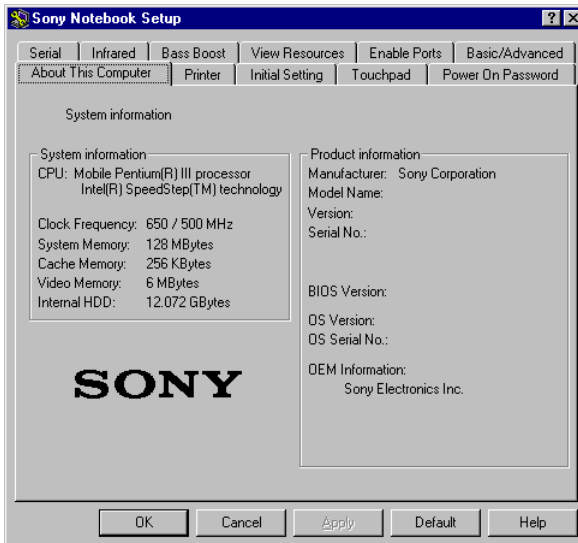
Customizing Your VAIO® Z505 SuperSlim Pro™ Notebook

You can customize the settings of your notebook. The following sections briefly describe how to change your computer's default settings. You can also refer to Sony Notebook Setup Help for more detailed information.

Displaying the Sony Notebook Setup Screen

To display the Sony Notebook Setup screen:

- 1 Click the Start button on the Windows® taskbar.
- 2 Point to VAIO and click Sony Notebook Setup.



- 3 Select the tab for the item you want to change. See “Sony Notebook Setup Tabs” on page 2.
- 4 After you finish, click OK.

Sony Notebook Setup Tabs

<i>Tab</i>	<i>Description</i>
About This Computer	Display system information, including memory capacity, serial number, and BIOS version.
Printer	Change printer port mode settings.
Initial Setting	Change the volume of the sounds that play while the operating system is loading. Select the order of drives and devices from which you want to load the operating system.
Touchpad	When you connect an optional mouse to your computer, you can make your touchpad inactive. You can also customize your mouse settings using the mouse utility.
Power On Password	Set the password to secure your computer.
Bass Boost	Turn the Bass Boost function on/off (available only when headphone is used). You can also check the effect of the Bass Boost function by selecting a sample from "Sound file" and playing it.
Enable Ports	Enable or disable ports. Disabling ports releases resources to the system. To change the serial or Infrared settings, click Advanced on the Basic/Advanced tab.
Basic/Advanced	Toggle between Advanced mode (additional screens with advanced settings) and Basic mode of display. Advanced mode includes Serial, Infrared, and View Resources tabs.



For more information about each option, click Help on the Sony Notebook Setup screen to display the Help file.

Controlling Power Management

The PowerPanel utility allows you to control the power management of your notebook and provides key information about system activity. The following sections briefly describe how to conserve your computer's battery power. You can also refer to the PowerPanel Help for more detailed information. To activate a profile or command, see “Displaying Battery Information” on page 7.

Viewing the PowerPanel icon

The PowerPanel icon (displayed in the task tray) indicates the level of performance of the CPU. The tooltip will display information about the active profile.

To activate PowerPanel

- 1 Right-click the taskbar at the bottom of the screen.
- 2 Select Toolbars from the pop-up menu, and then click PowerPanel. The PowerPanel toolbar appears on the taskbar.



The current profile icon appears on the PowerPanel toolbar. It is the icon farthest to the left, and its appearance changes depending on which power management profile is currently selected. To change the power management profile, click the current profile icon, and then select a profile from the list. See “Power Management Profiles” on page 4 for a description of available options. To select another power profile command, click that option in the PowerPanel toolbar.

 Refer to PowerPanel Help for information on customizing the PowerPanel toolbars.

When you use the battery pack to power your computer, your system selects the Maximum Battery Life power management profile by default. If you select a different power management profile while using battery power, that profile is selected automatically the next time you use the battery pack to power your computer.




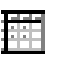
To customize power management settings

You can customize power management settings, such as the system timer and the brightness of the screen, to your individual tastes. To customize a setting:

- 1 Click the Current Profile icon on the PowerPanel toolbar.
- 2 Select Edit/Create Profiles from the menu.
- 3 Click a profile whose setting you want to change from the list in the left panel.
- 4 Double-click an item whose setting you want to change from the list in the right panel.
- 5 Click the desired setting.
- 6 Click the File menu, and then click Save.
- 7 Click the File menu, then click Exit.

Power Management Profiles

PowerPanel provides several predefined power management profiles. Each profile consists of a group of specific power management settings that are designed to meet specific power management goals — ranging from maximum power management to no power management. You can change the settings for any of the predefined profiles or you can create your own profile to suit your portable computing needs. The predefined profiles are:

<i>Icon</i>	<i>Description</i>
	Maximum Battery Life – Provides power saving features to give you maximum battery life and good performance. It slows the computer and puts it into System Suspend mode after a specified period of inactivity.
	Maximum Performance – Provides the best system performance while still conserving power.
	Word Processing – Optimizes power management with longer timeouts on the hard disk and display screen. You can also establish settings for LCD (Video) Standby and System Suspend to optimize power management for your system.
	Spreadsheet – Optimizes performance and power requirements for spreadsheet applications.



Presentation – Keeps the display on at all times while it conserves power. This option is ideal for slide show presentations. You can establish settings for LCD (Video) Standby, Hard Disk Sleep, and System Suspend to optimize power management for your system.



Communications – Extends battery life by initiating a quick display timeout. The Internal modem remains powered. You can also establish settings for LCD (Video) Standby and System Suspend to optimize power management for your system.



Games – Disables the display and the Hard Disk Spindle Down timer.



Camera – Optimizes performance and power requirements for camera usage.



AC Power – The power management state when AC power is in use. Similar to the Power Management Off setting. PowerPanel automatically loads the AC profile unless you disable this feature.



Power Management Off – Turns off all power management features such as System Suspend and System Hibernation modes.





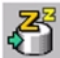

DVD – Optimizes performance and power requirements for DVD usage.



Automatic Profile Selection – Automatically switches to a profile suitable for active applications.

Power Management Commands

PowerPanel also provides power management commands that you can use to activate specific power management functions and to control power for a specific device. You might use these commands when you want to override a profile setting or initiate an immediate action, such as putting the system into Video Standby mode before the Video Standby timer expires.

Icon	Description
	System Idle – Puts the system into System Idle mode, a state of low power consumption. This state stops the CPU clock and puts all peripherals into low power mode. To return the system to the active state, press any key or power switch on your system.
	System Suspend – Puts the system into System Suspend mode, a power management state that saves the state of the system and peripheral devices in memory (RAM). Power consumption reduces to a minimum, and the system remains on. To return the system to the active state, press any key or the power switch on your computer.
	System Hibernation – Provides for the lowest level of power consumption. The system writes the state of the system and peripheral devices to the hard disk and turns off the system power. To return the system to the original state, use the power switch to turn on power. The system saves the data in the Save to Disk Partition on the hard drive.
	LCD (Video) Standby – Turns off the LCD to save power. If you turn off the Video Standby timer in the AC Power-Profile Editor, the display remains active except when the system enters System Suspend mode. The video display system is one of the largest consumers of power in the system.

Conserving Battery Power

When using the notebook with a battery, the LCD display and the hard drive can be set to switch off automatically to conserve battery power.

For details, see “Power Management Profiles” on page 4.

Displaying Battery Information

You can display detailed information about the battery in your computer. The following sections briefly describe how to display your computer's general battery information. You can also refer to BatteryScope Help for more detailed information.

To Activate BatteryScope





- 1 Right-click the taskbar at the bottom of the screen.
- 2 Select **Toolbar** from the pop-up menu, and then click **BatteryScope**. The BatteryScope appears on the taskbar.

You can also view the total capacity remaining in the battery by placing the pointer over the battery icon in the task tray on the lower right side of the screen.



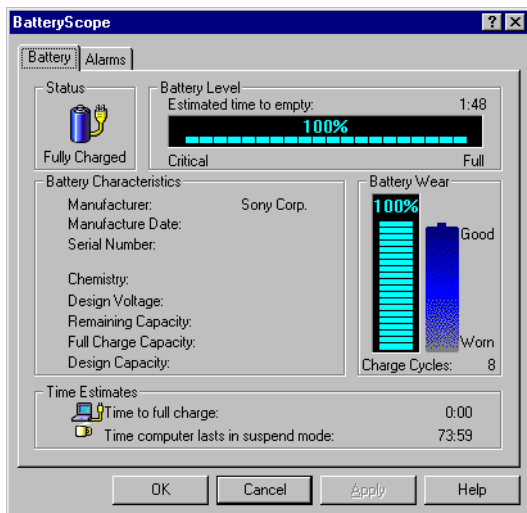
- ❑ **Percentage indicator**
Displays the percentage of the remaining capacity.
- ❑ **Time indicator**
Displays estimated time (hours/minutes) remaining before the battery fully drains; also referred to as the time-to-empty.

Battery Icon Descriptions

Battery icon	Battery status
	Charging
	Fully Charged
	Discharging
	No battery

Displaying Detailed Battery Information

Double-click the battery icon in the system tray to display the BatteryScope window. The screen appears displaying the Battery tab, which contains information such as the estimated time to empty and the charging time.



To customize the BatteryScope toolbar and alarm system

You can customize the BatteryScope toolbar to suit your portable computing needs, including modifications to the alarm settings. Refer to BatteryScope Help for more information.

Changing the Window Design of Sony Software

To change the window design of Sony software

- 1 Click the Start button, point to Settings, and then click Control Panel.
- 2 Click UI Design Selector.
- 3 Click << or >> and select the desired design.
- 4 Click Apply. The “UI Design Selector” window design changes.

The window design for your Sony software will match the UI Design Selector window when you click OK.

To try another selection, click << or >> and then, click OK.

The UI Design Selector closes and the new window design of your Sony software displays.

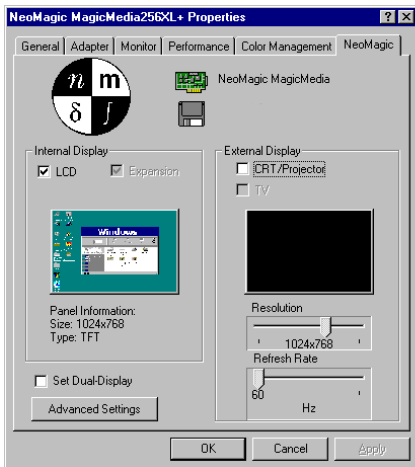


Note: This feature is available with UI Design Selector-compatible software only.

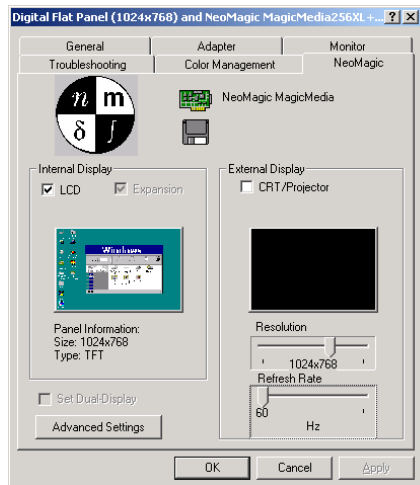
Selecting the Display Mode

This notebook uses the NeoMagic® video controller. You can select which display is used when the computer is connected to an external display.

- 1 Click the Start button on the Windows taskbar.
- 2 Point to Settings and click Control Panel.
- 3 Click the Display icon.
- 4 Click the Settings tab, and then click the Advanced button. In Windows 98, the NeoMagic MagicMedia 256XL+ Properties window displays. In Windows 2000, the Digital Flat Panel (1024x768) and NeoMagic MagicMedia 256XL+... window displays.
- 5 Click the NeoMagic tab.




(Windows® 98 only)



(Windows® 2000 only)

- 6 Select the type of display.

<i>Display mode</i>	<i>Function</i>
Internal Display (LCD)	Activates your computer's LCD.
External Display (CRT/Projector)	Activates an external computer display or an RGB projector connected to the Monitor port on your computer.


 You can turn off the computer's LCD display by removing the checkmark from the LCD option under Internal Display.

If you turn off the LCD when you select a display, the Projector option will no longer be available.

If you select CRT/Projector and turn off the LCD, you can use the Refresh Rate slider to change the display's horizontal frequency. This setting can be made only for CRT display.

If you select Independent Display Timing (see page 12), you can change both the resolution and the refresh rate.

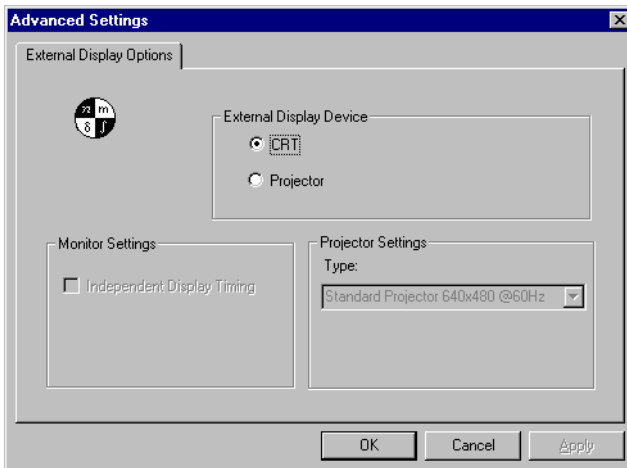
7 Click OK. The Display Properties window appears and the display mode you selected is now available.

 Some displays do not support using both the computer's LCD and an external display simultaneously.

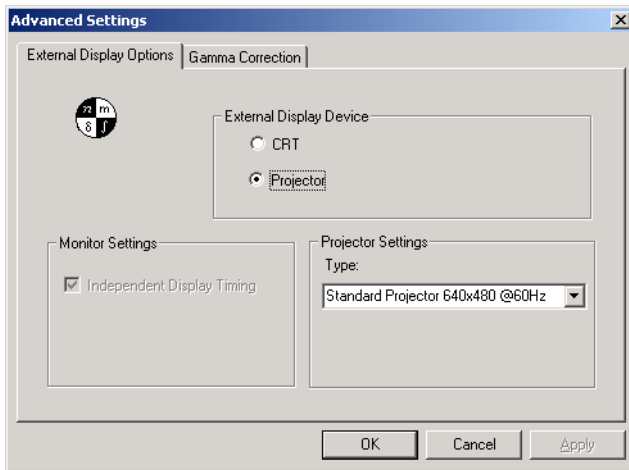
Using a CRT or Projector

When you select CRT/Projector as the display mode, you can choose additional settings as follows:

1 After selecting CRT/Projector as the type of external display (step 6 of Selecting the Display Mode), click Advanced Settings.



(Windows® 98 only)



(Windows® 2000 only)

2 Select the following options:

External Display Device

	<i>Function</i>
CRT	Enables the external computer display option.
Projector	Enables the projector option.

Monitor Settings

Independent Display Timing	Click to place a checkmark when you want to set the resolution and refresh rate differently from the computer's LCD. To change the resolution and refresh rate, see step 6 of Selecting the Display Mode.
----------------------------	---

Projector Settings

Type	Select the projector's resolution from the drop-down box.
------	---

3 Click OK.



You cannot select Independent Display Timing when the display is set to True Color (24 bit).

Customizing for external display/projector use

If you selected CRT/Projector in step 6 of Selecting the Display Mode, you can set the resolution and so forth as appropriate for the type of external computer display or projector.

- 1 Click Details in step 6 of Selecting the Display Mode on the previous page. Advanced Settings appears.
- 2 Select the display type.

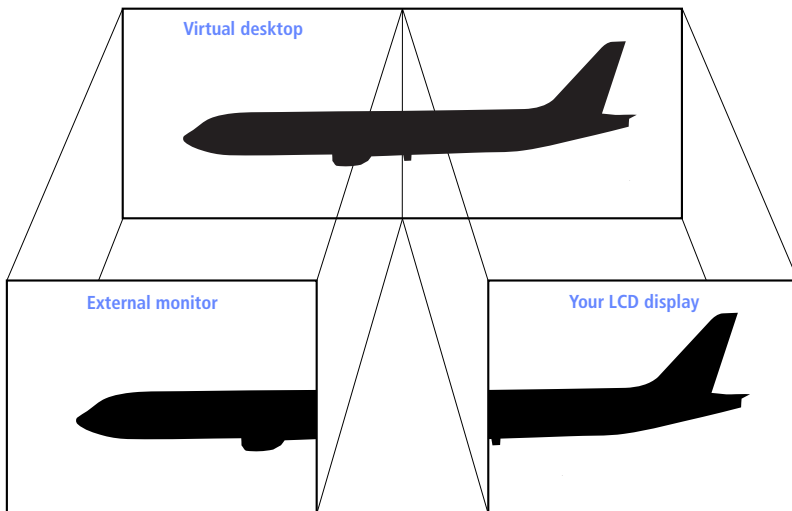
<i>Setting</i>	<i>Function</i>
CRT	Connection to an external computer display.
Projector	Connection to a projector.

- 1 Set the refresh rate/resolution (for Independent display/Timing). When Independent display/Timing is selected in Monitor settings, you can set separate values for the refresh rate and resolution of the internal and external displays.
 - 2 Set the resolution. Select the resolution for the projector that you are going to use.
- 3 Click OK

! Important! It is not possible to select Independent display/Timing when True Color (24 bit) is selected for the number of colors.

Using the Dual Display Function

The dual display function allows you to distribute portions of your desktop across separate displays. For example, if you have an external monitor attached to the monitor connector, your LCD display and the monitor can function as a single desktop. You can move the cursor off one display and onto the other. This allows you to drag objects, such as an open application window or a toolbar, from one display to the other. This configuration of a single desktop distributed across separate displays is referred to as a virtual desktop.



Selecting Dual Display mode

You must restart Windows to use dual display mode. Save your work and close any open applications before changing to dual display mode, then follow these steps:

- 1 Click the Start button on the Windows taskbar.
- 2 Point to Settings and then click Control Panel.
- 3 Click the Display icon.
- 4 Click the Settings tab.

- 5 Click the Advanced button.
- 6 Click the NeoMagic tab.
- 7 Check the Set Dual-Display option and click OK. The System Settings Change dialog box appears.
- 8 Click Yes to restart your system.

Setting the colors and resolution for each display

You can set the display colors and resolution for each display that is part of a virtual desktop.

Follow steps 1 to 4 above to display the Display Properties screen. Select the display you wish to change (1 or 2) by clicking on the icon of the display. You can change colors by selecting an option from the Colors list. Use the slider in the Screen area to change the resolution. Click OK or Apply. Click OK to confirm that you want to make the changes.

Customizing the virtual desktop

You can customize dual display mode by changing the position of the two desktops that comprise the virtual desktop.

In the Display Properties screen, drag the icons of display 1 or display 2, moving them to a new position relative to each other. The two display icons must be connected to create a virtual desktop. Click OK to apply the change.

Releasing the dual display setting

You must restart Windows to return to single display mode. Save your work and close any open applications before returning to single display mode. Follow the steps in the section above on Selecting dual display mode. In step 7, remove the check from the Set Dual-Display option. You must restart Windows before the change takes effect.

