

For the customers using the computer with the Sony original software “PictureGear Studio” installed

PictureGear Studio © 2002 Sony Corporation

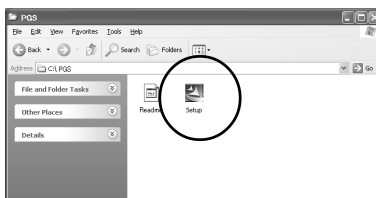
The “PictureGear Studio” is a Sony’s original software application that allows you to do the series of procedures for handling a still image—capturing, managing, processing, and outputting.

About paper templates for the PictureGear Studio

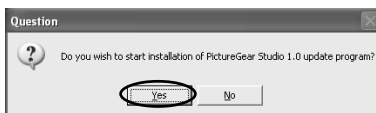
By installing the paper templates for the PictureGear Studio into your computer, you can use the software to print a still image onto the Post card size (SVM-25LS/SVM-25LW), 3.5 x 5 inch size (SVM-30MS), and the Small size (SVM-30SS/SVM-30SW) print paper.

Installing the template for the PictureGear Studio

- 1 Double-click “Setup”.
The PictureGear Studio update program starts up.



- 2 Click “Yes”.
Installation starts.



- 3 Click “OK”.

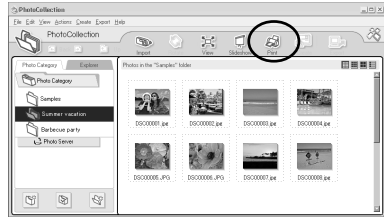


Printing photos from the PictureGear Studio

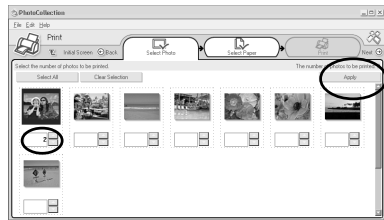
- 1 Start the PictureGear Studio and click "PhotoCollection". The "PhotoCollection" window is displayed.



- 2 Click the desired photo category folder and the "Print" button.

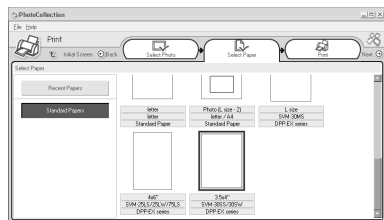


- 3 Select the photos that you want to print, set the number of copies to be printed for each photo, and then click "Apply".



- 4 In the "Standard Papers", select the desired paper size. Select either of the following sizes:

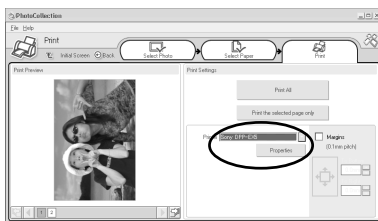
- L size
SVM-30MS
DPP-EX series
- 4 x 6"
SVM-25LS/24LW/75LS
DPP-EX series
- 3.5 x 4"
SVM-30SS/30SW
DPP-EX series



- 5** In the “Printer” drop-down list box, select “DPP-EX5” or “DPP-EX7” and then click “Properties”.

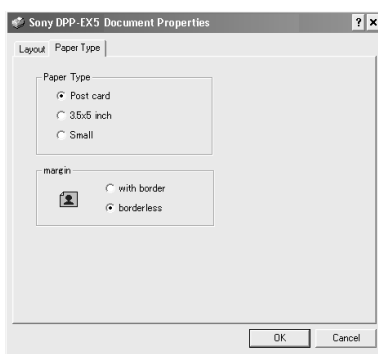
In the “Printer” drop-down list box, select the printer that you actually use.

When you click “Properties”, the document properties dialog box for the selected printer is displayed.



- 6** In the “Paper Type” tab, click the desired paper type and margin.

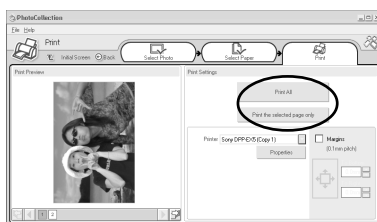
- Paper Type: Select the print paper size you actually use for printing from “Post card”, “3.5x5 inch”, or “Small” size.
- margin: When you select “Post card” or “3.5 x 5 inch” paper type, select “with border” or “borderless”. (When you select “Small” paper type, you cannot set the margin.)



Notes

- Make sure to specify the paper type.
- The orientation of the image will be automatically set to horizontal without regard to your settings.

- 7** Click “OK”.
- 8** Click “Print All” or “Print the selected page only”.



Continued

- 9** Make sure that the specified print paper is set and click "OK".

Printing starts.

