

SONY®

***Internet Electronic
Program Guide
Service***

PCV-RX490TV

NOTICE

© 2001 Sony Electronics Inc. Reproduction in whole or in part without written permission is prohibited. All rights reserved. This manual and the software described herein, in whole or in part, may not be reproduced, translated, or reduced to any machine-readable form without prior written approval.

SONY CANNOT WARRANT THAT THE FUNCTIONS DESCRIBED IN THIS SUPPLEMENT WILL BE UNINTERRUPTED OR ERROR-FREE. SONY ALSO ASSUMES NO RESPONSIBILITY, AND SHALL NOT BE LIABLE FOR ANY DAMAGES TO, OR VIRUSES THAT MAY INFECT, YOUR COMPUTER EQUIPMENT, OR OTHER PROPERTY ON ACCOUNT OF YOUR ACCESS TO, USE OF, OR BROWSING IN THE DESCRIBED WEB SITE, OR YOUR DOWNLOADING OF ANY MATERIALS, DATA, TEXT, IMAGES, VIDEO OR AUDIO FROM THE DESCRIBED WEB SITE. WEB SITE INFORMATION IS OBTAINED FROM VARIOUS SOURCES AND MAY BE INACCURATE. COPIES OF COPYRIGHTED INFORMATION MAY ONLY BE MADE FOR LEGALLY PERMISSIBLE PURPOSES.

Sony, VAIO, Digital Studio, and Giga Pocket are trademarks or registered trademarks of Sony. Microsoft and Windows are trademarks or registered trademarks of Microsoft Corporation. All other trademarks are trademarks or registered trademarks of their respective owners.

Internet Electronic Program Guide Service

Internet Electronic Program Guide is a free, online service that enables quick and easy access to your local TV listings. You can use the Internet Electronic Program Guide service with your Giga Pocket™ Personal Video Recorder for a “one-click” set up of timer recordings and record your favorite TV programs. Giga Pocket Personal Video Recorder must be set up and configured correctly before you can use the Internet Electronic Program Guide service. For information on how to set up and use the Giga Pocket Personal Video Recorder with your television and other equipment, see the “VAIO Digital Studio™ Computer User Guide” and the “VAIO Digital Studio™ Computer QuickStart.”*


 You must read and accept the User Agreement before accessing the Internet Electronic Program Guide Web site (first time only).

The Internet Electronic Program Guide service is only available to users in the United States.

* Unauthorized duplication of audio or video files is a violation of applicable laws.

To set up your Internet Electronic Program Guide service

You must be connected to the Internet, using Microsoft® Internet Explorer, before setting up your Internet Electronic Program Guide.

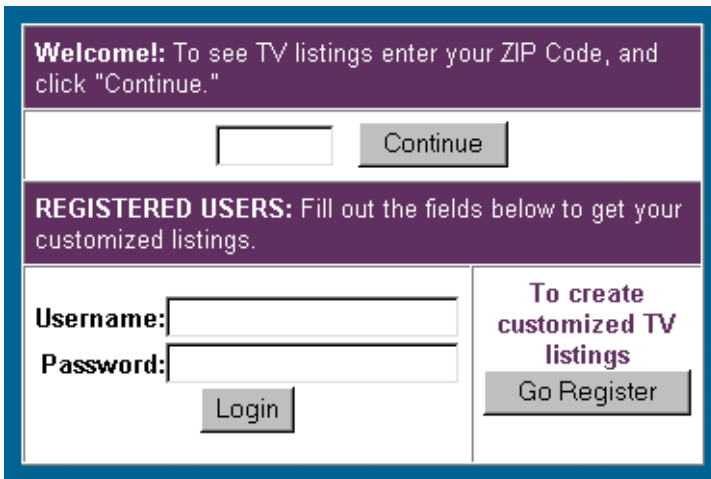
 Please use Microsoft® Internet Explorer as your Web browser for the Internet Electronic Program Guide service.

To set up Internet Electronic Program Guide service, follow these steps:

- 1 Click Start in the Windows® taskbar, point to Programs, and then select Giga Pocket.
- 2 Click TV Program Web site. Internet Explorer launches, and you are directed to the Internet Electronic Program Guide Web site.

The Welcome and Registration Window appears.

Internet Electronic Program Guide Welcome and Registration window



Welcome!: To see TV listings enter your ZIP Code, and click "Continue."

REGISTERED USERS: Fill out the fields below to get your customized listings.


Username:

Password:

To create customized TV listings


- 3 In the Welcome! section, enter your 5-digit zip code and click Continue. The Choose Your Provider window appears, listing all TV providers or TV services available in your area.

- 4 Select your TV provider and then click Confirm Channel Lineup. The Confirm Lineup window appears, listing available channels by number and name.
- 5 Click Yes if the channel lineup is correct. Otherwise, click No and repeat steps 3 and 4 until you locate the correct channel lineup.
- 6 Your TV listings appear in table format, organized by time and channel. Click Download All Channel Settings to set your channels. The Channel Information Converter window appears if this is the first time you have used this download feature. Click OK.

 Close all Giga Pocket applications before downloading your TV listings.

If you are using set-top box (STB) mode, you do not need to click Download All Channel Settings.

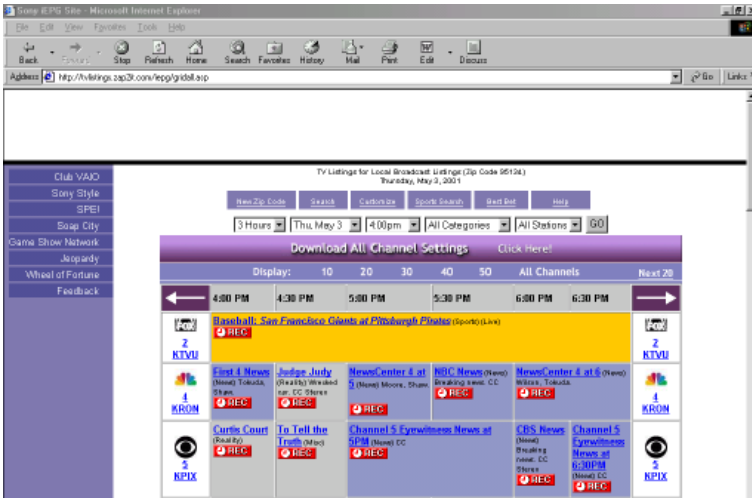
- 7 Verify the channel settings and click OK.
- 8 Your personal channel settings appear whenever you access the Internet Electronic Program Guide Web site.


 If your TV provider adds new channels or changes existing channels, an Update icon appears next to Download All Channel Settings. Click Update to add the new or updated channels to your personal channel setting.


Setting up a timer recording


- 1 Open Internet Explorer and go to the Internet Electronic Program Guide web site. Your online channel guide will appear.


Online channel guide main window



 The appearance of the online channel guide Web site, its contents, and the accuracy of the TV listings is controlled by the TV listing provider and may change without notice. Pay-per-view channels cannot be accessed without making payment to the appropriate TV program provider.

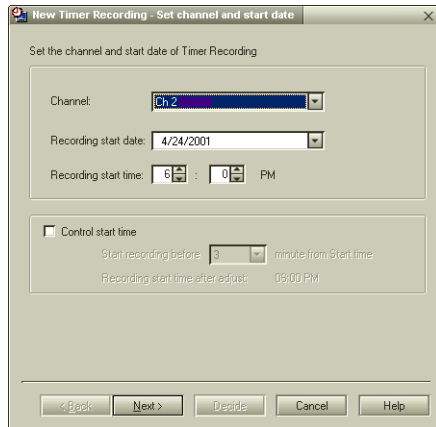
- 2 From the online channel guide, click on the REC icon  to select the program you wish to record. The Timer Recording Wizard begins and the New Timer Recording - Set channel and start date window appears.

 Timer recordings create virtual containers for the recorded content that are called Video Capsules.

 You can schedule up to 100 timer recordings using Giga Pocket Personal Video Recorder. See the Giga Pocket Help for more information. To access the Help, follow these steps:

1. Click Start in the Windows taskbar and then select Programs.
2. Select Giga Pocket and then click on Giga Pocket Help.

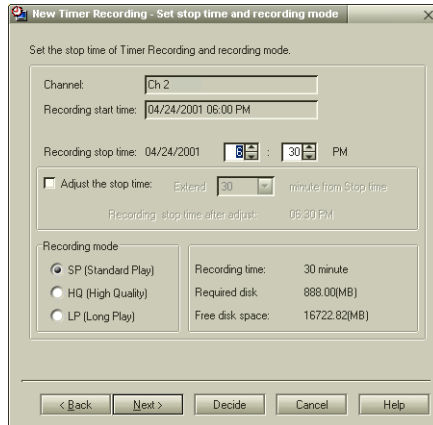
New Timer Recording - Set channel and start date window



- 3 Verify that the information is correct and click Next. The programming station and time information is automatically programmed into the appropriate Timer Recording Wizard fields.
- 4 You can set the stop time for your timer recording and select the recording mode. The stop time is automatically programmed into the Timer Recording Wizard. Verify the stop time, choose a recording mode, and then click Next.

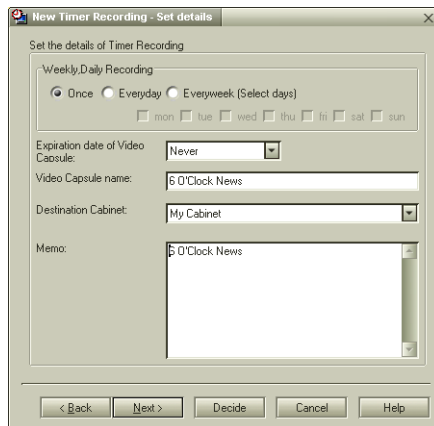
<i>Recording Mode</i>	<i>Description</i>
Standard Play (SP)	Standard Recording mode.
High Quality (HQ)	Image quality is improved, but recording requires more space on the hard disk drive as compared to using SP or LP recording modes.
Long Play (LP)	Image quality is reduced, but recording requires less space on the hard disk drive as compared to using HQ recording mode.

New Timer Recording - Set stop time and recording mode window




- From the New Timer Recording - Set details window, you can customize the timer recording schedule. Select how often you want to record the program.

New Timer Recording - Set details window

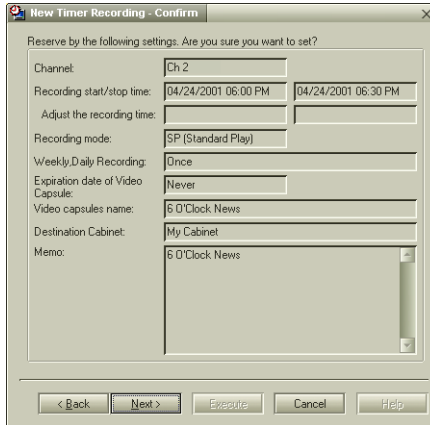


- Select a date for the recorded program to be automatically deleted from your hard disk drive, using the Expiration date of Video Capsule drop-down list.

 To maintain adequate space on your hard disk drive, Giga Pocket Personal Video Recorder enables you to set an expiration date for your Video Capsules to be automatically deleted.

- Click Decide to review your setting preferences. The New Timer Recording - Confirm window appears. Click Next.

New Timer Recording - Confirm window




- The New Timer Recording - Completed window appears. Click Finish.


New Timer Recording - Completed window




Viewing Your Selected Program Recording Schedule

You can easily view the programs you have selected to record, using Giga Pocket Personal Video Recorder. The Timer Recording Manager feature enables you to change or cancel your timer recording at any time. To view your scheduled timer recordings, follow these steps:

- 1 Double-click on the Timer Recording Manager icon  located in the Windows task tray.
Review your scheduled timer recordings and make any desired changes or cancellations.
- 2 Click Hide to return the icon to the task tray.

 You do not have to be connected to the Internet to use the Timer Recording Manager feature.

Additional Information about Timer Recording Manager

The Timer Recording Manager keeps track of all scheduled TV recordings. Your computer settings, by default, are set to start Timer Recording Manager automatically when the computer is turned on. Timer recordings are executed when the Timer Recording Manager icon  is visible in the Windows task tray. When creating a timer recording, it is important to remember the following information:

- The timer recording is disabled if you turn your computer off.
- Your computer should be in Stand by or Hibernate mode, if the system is not in use.
- You must disable screensavers and any other applications that may access your computer's hard disk drive during the timer recording.
- If you are using a set-top box (STB), make sure it is turned on and set to the channel you want to record.

