

# Wireless Broadband Router

## Troubleshooting Guide

This document provides solutions to common problems encountered with the Wireless Broadband Router.

Please refer to this guide before contacting Sony Customer Information Services.

The PCWA-AR300 consists of:

- Broadband Router Unit PCWA-R1
- Wireless LAN Access Point PCWA-A320

In this document, we refer to the Broadband Router Unit as the Router Unit and to the Wireless LAN Access Point as the Wireless Unit.



PCWA-AR300

Sony Corporation ©2003 Printed in Japan

### Contents

#### Preparations

- No communication between the computer and Wireless Broadband Router ..... **Case 1**

#### Connections

- Cannot display the Setup Page (error message appears) ..... **Case 1**

#### Router Functions

- The Internet Gateway is shown as a network connection. What does this mean? ..... **Case 1**
- Cannot connect to the Internet ..... **Case 2**
- I changed the LAN settings of the Router Unit, but I can no longer connect to the Router Unit or network ..... **Case 3**

#### Access Point Functions

- Clicked the "Refresh" button under "Access Point List", but nothing appears in the list ..... **Case 1**
- Several Access Points are listed, but I do not know which one to select .... **Case 2**
- Unable to connect after Access Point functions settings are made ..... **Case 3**
- If "Easy Setup" is used after "Advanced Setup", what about items not included in "Easy Setup"? ..... **Case 4**

#### Miscellaneous

- Forgot settings ..... **Case 1**
- The power cord is plugged to the AC outlet, but the indicators do not light ..... **Case 2**
- After pressing the Quick Setup switch, the Status indicator starts flashing red ..... **Case 3**

• Sony, VAIO, CarrierGate, and the Eco Info logo are trademarks of Sony Corporation.  
 • Microsoft and Windows are registered trademarks of Microsoft Corporation in the United States and/or other countries.  
 • In this manual, Microsoft® Windows® Millennium Edition is referred to as Windows Me, Microsoft® Windows® 2000 Professional is referred to as Windows 2000, Microsoft® Windows® XP Home Edition and Microsoft® Windows® XP Professional are referred to as Windows XP.  
 • Netscape is a registered trademark of Netscape Communications Corporation.  
 • All other names of systems, products and services are trademarks of their respective owners. In the manual, the ™ or © marks are not specified.

## Preparations

### Case 1 No communication between the computer and Wireless Broadband Router

#### ① Was your computer properly configured for wireless communication?

When using the Access Point functions under factory default settings, configure the computer as follows.

The factory default settings of the Access Point function are:

- Network Name (SSID):  
The 6-character identifier printed on the label inside the rear cover of the Wireless Unit
- Encryption (WEP):  
Disabled

With the Windows Me and Windows 2000 operating systems, perform setup as described in the documentation of the Wireless LAN PC Card.

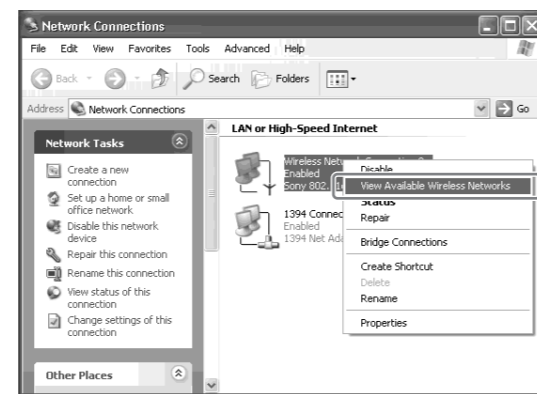
With the Windows XP operating system, proceed as follows.

- 1 Click "Start", and then click "Control Panel".
- 2 In "Control Panel", double-click "Network Connections".

#### Note

If "Network Connections" does not appear, click "Switch to Classic View".

- 3 In the "Network Connections" window, right-click the icon of the wireless network to which you want to connect, and click "View Available Wireless Networks".



- 4 In the "Connect to Wireless Network" dialog box, select the Access Point from "Available Wireless Networks", and click "Connect". (When using the Access Point functions under factory default settings, check the 6-character identifier printed on the label inside the rear cover of the Wireless Unit.)

#### ② Are the Network Name (SSID) and Data Encryption (WEP) settings configured correctly?

To connect to the Access Point, the Network Name (SSID) and Data Encryption (WEP) settings must be the same at the computer and the Access Point.

#### Hint

When using the Access Point functions under factory default settings, use the settings listed in ① above.

With the Windows Me and Windows 2000 operating systems, verify the Access Point Network Name (SSID) and Data Encryption (WEP) settings of the Wireless LAN PC Card as described in its documentation.

With the Windows XP operating system, proceed as follows to verify the settings.

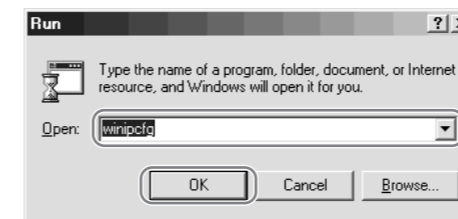
- 1 Open the "Connect to Wireless Network" dialog box as described in ① above.
- 2 Select the Network Name (SSID) of the Access Point from "Available Wireless Networks".
- 3 If data encryption is enabled for the Access Point, enter the correct Encryption Key (Network Key) in the "Data Encryption (WEP)" field.
- 4 Click "Connect".  
If the connection is not established, reset the Access Point functions to the factory default settings as described in "Miscellaneous", "Case 1: Forgot settings", and then set up the Access Point functions again as described in the separate Quick Start Guide.

#### ③ Can the IP address of the computer be acquired?

With the computer setting "Obtain IP address automatically" enabled, perform the following steps. For information on how to set the IP address of the computer, see Windows Help.

#### Windows Me operating system

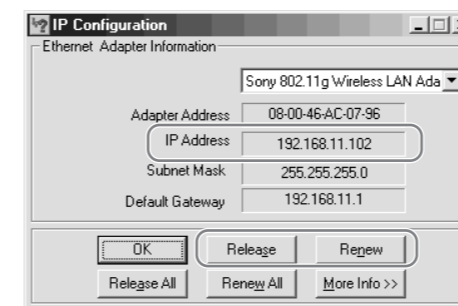
- 1 Click "Start", and click "Run".
- 2 In the dialog box used to specify the file name, enter "winipcfg" (exclude the quotation marks) and click "OK".



- 3 From the list in the "IP Setup" dialog box, select the Wireless LAN interface that you are using (PC card, computer internal wireless LAN, etc.).

- 4 Make sure that an IP address is shown in the "IP address" field.

- 5 If the IP address is "0.0.0.0" or an address starting with "169.254." is displayed, click "Release", and then "Renew".

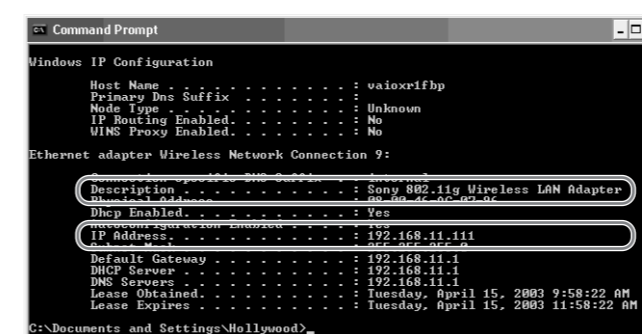


#### Note

If an IP address starting with "169.254." is displayed, a suitable IP address was not obtained with "Obtain IP address automatically" and your Windows operating system assigned an address to the Wireless LAN PC Card or Wireless LAN Converter. In this condition, correct network connection is not possible. Perform the setup again as described in the separate Quick Start Guide.

#### Windows 2000 and Windows XP operating systems

- 1 Click "Start", point to "Programs" ("All Programs" when using the Windows XP operating system) and then "Accessories", and click "Command Prompt".
- 2 In the command prompt window, enter "ipconfig /all" (exclude the quotation marks) and press the Enter key.
- 3 Verify the IP address setting information of the Wireless LAN interface that you are using (PC card, computer internal wireless LAN, etc.).



#### Hint

The "Description" field shows the name of the Wireless LAN interface.

- 4 If the IP address is "0.0.0.0" or an address starting with "169.254." is displayed, enter "ipconfig /renew" (exclude the quotation marks) and press the Enter key. A new IP address is assigned.

#### Note

If an IP address starting with "169.254." is displayed, a suitable IP address was not obtained with "Obtain IP address automatically" and your Windows operating system assigned an address to the Wireless LAN PC Card or Wireless LAN Converter. In this condition, correct network connection is not possible. Perform the setup again as described in the separate Quick Start Guide.

## Connections

### Case 1 Cannot display the Setup Page (error message appears)

If entering "http://192.168.11.1" in the address field of the Web browser does not open the Setup Page, check the following.

#### ① Can the IP address of the computer be acquired?

See "Preparations", "Case 1: No communication between the computer and Wireless Broadband Router", item ③.

#### ② Are the Access Point and Router Unit power connections correct?

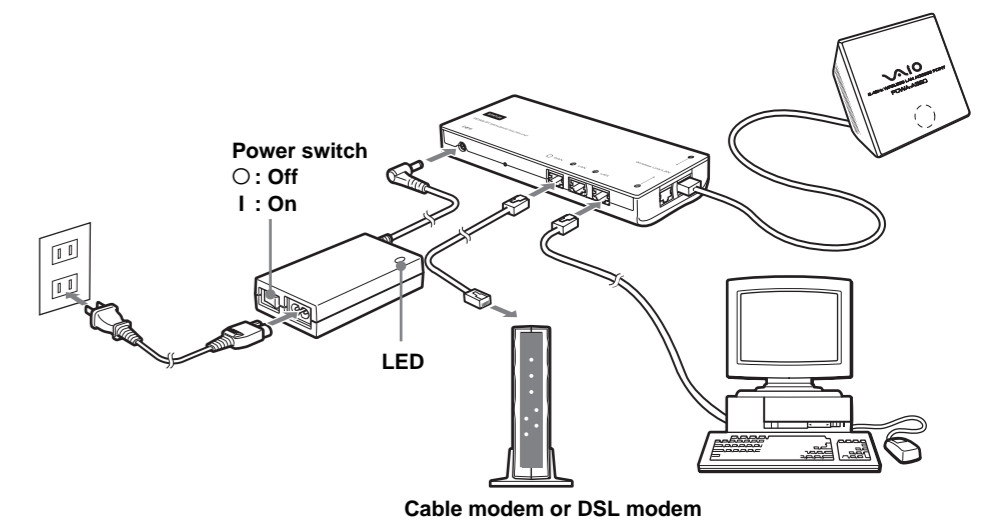
When powered properly, the Status indicator of the Router Unit is lit and the Status indicator of the Access Point is flashing slowly.

#### ③ Is the AC adapter power switch on?

Make sure that the AC adapter is properly connected and verify that the power switch is on.

#### Hint

When the AC adapter power switch is on, the LED on the adapter is lit.



#### ④ Is the Ethernet cable correctly connected?

Make sure that an end of the Ethernet cable is connected to a LAN connector of the Router Unit. Connect the other end of the Ethernet cable to your computer.

#### Hint

The Ethernet port of your computer is on its back panel.

#### ⑤ Is the Windows XP "Internet Connection Firewall" function enabled?

If the "Internet Connection Firewall" function is enabled, communication may not be possible. Follow the procedure below to check or change the settings.

- 1 Click "Start", and then click "Control Panel".
- 2 In "Control Panel", double-click "Network Connections".

#### Note

If "Network Connections" does not appear, click "Switch to Classic View".

- 3 In the "Network Connections" window, right-click the icon of the wireless network that you want to use, and click "Properties".
- 4 Click the "Advanced" tab and (if selected) clear the "Protect my computer and network by limiting or preventing access to this computer from the Internet" check box.
- 5 Click "OK".

#### Hint

Refer to Windows XP Help for details about the "Internet Connection Firewall" function.

#### Note

Make sure that you take appropriate security measures when the "Internet Connection Firewall" function is disabled. Except when configuring the Access Point, it is strongly recommended that you enable the "Internet Connection Firewall" function at all times.

## ⑥ Is the Web browser of the computer used for the Wireless Broadband Router setup configured to use a proxy server?

Make sure that no proxy setting is enabled for the IP address of the Wireless Broadband Router.

### Note

While the proxy server setting is disabled, it may not be possible to display other pages except for the Wireless Broadband Router Setup Page.

#### Example 1: Using Microsoft® Internet Explorer

1 On the "Tools" menu, click "Internet Options".  
The "Internet Options" dialog box appears.

2 On the "Connection" tab, click "LAN Settings".  
The "Local Area Network (LAN) Settings" dialog box appears.

### Hint

If there are dial-up profiles in the "Dial-up" box, make sure that you select the "Never dial a connection" check box.

3 If "Use a proxy server for your LAN (These settings do not apply to dial-up or VPN connections)" check box is selected, clear the check box and click "OK".

4 When the Wireless Broadband Router setup is complete, return the proxy setting to its original condition.

#### Example 2: Using Netscape

1 Start the Web browser on the computer used for the Wireless Broadband Router setup.

2 On the "Edit" menu, click "Setup".

3 In "Category", click "Advanced" and click the "Proxy" button.

4 Select "Connect directly to the Internet" and click "OK".

5 When the Wireless Broadband Router setup is complete, return the proxy setting to its original condition.

## Access Point Functions

### Case 1 Clicked the "Refresh" button under "Access Point List", but nothing appears in the list

#### ① Did you wait long enough?

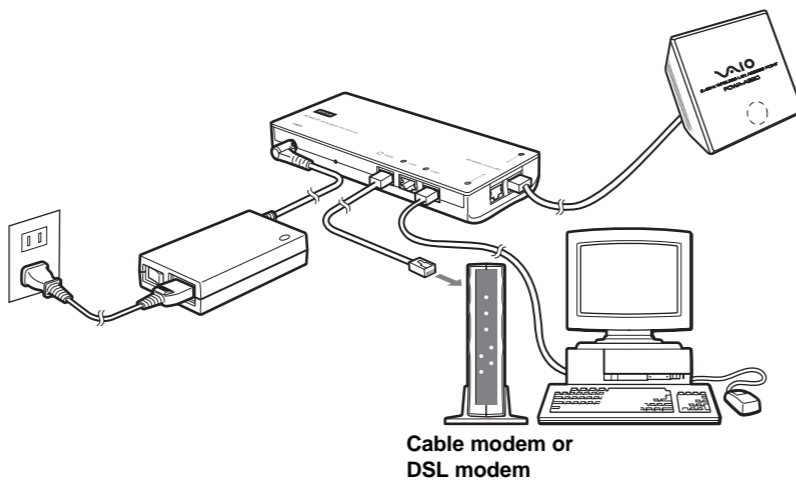
The scanning process may take some time. After clicking "Refresh", wait at least 30 seconds before checking the results.

#### ② Can the IP address of the computer be acquired?

See "Preparations", "Case 1: No communication between the computer and Wireless Broadband Router", item ③.

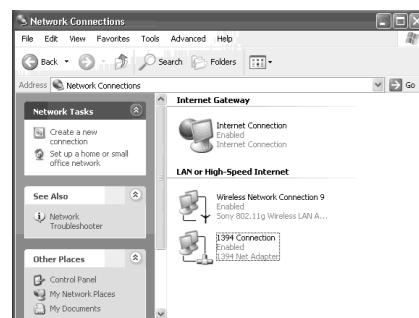
#### ③ Is the Access Point connected correctly to the Router Unit?

Make sure that connections are as shown.



## Router Functions

### Case 1 The Internet Gateway is shown as a network connection. What does this mean?



It means that the Router Unit is recognized as the Internet Gateway. If you disconnect the Router Unit from the network, the indication disappears.

### Case 2 Cannot connect to the Internet

#### Are the WAN settings correct?

Configure the Router Unit correctly according to the instructions in the Quick Start Guide.

### Case 3 I changed the LAN settings of the Router Unit, but I can no longer connect to the Router Unit or network

See "Case 1: No communication between the computer and Wireless Broadband Router", ③ to release and renew the IP address of your computer so that it matches the LAN settings of the Router Unit. Alternately, you can restart the Router Unit, which automatically releases and renews the IP address of your computer.

### Note

In "Case 1: No communication between the computer and Wireless Broadband Router", ③, we recommend that you release and renew the IP address only when it is "0.0.0.0" or it starts with "169.254". In the case above, you must release and renew the IP address, regardless of the displayed address.

### Case 3 Unable to connect after Access Point functions settings are made

#### Did you change the wireless connection settings of the computer to match the Access Point functions settings?

If the Network Name (SSID) and Data Encryption (WEP) settings of the Access Point are changed, the wireless connection settings of the computer must be changed accordingly. For information on how to do this, refer to the documentation of the Wireless LAN PC Card or the Wireless LAN Converter.

### Case 4 If "Easy Setup" is used after "Advanced Setup", what about items not included in "Easy Setup"?

If you reconfigure the unit with "Easy Setup" after using "Advanced Setup", the items not included in "Easy Setup" are set as follows.

Item	Setting
Frequency (Channel)	Auto Select
Broadcast Network Name (SSID)	Yes
IEEE 802.11 Mode	11g, 11b
Access Control	Accept all
Connection Method	Obtain IP address automatically (DHCP)
DNS Server	-
Speed	Auto-Detect
Setup Switch	Enable
Time Server (NTP Server)	-

### Note

In the table above, "-" indicate blank settings.

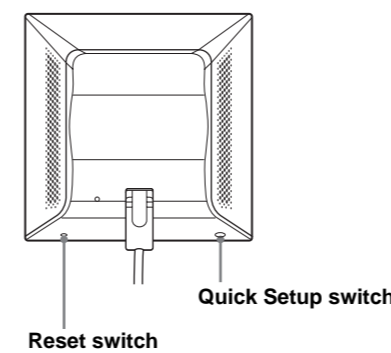
## Miscellaneous

### Case 1 Forgot settings

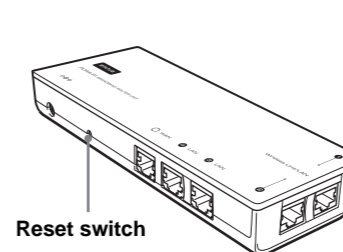
Reset the Access Point and/or Router Unit, as described below.

To perform a reset, the Wireless Broadband Router must be on. It is possible to reset both units or only the unit for which you have forgotten the settings. When you forget the Access Point settings, press the Reset switch on the Wireless Unit. When you forget the Router Unit settings, press the Reset switch on the Router Unit. Hold the switch for at least a second, and then release it. The Wireless Broadband Router restarts automatically, and the settings of the unit whose Reset switch is pressed revert to their factory defaults. Repeat the setup procedure.

#### Wireless Unit



#### Router Unit



### Note

When resetting the Access Point, be careful not to press the Quick Setup switch by mistake.

### Case 2 The power cord is plugged to the AC outlet, but the indicators do not light

#### ① Is the AC adapter power switch on?

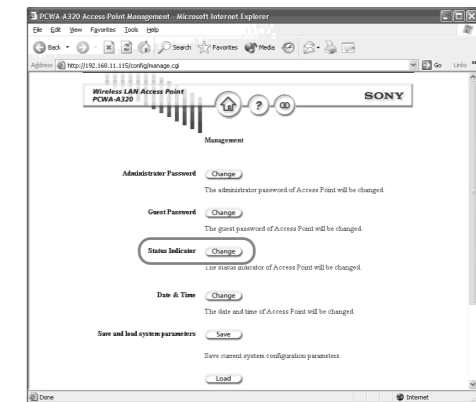
### Hint

When the AC adapter power switch is on, the LED on the adapter is lit.

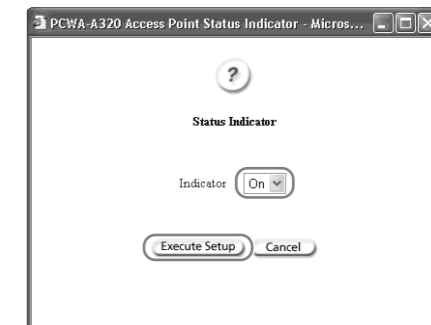
#### ② Is the "Status Indicator" setting of the Access Point set to Off?

Open the Setup Page of the Access Point, go to the Access Point "Management" page, and set "Status Indicator" to On.

1 Click "Status Indicator" and "Change".



2 Select "On" from the list and click "Execute Setup".



3 When the completion message appears, click "Close".

### Case 3 After pressing the Quick Setup switch, the Status indicator starts flashing red

If the Quick Setup switch is held down for more than one second, the Status indicator starts to flash red. 30 seconds later, the Status indicator begins flashing slowly white to indicate normal operation.

### Note

The Quick Setup switch is used in setting the separately available Wireless LAN Converter PCWA-DE30.

For information on how to use the Quick Setup switch, refer to Wireless LAN Converter PCWA-DE30 Quick Start Guide.