

PCWA-C300S

Quick Start Guide

Guide de démarrage rapide

This document explains how to install the software required to use of the Wireless LAN PC Card (IEEE 802.11g: 2.4 GHz/54 Mbps) PCWA-C300S. The document also contains answers to frequently asked questions and common problems.



Sony Corporation © 2003 Printed in Japan

Troubleshooting

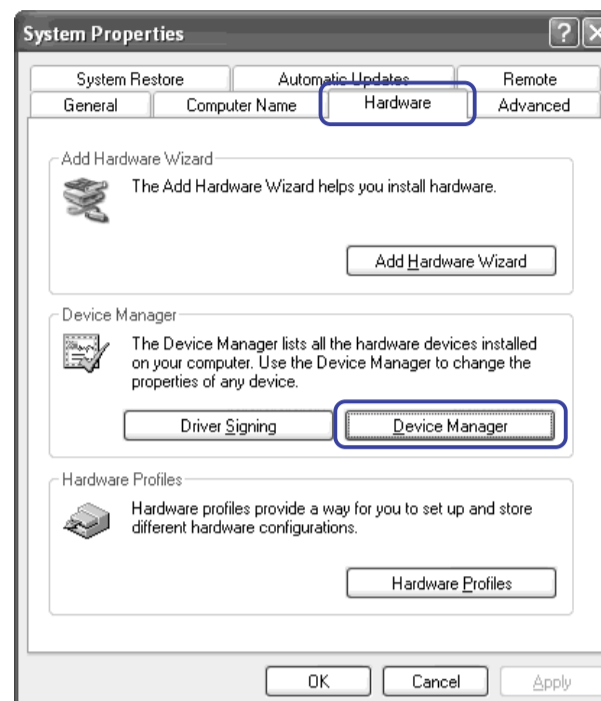
This section provides answers to frequent questions that you may have during installation of the Wireless LAN PC Card driver and Wireless Panel, and when making Access Point connection settings. Refer to this section and the Troubleshooting section of the Wireless Panel Online Help before contacting the Sony customer service.

Case 1 Cannot install the device driver

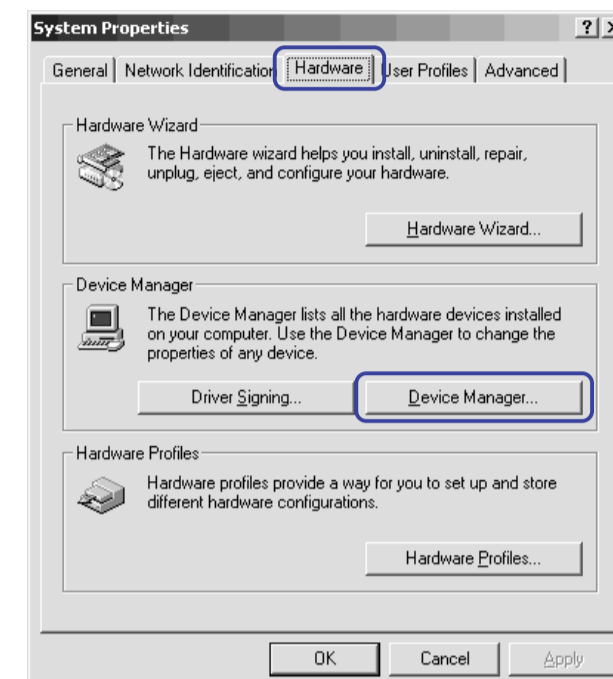
If a problem occurs during the installation of the device driver, delete it and install it again.

- 1 Right-click "My Computer" on the desktop and click "Properties" on the shortcut menu. With the Windows XP operating system, right-click "My Computer" on the "Start" menu, and then click "Properties" on the shortcut menu. The "System Properties" dialog box appears.
- 2 On the "Hardware" tab click "Device Manager". With the Windows Me operating system, simply click the "Device Manager" tab.

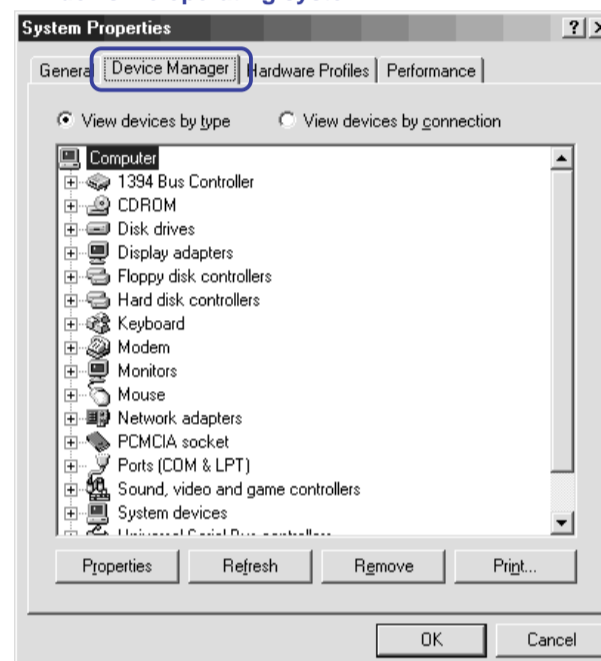
Windows XP operating system



Windows 2000 operating system



Windows Me operating system



Installation and connection settings

To use the Wireless LAN PC Card (IEEE 802.11g: 2.4 GHz/54 Mbps) PCWA-C300S, you must first install the Wireless LAN PC Card device driver and the Wireless Panel utility software. After installing these, you must perform wireless network connection settings.

Note

The Wireless LAN PC Card must be inserted in your computer when you install the device driver.

Step 1 Turn on the Access Point

Refer to the Access Point documentation for detailed installation and configuration procedures.

Step 2 Insert the supplied CD-ROM into the CD-ROM drive of your computer

- 1 Insert the supplied CD-ROM into the CD-ROM drive of your computer.

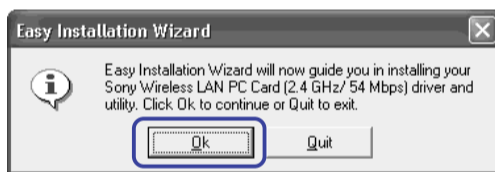
The Easy Installation Wizard starts automatically.

Hint

If the Easy Installation Wizard does not appear when you insert the supplied CD-ROM into your CD-ROM drive, double-click "Setup.exe" () on the CD-ROM. Depending on the settings of your computer, the file name may be "Setup".

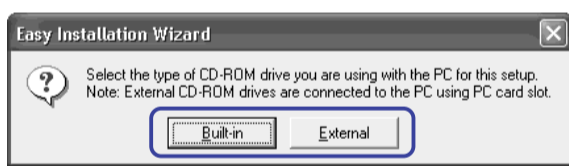


- 2 When the following message appears, click "OK".



- 3 Click the button that corresponds to your type of CD-ROM drive.

If you are using an external CD-ROM drive, follow the instructions on the screen and copy the contents of the CD-ROM to your hard disk. When the copy is complete, click "Main Menu".



The Main Menu of the Easy Installation Wizard appears.

Step 3 Install the device driver and utility software, and then make connection settings

First, click "Install Driver". Follow the instructions on the screen to install the Wireless LAN PC Card device driver and Wireless Panel, and then to make Access Point connection settings.

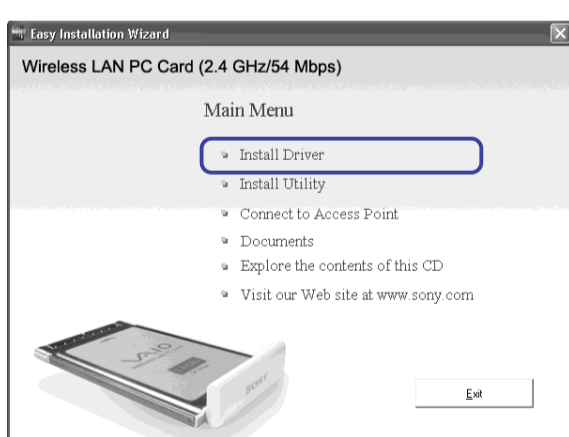
Hint

For details about how to insert the Wireless LAN PC Card and how to make Access Point connection settings, refer to the Operating Instructions.

If you have a problem...

If you encounter problems during the installation of the Wireless LAN PC Card device driver and/or Wireless Panel, or while making Access Point connection settings, refer to the following:

- Troubleshooting section of this document
- Operating Instructions
- Wireless Panel Online Help



Accessing Wireless Panel Online Help

Access from the Easy Installation Wizard

Click "Documents" on the Main Menu. In the screen that appears, click "Wireless Panel Online Help".

Access from the Wireless Panel

- 1 On the "Start" menu, point to "Wireless LAN", and then click "Wireless Panel" to start the Wireless Panel.
- 2 Right-click the Wireless Panel icon () on your Windows operating system taskbar, and then click "Help" on the shortcut menu.

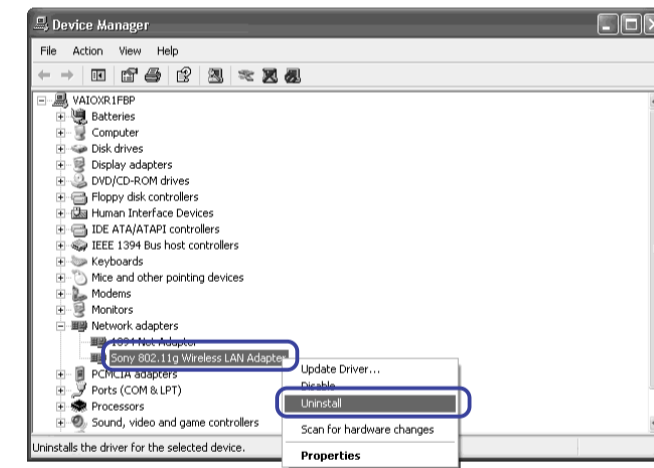
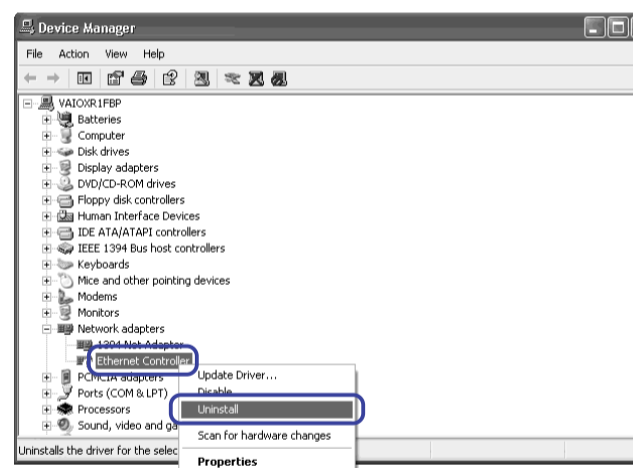
Hint

You can also access Help by clicking ? on the Wireless Panel title bar.

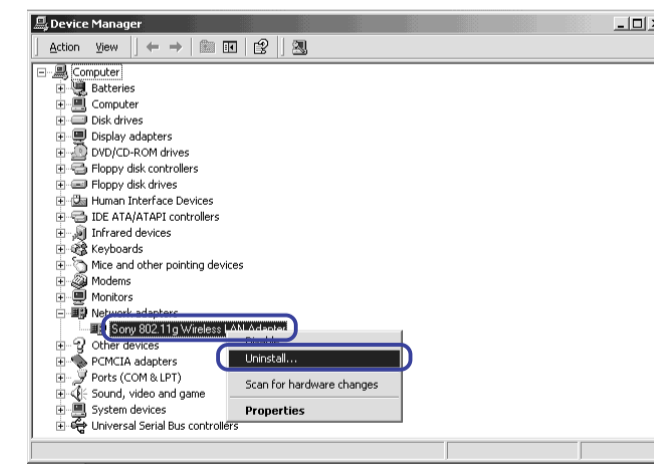
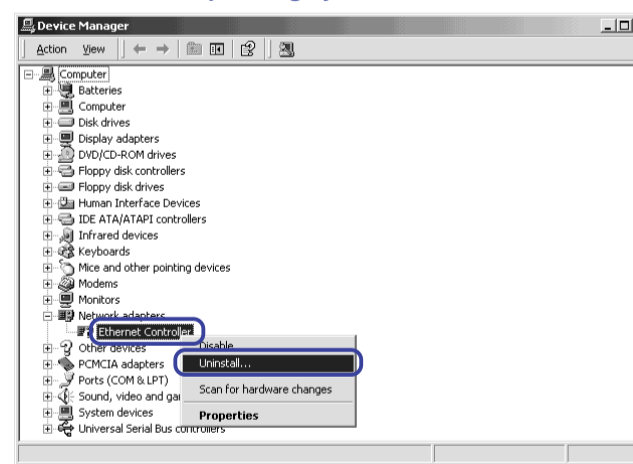
- 3 If the Wireless LAN PC Card is not inserted in your computer, insert it.

- 4 Click "Network adapters" or "Other devices". If "Sony 802.11g Wireless LAN Adapter" or "Ethernet Controller" is shown, delete it.

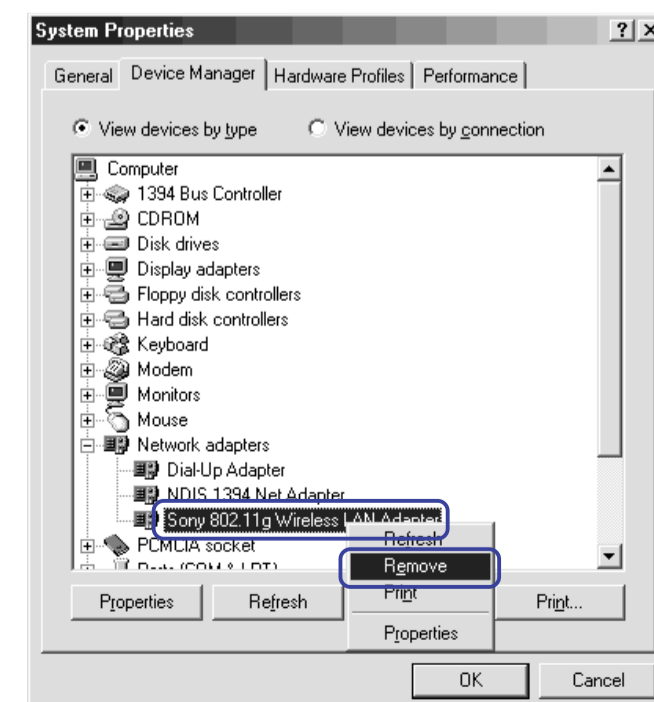
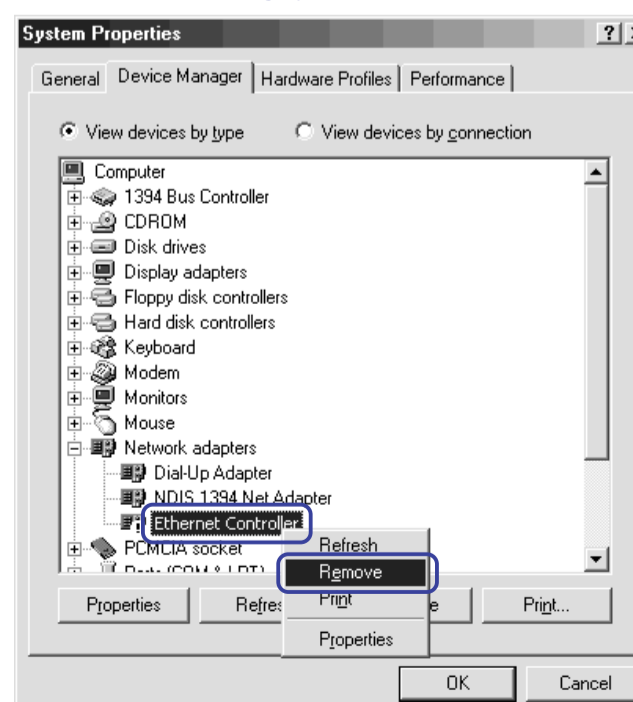
Windows XP operating system



Windows 2000 operating system



Windows Me operating system




- 5 See "Installation and connection settings" and install the driver again with the Easy Installation Wizard.

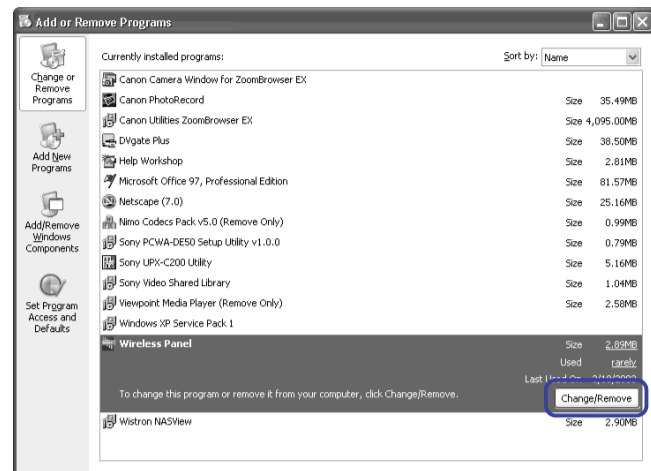
• Microsoft and Windows are registered trademarks of Microsoft Corporation in the United States of America and/or other countries.
 • Sony, VAIO, CarrierGate, and the Eco Info logo are trademarks of Sony Corporation.
 • In this manual, the Wireless LAN PC Card (IEEE 802.11g: 2.4 GHz/54 Mbps) PCWA-C300S is referred to as the Wireless LAN PC Card.
 • In this manual, Microsoft® Windows® Millennium Edition is referred to as Windows Me, Microsoft® Windows® 2000 Professional is referred to as Windows 2000, Microsoft® Windows® XP Professional and Microsoft® Windows® XP Home Edition are referred to as Windows XP.

Case 2 Cannot install Wireless Panel

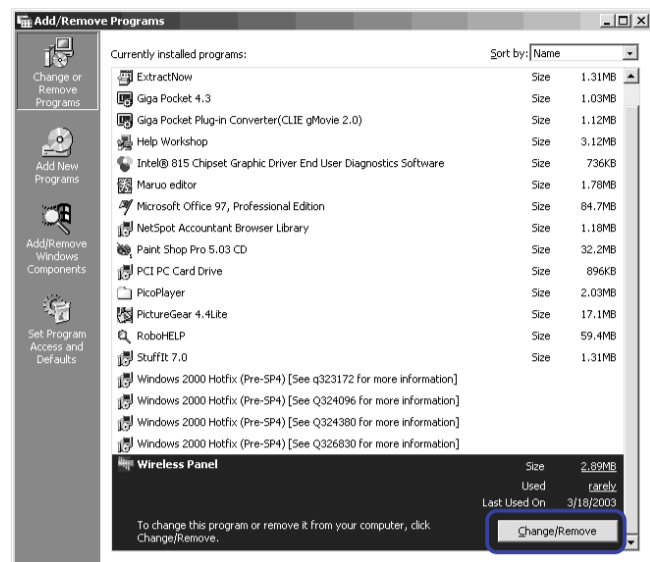
If a problem occurs during the installation of Wireless Panel, remove it and install it again.

- 1 If it appears on your Windows operating system taskbar, right-click the Wireless Panel icon () and click "Exit" on the shortcut menu.
- 2 On the "Start" menu, point to "Settings", and click "Control Panel".
With the Windows XP operating system, on the "Start" menu, click "Control Panel".
Control Panel appears.
- 3 Double-click "Add/Remove Programs".
The "Add/Remove Programs" dialog box appears.
- 4 In the "Currently installed programs" list, click "Wireless Panel", and then click "Change/Remove".
With the Windows Me operating system, click the "Add/Remove".

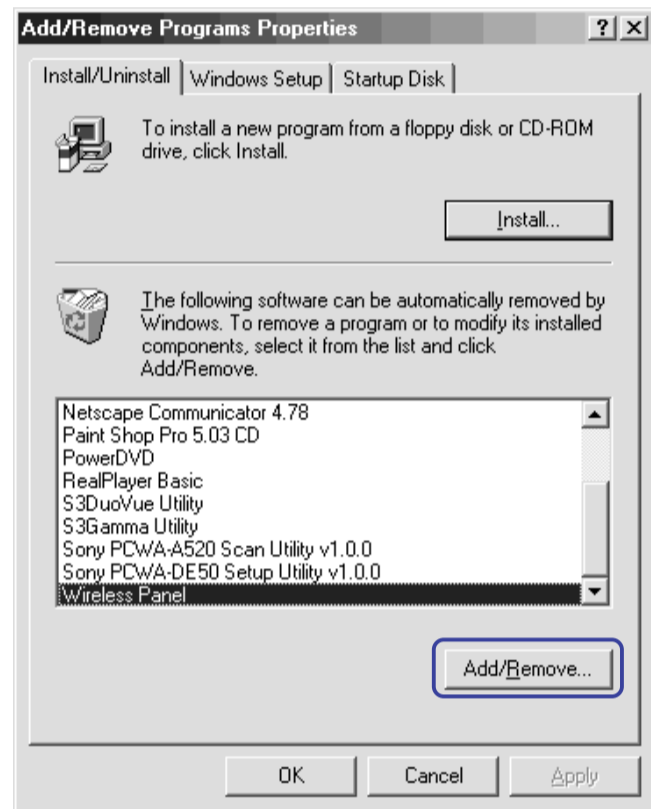
Windows XP operating system



Windows 2000 operating system

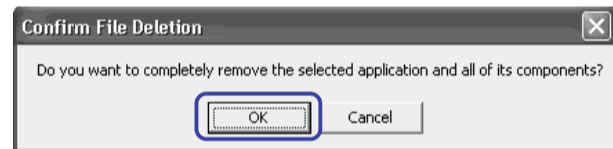


Windows Me operating system



The "Confirm File Deletion" dialog box appears.

- 5 Click "OK".



The Wireless Panel is removed, and the "Maintenance Complete" dialog box appears.

- 6 Click "Finish".



- 7 See "Installation and connection settings" and install the Wireless Panel again with the Easy Installation Wizard.

Case 3 Cannot input the encryption key

The correct encryption key (WEP key) must be input. Permissible characters and their maximum number are detailed below.

	ASCII	Hexadecimal
Permissible characters	Alphanumeric characters	0 to 9, A to F, a to f
Maximum number of characters	5 or 13 characters	10 or 26 characters

Enter the correct WEP key in the "Key" and "Confirm key" boxes.



ASCII and Hexadecimal formats are detected automatically.

Case 4 Cannot establish a connection

Verify your computer's firewall functions.

When using the Windows XP operating system

Enabling the Windows XP "Internet Connection Firewall" function may prevent you from being able to access your computer through wireless communication. (This function is inactive under the Windows XP operating system default settings.) Because of this function, you may not be able to connect to your network when you change your Access Point settings. If this happens, deactivate the "Internet Connection Firewall" function, connect to the network, and then reactivate the function. For details, refer to Windows XP Help.


When using virus scanning or network security software

Virus scanning and network security software sometimes includes a function called a "personal firewall" that is designed to prevent illegal access by outside entities. Depending on the software, the security level of this function may be initially set to a high level. If this high security level setting is left in effect, it may be impossible for an outside entity to access your computer. This can cause problems such as not being able to connect to the network when changing the Access Point's settings. In this event, lower the security level in order to permit the network connection. For details, refer to the manuals provided with your software.

Notes

- Network security is an important issue. You are urged to consider carefully how best to protect your computer.
- For questions regarding firewall functions, please contact your firewall software manufacturer.

- If you cannot connect to the Internet for example, verify the following, in order.

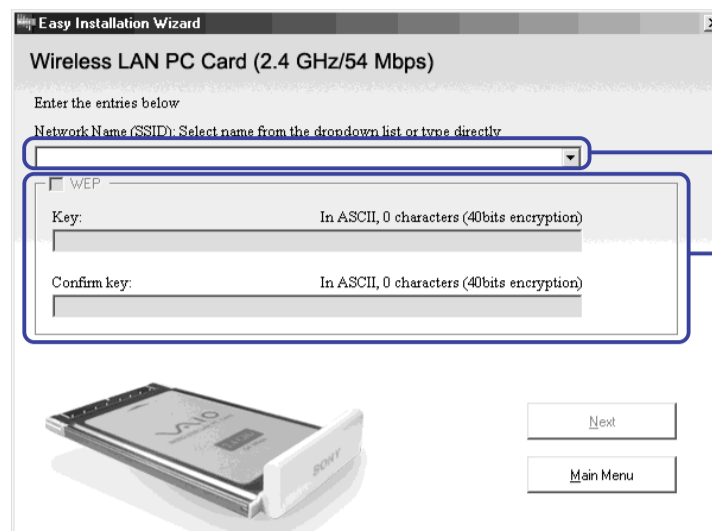
- 1 Make sure that the Wireless Panel icon () appears on the Windows taskbar.
If there is no such icon, see "Installation and connection settings" and install the Wireless Panel with the Easy Installation Wizard.
- 2 Insert the Wireless LAN PC Card in your computer.
- 3 Depending on the icon on the taskbar, perform one of the following.



The Wireless LAN PC Card device driver was not correctly installed. See Case 1 to reinstall the device driver.



Could not establish a connection to the Access Point. On the Main Menu of the Easy Installation Wizard, click "Connect to access point". In the screen that appears, enter the correct network name (SSID) and encryption key (WEP key) of the Access Point.

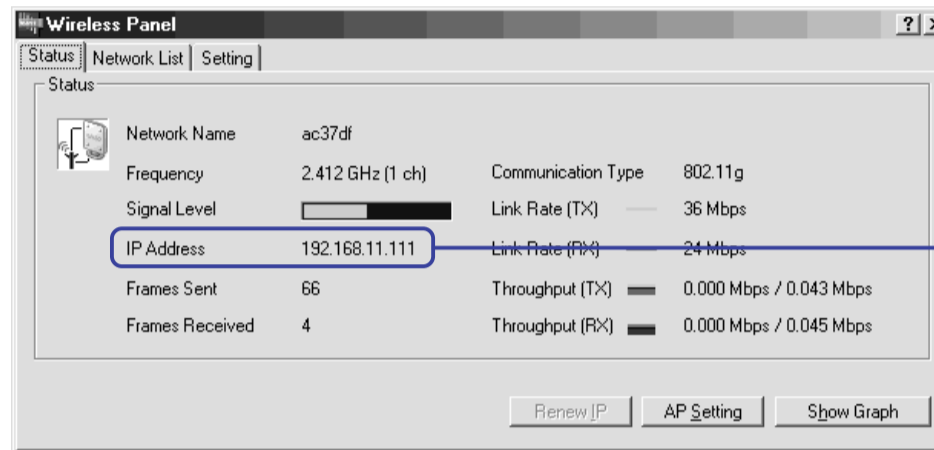


Enter the network name or select it from the list

If the Access Point encryption key (WEP key) is set, enter the same key here



Double-click  to open the Wireless Panel and verify the IP address.



Verify this setting

If the IP address is "0.0.0.0" or "169.254.---"

The Access Point encryption key (WEP key) settings may differ from the Wireless LAN PC Card WEP key settings. On the Main Menu of the Easy Installation Wizard, click "Connect to access point". In the screen that appears, enter the encryption key (WEP key) of the Access Point. If you still cannot connect to the Internet, verify the 1, 2, and 3 below in order.

If the IP address is not "0.0.0.0" or "169.254.---"

Connection to the Access Point was established. verify the 1, 2, and 3 below in order.

- 1 Is the wireless link set up to act as a network bridge? (Windows XP operating system only)

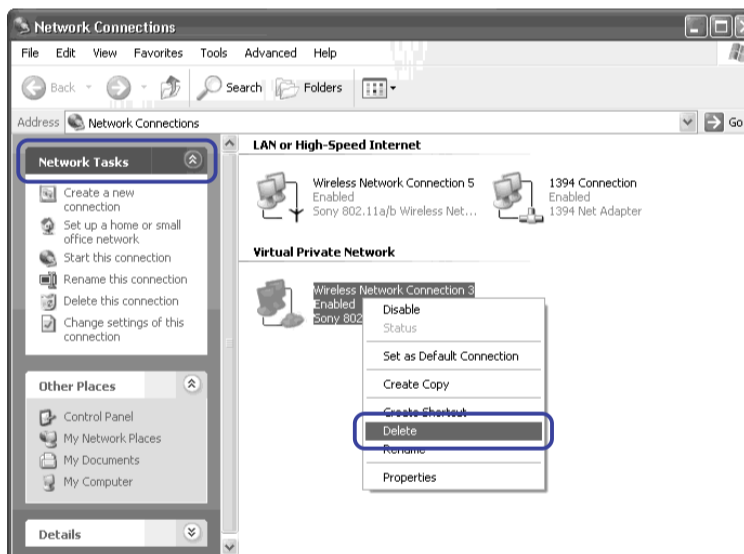
Perform the following and change settings as necessary.

- 1 On the "Start" menu, click "Control Panel", and double-click "Network Connections".

Note

If "Network Connections" is not displayed, click "Switch to Classic View" on the left of Control Panel.

- 2 Confirm that the wireless network connection in question is not acting as a network bridge.
- 3 If the wireless network connection is configured as a network bridge, right-click the corresponding icon, and click "Delete".



- 2 Verify the Access Point settings

Refer to the Access Point documentation and configure it correctly for Internet connection.

- 3 Verify your ADSL or CATV modem settings

Refer to your Internet service provider documentation to correctly configure your ADSL or CATV modem (for example) for Internet connection. For details, contact your Internet service provider's technical support.

Case 5 Cannot configure the Access Point

You must install all the necessary software supplied by your Access Point manufacturer to configure the Access Point. For details, refer to your Access Point documentation.

Case 6 You do not know how to use Wireless Panel

For details about how to use Wireless Panel, refer to its Help as follows.

Accessing Wireless Panel Online Help

Access from the Easy Installation Wizard


On the main menu of the Easy Installation Wizard, click "Documents". On the screen that opens, click "Wireless Panel Online Help".

Access from Wireless Panel

- 1 On the "Start" menu, point to "Wireless LAN", and then click "Wireless Panel" to start the Wireless Panel.

- 2 Right-click the Wireless Panel icon () on your Windows operating system taskbar, and then click "Help" on the shortcut menu.

Hint

You can also access Help by clicking  on the Wireless Panel title bar.