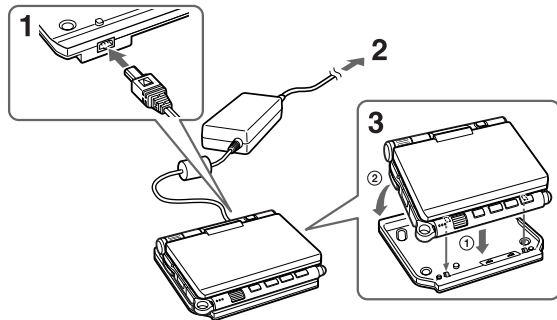


For detailed instructions, see the manuals included with your CLIÉ handheld.

▶ Charging your CLIÉ handheld before use

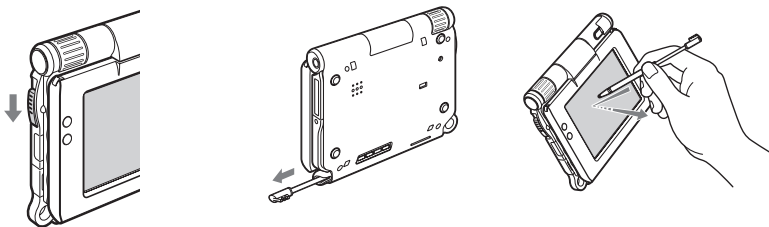


Before using your CLIÉ handheld for the first time, be sure to fully charge the battery.

(▶ See page 8-9 in the "Read This First" for detailed instructions.)

▶ Setting up your CLIÉ handheld for the first time

- 1** Slide down and release the POWER/HOLD switch.
- 2** Take out the stylus.
- 3** Press lightly on the screen (Tap).



The first time you turn on your CLIÉ handheld, you need to make some initial settings. After 3 steps above, follow the on-screen instructions.

(▶ See page 9-15 in the "Read This First" for detailed instructions.)

Enjoy your CLIÉ handheld!

▶ Setting up the wireless LAN function

A: Connecting to the Internet

- ▶ See page 35-46 in the "Read This First".
- ▶ See page 79-84 in the "Handbook" (PDF)*.

B: Performing the HotSync® operation via a wireless LAN

- ▶ See page 116-118 in the "Handbook" (PDF)*.

▶ Synchronizing with Microsoft Outlook

To synchronize data on your CLIÉ handheld with **Microsoft Outlook** or **Lotus Organizer** on your computer, use **Intellisync Lite** (for PC).

- ▶ See **Intellisync Lite** in the "CLIÉ Application Manual" (HTML)*.

▶ Listening to MP3 files

To transfer music files in MP3 format, use **Data Import** and **Data Export** (for PC). To play music files in MP3 format, use **Audio Player**.

- ▶ See **Audio Player**, **Data Import**, and **Data Export** in the "CLIÉ Application Manual" (HTML)*.

* You can find the manual on the Installation CD-ROM.

For the latest information on support and accessories, check our official Sony CLIÉ website:

<http://www.sony.com/cliesupport/>