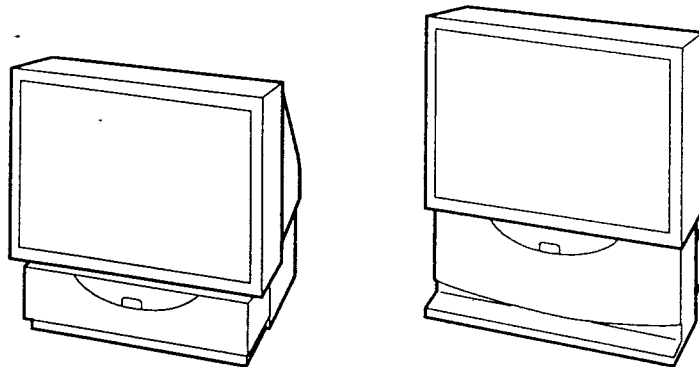


SERVICE MANUAL

<u>MODEL</u>	<u>COMMANDER</u>	<u>DEST.</u>	<u>CHASSIS NO.</u>
SCN-41X1		US/CND	
SCN-46X1		US/CND	
SCN-53X1		US/CND	

<u>MODEL</u>	<u>COMMANDER</u>	<u>DEST.</u>	<u>CHASSIS NO.</u>

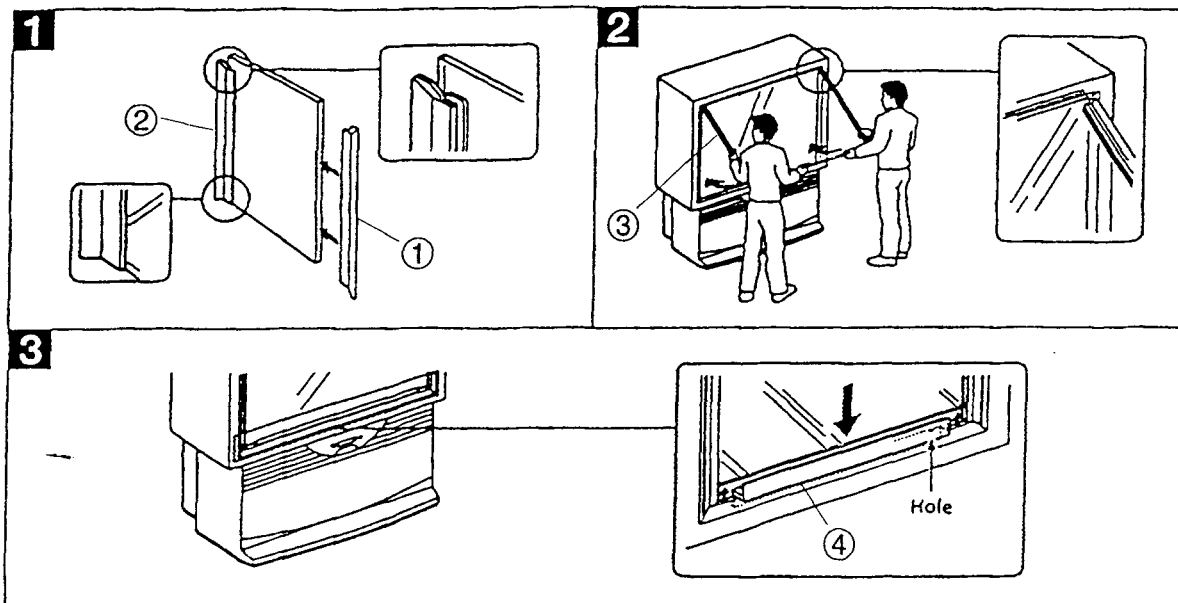
B



HIGH-CONTRAST PROTECTIVE SCREEN

SONY[®]

※ Please file according to model size.



English

Instructions

This screen is designed for use with projection TVs to protect the screen and improve picture contrast.

Installing the contrast screen

Make sure to install the contrast screen using two people. Do not attempt to install the screen by yourself.

1 Attach the shorter frame bars to both sides of the contrast screen.
Be sure to position the raised side of the bar up and the flat surface towards you.

2 Mount the contrast screen onto the projection TV.
First insert the upper edge of the contrast screen between the projection TV cabinet and screen, then rotate down into a position.

3 While lifting up on the contrast screen, insert the longer frame bar into the space at the bottom of the protection screen.
Be sure that the side with a small hole on the right is inserted into the space.

- Items marked " * " are not stocked since they are seldom required for routine service. Some delay should be anticipated when ordering these items.

REF. NO.	PART NO.	DESCRIPTION	REMARK
1	* X-4032-857-11	REINFORCEMENT (R) ASSY (SCN-41X1)	
1	* X-4032-856-11	REINFORCEMENT (R) ASSY (SCN-46X1)	
1	* X-4032-855-11	REINFORCEMENT (R) ASSY (SCN-53X1)	
2	* X-4032-858-11	REINFORCEMENT (L) ASSY (SCN-41X1)	
2	* X-4032-860-11	REINFORCEMENT (L) ASSY (SCN-46X1)	
2	* X-4032-859-11	REINFORCEMENT (L) ASSY (SCN-53X1)	
3	* 4-047-836-11	SCREEN (41), CONTRAST	
3	* 4-048-707-11	SCREEN (46), CONTRAST	
3	* 4-048-706-11	SCREEN (53), CONTRAST	
4	* 4-048-542-01	HOLDER (SCN-41X1)	
4	* 4-048-542-11	HOLDER (SCN-46X1)	
4	* 4-048-542-21	HOLDER (SCN-53X1)	

© 1995 by Sony Corporation Printed in U. S. A

Handwritten notes: 1/6 and 1/2 with a checkmark.

Sony Corporation
Consumer A&V Products Company
TV & Display Products Div.